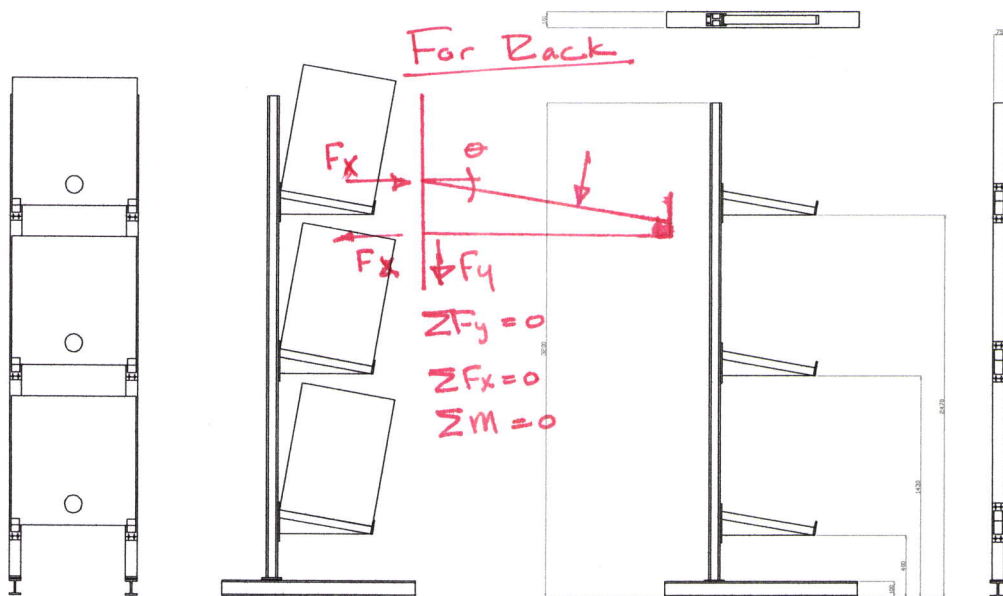


This a complex F.B.D.

review:

① http://www.roymech.co.uk/Useful_Tables/Mechanics/Statics.html

② <http://pages.uoregon.edu/struct/courseware/461/461-lectures/461-lecture14.html>



For Back

F_x = Tension in Bolts

F_y = Shear in Bolts

FRONT VIEW

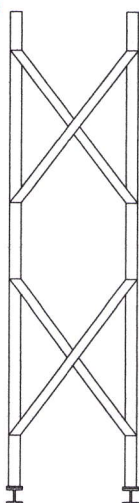
SIDE VIEW

• Maximum Moment will determine member size

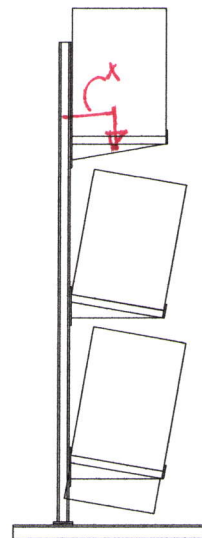
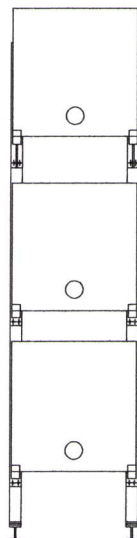
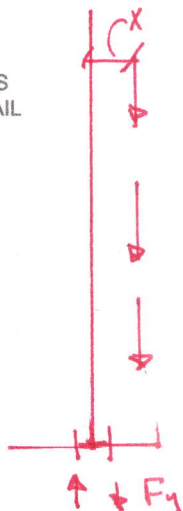
Also need to consider: Lateral Loads:

Seismic?
wind?

Safety?



REAR CROSS BRACE DETAIL



TOP BOX STORAGE ONLY

View Column as

Cantilevered I beam - max moment will determine size

CANTILEVERED 'I' BEAM FRAME

Reactions will determine bolts size & Base plate thickness.