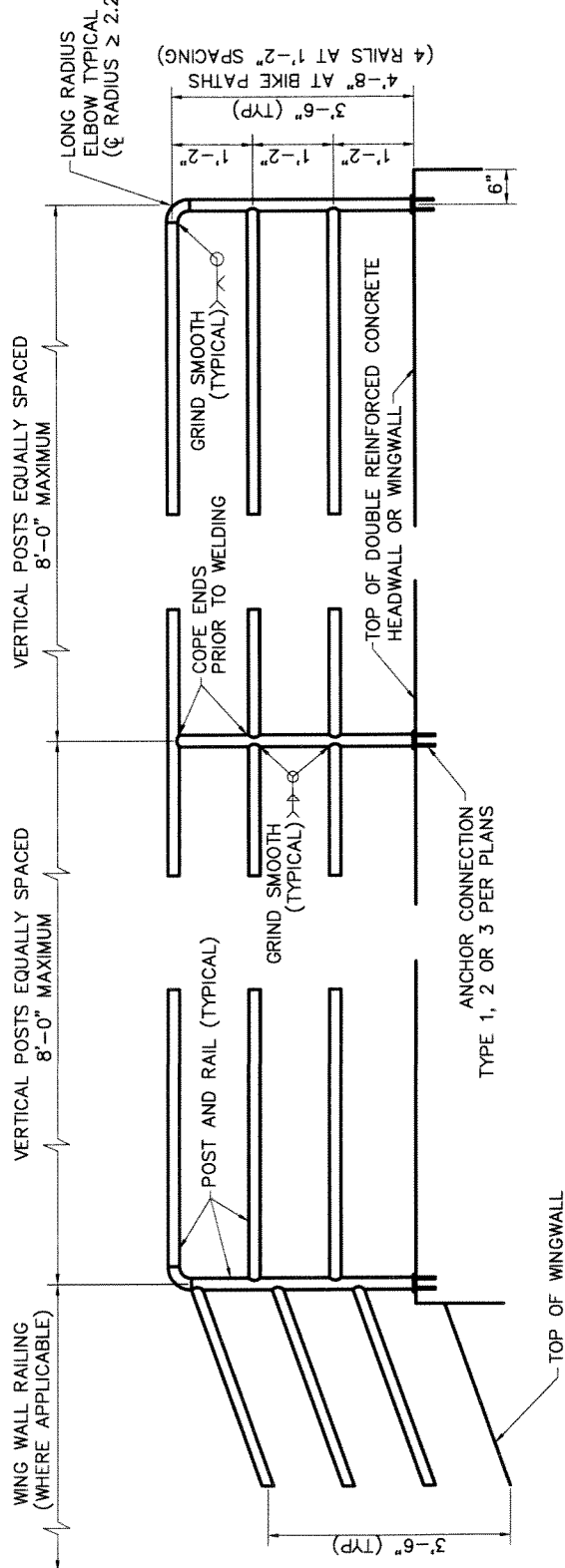
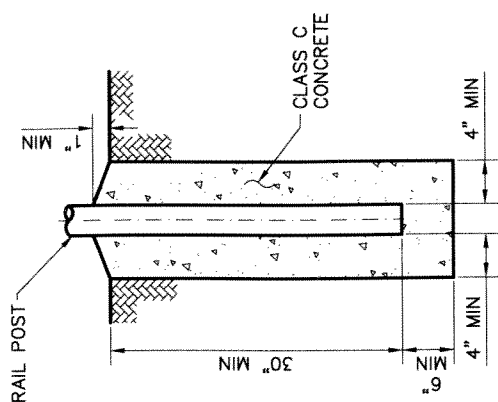


NOTES:

1. POSTS AND RAILS SHALL BE 1.5" SCHEDULE 40 HOT-DIPPED GALVANIZED STEEL PIPE ASTM A 53, GRADE A (2.72 #/LF, 1.9" O.D.). GALVANIZING SHALL BE IN ACCORDANCE WITH SECTION 771.
2. PAINT RAIL PER SPECIFICATIONS WHEN REQUIRED BY PLANS. SHOP PRIME WITH RUST INHIBITING PRIMER (FIELD REPAIR PRIMER AS NEEDED). COLOR PER PLANS.
3. VERTICAL POSTS TO BE EVENLY SPACED.
4. REMOVE ALL SHARP EDGES.
5. INSTALL SAFETY RAIL AS REQUIRED BY PLANS OR SPECIFICATIONS.
6. THE EMBEDMENT FOR ANCHOR TYPES 1, 2 AND 3 SHALL BE LOCATED INSIDE THE WALL REINFORCEMENT CAGE.

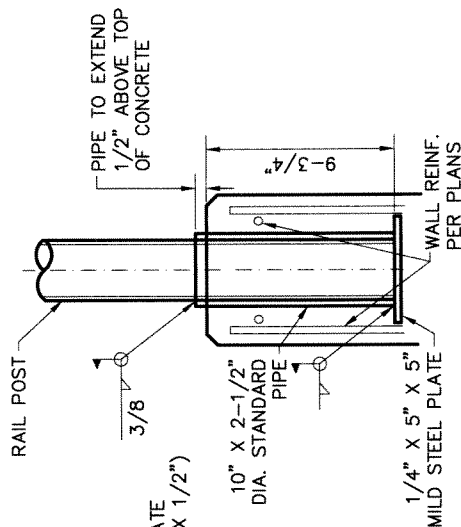


ELEVATION



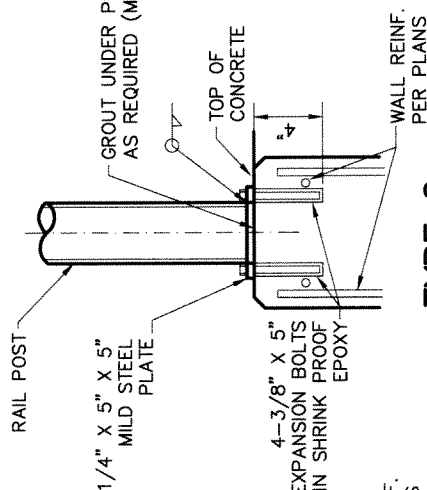
TYPE 4

GROUND INSTALLATION DETAIL



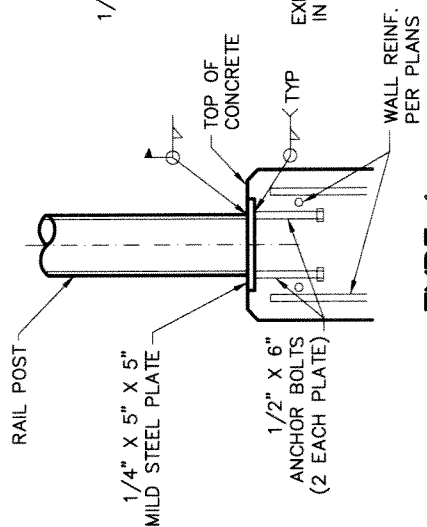
TYPE 3

PIPE SLEEVE DETAIL



TYPE 2

EXPANSION BOLT DETAIL



TYPE 1

ANCHOR PLATE DETAIL

NOTE: SEE PLANS FOR ANCHORAGE DETAILS FOR ATTACHMENT TO SINGULARLY REINFORCED AND NON-REINFORCED WALLS.