

$f'_c = 30\text{MPa}$   
 $f_t = 2.5\text{MPa}$

Dead = Self only  
Live = 4.8kPa (100psf)

## Non-Linear Analysis

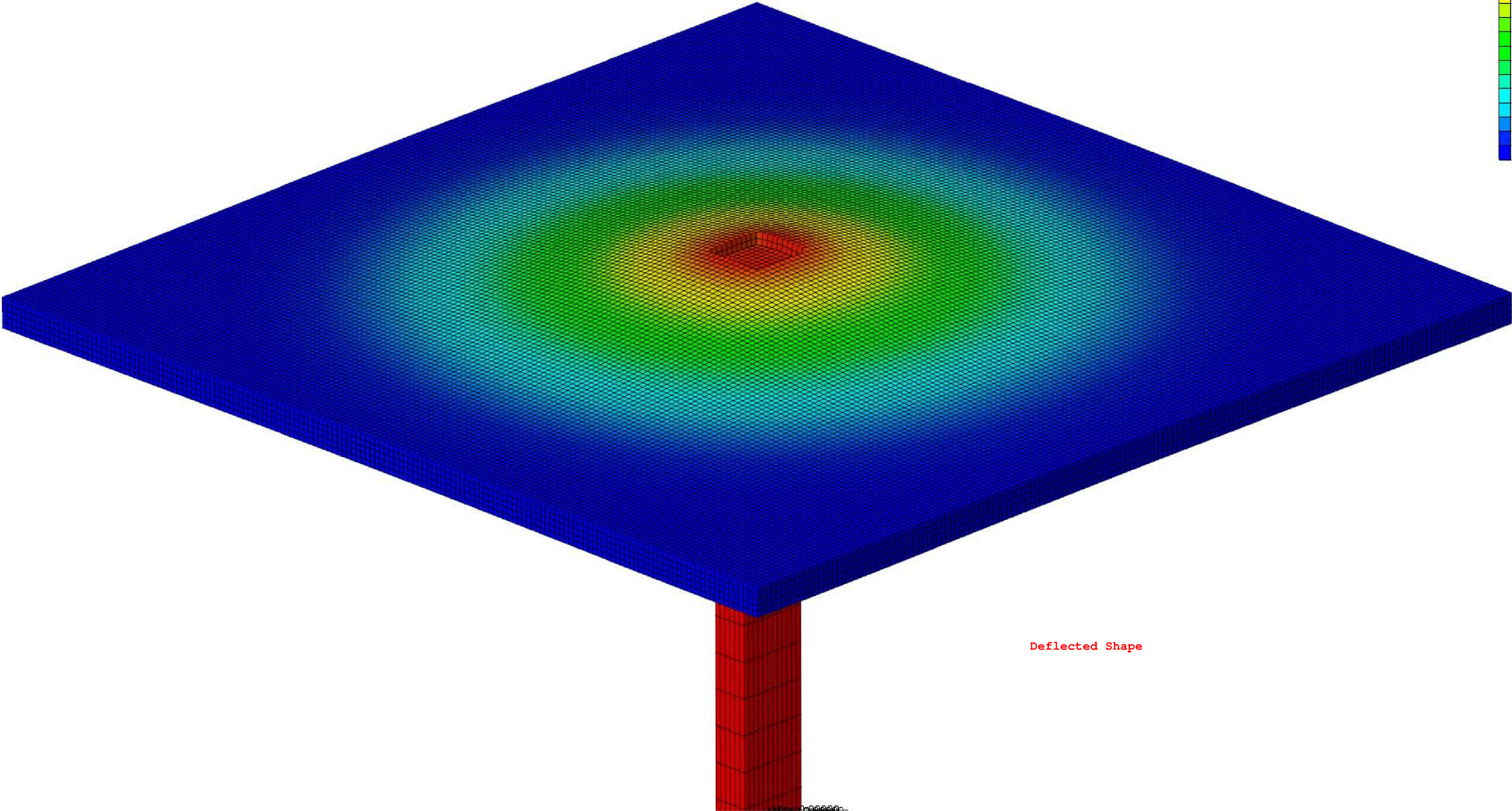
### Crack model: Ideal

Load steps include service loads only



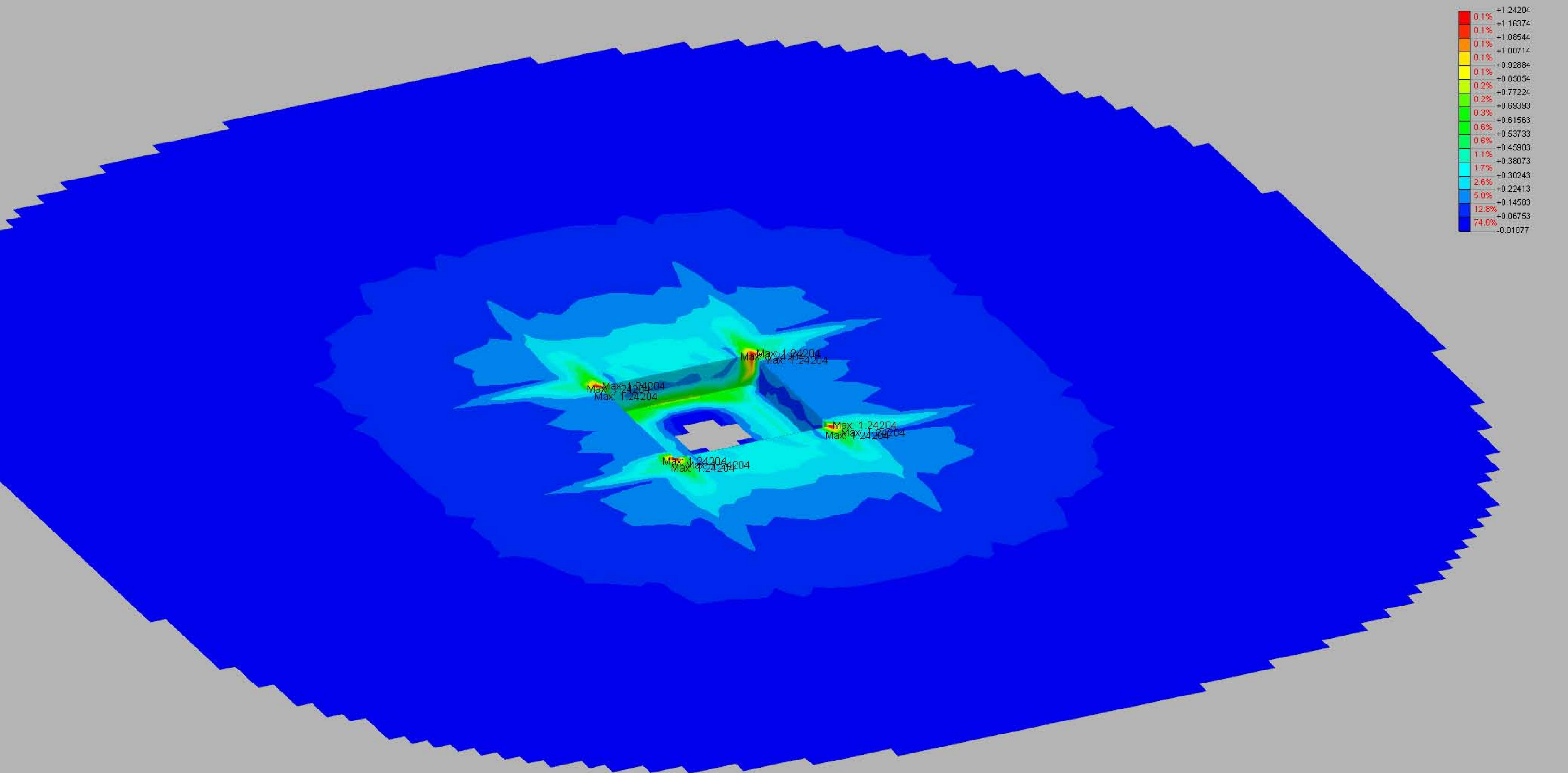


|       |          |
|-------|----------|
| 0.5%  | +0.00000 |
| 1.4%  | -0.52182 |
| 1.0%  | -1.04364 |
| 1.4%  | -1.56546 |
| 1.6%  | -2.08728 |
| 2.1%  | -2.60910 |
| 2.5%  | -3.13092 |
| 3.0%  | -3.65274 |
| 3.6%  | -4.17456 |
| 4.2%  | -4.69638 |
| 5.0%  | -5.21820 |
| 6.1%  | -5.74002 |
| 7.6%  | -6.26184 |
| 10.1% | -6.78366 |
| 15.6% | -7.30548 |
| 34.2% | -7.82730 |
|       | -8.34912 |



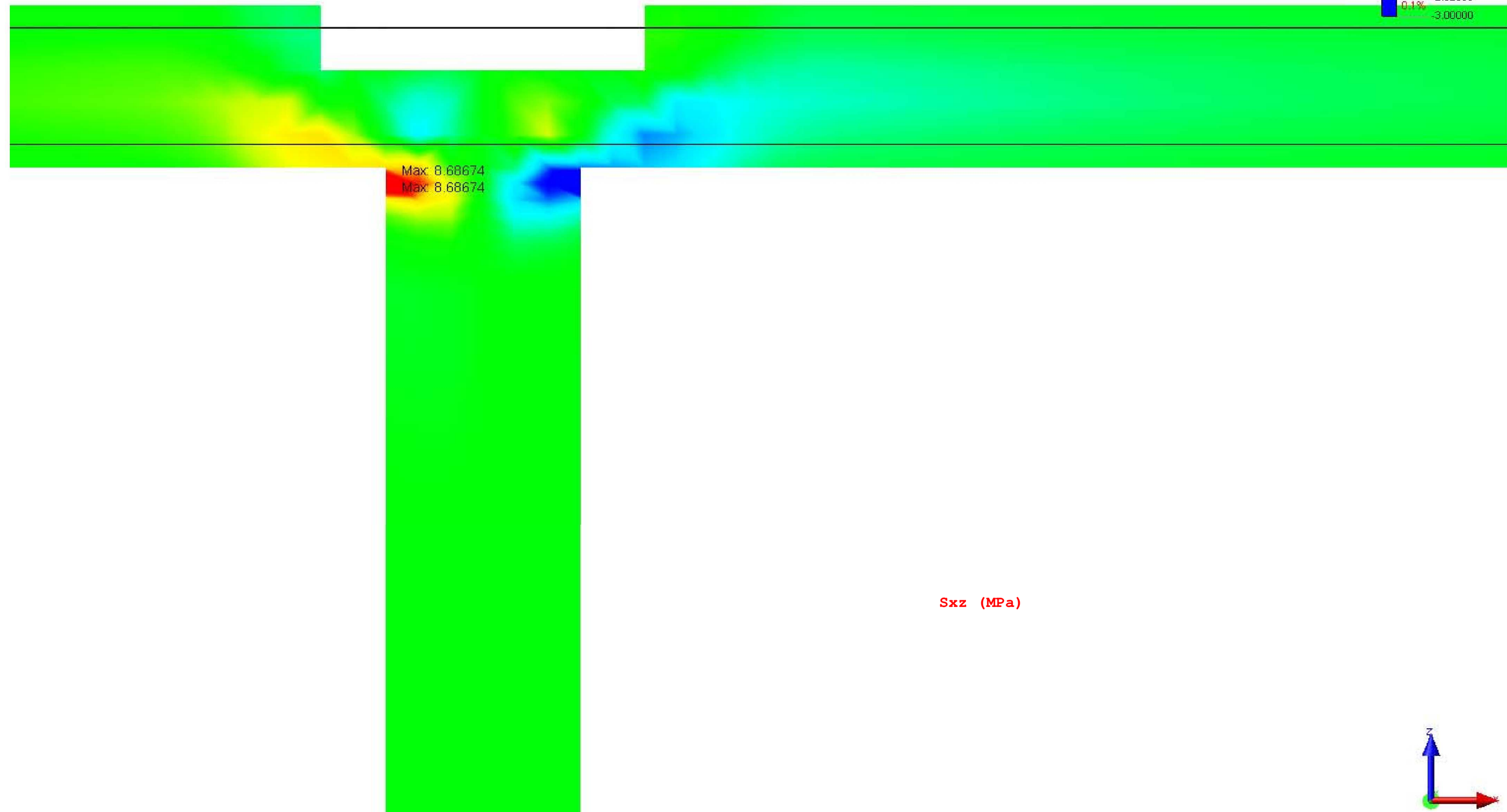
Deflected Shape

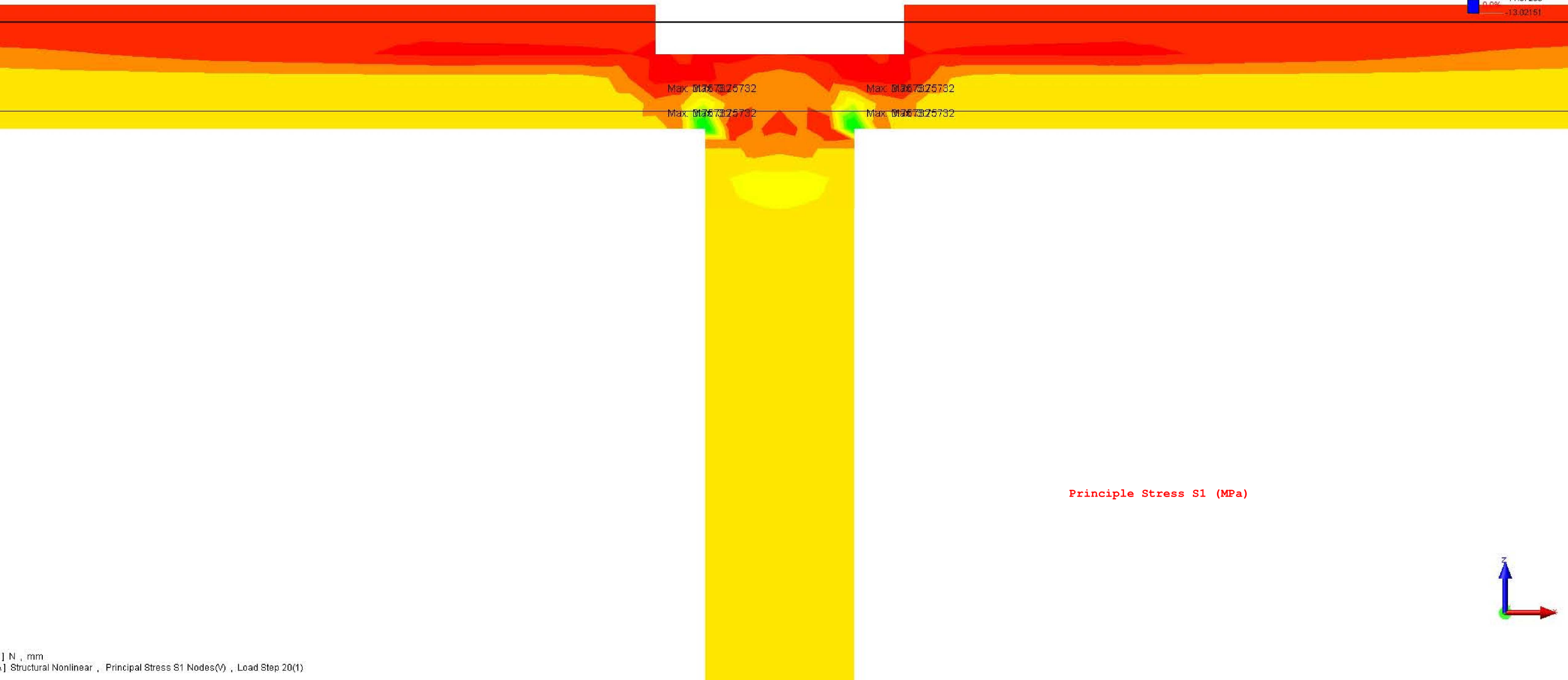




|       |          |
|-------|----------|
| 0.1%  | +1.24204 |
| 0.1%  | +1.16374 |
| 0.1%  | +1.08544 |
| 0.1%  | +1.00714 |
| 0.1%  | +0.92884 |
| 0.1%  | +0.85054 |
| 0.2%  | +0.77224 |
| 0.2%  | +0.69393 |
| 0.3%  | +0.61563 |
| 0.6%  | +0.53733 |
| 0.6%  | +0.45903 |
| 1.1%  | +0.38073 |
| 1.7%  | +0.30243 |
| 2.6%  | +0.22413 |
| 5.0%  | +0.14583 |
| 12.8% | +0.06753 |
| 74.6% | -0.01077 |

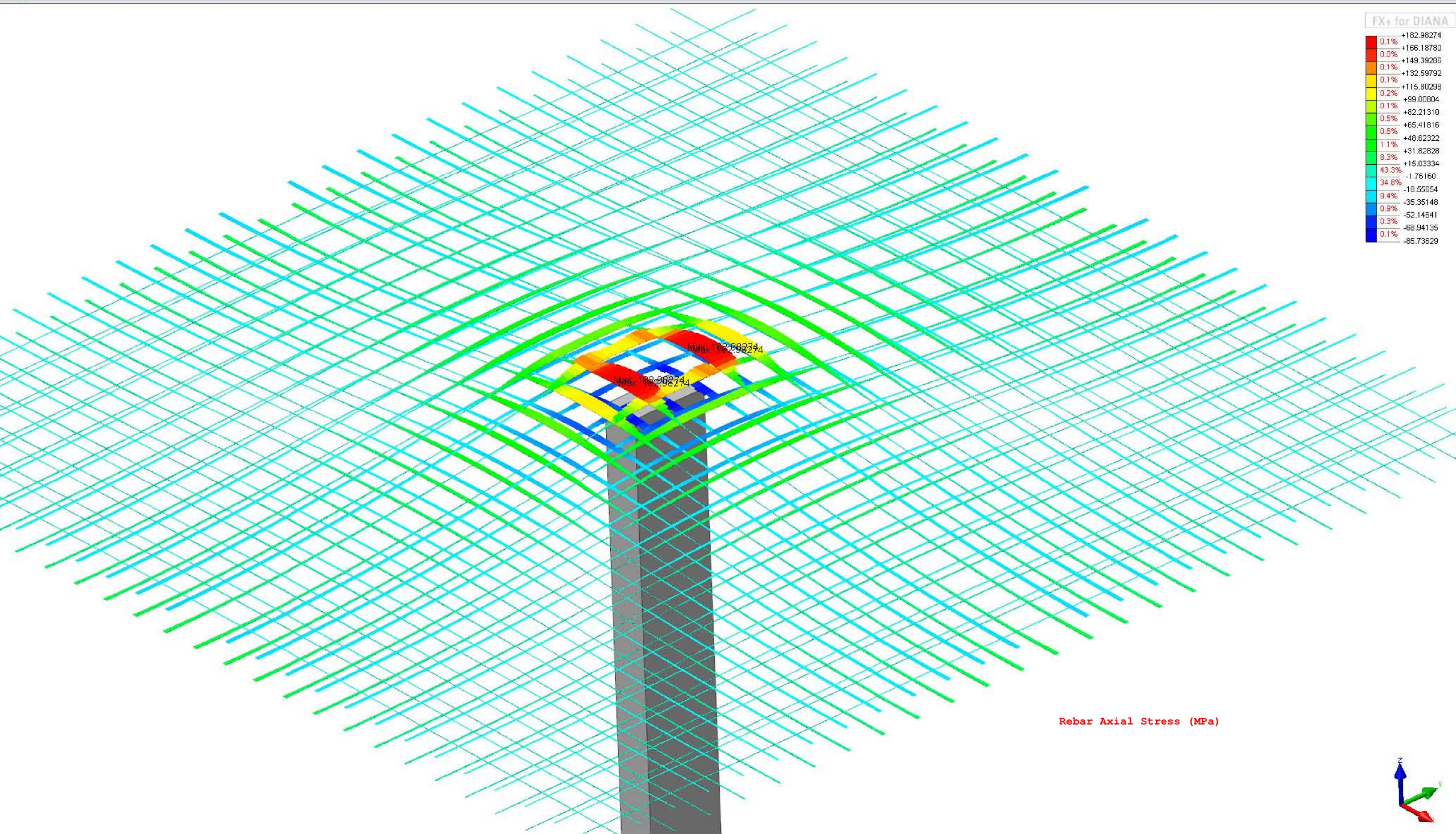
FX+ for DIANA







|       |            |
|-------|------------|
| 0.1%  | +182.98274 |
| 0.0%  | +166.18780 |
| 0.1%  | +149.39266 |
| 0.1%  | +132.59792 |
| 0.1%  | +115.80298 |
| 0.2%  | +89.00804  |
| 0.1%  | +82.21310  |
| 0.5%  | +65.41816  |
| 0.6%  | +48.62322  |
| 1.1%  | +31.82828  |
| 43.3% | +15.03334  |
| 34.8% | -1.76160   |
| 9.4%  | -18.55654  |
| 0.9%  | -35.35148  |
| 0.9%  | -52.14641  |
| 0.3%  | -68.94135  |
| 0.1%  | -85.73629  |



Max: 182.98274  
Max: 182.98274

Rebar Axial Stress (MPa)

