

250mm Slab
restrained about xx/yy

300x600 Col

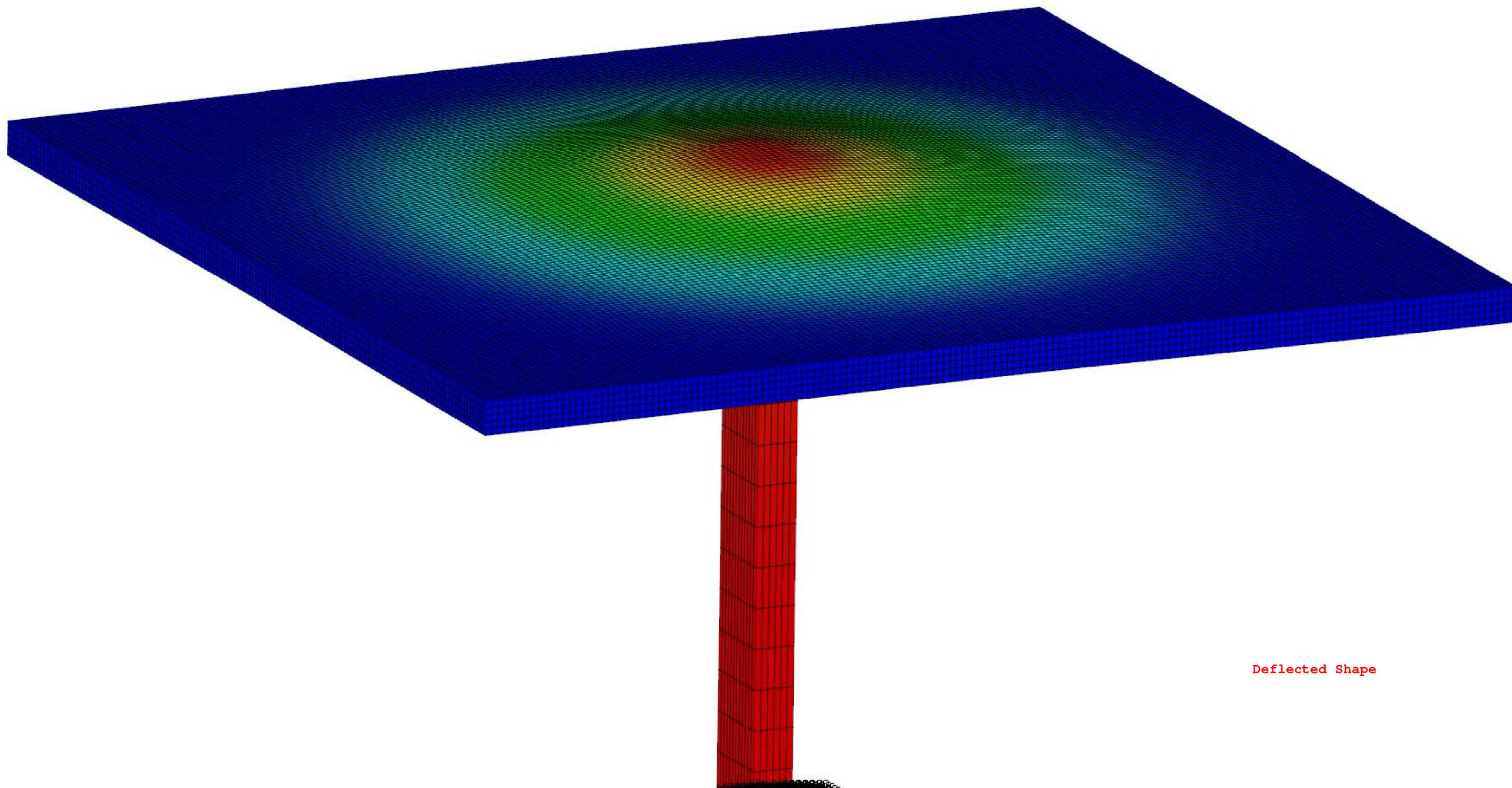
$f'_c = 30\text{MPa}$
 $f_t = 2.5\text{MPa}$

Dead = Self only
Live = 4.8kPa (100psf)

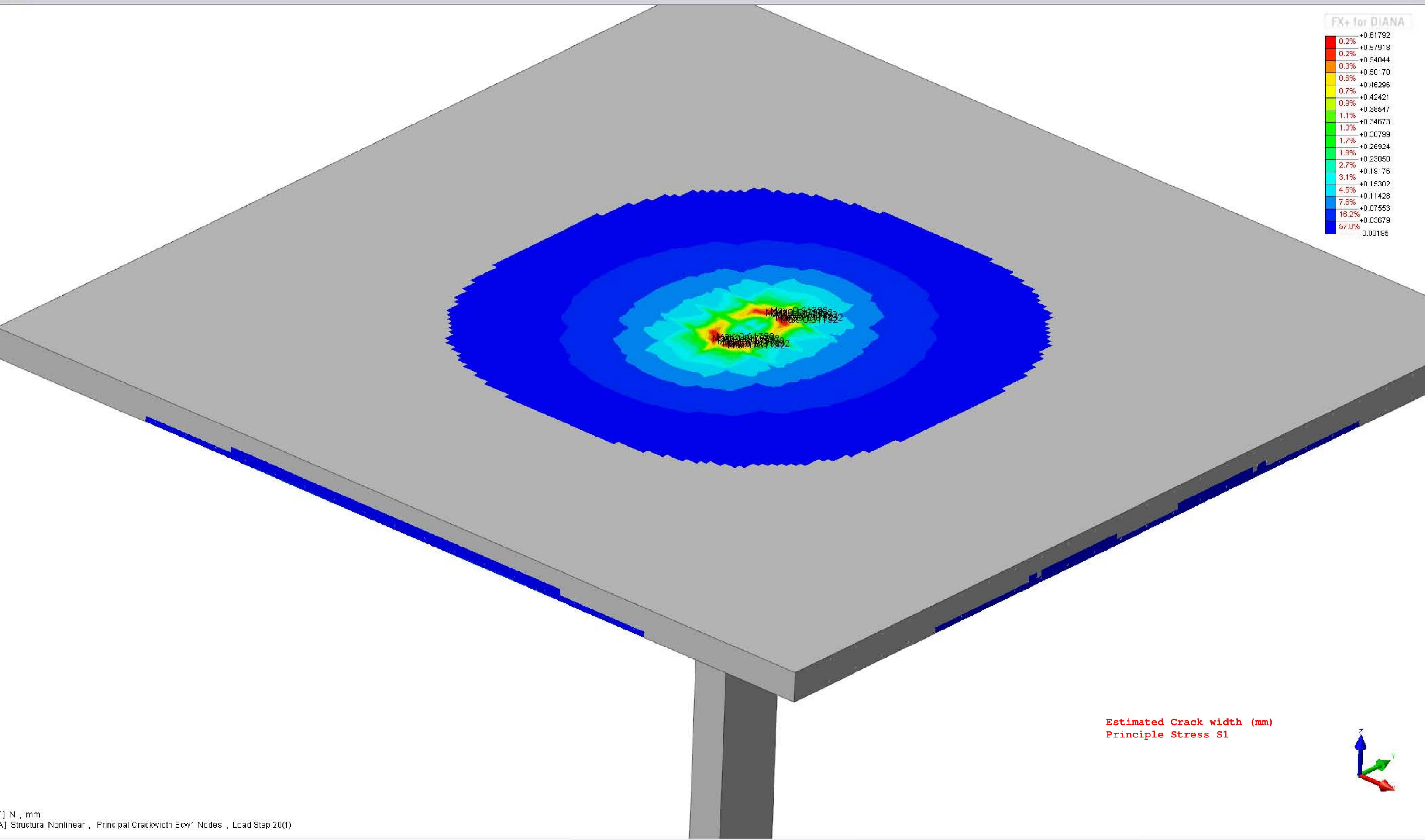
Non-Linear Analysis
Crack model: Ideal

Load steps include service loads only

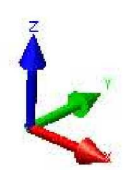
	+0.00000
0.5%	-0.49075
1.6%	-0.98151
1.1%	-1.47226
1.4%	-1.96302
1.9%	-2.45377
2.2%	-2.94452
2.6%	-3.43528
3.1%	-3.92603
3.6%	-4.41679
4.3%	-4.90754
5.0%	-5.39830
6.1%	-5.88905
7.6%	-6.37980
10.0%	-6.87056
15.5%	-7.36131
33.4%	-7.85207

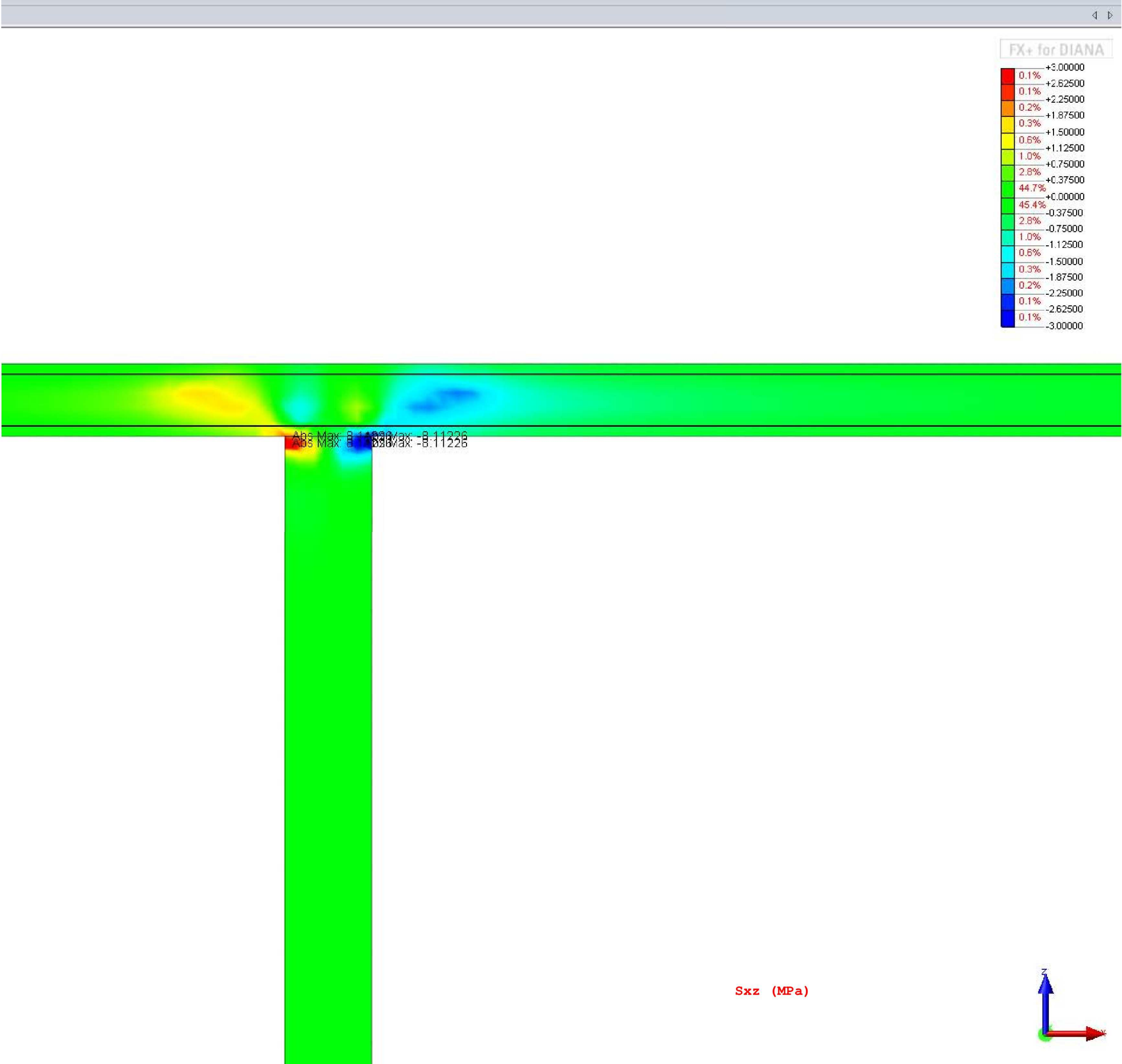


Deflected Shape



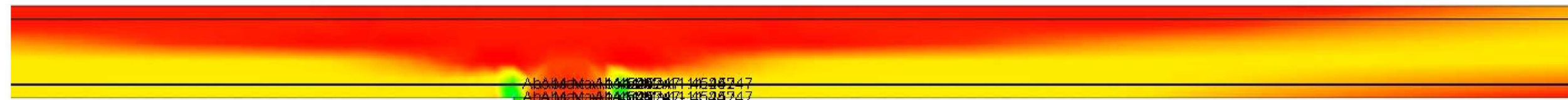
FX+ for DIANA	
0.2%	+0.61792
0.2%	+0.57918
0.3%	+0.54044
0.6%	+0.50170
0.7%	+0.46296
0.9%	+0.42421
1.1%	+0.38547
1.3%	+0.34673
1.7%	+0.30799
1.9%	+0.26924
2.7%	+0.23050
3.1%	+0.19176
4.5%	+0.15302
7.6%	+0.11428
16.2%	+0.07553
57.0%	+0.03679
	-0.00195





FX+ for DIANA

2.7%	+3.63845
19.1%	+2.69527
28.6%	+1.75209
48.7%	+0.80890
0.4%	-0.13428
0.1%	-1.07746
0.1%	-2.02065
0.1%	-2.96383
0.1%	-3.90701
0.1%	-4.85019
0.1%	-5.79338
0.0%	-6.73656
0.0%	-7.67974
0.0%	-8.62293
0.0%	-9.56611
0.0%	-10.50929
0.0%	-11.45247



Principle Stress S1 (MPa)

