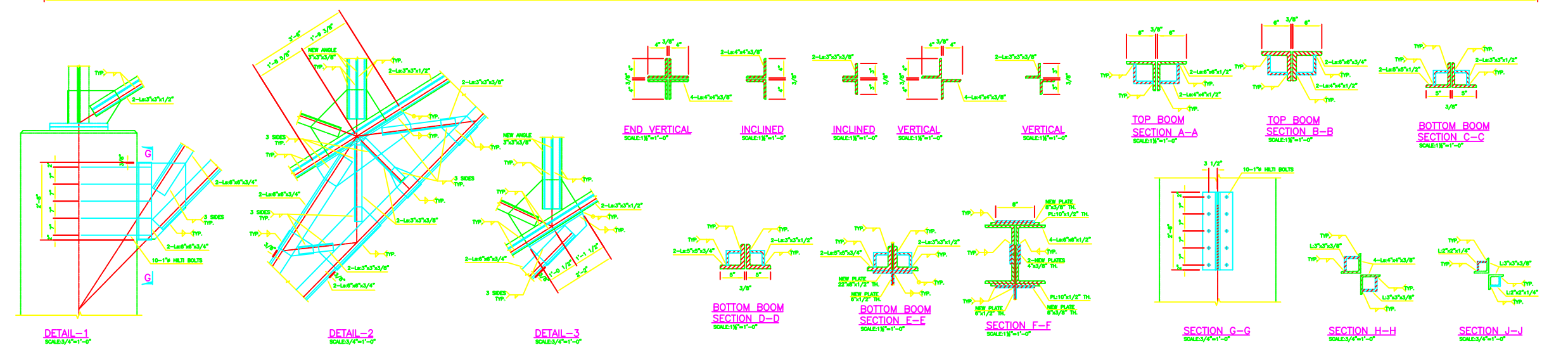


# GENERAL NOTES:

- 1-ALL MATERIAL TO BE A-36 WITH MIN. YIELD STRENGTH OF 36000 P.S.I. AS PER AISC CODE OR EQUIVALENT.
- 2- ALL FABRICATION AND ERECTION TO BE AS PER AISC SPECIFICATION OR EQUIVALENT. USE E 70 XX ELECTRODES.
- 3-ALL FILLET WELDS SHALL BE 5/16" THICK EXCEPT WHERE WRITTEN OTHERWISE ALL BUTT WELDS SHALL BE FULL STRENGTH.
- 4-ALL NEW GUSSET PLATE TO BE 3/8" THICK.



DETAIL-1  
SCALE: 3/4"=1'-0"

DETAIL-2  
SCALE: 3/4"=1'-0"

DETAIL-3  
SCALE: 3/4"=1'-0"

END VERTICAL  
SCALE: 1/8"=1'-0"

INCLINED  
SCALE: 1/8"=1'-0"

INCLINED  
SCALE: 1/8"=1'-0"

VERTICAL  
SCALE: 1/8"=1'-0"

VERTICAL  
SCALE: 1/8"=1'-0"

TOP BOOM  
SECTION A-A  
SCALE: 1/8"=1'-0"

TOP BOOM  
SECTION B-B  
SCALE: 1/8"=1'-0"

BOTTOM BOOM  
SECTION C-C  
SCALE: 1/8"=1'-0"

BOTTOM BOOM  
SECTION D-D  
SCALE: 1/8"=1'-0"

BOTTOM BOOM  
SECTION E-E  
SCALE: 1/8"=1'-0"

SECTION F-F  
SCALE: 1/8"=1'-0"

SECTION G-G  
SCALE: 3/4"=1'-0"

SECTION H-H  
SCALE: 3/4"=1'-0"

SECTION J-J  
SCALE: 3/4"=1'-0"