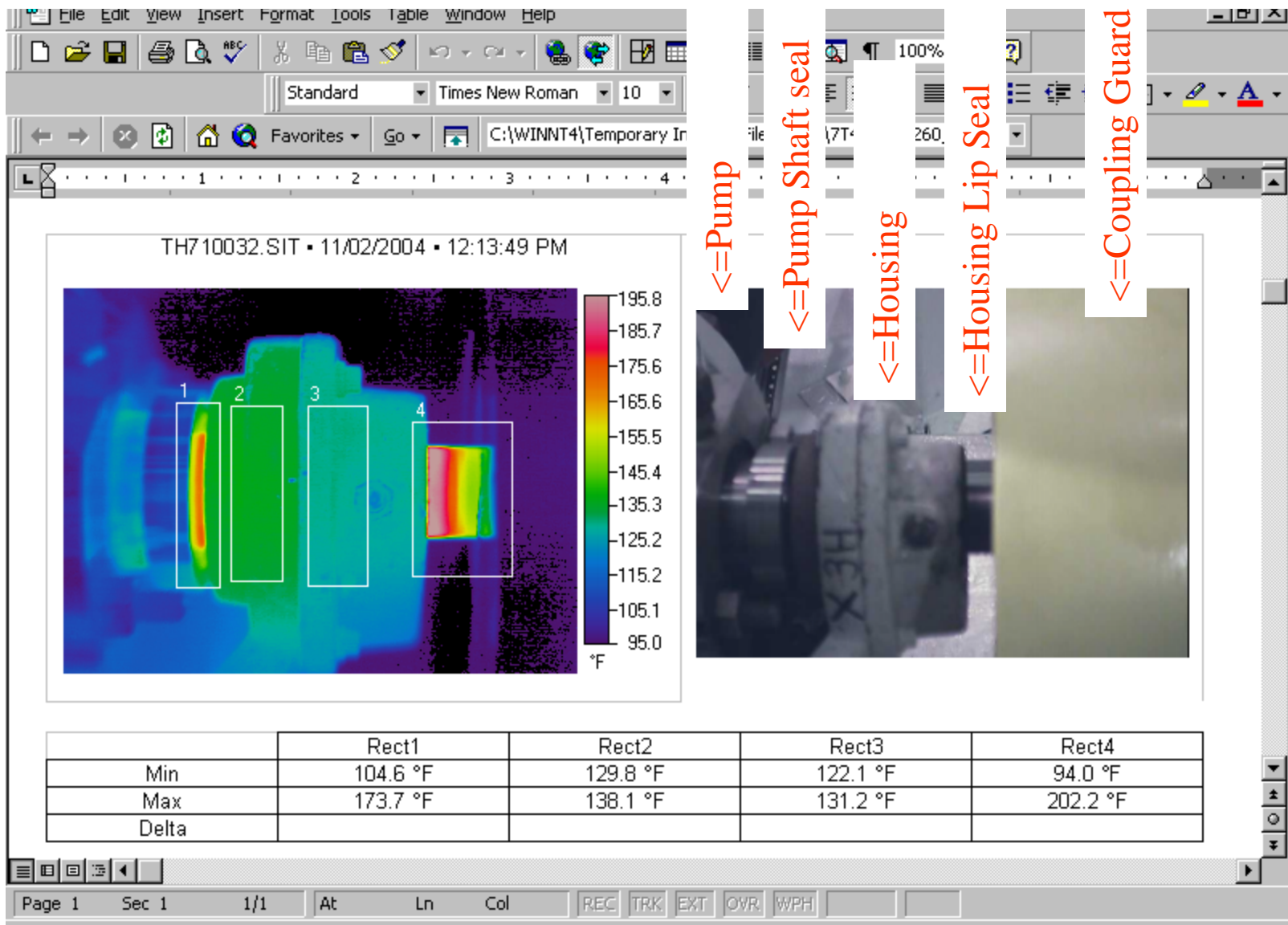


Ac 22 Pump Inboard bearing hot area – later identified housing lip seal rubbing shaft



Bearing of sister pump (ac23) – much cooler

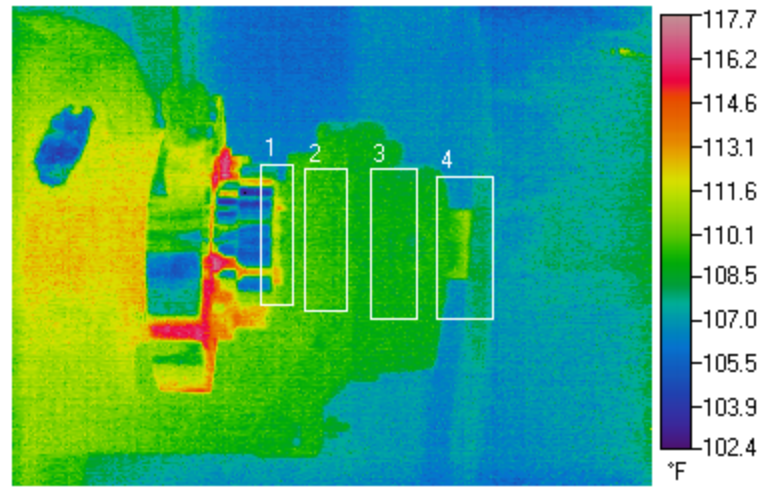
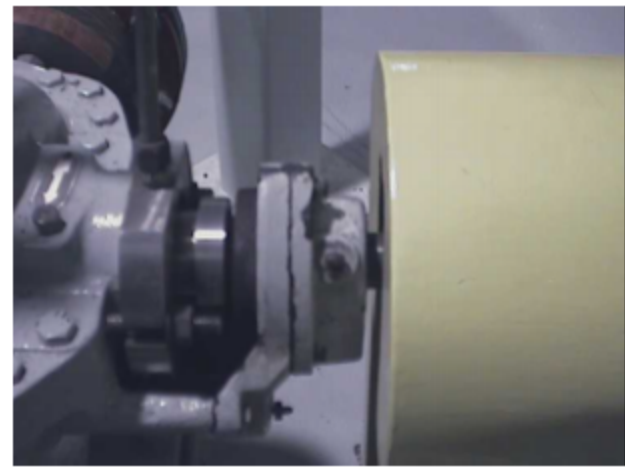
Microsoft Word - AC23_FR_TODD_MILES7T42MPA0360_10_29_04.doc

File Edit View Insert Format Tools Table Window Help

Standard Times New Roman 10 B I U

E:\briefcase\AC22_HotPumpBrg1104Master\AC23_FR_TODD_MILE

TH710024.SIT • 10/29/2004 • 9:52:49 AM

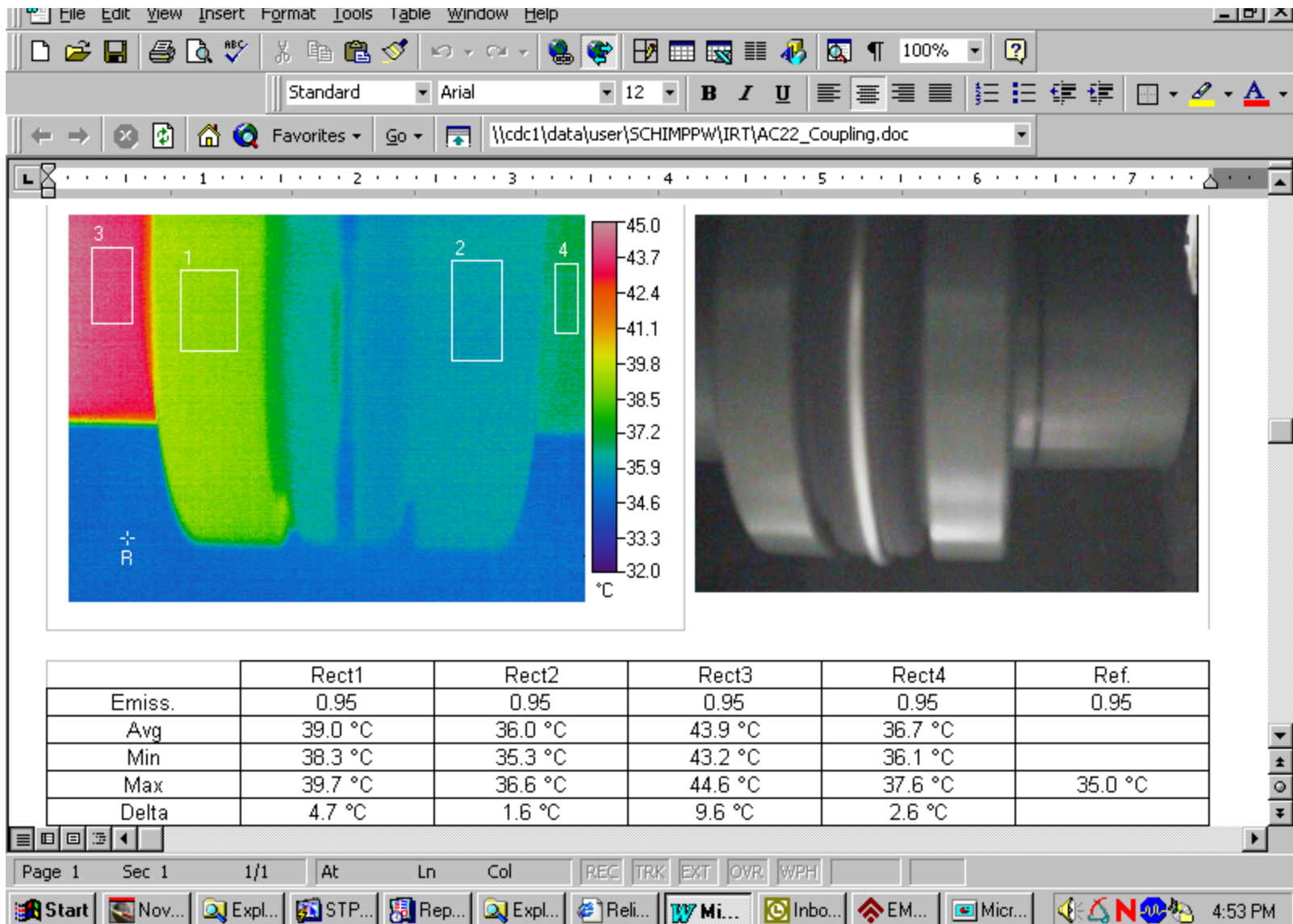



	Rect1	Rect2	Rect3	Rect4
Min	103.5 °F	108.1 °F	107.2 °F	105.9 °F
Max	113.4 °F	110.4 °F	110.0 °F	111.0 °F
Delta				

COMMENTS: [Device 1 & 4 are temps of the shaft. Device 2 & 3 are temps of

Page 1 Sec 1 1/1 At Ln Col REC TRK EXT OVR WPH

AC22 - Coupling shows shaft much hotter on the pump end (left end) than motor end). Note degC



Sister coupling (ac21) ~ 33C. Shaft temp same on both sides coupling

Microsoft Word - AC21_Coupling_.doc

File Edit View Insert Format Tools Table Window Help

Standard Arial 12 B I U

E:\briefcase\AC22_HotPumpBrg1104Master\AC21_Coupling_.doc

TH710047.SIT • 11/02/2004 • 1:43:43 PM

	Ref.	Rect2	Rect3	Rect4
Emiss.	0.95	0.95	0.95	0.95
Avg		33.3 °C	33.3 °C	33.4 °C
Min		32.7 °C	32.6 °C	32.6 °C
Max	32.5 °C	34.1 °C	34.0 °C	34.2 °C

Page 1 Sec 1 1/1 At Ln Col REC TRK EXT OVR WPH