

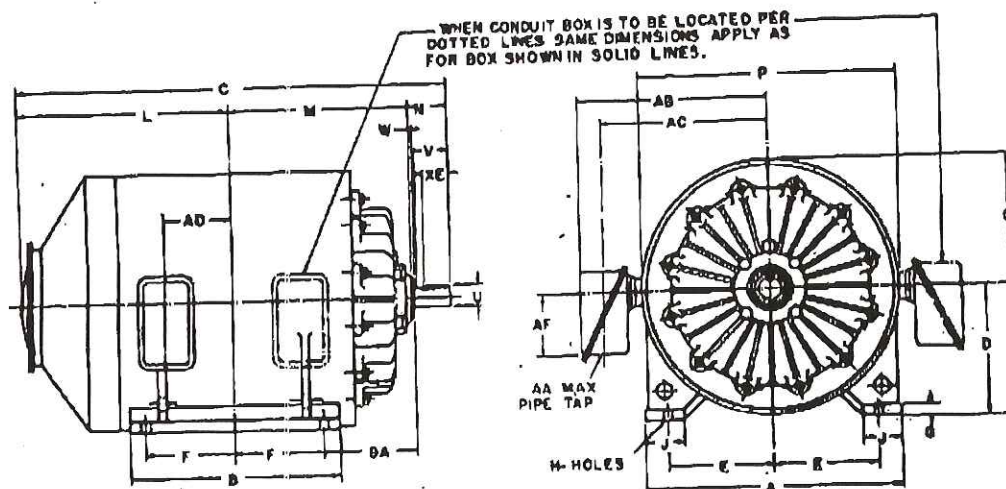
MG 2.1c



Page 304

LARGE SQUIRREL-CAGE INDUCTION MOTORS Type AZ — Totally-Enclosed Fan-Cooled — Standard Constant Speed — Ball Bearing*

Direct Connected



Outline Dimensions — in Inches

Frame	Weight (Lb)	B	C	F	L	M	N	O	U ①	W	AD	BA	Key		
													Width	Depth	XE
23A30	3200	23	53 3/4	10	27 1/4	21 1/4	5 1/2	33 1/16	2.375	3/4	6 3/4	11 1/4	3/4	3/4	3 3/4
23B30	3500	25	55 3/4	11	28 3/4	22 3/4	5 1/2	33 1/16	2.375	3/4	7 3/4	11 1/4	3/4	3/4	3 3/4
23C30	3800	27	57 3/4	12	29 3/4	23 3/4	5 1/2	33 1/16	2.375	3/4	8 3/4	11 1/4	3/4	3/4	3 3/4
23D30	3200	23	53 3/4	10	27 1/4	21 1/4	5 1/2	33 1/16	2.375	3/4	6 3/4	11 1/4	3/4	3/4	3 3/4
23E30	3300	25	55 3/4	11	28 3/4	22 3/4	5 1/2	33 1/16	2.375	3/4	7 3/4	11 1/4	3/4	3/4	3 3/4
23F30	3500	27	57 3/4	12	29 3/4	23 3/4	5 1/2	33 1/16	2.375	3/4	8 3/4	11 1/4	3/4	3/4	3 3/4
23N30 *	3350	23	57 1/4	10	28 3/4	22 1/4	6 1/16	33 1/16	2.375	2 1/16	6 3/4	14 1/4	3/4	3/4	3 3/4
23P30 *	3600	25	59 3/4	11	29 3/4	23 3/4	6 1/16	33 1/16	2.375	2 1/16	7 3/4	14 1/4	3/4	3/4	3 3/4
23R30 *	3900	27	61 1/4	12	30 3/4	24 3/4	6 1/16	33 1/16	2.375	2 1/16	8 3/4	14 1/4	3/4	3/4	3 3/4
28B30	4800	27 1/2	62 3/4	12	31 1/4	24 1/16	6 1/8	39 3/4	2.875	3/4	7 3/4	13	3/4	3/4	4 1/4
28E30	4800	27 1/2	62 3/4	12	31 1/4	24 1/16	6 1/8	39 3/4	2.875	3/4	7 3/4	13	3/4	3/4	4 1/4
28F30	5100	29 3/4	64 3/4	13	32 3/4	25 1/16	6 1/4	39 3/4	2.875	3/4	8 3/4	13	3/4	3/4	4 1/4
28K30	5400	31 3/4	66 3/4	14	33 3/4	26 1/16	6 1/4	39 3/4	2.875	3/4	9 3/4	13	3/4	3/4	4 1/4
30D30	6500	30 3/4	67 3/4	12 1/2	34	25 3/4	8 3/4	47 1/4	3.875	3/4	8 3/4	13 3/4	1	1	6 1/4
30E30	6750	32 1/4	69 3/4	13 1/2	34 3/4	26 3/4	8 3/4	47 1/4	3.875	3/4	9 3/4	13 3/4	1	1	6 1/4
30F30	7000	33 3/4	70 3/4	14 1/2	35 3/4	27 3/4	8 3/4	47 1/4	3.875	3/4	10	13 3/4	1	1	6 1/4
30K30	7500	35 3/4	72 3/4	15	36 3/4	27 3/4	8 3/4	47 1/4	3.875	3/4	10 3/4	13 3/4	1	1	6 1/4

For All	A	D ②	E	G	H	J	P	V	AA	AB	AC	AF
23 Frames	33	17	13 1/4	1 3/4	1 1/16	5	33 3/4	4 1/2	3	26 3/16	21 1/4	8
28 Frames	37	20	16	1 3/4	1 1/16	5	38 1/2	5 1/4	3	28 3/4	24 1/16	8
30 Frames	44	24	18 3/4	1 3/4	1 3/16	7	46 1/2	7 1/2	3	32 3/4	28 1/16	8

CERTIFIED FOR

Your order _____ Our order _____

Frame No. _____ Hp _____ Rpm _____

Volts _____ Phase _____ Cycles _____

ALLIS-CHALMERS MFG. CO., per _____ Date _____

Dimensions are sufficiently accurate to be approved by District Offices as outline drawings for construction purposes for ordinary installations.

*Shall limits for dimension U are +.000—-.001 in.

② Dimension D will not be exceeded. When exact dimension is required, shims up to 1/16 in. may be necessary under feet.

*All frames ball bearing except that asterisked direct-connected frames are sleeve bearing. End play for sleeve-bearing motors is approximately 1/4 in.

Consult factory for dimension prints for asterisked frames requiring ball bearings.