

## Replacement General Duty and Mill Duty Contactors

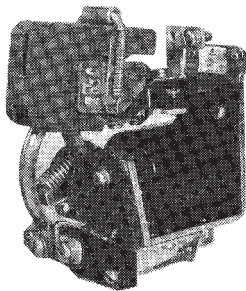


Fig. 10. IC28001607

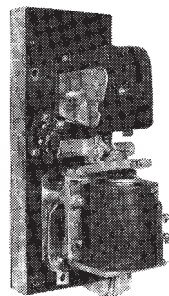


Fig. 11. IC2800Y105

### WHERE TO USE

Use for general dc industrial control such as machine-tool control, textile-machinery control and similar applications. Contactors have a steel base insulated from the electrical circuits. They can be mounted on either metal or insulating panels.

The 25 and 50 amp NO contactors above are to be used where exact replacement of the obsolete line of contactors is required. The contactor uses a non-asbestos arc chute and will provide make/interrupt ratings of 4 times the 8-hour rating of the NO pole. No other pole configurations are available. See DS303, page 5-2.

### WHERE TO USE

Use for crane, metal-rolling mill and all other heavy industry dc control. Contactors are available mounted or unmounted in either front- or back-connected forms. Use unit-mounted, front-connected form for mounting on metal or insulating panels. Use unmounted back-connected form for assembly directly on your own insulating panel.

**Select sizes** according to motor horsepower and time rating. Use forms with blow-out rating for dc power interruption.

**Time rating of normally closed contactors**—Coils of contactors with normally closed poles are for intermittent duty only. The coils can be energized 30 percent of the time but not more than 10 minutes continuously or 20 minutes continuously if only once out of three hours time. For continuous operation refer to company.

### HOW TO ORDER

Order by complete IC number including form letter, coil number, and interlock designation or by description if new application.

### MOUNTING DIMENSIONS (FRONT VIEW)

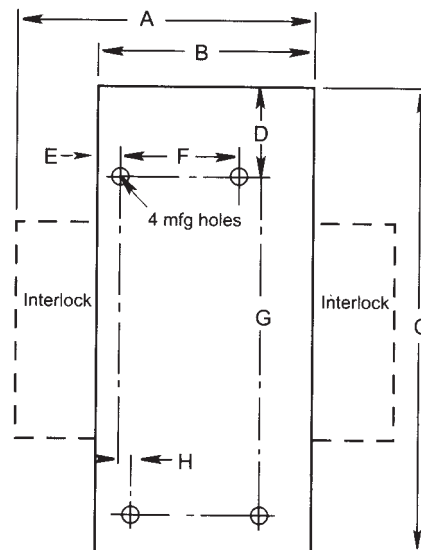


Fig. 12.

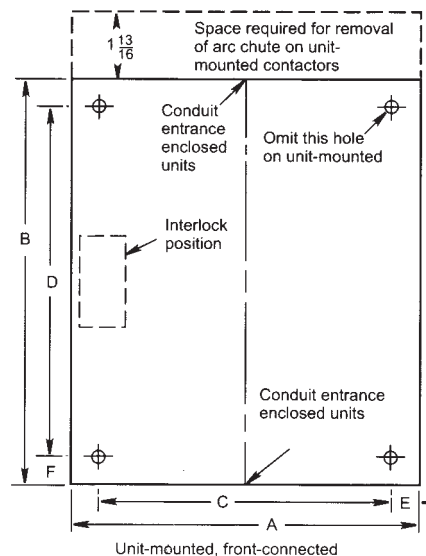


Fig. 13.

### REPLACEMENT GENERAL DUTY AND MILL DUTY CONTACTORS

IC2800 Form*	Available Coil # Suffix**	Available Interlock Suffix**
<b>1607CD</b> CE CF	2, 3, 52, 55	F, G, H F, G, H F, G, H
<b>1617CF</b> CE CC CB	OBS-Use DS303 OBS-Use DS303 OBS-Use DS303 OBS-Use DS303	B thru H B thru H B thru H B thru H
<b>Y105A, AE</b> <b>Y106A, AC</b> <b>1173N†</b> <b>1175R†</b>	26, 30, 33 2 thru 38 2 thru 40 2 thru 38	B thru G B thru G B thru G B thru G

\*\*Refer to company for other suffixes.

†Back connected.

IC2800 Form	Approx Wt in Lb	Fig. No.	Dimensions in Inches										Mounting Foot	
			A	B	C	D	E	F	G	H	Depth	Thickness	Hole Diam	
			<b>1607CD, CE, CF</b>	2 1/2	12	3 5/32	2 1/4	5 5/16	1 9/16	1 3/32	1	3 1/2	0	4 1/8
<b>1617CB, CC, CE, CF</b>	3 1/2	12	3 21/32	2 5/8	6 5/16	1 7/16	5/16	1 1/2	4 1/2	1/4	5 5/8	3/32	1/4	
<b>Y105</b>	23	13	6 3/8	16 1/2	5	12	1 1/16	3/4			7 11/16	1 9/16	7/16	
<b>Y106</b>	48	13	8 3/8	20	7	16	1 1/16	1			10 13/16	1 9/16	5/8	
<b>1173N</b>	15	12	5 1/4	4 1/4	12 3/4						6 3/4	overall depth	10 3/4	
<b>1175R</b>	30	12	5 5/8	5 3/8	17 5/8						8 3/8		13 5/8	

Data subject to change without notice