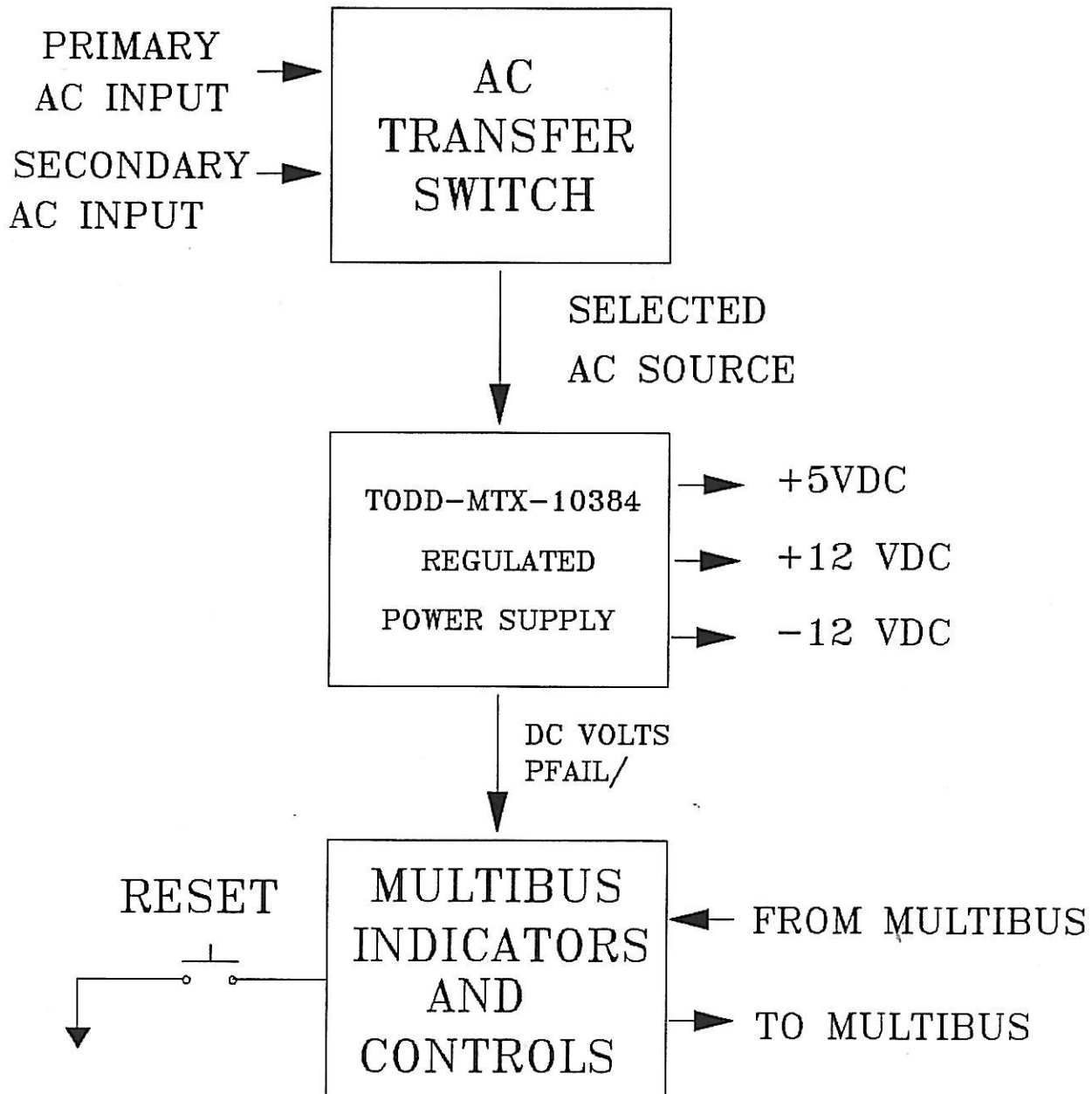


BLOCK DIAGRAM - DSC - MSC CARDS



1900

...

...

...

...

...

...

...

...

...

...

...

...

...

...

...

...

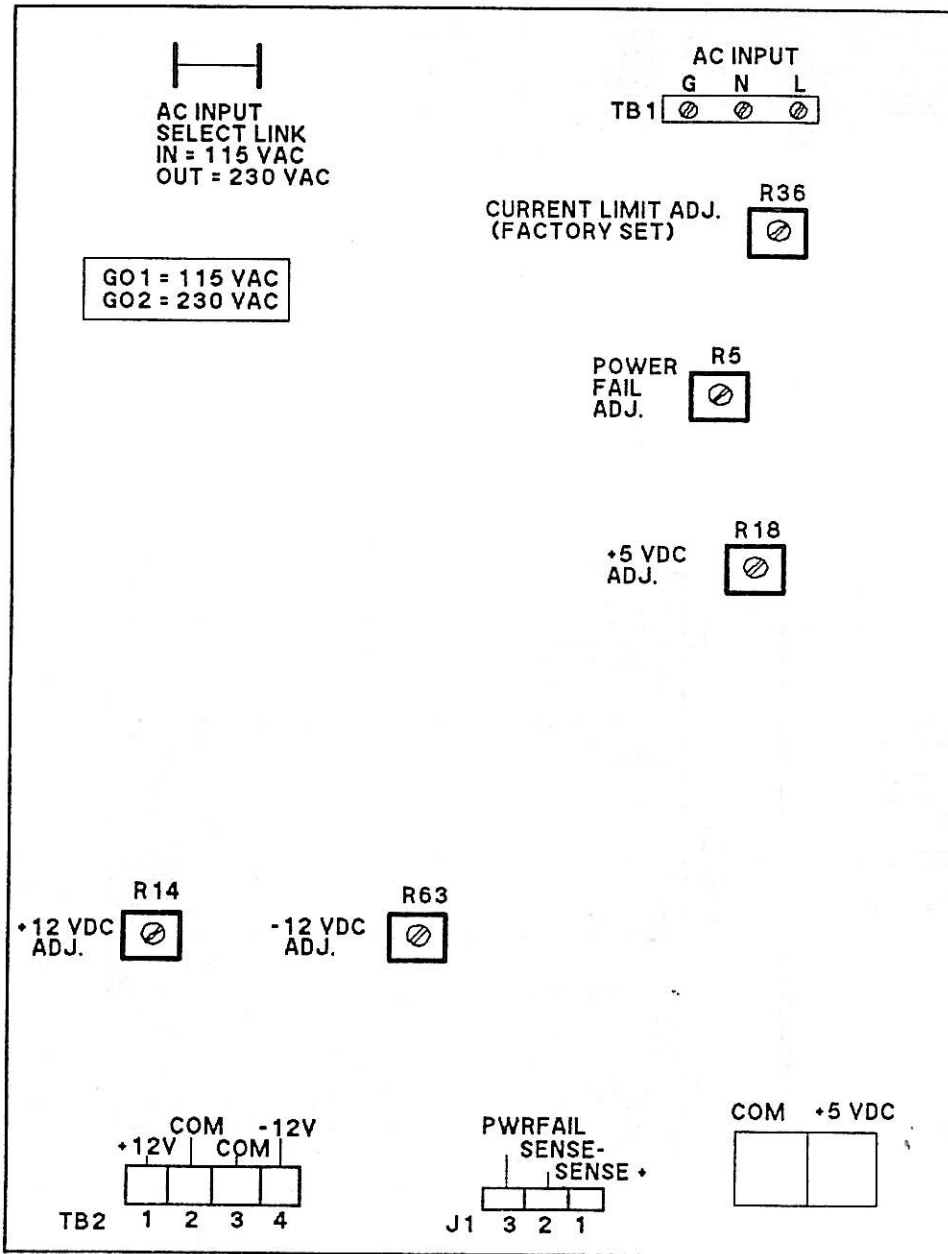
...

...

...

TOP VIEW

[DPU (MAC) FRONT OR MMI TOP]



ADJUSTMENTS
 FIRST: R18 - +5 VDC
 SECOND: R14 - +12 VDC
 THIRD: R63 - -12 VDC
 FOURTH: POWER FAIL

TODD POWER SUPPLIES
MODEL - MTX-403-10384

405A975

NEWPWR.DRW

TODD-1A

ITEM	FROM	TO
10	PL-6	SWT-11
11	PL-6	2ND-FI
12	PL-6	SAC-6
13	PL-6	SAC-6
14	PL-6	PS-TB1-1
15	PL-6	PS-TB1-1

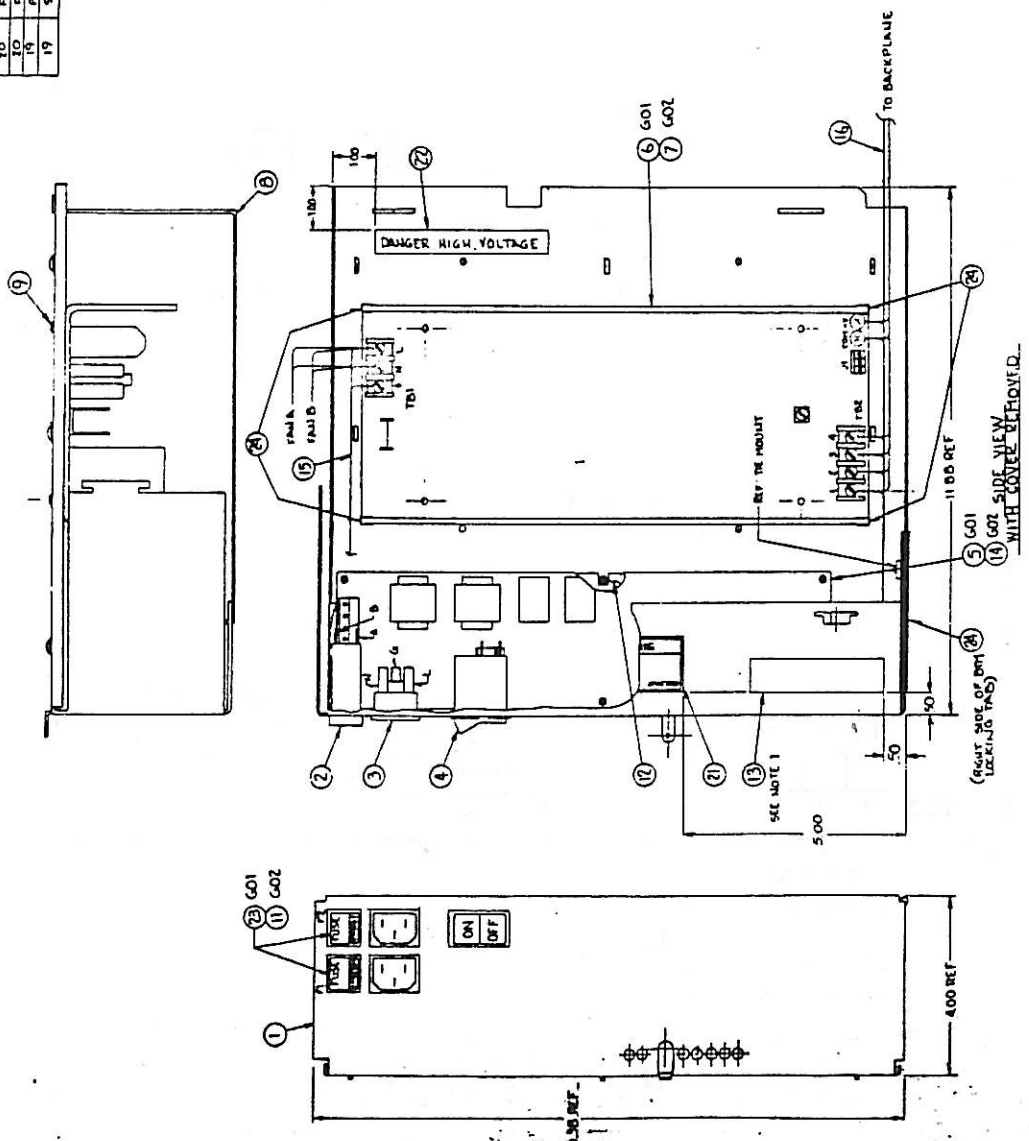
TODD-2

FILE: 1101 POWER SUPPLY ASSY

NO	DESCRIPTION	QTY	PART NO
1	POWER SUPPLY CHASSIS	1	40351300
2	LOCK HOUSING	1	40351300
3	POWER RECTIFIER	4	40351300
4	RESISTOR SWITCH	1	40351300
5	INTEGRATED CIRCUIT BOARD	1	40351300
6	MULTI OUTPUT PWR SUPPLY 115VAC	1	40351300
7	MULTI OUTPUT PWR SUPPLY 115VAC	1	40351300
8	POWER SUPPLY AIR DUCT	1	40351300
9	SCREW INSULATOR	2	40351300
10	SCREW	2	40351300
11	SCREW	2	40351300
12	SCREW	2	40351300
13	SCREW	2	40351300
14	SCREW	2	40351300
15	SCREW	2	40351300
16	SCREW	2	40351300
17	SCREW	2	40351300
18	SCREW	2	40351300
19	SCREW	2	40351300
20	SCREW	2	40351300
21	SCREW	2	40351300
22	SCREW	2	40351300
23	SCREW	2	40351300
24	SCREW	2	40351300
25	SCREW	2	40351300
26	SCREW	2	40351300
27	SCREW	2	40351300
28	SCREW	2	40351300
29	SCREW	2	40351300
30	SCREW	2	40351300
31	SCREW	2	40351300

A- LEAD JUMPERS AT 10-20 PER CHART
 D- G01 = 115VAC
 G02 = 230VAC
 C- DO NOT OPERATE UNIT WITHOUT AIR DUCT INSTALLED AS SUPPLY OVERHEATING MAY RESULT.
 D- IT-WRAP POWER CORDS TO PS. ASSY IN SUITABLE USA TO BE USED AT NEXT LEVEL.

NOTE: I-TYPE LABEL IT IS AS FOLLOWS:
 UNIT TYPE - MULTIBUS CHASSIS
 ASSY DWG - 40351300
 SERIAL NO. TO BE FILLED IN BY SHOP
 SO NO.
 G01 16K15 HZ AMPS
 G02 15VAC 47-63 10 5
 G02 230VAC 47-63 5



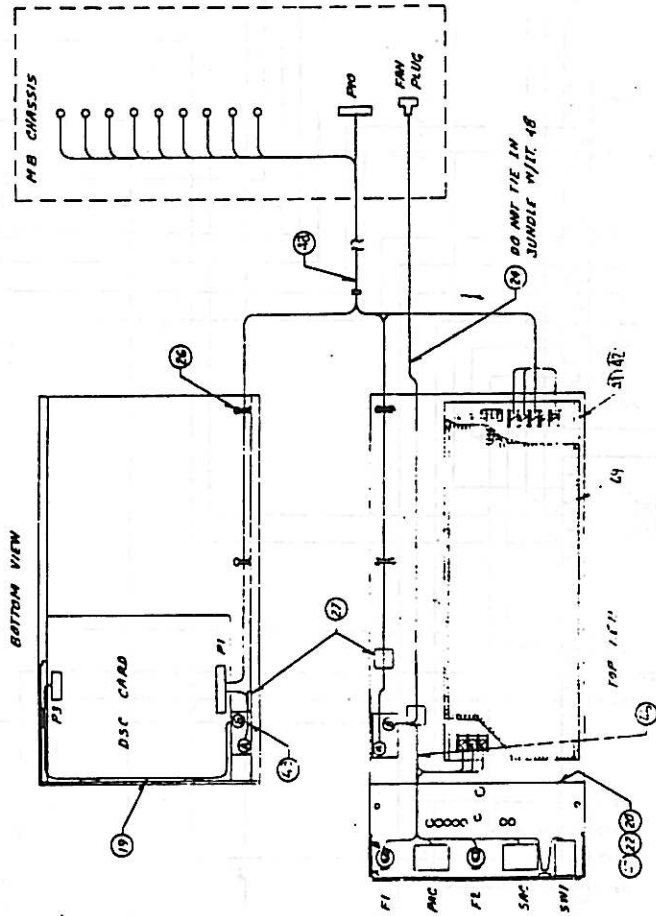
WESTINGHOUSE ELECTRIC CORPORATION
 TIME HILL POWER SUPPLY ASSEMBLY

NO	QTY	DESCRIPTION	UNIT	REMARKS
1	1	ASSEMBLY		
2	1	ASSEMBLY		
3	1	ASSEMBLY		
4	1	ASSEMBLY		
5	1	ASSEMBLY		
6	1	ASSEMBLY		
7	1	ASSEMBLY		
8	1	ASSEMBLY		
9	1	ASSEMBLY		
10	1	ASSEMBLY		
11	1	ASSEMBLY		
12	1	ASSEMBLY		
13	1	ASSEMBLY		
14	1	ASSEMBLY		
15	1	ASSEMBLY		
16	1	ASSEMBLY		
17	1	ASSEMBLY		
18	1	ASSEMBLY		
19	1	ASSEMBLY		
20	1	ASSEMBLY		
21	1	ASSEMBLY		
22	1	ASSEMBLY		
23	1	ASSEMBLY		
24	1	ASSEMBLY		
25	1	ASSEMBLY		
26	1	ASSEMBLY		
27	1	ASSEMBLY		
28	1	ASSEMBLY		
29	1	ASSEMBLY		
30	1	ASSEMBLY		
31	1	ASSEMBLY		

40351300
 40351300
 40351300
 40351300

- INSTALL WIRING IN FOLLOWING ORDER. VERIFY AS SHOWN IN FIGURE.
1. PWR SWP AC CABLE (ITT. 463). VERIFY CLEAR TO PWR SWP.
 2. PWR CABLE (ITT. 29). CONNECT LOOSE TO PS-TIE-LOCK.
 3. JUMPER WIRES. CONNECT PER TABLE.

LINE	END	IN
30	MC-L	F1-A
31	MC-L	F2-A
47	PS-TIE-LOCK	MC-G
27	F1-B	MC-L
27	F2-B	MC-L



POWER SUPPLY CABLING

WESTINGHOUSE ELECTRIC CORPORATION
TITLE POWER SUPPLY ASSEMBLY

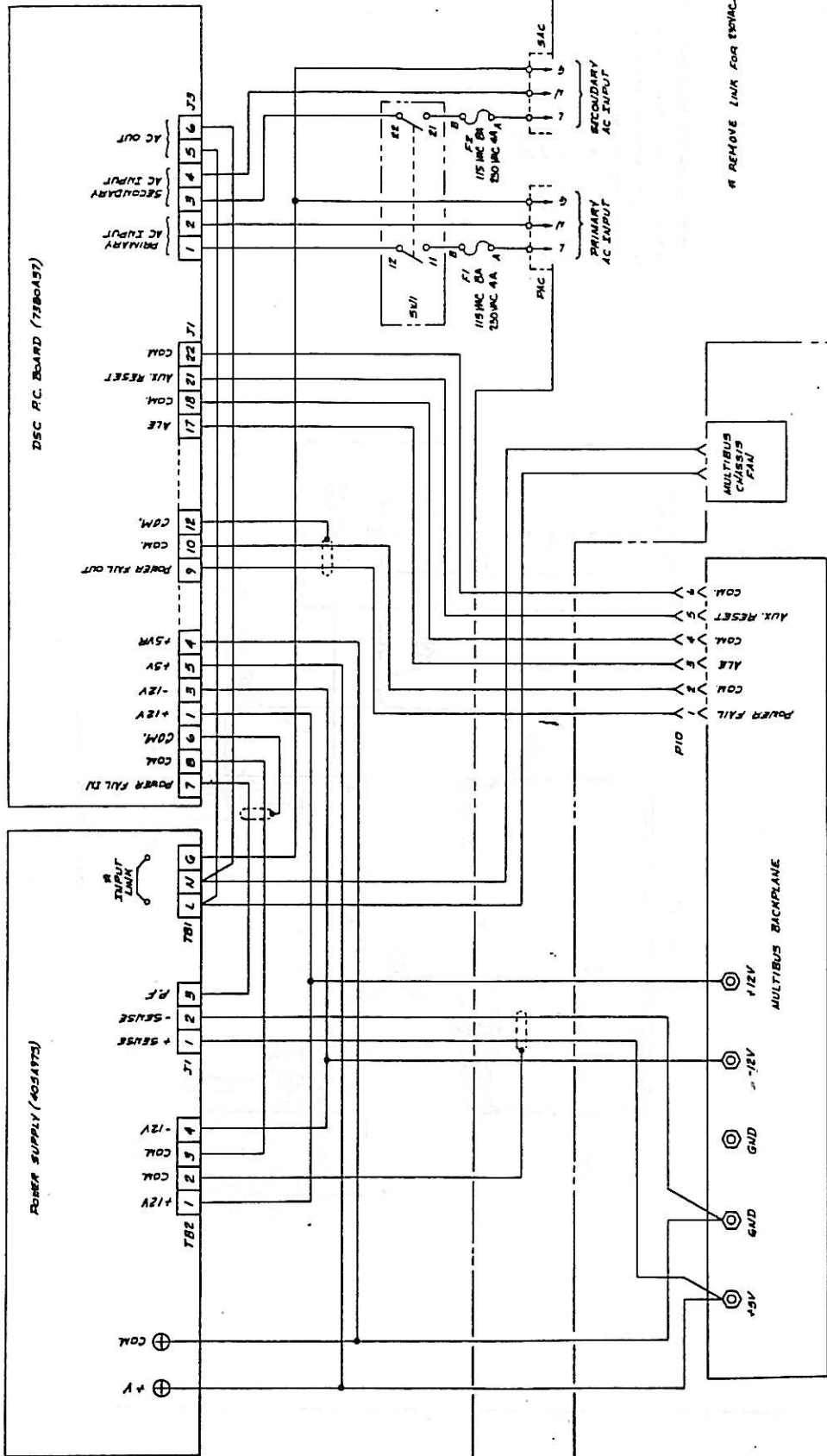
INDUSTRY SYSTEMS DIVISION

1034882

DATE 11-23-53

TODD-3

TODD-4

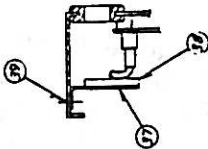


WESTINGHOUSE ELECTRIC CORPORATION
 TITLE VEEF DOUBLE MULTIBUS CHASSIS D
 PCB/SCH SCHEMATIC
 4D336

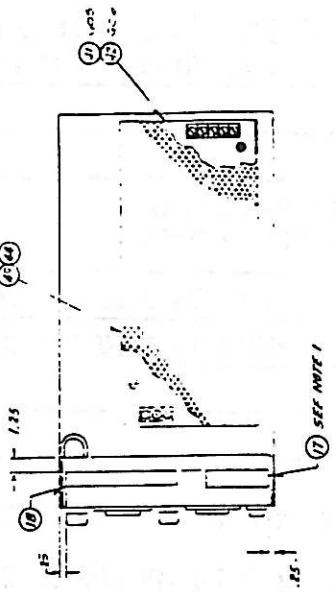
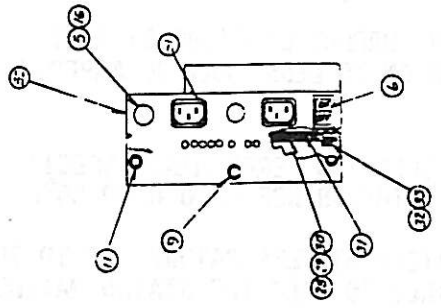
COA 4707-50
 7A
 17 & 18
 2-22-70
 2-22-70
 2-22-70

TITLE POWER SUPPLY ASSEMBLY

REV	DATE	BY	CHKD	APP
1	10/11/50	W. J. B.	J. H. S.	J. H. S.
2	10/11/50	W. J. B.	J. H. S.	J. H. S.
3	10/11/50	W. J. B.	J. H. S.	J. H. S.
4	10/11/50	W. J. B.	J. H. S.	J. H. S.
5	10/11/50	W. J. B.	J. H. S.	J. H. S.
6	10/11/50	W. J. B.	J. H. S.	J. H. S.
7	10/11/50	W. J. B.	J. H. S.	J. H. S.
8	10/11/50	W. J. B.	J. H. S.	J. H. S.
9	10/11/50	W. J. B.	J. H. S.	J. H. S.
10	10/11/50	W. J. B.	J. H. S.	J. H. S.
11	10/11/50	W. J. B.	J. H. S.	J. H. S.
12	10/11/50	W. J. B.	J. H. S.	J. H. S.
13	10/11/50	W. J. B.	J. H. S.	J. H. S.
14	10/11/50	W. J. B.	J. H. S.	J. H. S.
15	10/11/50	W. J. B.	J. H. S.	J. H. S.
16	10/11/50	W. J. B.	J. H. S.	J. H. S.
17	10/11/50	W. J. B.	J. H. S.	J. H. S.
18	10/11/50	W. J. B.	J. H. S.	J. H. S.
19	10/11/50	W. J. B.	J. H. S.	J. H. S.
20	10/11/50	W. J. B.	J. H. S.	J. H. S.
21	10/11/50	W. J. B.	J. H. S.	J. H. S.
22	10/11/50	W. J. B.	J. H. S.	J. H. S.
23	10/11/50	W. J. B.	J. H. S.	J. H. S.
24	10/11/50	W. J. B.	J. H. S.	J. H. S.
25	10/11/50	W. J. B.	J. H. S.	J. H. S.
26	10/11/50	W. J. B.	J. H. S.	J. H. S.
27	10/11/50	W. J. B.	J. H. S.	J. H. S.
28	10/11/50	W. J. B.	J. H. S.	J. H. S.
29	10/11/50	W. J. B.	J. H. S.	J. H. S.
30	10/11/50	W. J. B.	J. H. S.	J. H. S.
31	10/11/50	W. J. B.	J. H. S.	J. H. S.
32	10/11/50	W. J. B.	J. H. S.	J. H. S.
33	10/11/50	W. J. B.	J. H. S.	J. H. S.
34	10/11/50	W. J. B.	J. H. S.	J. H. S.
35	10/11/50	W. J. B.	J. H. S.	J. H. S.
36	10/11/50	W. J. B.	J. H. S.	J. H. S.
37	10/11/50	W. J. B.	J. H. S.	J. H. S.
38	10/11/50	W. J. B.	J. H. S.	J. H. S.
39	10/11/50	W. J. B.	J. H. S.	J. H. S.
40	10/11/50	W. J. B.	J. H. S.	J. H. S.
41	10/11/50	W. J. B.	J. H. S.	J. H. S.
42	10/11/50	W. J. B.	J. H. S.	J. H. S.
43	10/11/50	W. J. B.	J. H. S.	J. H. S.
44	10/11/50	W. J. B.	J. H. S.	J. H. S.
45	10/11/50	W. J. B.	J. H. S.	J. H. S.
46	10/11/50	W. J. B.	J. H. S.	J. H. S.
47	10/11/50	W. J. B.	J. H. S.	J. H. S.
48	10/11/50	W. J. B.	J. H. S.	J. H. S.
49	10/11/50	W. J. B.	J. H. S.	J. H. S.
50	10/11/50	W. J. B.	J. H. S.	J. H. S.



SECTION A-A



325 1 000

WESTINGHOUSE ELECTRIC CORPORATION

INDUSTRY SYSTEMS DIVISION

DATE: 10/11/50

BY: W. J. B.

CHKD: J. H. S.

APP: J. H. S.

PROJECT: 44-1000

SHEET: 5 OF 4

OPTH. _____
 CHLD. _____
 SUPV. _____
 APPD. _____
 APPD. _____
 APPD. _____
 2 DEO 44965-
 FEATURE 5
 ADDED
 JPA 1-14-87
 F.J.T. 1-16-87
 G.M.H. 1-22-87
 DEO 45395-3
 FEATURE 6
 ADDED
 J.T. 2-1-87
 ADDED
 501-502
 ADDED
 REVISED
 INPUT SPEC
 ADD NOTE 1
 SEE SM 3 FOR
 B/M NOTES
 BHT. 3 ADDED
 J.P.A. 1-14-87
 F.J.T. 1-16-87
 AUG 8 1987

SH	REV
1	3
2	1
3	3

WESTINGHOUSE ELECTRIC CORPORATION

INDUSTRY ELECTRONICS DIVISION
PITTSBURGH PA USA



TITLE POWER SUPPLY, AC TO DC 3 OUTPUT

SYM.	ITEM	DESCRIPTION-MATERIAL DIMENSIONS IN INCHES	PART NO.	SYM										
				6R.	B	C	3	4	5	6	7	8		
	1	POWER SUPPLY - 115VAC TO 3 OUTPUT DC	405A431H01		1									
A	2	POWER SUPPLY - 230VAC TO 3 OUTPUT DC	405A431H02			1								
D	3	LABEL	20304		1	1								

DIMENSIONS: 11.82" x 7.48" x 2.95" MAX. (300 x 190 x 75mm)

INPUT: AC: 48-63 HZ 196-264V AND 98-132V. 115 INPUT IS SELECTED BY LINKING TERMINALS LABELED "LINK FOR 115V". REMOVE THIS LINK FOR 230V INPUT.

INRUSH CURRENT LIMITING BY ACTIVE CIRCUIT LIMITS INPUT CURRENT PEAKS ON SWITCH ON TO LESS THAN 30 AMPERES UNDER WORST CASE CONDITIONS.

OUTPUTS: THE FOLLOWING PERFORMANCE SPECIFICATIONS ARE BASED UPON OPERATION OVER A TEMPERATURE RANGE OF 0°C TO 50°C.

OPERATION AT TEMPERATURES UP TO 70°C IS PERMISSIBLE BUT OUTPUT DERATES LINEARLY TO HALF THE STATED MAXIMUMS OVER THE 50°C TO 70°C RANGE.

MAXIMUM OUTPUT POWER	OUTPUT 1	OUTPUT 2	OUTPUT 3
200 W (CONVECTION COOLED)	5V 30A	12V 6A	12V 6A
300 W (FORCED AIR COOLED)	5V 40A	12V 6A	12V 6A

- FEATURES:**
1. FURNISHED WITH COVER.
 2. FURNISHED WITH MAINS TERMINAL SHROUD.
 3. FURNISHED WITH POWER FAIL SIGNAL.

THE POWER FAIL UNIT PROVIDES A WARNING SIGNAL WHEN THE INPUT VOLTAGE TO THE POWER SUPPLY IS INSUFFICIENT TO GUARANTEE OUTPUT FOR MORE THAN A FURTHER 5 MILLISECONDS. THE OUTPUT IS A TTL COMPATIBLE 5V SIGNAL WHICH IS CONNECTED TO PROVIDE A LOGIC '1' TO LOGIC '0' TRANSITION.

4. FURNISHED WITH REMOTE SENSE ON 5V OUTPUT.
5. UNIT MUST BE UL APPROVED WITH FILE NUMBERS AVAILABLE ON REQUEST.
6. FURNISHED WITH 115V LINK CONNECTED.

FOR B/M NOTES SEE SHEET 3

STANDARD DRAWING ANY CHANGE MUST BE AUTHORIZED BY DEVELOPMENT ENGINEERING DEPT.	405A431
--	----------------

TODD-6

MTL	CHD.	SPY.	APP.	APP.	APP.	S.O.	DEO 47975
-----	------	------	------	------	------	------	-----------

WESTINGHOUSE ELECTRIC CORPORATION

PROCESS CONTROL DIVISION
PITTSBURGH, PA. U.S.A.

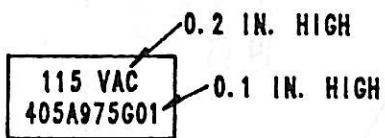


TITLE POWER SUPPLY TRIPLE OUTPUT
AC TO DC 400W

SYM	ITEM	DESCRIPTION	PART NO.	SYM	B	A	C								
				GR.	1	2	3	4	5	6	7	8			
E A	1	POWER SUPPLY - 115 VAC			1	1									
D	2	LABEL	20304		1	1									
	3	COVER	5999C29G01		-	-									

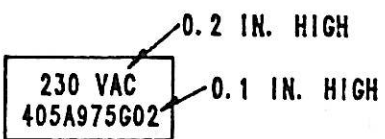
B/M NOTES:

- A. FOR G02 REMOVE INPUT SELECT LINK AND DISCARD. REPOSITION RED ARROW ON VENDOR TAG TO SHOW UNIT IS 230 VAC INPUT.
- B. PRINT LABEL (ITEM 2), AS SHOWN BELOW USING LABEL COMPUTER.



ATTACH LABEL TO END OF POWER SUPPLY AS SHOWN ON SHEET 4.

- C. PRINT LABEL (ITEM 2), AS SHOWN BELOW USING LABEL COMPUTER.



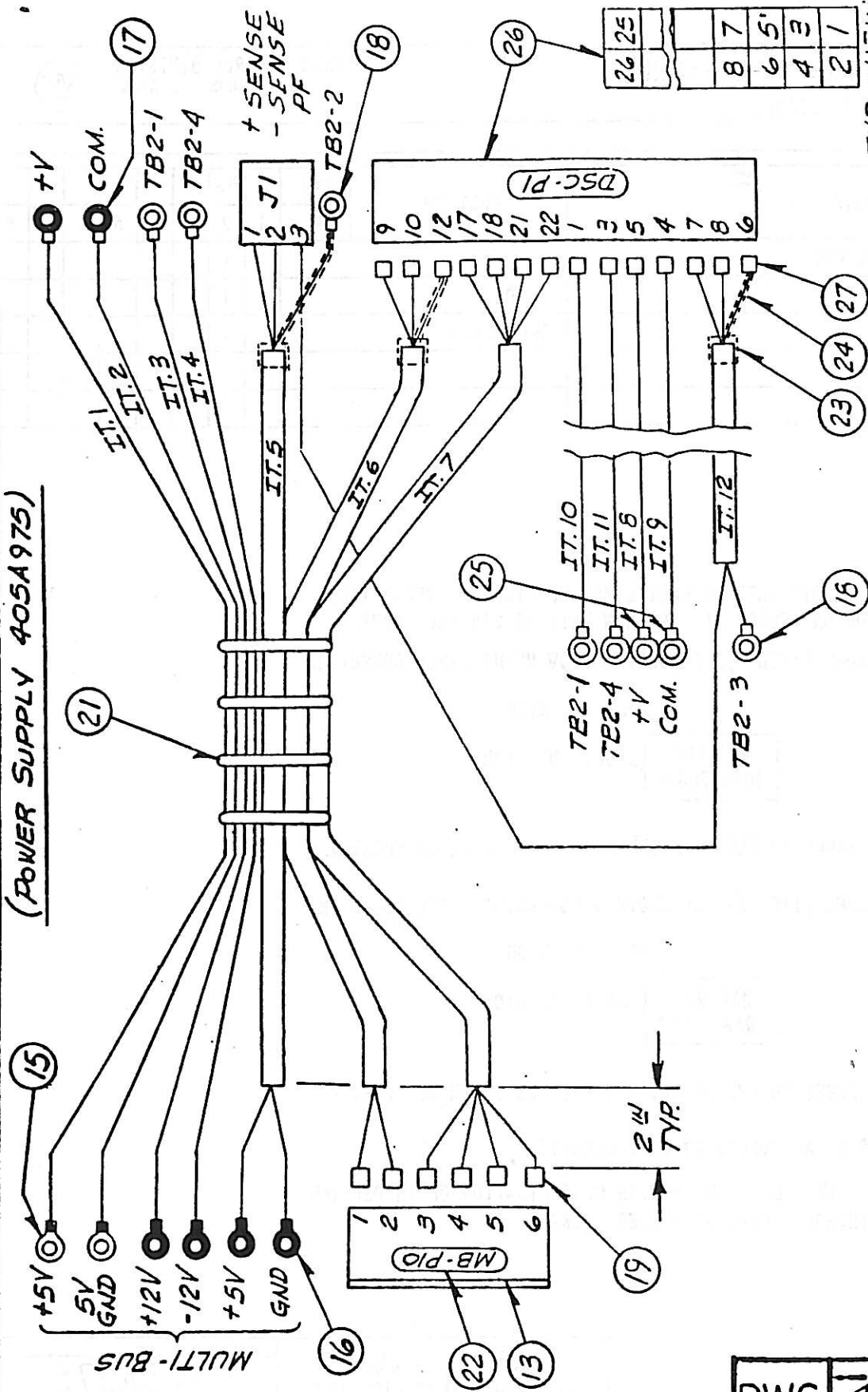
ATTACH LABEL TO END OF POWER SUPPLY AS SHOWN ON SHEET 4.

- D. LABEL TO BE ASSEMBLED BY WESTINGHOUSE.
- E. INCLUDE TEST DATA SHEET WITH CERTIFICATION OF INSPECTION TO WESTINGHOUSE DRAWING NUMBER 405A975.

STANDARD DWG. ANY CHANGE MUST BE AUTHORIZED BY DEVELOPMENT ENGINEERING DEPT.	405A975
--	---------

TODD-7

(POWER SUPPLY 405A975)



TYP. WIRING VIEW OF SIGNAL (SEE NOTE 8)

FOR ASSY. PROCEDURE NOTES SEE SHT. 8.

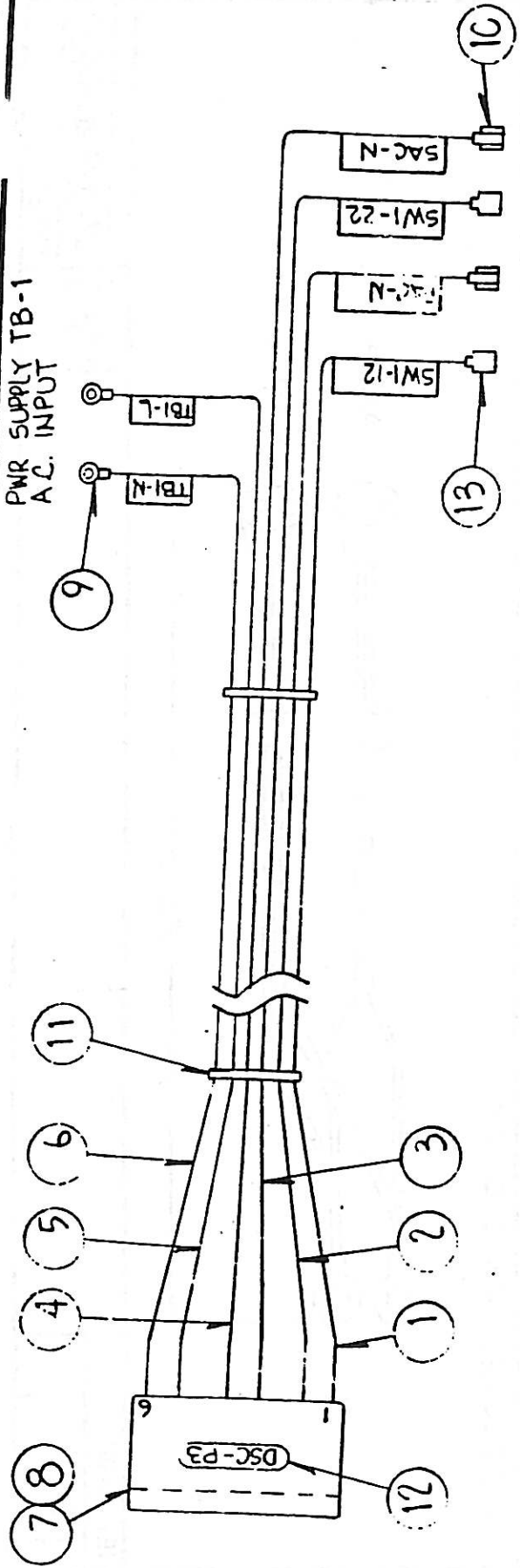
TODD-00

DWG 405A430

DWG 405A430 SHEET 7

REVISION

17



ASSY PROC.:

1. STRIP WIRES TO RT & FS PINS .19±.02 (3/16).
2. (a) LABEL CONN. DSC-P3 WITH IT. 12.
(b) LABEL OTHER ENDS OF WIRES TO RT & FS BY BEST METHOD.
3. (a) INSERT WIRE INTO CONN DSC-P3.
(b) ASSEMBLE COVER ONTO CONN DSC-P3.
4. ADD TY-WRAPPS AT APPROX. 3IN. FROM DSC-P3.

GO1

DWG 405A843

REVISION

1			
---	--	--	--

DWG 405A843
SHEET 3

TODD-9

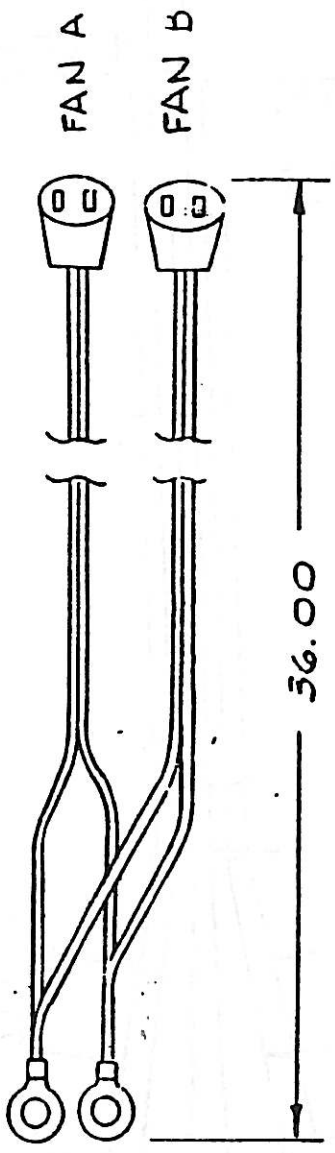
DESCRIPTION

ASS'Y CONSISTS OF FOLLOWING

CABLE PREP. & HOOD IDENTIFICATION

ITEM	PART NAME	PART NUMBER	QTY	FROM HOOD IDENT.		TO HOOD IDENT.		FIG NO.
				QTY	QTY	QTY	QTY	
405A843G03				01	PWR. SUP.	02	FAN	
001	FAN CORD	405A437H01	20		TB1-L/RT6-14		A f B LINE *	
002	RT6-14	17131	20		TB1-N/RT6-14		A f B NEUT. *	

* DENOTES DOUBLE CRIMP



REVISION

1			
---	--	--	--

DWG 405A843
SHEET 1

DWG 405A843