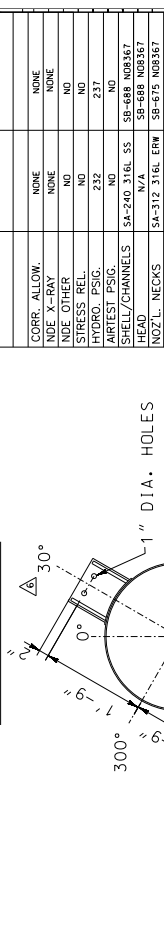
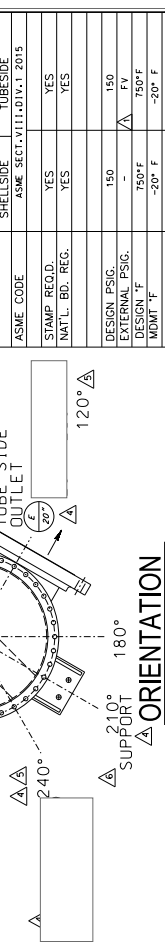
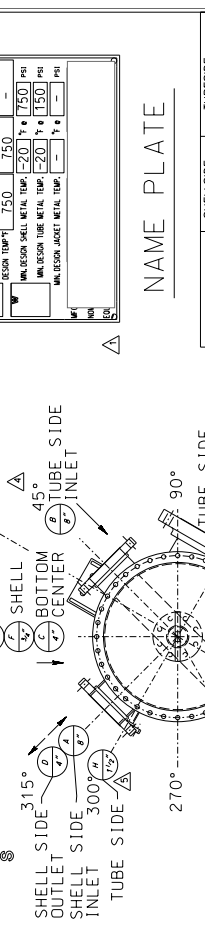
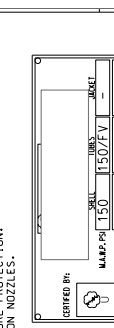


NOZZLE SCHEDULE

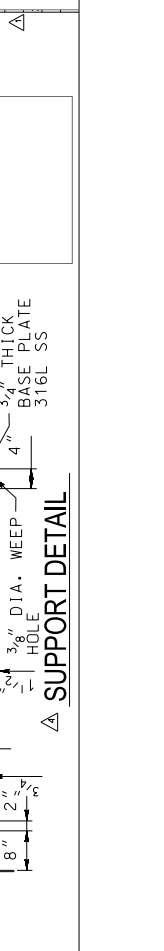
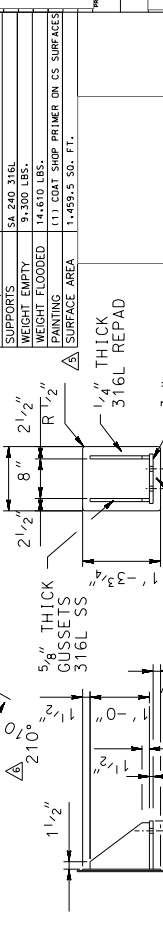
MARK	SIZE	DATE	TYPE	NOZZLE FLANGE	MATERIAL	NOZZLE NECK	PROJECTION	ORIENTATION	SERIES
A	8"	1	RFSO	300#	SA-182 316L	80	SA-312 316L	6"	A 315°
B	8"	1	RFSO	300#	SA-462 N08367	40	SA-475 N08367	6"	A 45°
C	4"	1	RFSO	300#	SA-462 N08367	40	SA-475 N08367	6"	BTL. CTR.
D	4"	1	RFSO	300#	SA-182 316L	40	SA-312 316L	6"	A 315°
E	4"	1	RFSO	300#	SA-462 N08367	40	SA-475 N08367	6"	A 45°
F	1/2"	1	RFSO	300#	SA-182 316L	25	SA-312 316L	6"	A 315°
G	1/2"	1	RFSO	300#	SA-462 N08367	25	SA-475 N08367	6"	A 45°
H	1/2"	1	RFSO	300#	SA-182 316L	25	SA-312 316L	6"	A 315°
I	1/2"	1	RFSO	300#	SA-462 N08367	25	SA-475 N08367	6"	A 45°
J	1/2"	1	RFSO	300#	SA-182 316L	25	SA-312 316L	6"	A 315°
K	1/2"	1	RFSO	300#	SA-462 N08367	25	SA-475 N08367	6"	A 45°
L	1/2"	1	RFSO	300#	SA-182 316L	25	SA-312 316L	6"	A 315°
M	1/2"	1	RFSO	300#	SA-462 N08367	25	SA-475 N08367	6"	A 45°
N	1/2"	1	RFSO	300#	SA-182 316L	25	SA-312 316L	6"	A 315°
O	1/2"	1	RFSO	300#	SA-462 N08367	25	SA-475 N08367	6"	A 45°

GENERAL NOTES:
 1. NOZZLE HOLES SHALL STRADDLE 0-180 CENTERLINE OR ITS PARALLEL.
 2. COVER ALL FLANGES AND MACHINED SURFACES PRIOR TO SHIPMENT.
 3. THE UNIT IS NOT DESIGNED FOR UPLIFT SERVICE PROTECTION.
 4. THE UNIT IS NOT DESIGNED FOR PROTECTION.
 5. THE UNIT IS NOT DESIGNED FOR LOADINGS ON NOZZLES.



NAME PLATE

ASME CODE	SHELLSIDE	TUBESIDE
ASME SECT. VIII, DIV. 1, 2015	YES	YES
STAMP REQ'D.	YES	YES
NAT'L. BD. REG.	YES	YES
DESIGN PSIG.	150	150
EXTERNAL PSIG.	-	FV
DESIGN °F	750°F	750°F
MDMT °F	-20° F	-20° F
CORR. ALLOW.	NONE	NONE
NDE X-RAY	NONE	NONE
STRESS REL.	NO	NO
HEAT TREAT.	NO	NO
WELDING PROC.	232	231
SHELL CHANNELS	SA-240 316L SS	SB-688 N08367
HEAD NECKS	SA-312 316L ERW	SB-675 N08367
NOZZL. FLGS.	SA-182 316L SS	SB-462 N08367
BODY FLGS.	SA-266 GR. 4 W/ SB-688 N08367 CLAD	
CHANNEL COVERS	SA-516 GR. 70 W/SB-688 N08367 CLAD	
TUBESHEETS	SB-688 N08367	
TUBES	1" OD X 0.083" AW SB-676 N08367 M.L.D.	
STUDS	SA193-87 STUDS	
NUTS	SA194-2H NUTS	
GASKETS	171E GRAPHONIC RING 316FG	
BAFFLES	SX 240 316L	
TILE RODS/SPACERS	316L	
SUPPORTS	SX 240 316L	
WEIGHT EMPTY	73-500 LBS.	
WEIGHT FLOODED	144-000 LBS.	
PAINTING	131 COAT SWAP PRIMER ON CS SURFACES	
SURFACE AREA	1,459.5 SQ. FT.	



HEAT EXCHANGER
 29-159 AEL