

Data Export Wizard

CAESAR II Data Export Wizard

The Data Export Wizard is capable of exporting CAESAR II Input and Static Output data to various other formats.

Presently, the formats are:

- 1. Microsoft Access (\*.mdb)
- 2. Microsoft Excel Compatible Text (\*.txt)
- 3. Extensible Markup Language (\*.xml)

Click on the Next button to proceed.

< Back      Next >      Cancel      Help

INTERGRAPH

File
Forms
Analysis
Output
Interfaced
Utilities
Help

CAESAR II CAESAR II Data Export Wizard

Model File Data Matrix Wizard

AFT BIPULSE

FlowMaster

Pipeplus

Intergraph Smart3D PCC

Intergraph CADPIPE Import PCC

Hydraulic

CAD

FBA Tools

Help

File
Input
Analysis
Output
Language
Tools
Diagnostics
ESL
view
FBA Tools
Help

INTERGRAPH

Input and Output Files

ES3

Select CAESAR II File:

Specify Revision Number:

Export Output Data Also  Use System Units

Select Data Export Output File:

### CAESAR II Input Export Options

Inout Export Options

<input type="checkbox"/> Elements	<input checked="" type="checkbox"/> Displacements	<input type="checkbox"/> Allowables	<input checked="" type="checkbox"/> Hangers
<input type="checkbox"/> Bends	<input checked="" type="checkbox"/> Forces/Moments	<input type="checkbox"/> SIF & Tees	<input type="checkbox"/> Reducers
<input type="checkbox"/> Roids	<input type="checkbox"/> Uniform Loads	<input type="checkbox"/> Nozzles (WRC 257)	<input type="checkbox"/> Flanges
<input type="checkbox"/> Expansion Joints	<input type="checkbox"/> Wind/Wave	<input type="checkbox"/> Nozzles (API 650)	<input type="checkbox"/> Tile
<input type="checkbox"/> Restraints	<input type="checkbox"/> Offsets	<input type="checkbox"/> Nozzle (BS 5500)	<input type="checkbox"/> Equipment
<input type="checkbox"/> Select All		<input type="checkbox"/> Clear All	

### CAESAR II Input Export Options

Input Export Options

- Elements
- Displacements
- Allowable
- Hangars
- Bends
- Forces/Moments
- SIF & Tees
- Reducers
- Rigid
- Expansion
- Restraints

CZEXPORT

**i** CAESAR II input data export successfully!

OK

CAESAR II Output Report Options

**Static Load Cases**

- CASE 1 (MERM)
- CASE 2 (MGR) W/D1-T1-P1
- CASE 3 (HDI) WW4P-H
- CASE 4 (HDI) WW4P-H
- CASE 5 (DPE) W/D1-T2-P2-H
- CASE 6 (SUS) W/P1-H
- CASE 7 (SUS) W/P2-H
- CASE 8 (EXP) L/S-L/S-L7
- CASE 9 (EXP) L/S-L/S-L7
- CASE 10 (EXP) L10-L4-L5

Select All Clear All

**Output Options**

- Unplacement Reports
- Restraint Reports
- Restraint Summary
- Global Force Reports
- Local Force Reports
- Stresses Reports
- Hanger Reports
- Equipment Reports

Select All Clear All

< Back
Finish
Cancel
Help

**CAESAR II Output Report Options**

Static Load Cases

- CASE 1 (HGR) W
- CASE 2 (HGR) W+D1+T1+P1
- CASE 3 (HYD) WW+HP+H
- CASE 4 (HPE) W+D1+T1+P1+H
- CASE 5 (OPE) W+D1+T2+P2+H
- CASE 6 (HGR) W+D1+T1+P1
- CASE 7 (HGR) W+D1+T1+P1
- CASE 8 (HGR) W+D1+T1+P1
- CASE 9 (HGR) W+D1+T1+P1
- CASE 10 (HGR) W+D1+T1+P1
- CASE 11 (HGR) W+D1+T1+P1
- CASE 12 (HGR) W+D1+T1+P1
- CASE 13 (HGR) W+D1+T1+P1
- CASE 14 (HGR) W+D1+T1+P1
- CASE 15 (HGR) W+D1+T1+P1
- CASE 16 (HGR) W+D1+T1+P1
- CASE 17 (HGR) W+D1+T1+P1
- CASE 18 (HGR) W+D1+T1+P1
- CASE 19 (HGR) W+D1+T1+P1
- CASE 20 (HGR) W+D1+T1+P1
- CASE 21 (HGR) W+D1+T1+P1
- CASE 22 (HGR) W+D1+T1+P1
- CASE 23 (HGR) W+D1+T1+P1
- CASE 24 (HGR) W+D1+T1+P1
- CASE 25 (HGR) W+D1+T1+P1
- CASE 26 (HGR) W+D1+T1+P1
- CASE 27 (HGR) W+D1+T1+P1
- CASE 28 (HGR) W+D1+T1+P1
- CASE 29 (HGR) W+D1+T1+P1
- CASE 30 (HGR) W+D1+T1+P1
- CASE 31 (HGR) W+D1+T1+P1
- CASE 32 (HGR) W+D1+T1+P1
- CASE 33 (HGR) W+D1+T1+P1
- CASE 34 (HGR) W+D1+T1+P1
- CASE 35 (HGR) W+D1+T1+P1
- CASE 36 (HGR) W+D1+T1+P1
- CASE 37 (HGR) W+D1+T1+P1
- CASE 38 (HGR) W+D1+T1+P1
- CASE 39 (HGR) W+D1+T1+P1
- CASE 40 (HGR) W+D1+T1+P1
- CASE 41 (HGR) W+D1+T1+P1
- CASE 42 (HGR) W+D1+T1+P1
- CASE 43 (HGR) W+D1+T1+P1
- CASE 44 (HGR) W+D1+T1+P1
- CASE 45 (HGR) W+D1+T1+P1
- CASE 46 (HGR) W+D1+T1+P1
- CASE 47 (HGR) W+D1+T1+P1
- CASE 48 (HGR) W+D1+T1+P1
- CASE 49 (HGR) W+D1+T1+P1
- CASE 50 (HGR) W+D1+T1+P1
- CASE 51 (HGR) W+D1+T1+P1
- CASE 52 (HGR) W+D1+T1+P1
- CASE 53 (HGR) W+D1+T1+P1
- CASE 54 (HGR) W+D1+T1+P1
- CASE 55 (HGR) W+D1+T1+P1
- CASE 56 (HGR) W+D1+T1+P1
- CASE 57 (HGR) W+D1+T1+P1
- CASE 58 (HGR) W+D1+T1+P1
- CASE 59 (HGR) W+D1+T1+P1
- CASE 60 (HGR) W+D1+T1+P1
- CASE 61 (HGR) W+D1+T1+P1
- CASE 62 (HGR) W+D1+T1+P1
- CASE 63 (HGR) W+D1+T1+P1
- CASE 64 (HGR) W+D1+T1+P1
- CASE 65 (HGR) W+D1+T1+P1
- CASE 66 (HGR) W+D1+T1+P1
- CASE 67 (HGR) W+D1+T1+P1
- CASE 68 (HGR) W+D1+T1+P1
- CASE 69 (HGR) W+D1+T1+P1
- CASE 70 (HGR) W+D1+T1+P1
- CASE 71 (HGR) W+D1+T1+P1
- CASE 72 (HGR) W+D1+T1+P1
- CASE 73 (HGR) W+D1+T1+P1
- CASE 74 (HGR) W+D1+T1+P1
- CASE 75 (HGR) W+D1+T1+P1
- CASE 76 (HGR) W+D1+T1+P1
- CASE 77 (HGR) W+D1+T1+P1
- CASE 78 (HGR) W+D1+T1+P1
- CASE 79 (HGR) W+D1+T1+P1
- CASE 80 (HGR) W+D1+T1+P1
- CASE 81 (HGR) W+D1+T1+P1
- CASE 82 (HGR) W+D1+T1+P1
- CASE 83 (HGR) W+D1+T1+P1
- CASE 84 (HGR) W+D1+T1+P1
- CASE 85 (HGR) W+D1+T1+P1
- CASE 86 (HGR) W+D1+T1+P1
- CASE 87 (HGR) W+D1+T1+P1
- CASE 88 (HGR) W+D1+T1+P1
- CASE 89 (HGR) W+D1+T1+P1
- CASE 90 (HGR) W+D1+T1+P1
- CASE 91 (HGR) W+D1+T1+P1
- CASE 92 (HGR) W+D1+T1+P1
- CASE 93 (HGR) W+D1+T1+P1
- CASE 94 (HGR) W+D1+T1+P1
- CASE 95 (HGR) W+D1+T1+P1
- CASE 96 (HGR) W+D1+T1+P1
- CASE 97 (HGR) W+D1+T1+P1
- CASE 98 (HGR) W+D1+T1+P1
- CASE 99 (HGR) W+D1+T1+P1
- CASE 100 (HGR) W+D1+T1+P1

Output Options

- Displacement Reports
- Restraint Reports
- Restraint Summary

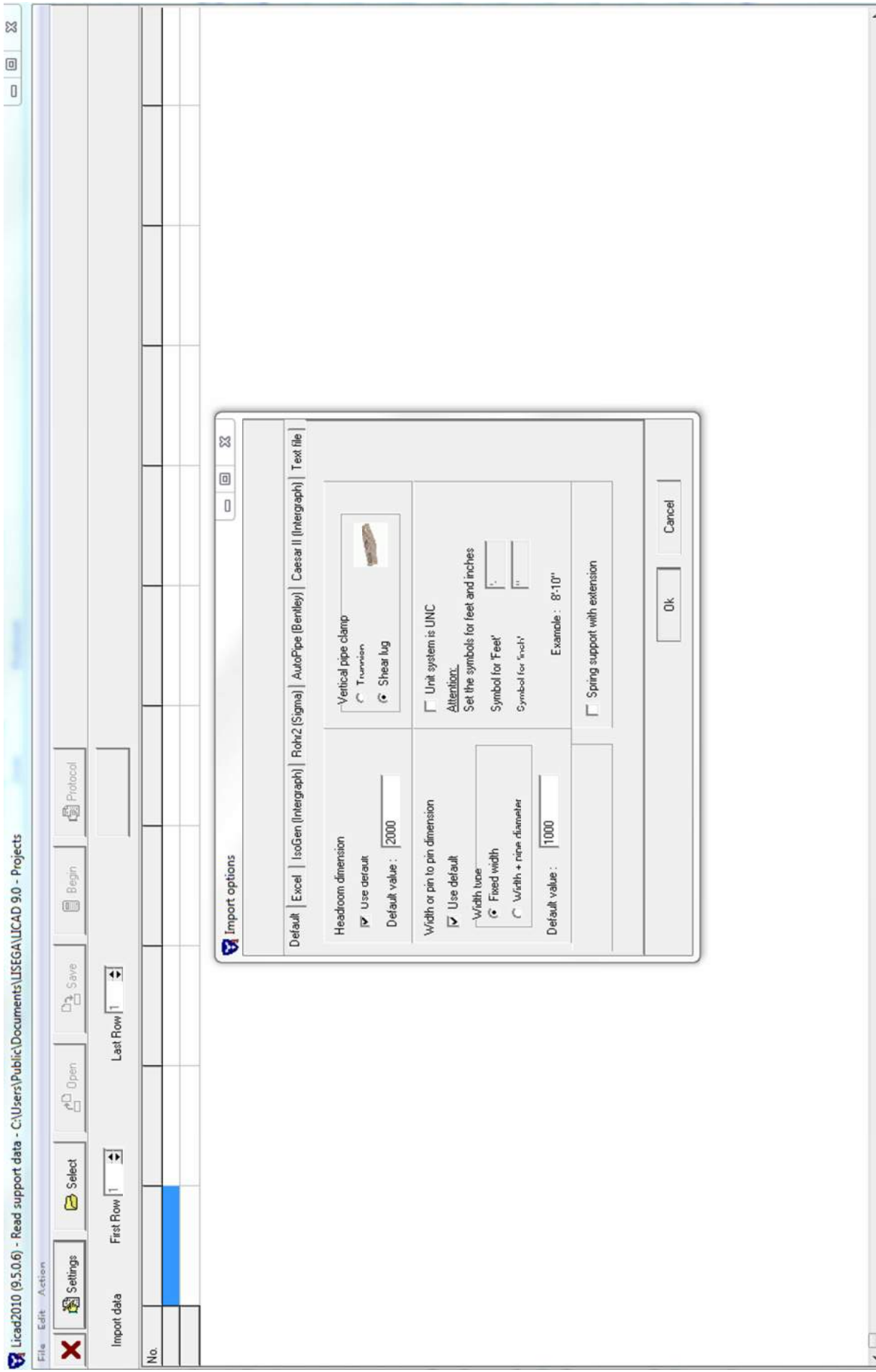
CAESAR II static output data export successfully!  
Open created file(s)?

OK Cancel

< Back Finish Cancel Help

MDB Viewer Plus

OUTPUT_GLOBAL_ELEMENT_FORCES	OUTPUT_HANGERS	OUTPUT_LOCAL_ELEMENT_FORCES	OUTPUT_RESTRAINTS	OUTPUT_RESTRAINTS_SUMMARY	OUTPUT_STRESSES	QVERSION	RESTRAINT_EXCLUDE_TABLE_USER	RESTRAINT_TYPES	SIF/TEE TYPE	VERSION
MEMBER_ID	UPDATE_TIME	MEMBER_ID	TYPE	MEMBER_ID	TYPE	QVERSION	RESTRAINT_EXCLUDE_TABLE_USER	RESTRAINT_TYPES	SIF/TEE TYPE	VERSION
0954-TM-6001-R1 HF	20160217 085451	15	1	531312310695648 237.140625	280668.869140625	0	5.4306640625	1.09949505329132	LISEGA	N.
0954-TM-6001-R1 HF	20160217 085451	43	1	3.3933963775635 3.08203125	11227.1962800625	0	233276367187	2.9379425048828	14.402720451355	LISEGA
0954-TM-6001-R1 HF	20160217 085451	47	1	0.3649425505692 0.44821875	7983.28799765625	0	233276367187	1.3913116453078	17.5207691192627	LISEGA
0954-TM-6001-R1 HF	20160217 085451	57	1	8.4081745147705 0.41796875	8647.779296875	0	233276367187	11.184226989746	14.703125	LISEGA
0954-TM-6001-R1 HF	20160217 085451	92	1	8.600689343262	7877.6640625	0	233276367187	1.3038101196289	16.2546768188477	LISEGA
0954-TM-6001-R1 HF	20160217 085451	112	1	1.8358306884766	36147.5	0	5.4306640625	3.2158126831055	19.6912479400635	LISEGA
0954-TM-6001-R1 HF	20160217 085451	125	1	7.8159400569336	314453125	0	5.4306640625	3.6866054534912	21.3911209106445	LISEGA
0954-TM-6001-R1 HF	20160217 085451	185	1	-40022993087769	626953125	0	5.4306640625	7.2416172027588	3.85388135910034	LISEGA
0954-TM-6001-R1 HF	20160217 085451	248	1	-21399688720703	300.546875	0	5.4306640625	7.738709401855	3.9743170738202	LISEGA
0954-TM-6001-R1 HF	20160217 085451	271	1	34907260548311	101720125	0	5.4306640625	1.9309687893333	3.0203126249945	LISEGA
0954-TM-6001-R1 HF	20160217 085451	274	1			0	5.4306640625			





No.															

File Edit Action

Settings  Select  Open  Save  Begin  Protocol

Import data First Row 1 Last Row 1

Import options

Default | Excel | IsoGen (Intergraph) | Rohr2 (Sigma) | AutoPipe (Bentley) | Caesar II (Intergraph) | Text file

LICAD support configuration "n" as default: 13

Movements:

- vertical + horizontal
- vertical + axial + lateral

Please check global coordinates for offset

Ok Cancel

File Edit Action		
<span>Settings</span> <span>Select</span> <span>Open</span> <span>Save</span> <span>Begin</span> <span>Protocol</span>		
Import data		
No.	First Row	Last Row
	1	1

Open

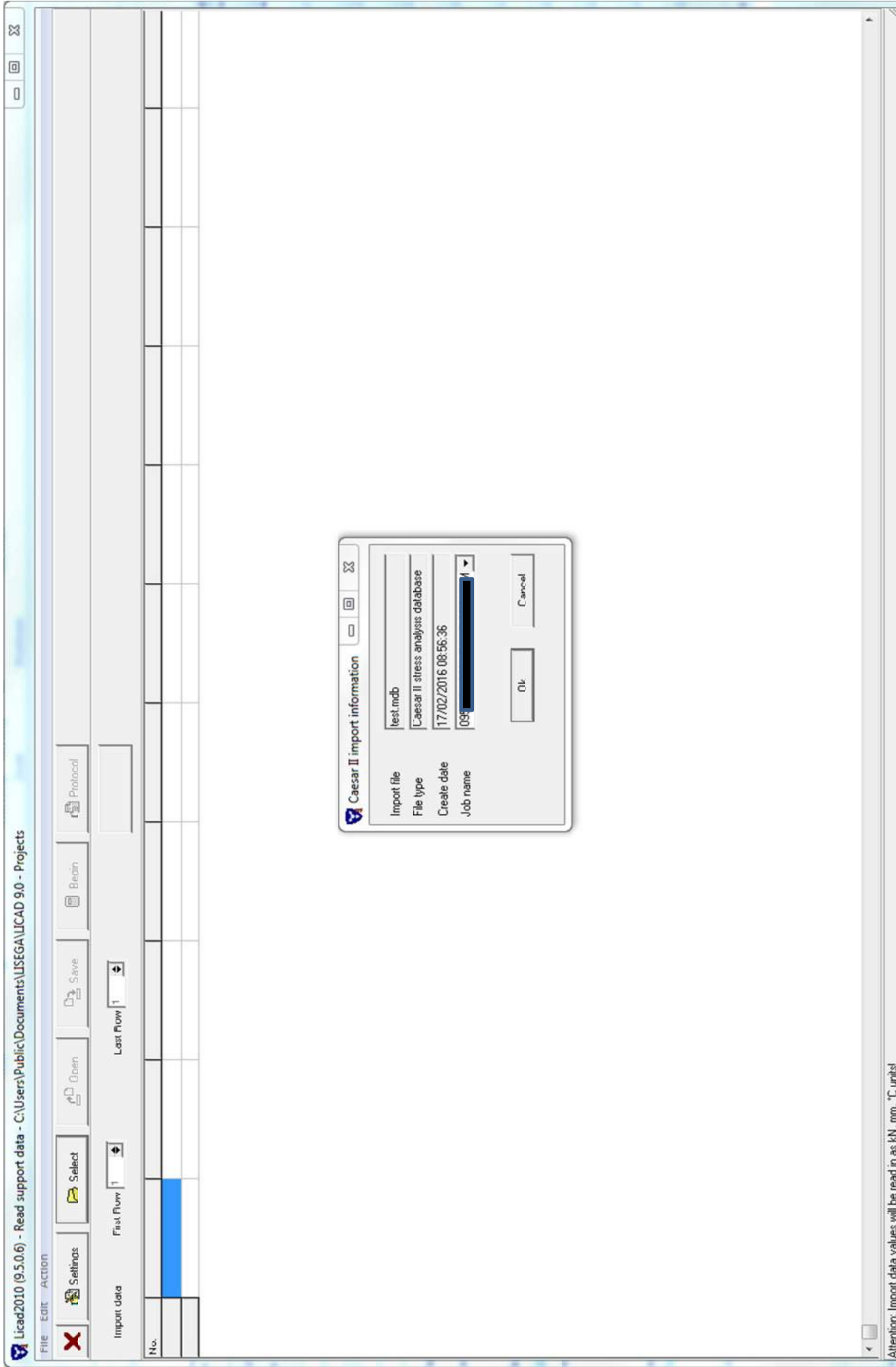
Look in: Downloads

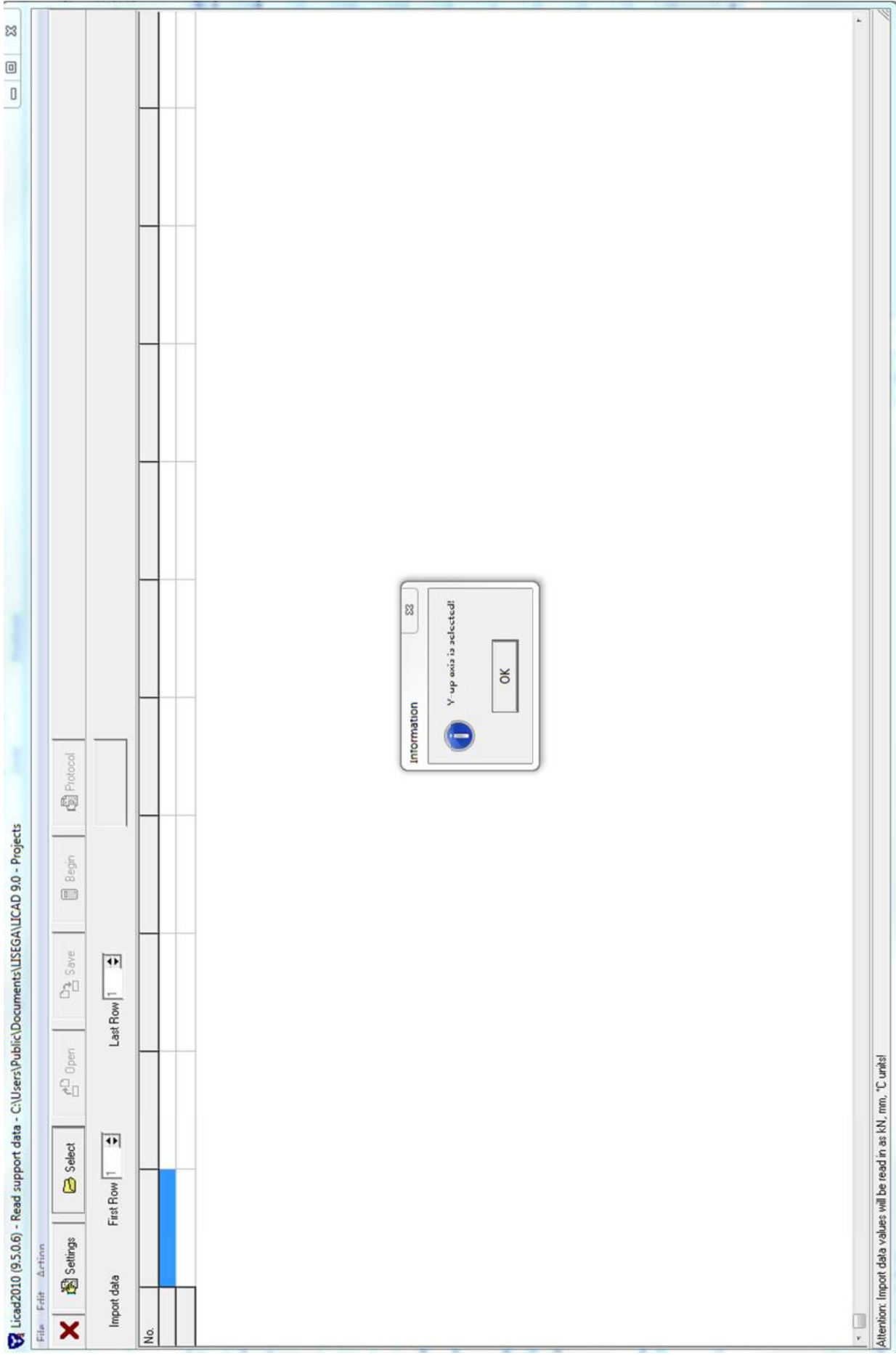
Name: test.mdb  
test.XLS  
testLicad.TXT  
T-ShapeCapacity.xls  
vacation tracker and dashboard.xlsx

File name: test.mdb

File of type: All known import files (\*.xls \*.xlsx \*.lsp \*.mdb)

Open Cancel





Information  
Y-up axis is selected!  
OK

Attention: Import data values will be read in as kN, mm, °C units!

No.																	