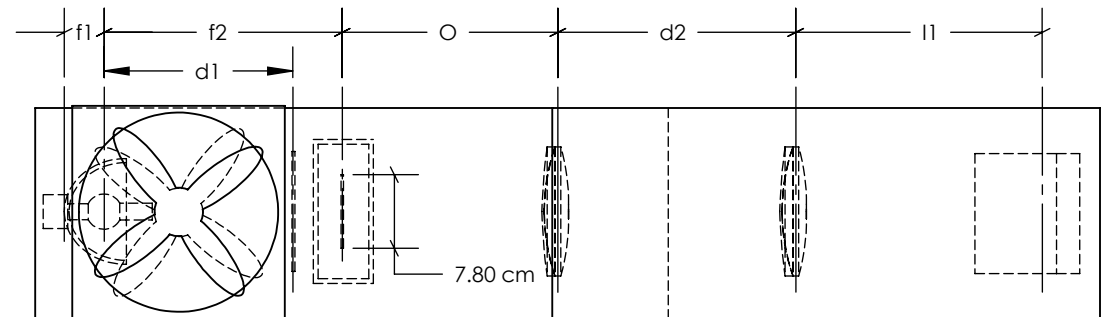


PART LIST

A	Metal halide Lights:SYLVANIA METALARC Britelite 2,000 W or OSRAM HMI_6000 W
B	Cold Ellipsoidal Reflector
C	230mm cooling fan (2) air flow direction, top-bottom
D	Schott KG-5 heat absorbing glass
E	Water Container, 6 1/2" x 6 1/2" x 2 1/2"
F	object, (area of water container to project), 7.8 cm x 7.8 cm x 3.5 cm (depth field).
G	Achromatic projection Lens
H	High-precision aspheric mirror

PROJECTOR VARIABLES

O= To Determine	Lens D= To Determine
I1= To Determine	Reflector f1=28mm
I2= 37'-0.62"	Reflector f2=252mm
F1= I1+I2	d1=7.86"
Fo= To Determine	d2= To Determine
Hi= 3.9cm	Aspherical Mirror curvature= To determine
Ho= 14'-0.36"	
M= x112.5	
Lens f/#= To Determine	



LIGHT SPECIFICATIONS

	SYLVANIA METALARC Britelite	OSRAM HMI_6000
Rated Lamp Wattage:	2,000 W	6,000 W
Rated Lamp Voltage:	115 VAC	123 VAC
Luminous Flux:	200,000 Lumens	600,000 Lumens
Color Temp:	4,000 Kelvin	6,000 Kelvin
Average Life Time:	3,000 H	500 H

	NAME	DATE
DRAWN	FM	3/5/10
CHECKED		
ENG APPR.		
MFG APPR.		
Q.A.		
COMMENTS:		

Federico Muelas INC		
315 W 39 th st #1604, New York, NY 10018		
PROJECT TITLE:		
Blue Flower/Flor Azul		
Sculpture installation for George Pearl Hall Building, UNM, Albuquerque.		
SIZE	DWG. NO.	REV.
A	S1	
SCALE varies	WEIGHT:	SHEET 1 OF 1