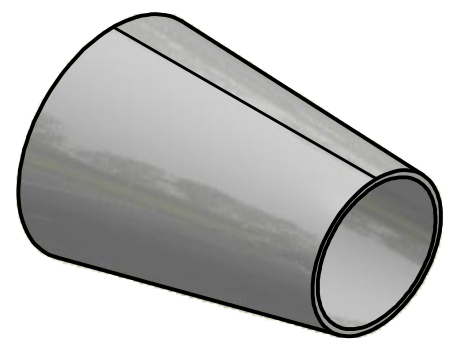
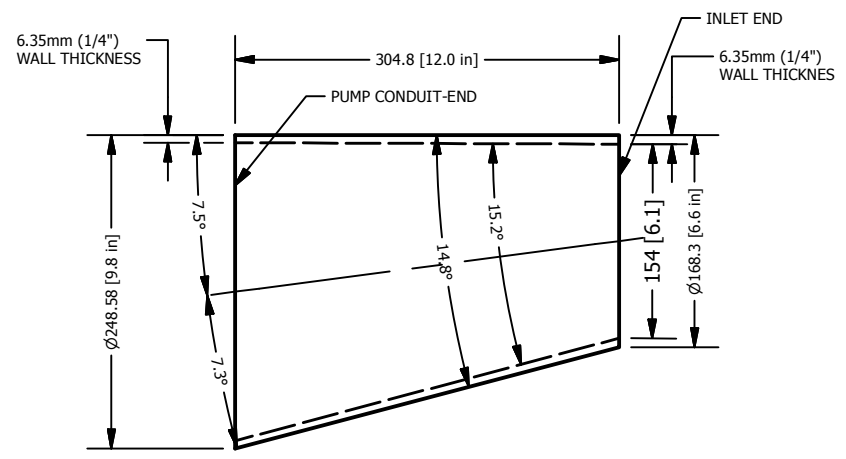
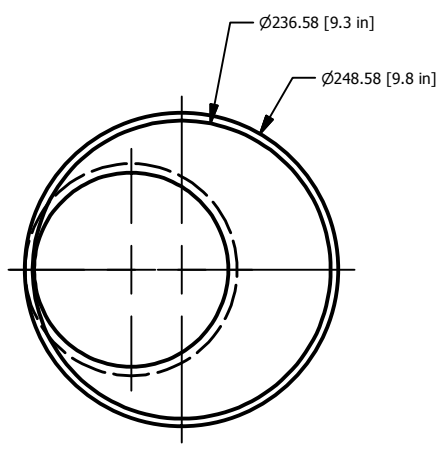


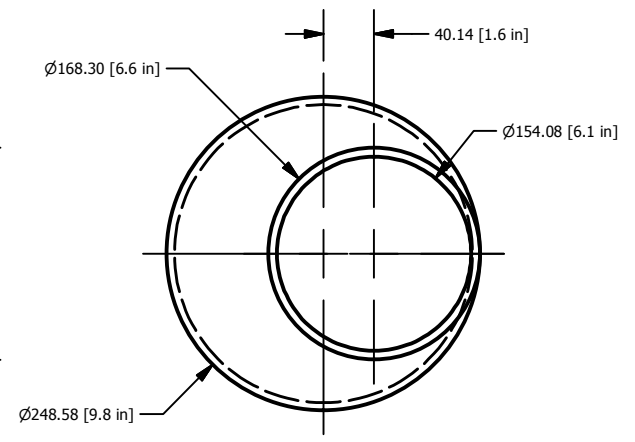
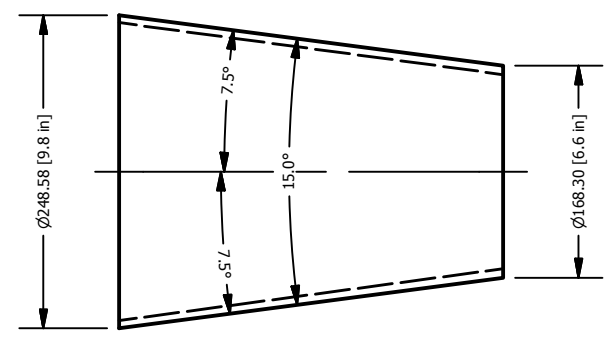
REVISION HISTORY				
REV	ECO	DESCRIPTION	DATE	BY
	N/A	N/A	N/A	N/A



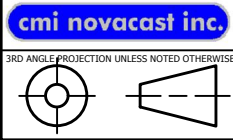
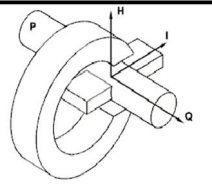
CENTER MARKS ARE FOR THE OD OF BOTH ENDS



CENTER MARKS ARE FOR THE ID OF BOTH ENDS



DRAWING: \\CMI-DC\Data\CAD\INVENTOR\PUMPS\SODIUM PUMPS\LA700 Pump\CM11171 INLET TRANSITION CONE LA700.idw



UNLESS OTHERWISE SPECIFIED:

TOLERANCES (mm):

X.XX = Mac±0.03/Fab±0.15

X.X = Mac±0.18/Fab±0.3

X = Mac±0.3 /Fab±0.5

∠ ±1.0°

WORKMANSHIP:

HOLES: Ⓢ ⊥ // ±.3

SURFACES: Ⓢ ⊥ // ±.5

DIMENSIONS ARE IN MILLIMETERS
INTERPRET GD&T PER
ASME Y14.5M-1994

MATERIAL	Stainless Steel AISI 316 at 649degC
FINISH	
TREATMENT	
HARDNESS	

INIT	DATE
DRAWN	11/24/2010
LAG	
CHECKED	
MFG	
ENG	

PROPRIETARY AND CONFIDENTIAL			
THE INFORMATION CONTAINED IN THIS DRAWING IS THE SOLE PROPERTY OF CMI NOVACAST INC. ANY REPRODUCTION, WITHOUT THE EXPRESS WRITTEN PERMISSION OF CMI NOVACAST INC., IS PROHIBITED.			
TITLE INLET TRANSITION CONE - LA700			
SIZE	DWG NR	REV	
A	CM11171		
SCALE	MASS	MAT'L VOLUME	SHEET
	10.1 kg	1259981 mm^3	1 OF 1

MODEL: \\CMI-DC\Data\CAD\INVENTOR\PUMPS\SODIUM PUMPS\LA700 Pump\10inchInletTransition eccentric fitting.jpt