

NOTES FOR BILL OF MATERIALS

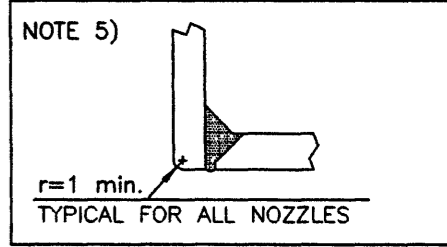
A) QUANTITY SHOWN IN "BILL OF MATERIALS" ARE FOR 1 (ONE) VESSEL.

GENERAL NOTES

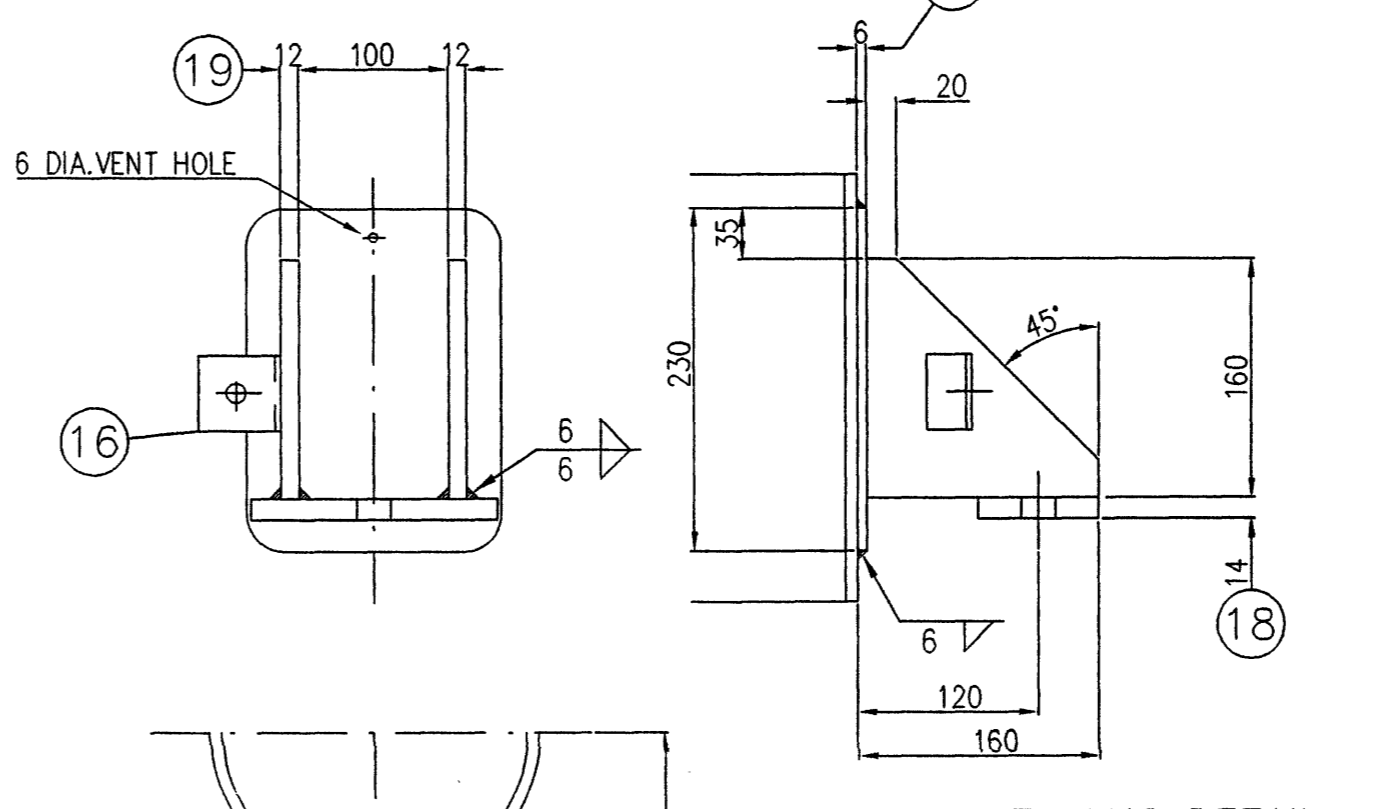
- 1) ALL DIMENSIONS ARE mm UNLESS OTHERWISE STATED.
- 2) FLANGES BOLT HOLES SHALL STRADDLE VESSEL MAIN AXIS.
- 3) DIMENSIONAL TOLERANCES: ±0.5 mm FOR LENGTH AND DISTANCE BETWEEN SUPPORT LUGS AND TANGENT LINE. ±0.3 mm FOR NOZZLES NECK AND ANCHOR BOLTS DISTANCE.
- 4) MATERIALS OF ALL PRESSURE RETAINING PARTS AND PARTS WELDED TO THEM SHALL BE SUPPLIED WITH CERTIFICATE ACCORDING TO EN 10204-3.1.B.
- 5) SEE SKETCH AT SIDE.
- 6) ALL EDGES SHALL BE ROUNDED OFF WITH 1 mm MINIMUM RADIUS UNLESS OTHERWISE STATED.
- 7) VESSEL IMPACT TEST EXEMPTED AS PER ASME Sect.VIII Div.1 UG-20(f).
- 8) BOLTING AND NUTS IMPACT TEST EXEMPTED AS PER ASME Sect.VIII Div.1 UG-66(e).
- 9) WELDING PROCEDURES IMPACT TEST EXEMPTED AS PER ASME Sect.VIII Div.1 UG-20(f).
- 10) NOZZLE FLANGES IN ACCORDANCE WITH ASME B16.5.
- 11) ALL REINFORCING PADS SHALL BE PNEUMATICALLY TESTED WITH 0.5 barg DRY AIR AND SOAP SOLUTION BEFORE THE HYDROSTATIC TEST IS PERFORMED.
- 12) FOR WELDING DATA SEE "WELDING KEY FORM".
- 13) ALL FILLET WELDS NOT DETAILED ON "WELDING KEY FORM" OR DRAWING SHALL HAVE THE WELD LEG EQUAL TO 0.7 TIMES THE MINIMUM THICKNESS TO BE WELDED.
- 14) M.A.W.P. "HOT & CORRODED" COINCIDENT TO DESIGN PRESSURE.
- 15) LOADINGS CONSIDERATIONS ACCORDING TO ASME Sect.VIII Div.1 UG-22:
 - (a) Design Pressure
 - (b) Weight of the vessel and its content
 - (c) Wind, Snow, Earthquake
- 16) WALL TEMPERATURE IN ACCORDANCE WITH ASME Sect.VIII Div.1 UG-99 (h).
- 17) RELIEF VALVES INSTALLED ON PIPING OUTSIDE NOZZLES.

SPECIAL NOTES

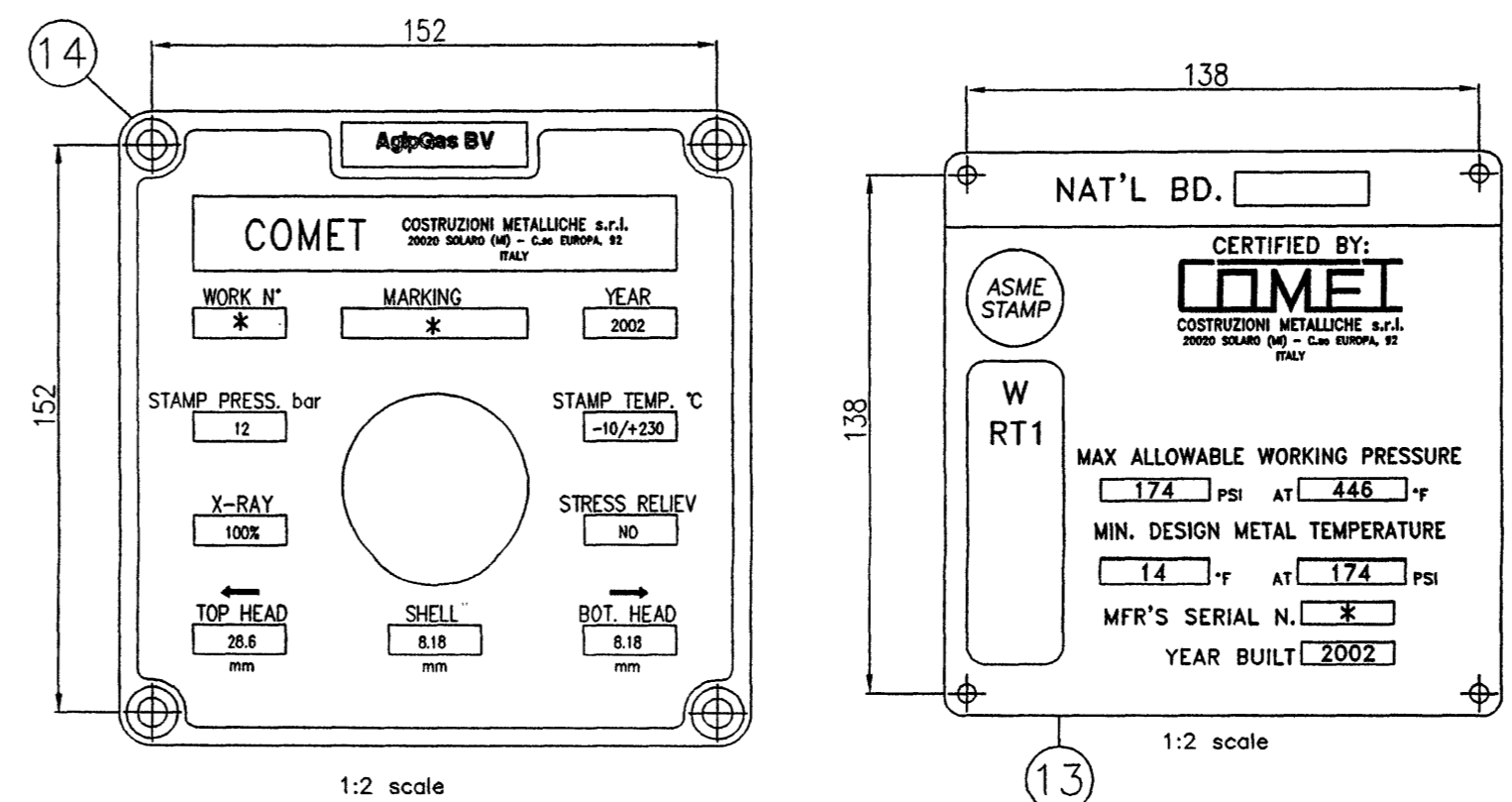
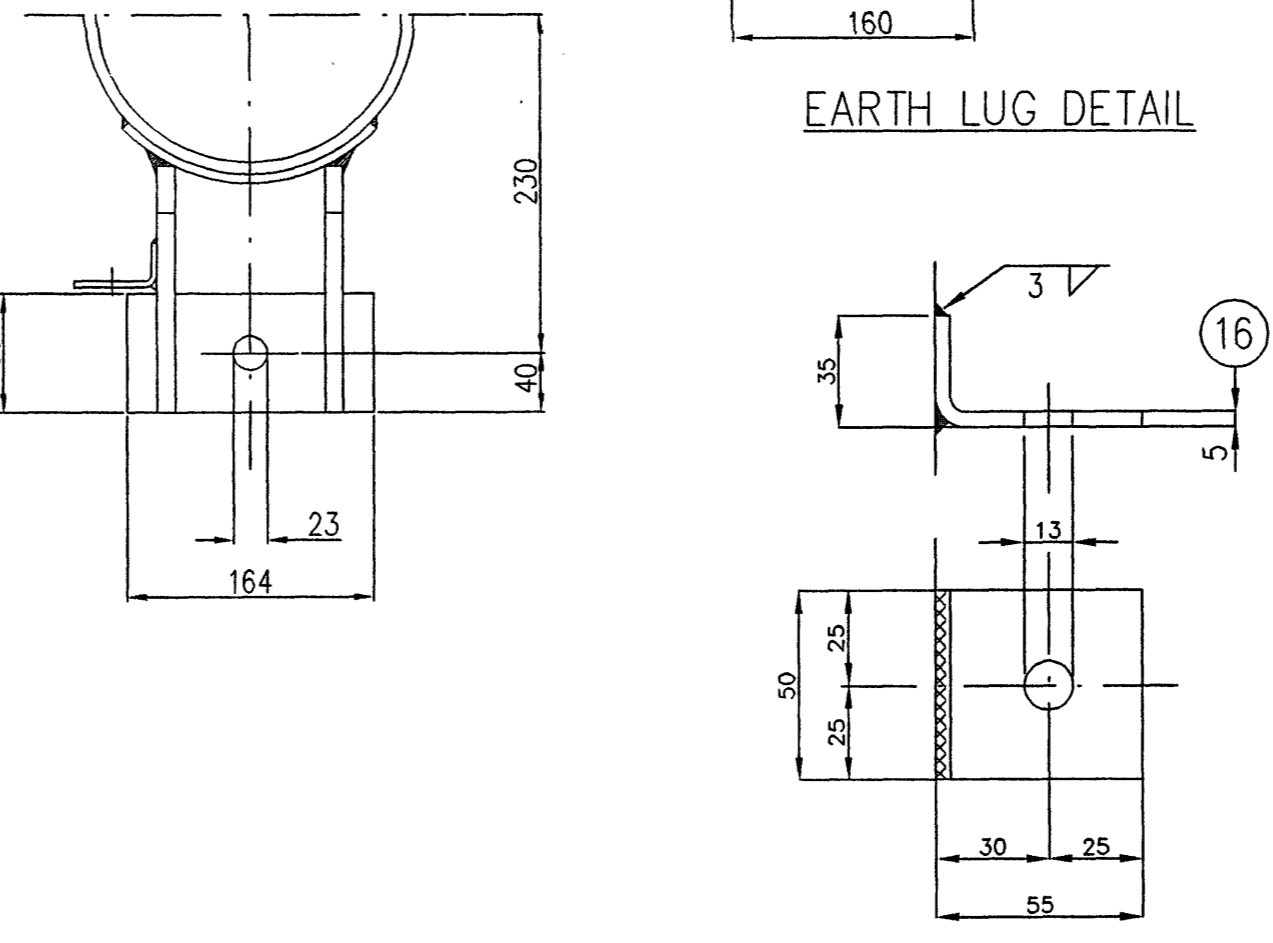
- A1) FLANGES CONTACT FACE FINISHING: "SMOOTH FINISH" 125+250 AARH ACCORDING TO ASME B46.1.
- A2) INTERNAL SURFACE FINISHING: CLEANED AND DRIED
- A3) EXTERNAL SURFACE FINISHING: RAW CONDITION
- A4) ONLY CLEAN POTABLE WATER WITH CHLORIDE CONTENT LESS THAN 50 ppm SHALL BE USED FOR HYDROSTATIC TEST.



SUPPORT BRACKETS



EARTH LUG DETAIL



* FOR ITEM (MARKING): 10-600-HN-011A SERIAL (WORK) N° C02132-C1
 * FOR ITEM (MARKING): 10-600-HN-011B SERIAL (WORK) N° C02132-C2

LIST OF CONNECTIONS						
MARK	No.	SERVICE	ND	#	FLANGE	NOZZLE
S1	1	INLET	6"	150	WN-RF	168.3 OD - 7.1 thk.
S2	1	OUTLET	6"	150	WN-RF	168.3 OD - 7.1 thk.
S3	1	VENT	1"	3000	ASME B1.20.1	COUPLING
S4	1	DRAIN	1"	3000	ASME B1.20.1	COUPLING

BILL OF MATERIALS									
ITEM	DESCRIPTION	QUANT.	MATERIAL	NOTE					
25									
24									
23									
22									
21	INSULATION SUPPORT	2	SA 36						
20	GUSSET	6	SA 516 Gr.60						
19	RIB	4	SA 283 Gr.C						
18	BASE	2	SA 516 Gr.60						
17	REINFORCING	2	SA 516 Gr.60						
16	EARTH LUG	2	S.S. 316						
15	NAME PLATE SUPPORT	1	SA 516 Gr.60						
14	NAME PLATE	1	S.S. 304						
13	NAME PLATE	1	S.S. 304						
12	PLUG	2	SA 105						
11	COUPLING	2	SA 105						
10	NOZZLE	2	SA 106 Gr.B						
9	FLANGE	2	SA 105						
8	NUT	16	SA 194 Gr.2H						
7	STUD	8	SA 193 Gr.B7						
6	GASKET	1	ASBESTOS-FREE						
5	BLIND FLANGE	1	SA 105						
4	FLANGE	1	SA 105						
3	TEE	2	SA 234 Gr.WPB						
2	CAP	1	SA 234 Gr.WPB						
1	SHELL	1	SA 106 Gr.B						

REGENERATION GAS HEATER - CONSTRUCTION DRAWING