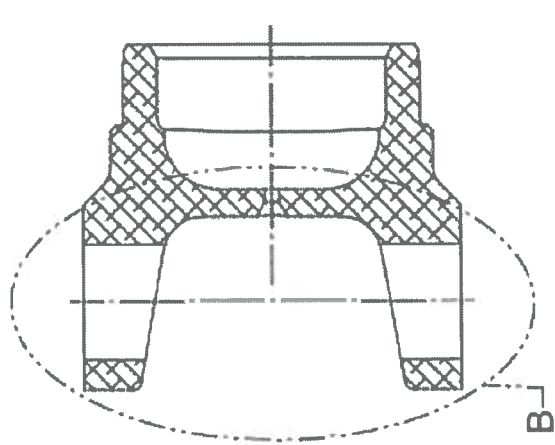


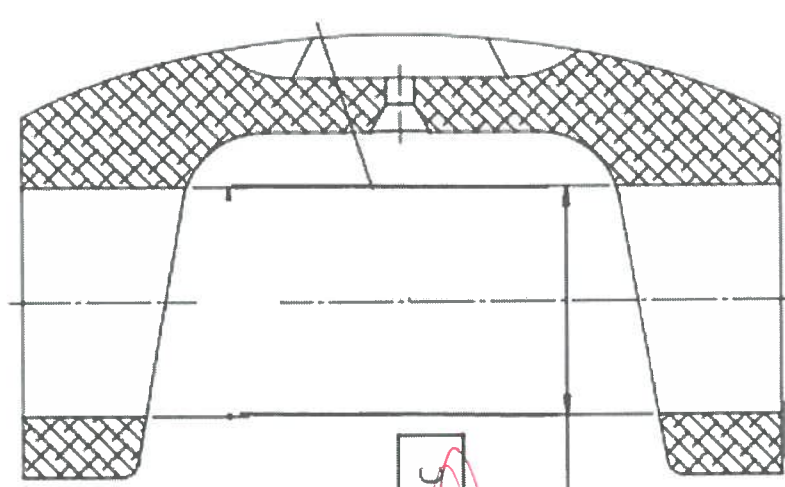
$\phi .008$ tolerance zone
 can move as indicated
 inside the larger T.Z.
 ($\pm .004$ in y-direction)

$\phi .030$ Tolerance Zone
 ($\pm .015$ in x-direction)

True Position



SECTION A-A



DETAIL B
 SCALE 2:1

$\phi 0.015$	A	B	C
$\phi 0.004$	A	B	

$\phi 1.061 \pm .027$
 (CF)

$\phi 0.030$	B	A	E
$\phi 0.008$	B	A	

