

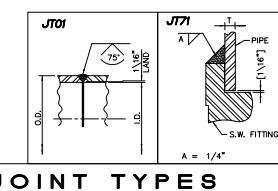
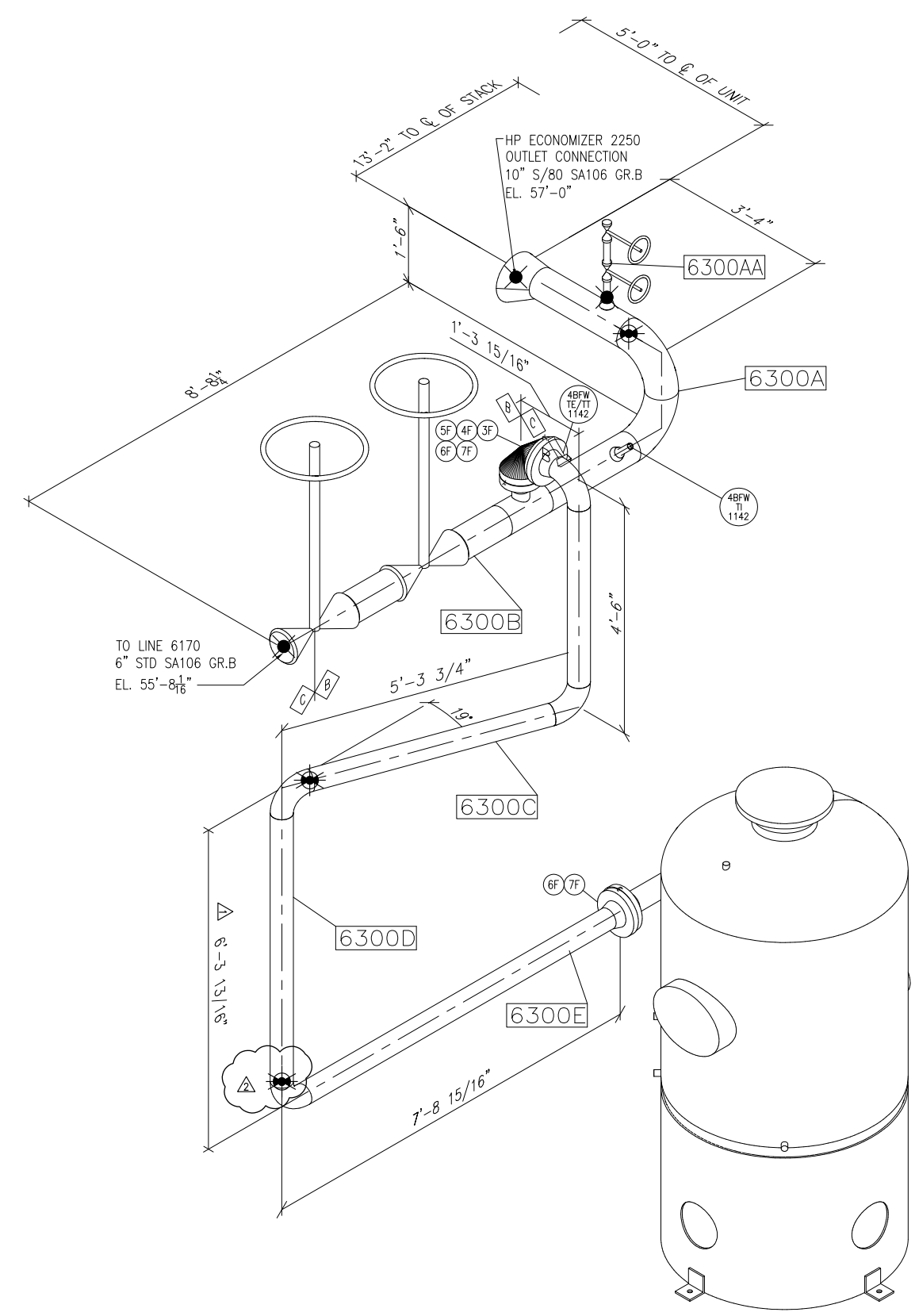
BILL OF MATERIAL									
SUPPLIED BY	MARK	QTY	TAG	SIZE	DESCRIPTION	LENGTH (IN)	WEIGHT (LB)	REV	
EIT	3F	8		3/4"	STUD BOLT: (600# FLG.) w/(2)HN EA, (SA193-B7/SA194-2H)	5 1/2	8.80	0	
EIT	4F	1		3"	GASKET: 1/8" THK-600# FLEXITALLIC STYLE CG W/316 SS RINGS (FLEXICARB)		1.00	0	
EIT	5F	1	SRV-703	3"x4"	STEAM SAFETY VALVE, RF, 600LB X 150 LB FLG		120.00	0	
EIT	6F	16		5/8"	STUD BOLT: (150# FLG.) w/(2)HN EA, (SA193-B7/SA194-2H)	4	10.00	0	
EIT	7F	2		4"	GASKET: -150# FLEXITALLIC STYLE CGI W/CS RING (FLEXITE SUPER)		1.00	0	
TOTAL WEIGHT THIS BILL OF MATERIAL -->							129.8		

PURCHASING NOTE
MATERIAL SHOWN IS FOR ONE UNIT ONLY.
1 UNITS TOTAL REQUIRED.

ASSEMBLIES REQUIRED							
MARK NO	QUANTITY	FIELD/SHOP FABRICATION	DESCRIPTION	SHIPPING INFORMATION			
				LENGTH	WIDTH	DEPTH	WEIGHT EA. (5% ADDED)
6300-A	(ONE)	SHOP	PIPE SPOOL	3'-0"	10"	10"	97
6300-B	(ONE)	SHOP	PIPE SPOOL	1'-0"	1'-0"	9'-0"	1043
6300-C	(ONE)	SHOP	PIPE SPOOL	5'-0"	1'-0"	1'-0"	137
6300-D	(ONE)	SHOP	PIPE SPOOL	6'-9"	1'-0"	1'-0"	78
6300-E	(ONE)	SHOP	PIPE SPOOL	8'-0"	1'-0"	1'-0"	115
6300-AA	(ONE)	SHOP	PIPE SPOOL	1'-6"	1'-6"	6"	21

SYSTEM SHOP WELD COUNT				
QUANTITY	TYPE	SIZE	SCHEDULE	PIPE MATERIAL
8	JT01	6"	SCH 80	SA106 GR.B
1	JT01	3"	SCH 80	SA106 GR.B
3	JT27	1"	SCH 80	SA106 GR.B
5	JT71	1"	SCH 80	SA106 GR.B

SYSTEM FIELD WELD COUNT				
QUANTITY	TYPE	SIZE	SCHEDULE	PIPE MATERIAL
1	JT01	10"	SCH 80	SA106 GR.B
2	JT01	6"	SCH 80	SA106 GR.B
1	JT71	1"	SCH 80	SA106 GR.B



NO	DATE	BY	CHK'D	APP'D	DESCRIPTION	DWG NO	DESCRIPTION
2	09-03-09	BJP	BZM	dlm	REVISED FIELD FIT-UP; ADDED CENTER LINES		
1	08-04-09	DLM	BJP	BC	REVISED DIMENSION (WAS 6'-9 13/16")	2251	UPPER HEADER DETAILS
0	7/29/09	CGS	BJP	BC	ISSUED FOR CONSTRUCTION	0026	PIPING & INSTRUMENT DIAGRAM

Project and Contract Identification
Supplier: Express Integrated Technologies
Project Name: TECO
Project Number: 48751
Generator: Heat Recovery Steam
Contract No.: CHP1-1210
Spec. Sect. No.: Art. No.
Supplier's Approval: Submittal of this document shall represent Supplier's approval as specified in the Contract Documents. Supplier shall be held for accuracy of Submittal as provided in the Contract Documents.

Date Purchaser Received: 9/4/09

Purchaser's Action
(See Contract Documents)
A. CSH 9/4/09 E. is Date
B. F.
C. G.

DESIGN DATA		
	B	C
APPLICABLE CODE:	ASME B31.1a	ASME B31.1a
CODE EDITION / ADDENDA:	2007 / 2008	2007 / 2008
STAMPING REQUIRED (YES / NO):	YES	NO
DESIGN CONDITIONS:		
MAMP	750 PSIG	N/A PSIG
DESIGN PRESSURE	790 PSIG	180 PSIG
DESIGN TEMPERATURE	550 F	550 F
CORROSION ALLOWANCE	0.0625 INCHES	0.0625 INCHES
MDMT	N/A F	N/A F
PWHT / NDE REQUIREMENTS:		
PWHT	TABLE 132	TABLE 132
NDE	TABLE 136.4	TABLE 136.4
SERVICE	WATER	WATER
CONTACT WITH FURNACE GASES	NO	NO
SUBJECT TO RADIANT HEAT	NO	NO
FINAL HYDRO-TEST PRESSURE	1125 PSIG	N/A PSIG



THIS DRAWING IS THE PROPERTY OF AND INTENDED ONLY FOR THE PRIVATE USE OF EXPRESS INTEGRATED TECHNOLOGIES L.L.C. AND MAY NOT BE COPIED OR USED IN WHOLE OR IN PART FOR ANY REASON WITHOUT PRIOR WRITTEN CONSENT.

H.P. ECONOMIZER OUTLET 6300
ERECTION DRAWING

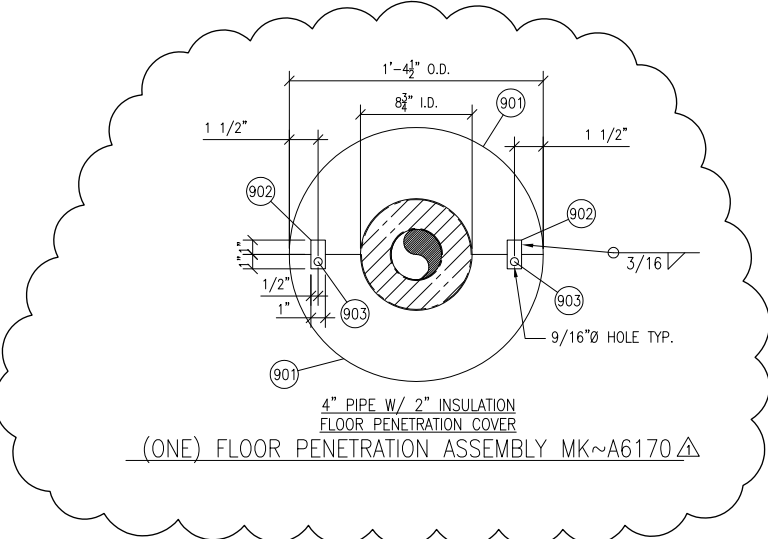
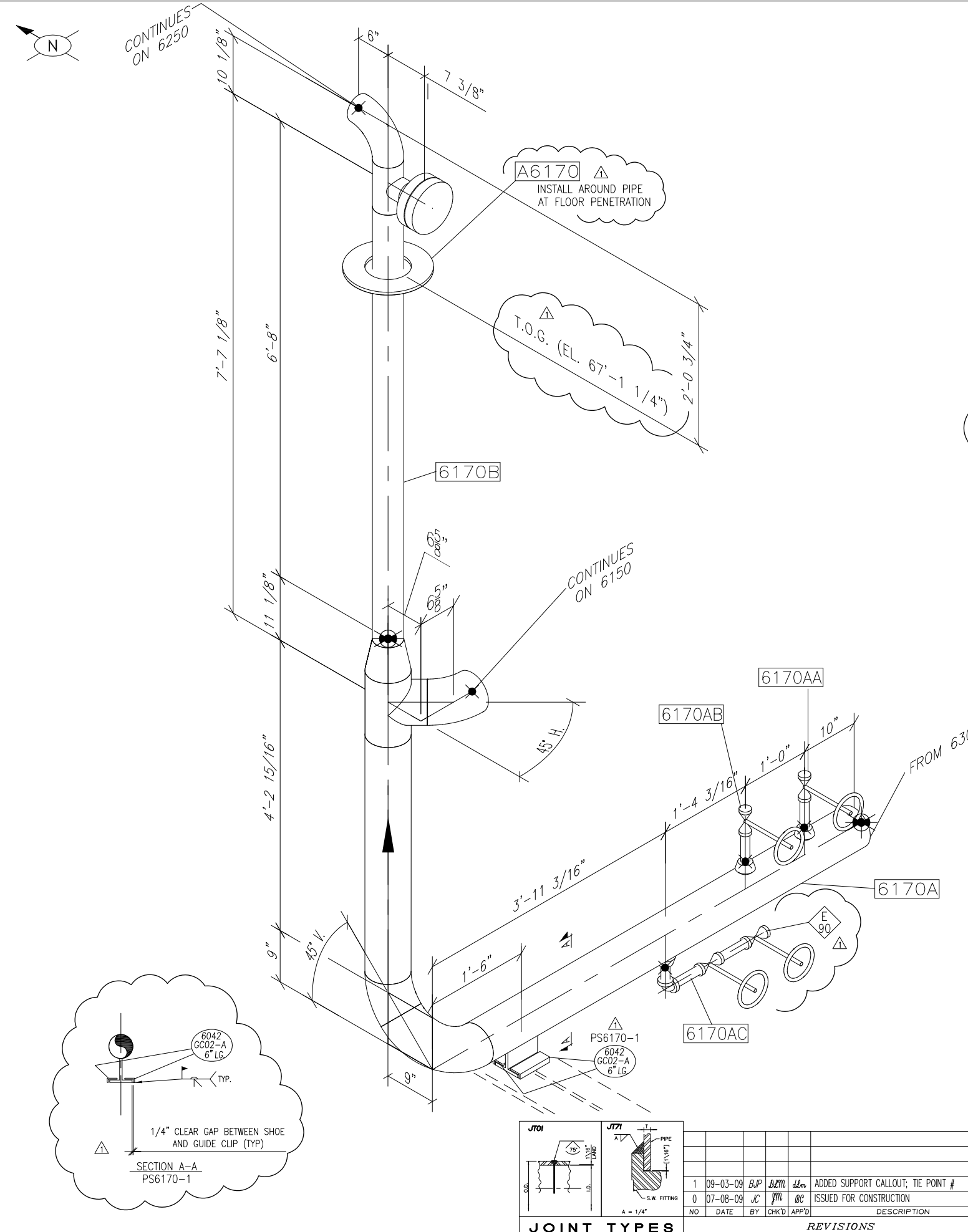
DRAWN	BJP	JOB NO	08036	PC	1	DRAWING NO	6300	REV	2
DATE	6/16/09								
SCALE	NONE								
CHK'D	BZM								
APPRD.	BC								

Drawing File Name: P:\CAD\08036\6000\08036-6300_2.DWG
 Last Plotted: 9/3/09
 By: dmessner

By: dmeasner

Last Plotted: 9/3/09

P:\CAD\08036\6000\08036-6170_1.DWG, 9/3/2009 3:54:17 PM, KIP 2009.pc3



BILL OF MATERIAL								
SUPPLIED BY	MARK	QTY	TAG	SIZE	DESCRIPTION	LENGTH (IN)	WEIGHT (LB)	REV
		(ONE)			FLOOR PENETRATION ASSEMBLY MK~A6170			
FAB	901	1			PLATE: 1/4 X 16 1/2" O.D. x 8 3/4" I.D. [SPLIT, ONE MAKES TWO] (A36)		4.9	0
FAB	902	2			BAR: 1/4 X 1" X 2" (A36)		1	0
FAB	903	2			1/2"Ø G.M.B. w/ H.N. (A325)		1	0
TOTAL WEIGHT THIS BILL OF MATERIAL -->							6.90	

PURCHASING NOTE
MATERIAL SHOWN IS FOR ONE UNIT ONLY.
1 UNITS TOTAL REQUIRED.

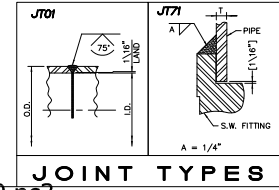
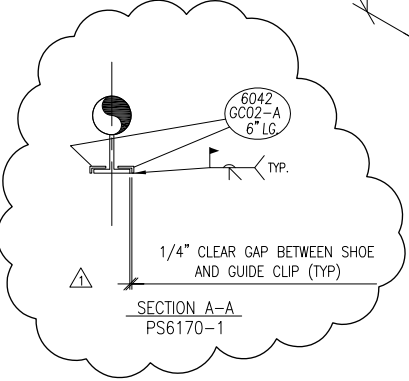
ASSEMBLIES REQUIRED							
MARK NO	QUANTITY	FIELD/SHOP FABRICATION	DESCRIPTION	SHIPPING INFORMATION			
				LENGTH	WIDTH	DEPTH	WEIGHT EA. (5% ADDED)
6170-A	(ONE)	SHOP	PIPE SPOOL	7'-6"	2'-0"	6'-9"	372
6170-B	(ONE)	SHOP	PIPE SPOOL	8'-6"	2'-0"	1'-2"	202
6170-AA	(ONE)	SHOP	PIPE SPOOL	1'-0"	9"	5"	10
6170-AB	(ONE)	SHOP	PIPE SPOOL	1'-0"	9"	5"	10
6170-AC	(ONE)	SHOP	PIPE SPOOL	2'-0"	9"	5"	38
A6170	(ONE)	SHOP	FLOOR PENETRATION	1'-7"	1'-7"	1"	12

SYSTEM SHOP WELD COUNT				
QUANTITY	TYPE	SIZE	SCHEDULE	PIPE MATERIAL
7	JT01	6"	S/STD	SA106 GR.B
1	JT10	6"	S/STD	SA106 GR.B
3	JT01	4"	S/STD	SA106 GR.B
1	JT01	3"	S/STD	SA106 GR.B
3	JT27	1"	S/XH	SA106 GR.B
7	JT71	1"	S/XH	SA106 GR.B

SYSTEM FIELD WELD COUNT				
QUANTITY	TYPE	SIZE	SCHEDULE	PIPE MATERIAL
1	JT01	4"	S/STD	SA106 GR.B
3	JT71	1"	S/XH	SA106 GR.B

DESIGN DATA	
APPLICABLE CODE:	ASME B31.1g
CODE EDITION / ADDENDA:	2007 / 2008
STAMPING REQUIRED (YES / NO):	NO
DESIGN CONDITIONS:	
MAWP	N/A PSIG
DESIGN PRESSURE	790 PSIG
DESIGN TEMPERATURE	400 F
CORROSION ALLOWANCE	0.0625 INCHES
MDMT	N/A F
PWHT / NDE REQUIREMENTS:	
PWHT	TABLE 132
NDE	TABLE 136.4
SERVICE	WATER
CONTACT WITH FURNACE GASES	NO
SUBJECT TO RADIANT HEAT	NO
FINAL HYDRO-TEST PRESSURE	N/A PSIG

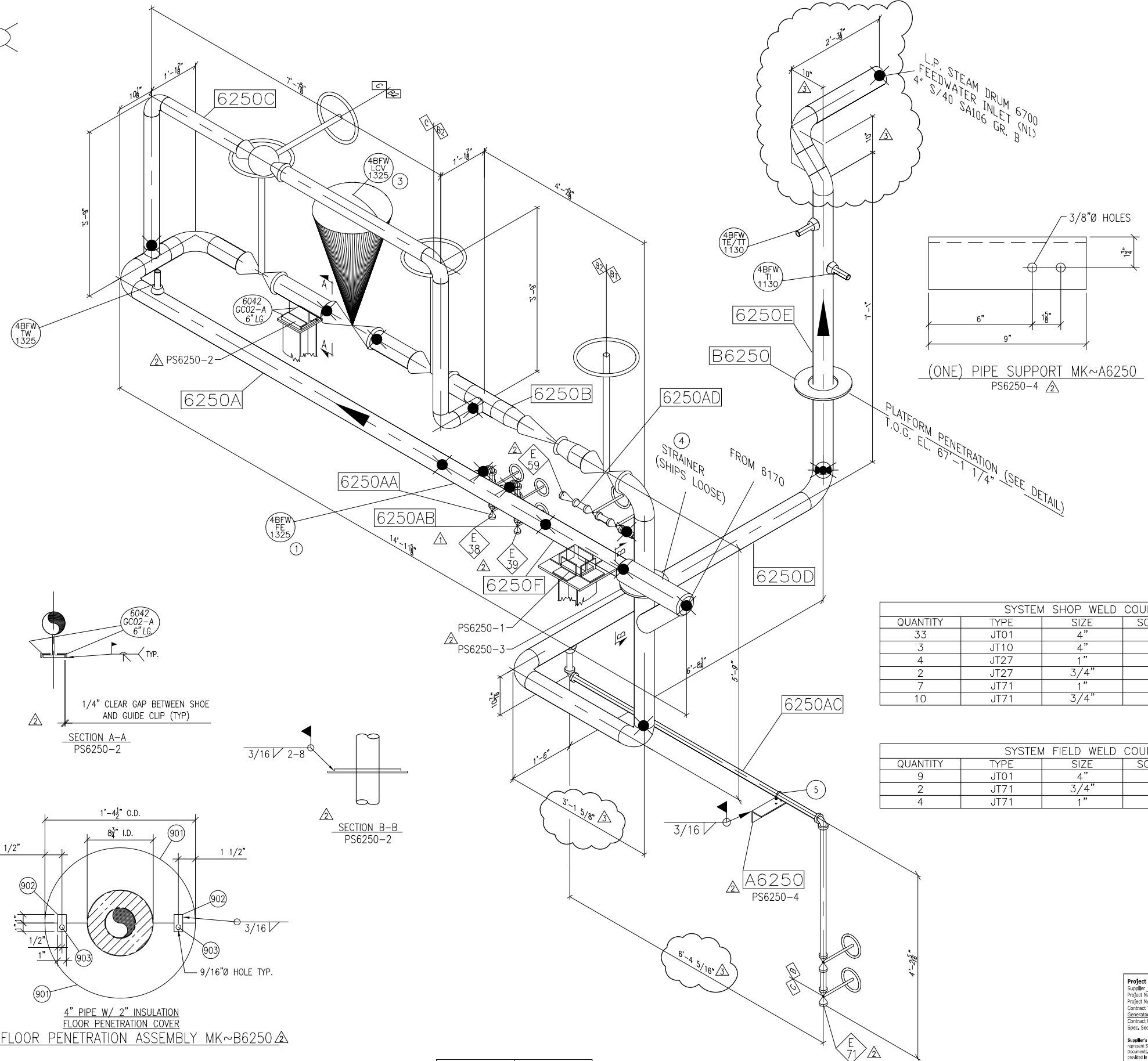
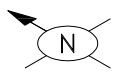
Project and Contract Identification	Date Purchaser Received
Supplier: Express Integrated Technologies	9/4/09
Project Name: TECO	
Project Number: 48751	
Contract Title: Heat Recovery Steam Generator	
Contract No.: CHP-1210	
Spec. Sect. No.:	ATL No.:
Supplier's Approval	Purchaser's Action
(See Contract Documents)	(See Contract Documents)
Valid to Date:	Valid to Date:
A: CSH 9/14/09	E: H&B is Date:
B:	F:
C:	G:
D:	H:
Supplier's Approval: Submittal of this document shall represent Supplier's approval as specified by the Contract Documents. Supplier remains liable for accuracy of Submittals as provided in the Contract Documents.	



NO	DATE	BY	CHK'D	APP'D	DESCRIPTION	DWG NO	DESCRIPTION
1	09-03-09	BJP	BZM	dzm	ADDED SUPPORT CALLOUT; TIE POINT #	6000	PIPING GA
0	07-08-09	JC	JM	BC	ISSUED FOR CONSTRUCTION	0023, 0025, 0026	P&ID



DRAWN	JC	DATE	5/26/09	SCALE	NONE	CHK'D	JM	APP	BC
THIS DRAWING IS THE PROPERTY OF AND INTENDED ONLY FOR THE PRIVATE USE OF EXPRESS INTEGRATED TECHNOLOGIES L.L.C. AND MAY NOT BE COPIED OR USED IN WHOLE OR IN PART FOR ANY REASON WITHOUT PRIOR WRITTEN CONSENT.									
BOILER FEEDWATER DISTRIBUTION HEADER ERECTION DRAWING									
JOB NO	08036	PC	1	DRAWING NO	6170	REV	1		



FIELD MATERIAL										
SUPPLIED BY	MARK	QTY	TAG	SIZE	DESCRIPTION	LENGTH (IN)	WEIGHT (LB)	REV		
EIT	1	1	4BFW-FE-1325	4"	FLOW ELEMENT, (SA106 GR.B)		100.00	0		
EIT	3	1	4BFW-LCV-1325	4"	CONTROL VALVE, 600# BW (SA234-WPB)		100.00	0		
EIT	4	1	4BFW-STR-721	4"	STRAINER, 600#, (SA105) BW S/STD	17 15/16"	160.00	0		
EIT	5	1		1"	U-BOLT: PHS FIG. NO. 120 (GALV) W/ 4 NUTS		1.0	0		
TOTAL WEIGHT THIS BILL OF MATERIAL							-->	361.00		

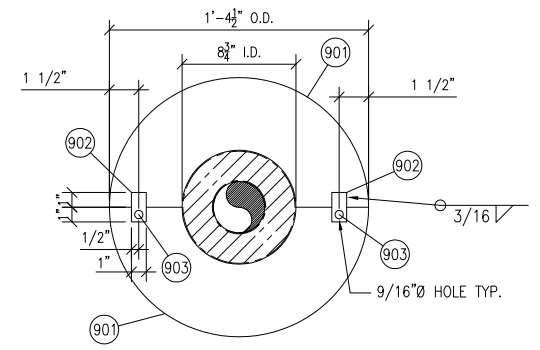
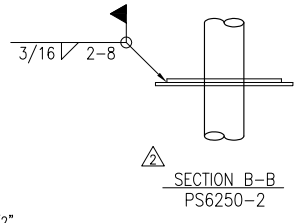
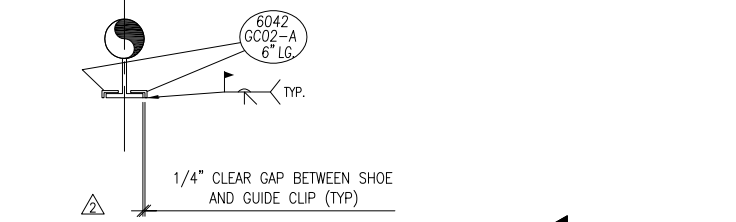
BILL OF MATERIAL										
SUPPLIED BY	MARK	QTY	TAG	SIZE	DESCRIPTION	LENGTH (IN)	WEIGHT (LB)	REV		
		(ONE)			PIPE SUPPORT MK~A6250	0				
FAB	904	1			L 3 X 3 X 1/4	9	3.00	0		
		(ONE)			FLOOR PENETRATION ASSEMBLY MK~B6250					
FAB	901	1			PLATE: 1/4 X 16 1/2" O.D. x 8 3/4" I.D. [SPLIT, ONE MAKES TWO] (A36)		4.9	0		
FAB	902	2			BAR: 1/4 X 1" X 2" (A36)		1	0		
FAB	903	2			1/2"Ø G.M.B. w/ H.N. (A325)		1	0		
TOTAL WEIGHT THIS BILL OF MATERIAL							-->	9.90		

PURCHASING NOTE
MATERIAL SHOWN IS FOR ONE UNIT ONLY.
1 UNITS TOTAL REQUIRED.

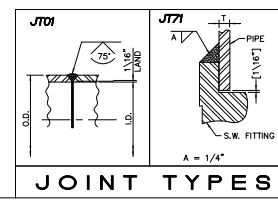
ASSEMBLIES REQUIRED							
MARK NO	QUANTITY	FIELD/SHOP FABRICATION	DESCRIPTION	SHIPPING INFORMATION			
				LENGTH	WIDTH	DEPTH	WEIGHT EA. (5% ADDED)
6250-A	(ONE)	SHOP	PIPE SPOOL	13'-3"	3'-3"	1'-4"	302
6250-B	(ONE)	SHOP	PIPE SPOOL	12'-1"	5'-1"	1'-2"	435
6250-C	(ONE)	SHOP	PIPE SPOOL	8'-3"	1'-3"	3'-9"	341
6250-D	(ONE)	SHOP	PIPE SPOOL	8'-10"	4'-2"	1'-0"	139
6250-E	(ONE)	SHOP	PIPE SPOOL	7'-9"	2'-2"	1'-6"	106
6250-F	(ONE)	SHOP	PIPE SPOOL	3'-0"	1'-0"	6"	40
6250-AA	(ONE)	SHOP	PIPE SPOOL	1'-6"	8"	6"	12
6250-AB	(ONE)	SHOP	PIPE SPOOL	1'-6"	8"	6"	12
6250-AC	(ONE)	SHOP	PIPE SPOOL	7'-3"	5'-0"	6"	63
6250-AD	(ONE)	SHOP	PIPE SPOOL	2'-0"	1'-0"	6"	30
A6250	(ONE)	SHOP	PIPE SUPPORT FLOOR PENETRATION	1'-0"	3"	3"	3
B6250	(ONE)	SHOP	FLOOR PENETRATION	1'-7"	1'-7"	1"	12

SYSTEM SHOP WELD COUNT					
QUANTITY	TYPE	SIZE	SCHEDULE	PIPE MATERIAL	
33	JT01	4"	S/40	SA106 GR.B	
3	JT10	4"	S/40	SA106 GR.B	
4	JT27	1"	S/XH	SA106 GR.B	
2	JT27	3/4"	S/XH	SA106 GR.B	
7	JT71	1"	S/XH	SA106 GR.B	
10	JT71	3/4"	S/XH	SA106 GR.B	

SYSTEM FIELD WELD COUNT					
QUANTITY	TYPE	SIZE	SCHEDULE	PIPE MATERIAL	
9	JT01	4"	S/40	SA106 GR.B	
2	JT71	3/4"	S/XH	SA106 GR.B	
4	JT71	1"	S/XH	SA106 GR.B	



(ONE) FLOOR PENETRATION ASSEMBLY MK~B6250



NO	DATE	BY	CHK'D	APP'D	DESCRIPTION	DWG NO	DESCRIPTION
3	09-08-09	DLM	ELM		REV DIMENSIONS FOR SPOOLS D,E & AC		
2	09-03-09	ELP	ELM		REVISED PIPE SUPPORT CALLOUTS; TIE POINT #S	6000	PIPING GENERAL ARRANGEMENT
1	7/15/09	ELP	ELM		REVISED FOR FLOW ELEMENT	6700	LP DRUM
0	07-08-09	JC	OC		ISSUED FOR CONSTRUCTION	0024, 0025	P&ID

NO	DATE	BY	CHK'D	APP'D	DESCRIPTION	DWG NO	DESCRIPTION
3	09-08-09	DLM	ELM		REV DIMENSIONS FOR SPOOLS D,E & AC		
2	09-03-09	ELP	ELM		REVISED PIPE SUPPORT CALLOUTS; TIE POINT #S	6000	PIPING GENERAL ARRANGEMENT
1	7/15/09	ELP	ELM		REVISED FOR FLOW ELEMENT	6700	LP DRUM
0	07-08-09	JC	OC		ISSUED FOR CONSTRUCTION	0024, 0025	P&ID

Project and Contract Identification
 Supplier: Express Integrated Technologies
 Project Name: TCCO
 Project Number: 40751
 Contract Title: Heat Recovery Steam Generator
 Contract No.: CHP1-1210
 Spec. Sect. No.:
 Art. No.:
 Date Purchaser Received: 9/11/09
 Purchaser's Action (See Contract Documents):
 Date: 9/21/09
 Supplier's Approval: Submittal of this document shall represent Supplier's approval as specified in the Contract Documents. Supplier remains liable for accuracy of Submittal as provided in the Contract Documents.

DESIGN DATA		B	B2	C
APPLICABLE CODE:	ASME B31.1g	ASME B31.1g	ASME B31.1g	ASME B31.1g
CODE EDITION / ADDENDA:	2007 / 2008	2007 / 2008	2007 / 2008	2007 / 2008
STAMPING REQUIRED (YES / NO):	YES	YES	YES	NO
DESIGN CONDITIONS:				
MAMP	340 PSIG	340 PSIG	N/A PSIG	N/A PSIG
DESIGN PRESSURE	425 PSIG	790 PSIG	790 PSIG	790 PSIG
DESIGN TEMPERATURE	450 F	450 F	450 F	450 F
CORROSION ALLOWANCE	0.0625 INCHES	0.0625 INCHES	0.0625 INCHES	0.0625 INCHES
MDMT	N/A F	N/A F	N/A F	N/A F
PWHT / NDE REQUIREMENTS:				
PWHT	TABLE 132	TABLE 132	TABLE 132	TABLE 132
NDE	TABLE 136.4	TABLE 136.4	TABLE 136.4	TABLE 136.4
SERVICE	WATER	WATER	WATER	WATER
CONTACT WITH FURNACE GASES	NO	NO	NO	NO
SUBJECT TO RADIANT HEAT	NO	NO	NO	NO
FINAL HYDRO-TEST PRESSURE	510 PSIG	510 PSIG	N/A PSIG	N/A PSIG



DATE	SCALE	CHK'D	ADD	DRAWN	THIS DRAWING IS THE PROPERTY OF AND INTENDED ONLY FOR THE PRIVATE USE OF EXPRESS INTEGRATED TECHNOLOGIES L.L.C. AND MAY NOT BE COPIED OR USED IN WHOLE OR IN PART FOR ANY REASON WITHOUT PRIOR WRITTEN CONSENT.	BOILER FEEDWATER FROM LINE 6170 TO L.P. STEAM DRUM ERECTION DRAWING	JOB NO	PC	DRAWING NO	REV
5/26/09	NONE	JC	OC	JC			08036	1	6250	3