

This is currently an illegal Composite callout - datums must repeat in upper and lower

Change to 2X

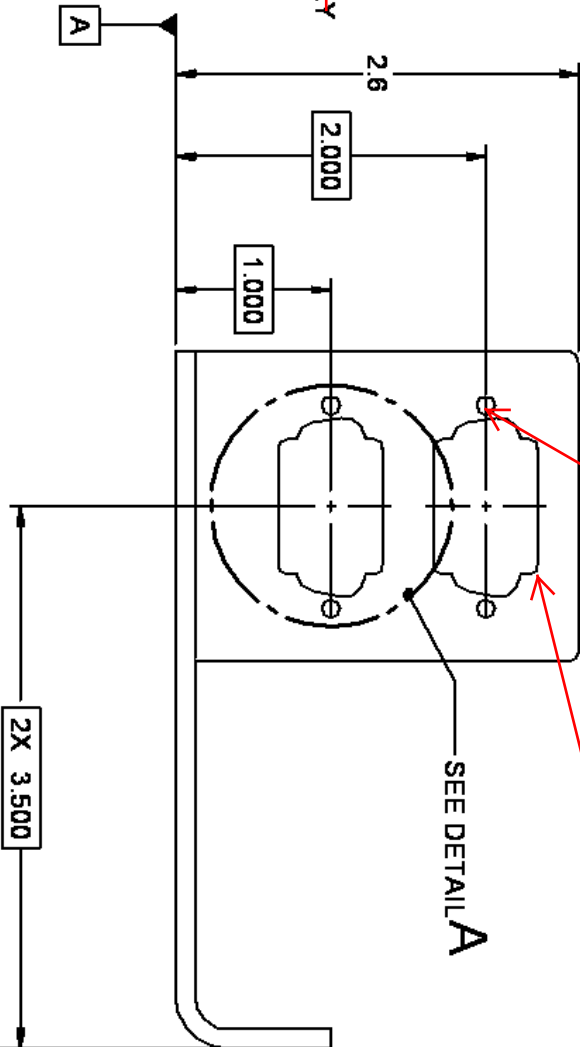
Change to wrt C/A only if you truly need the orientation refined to A, otherwise drop it

~~4X~~

|             |             |             |   |   |   |   |
|-------------|-------------|-------------|---|---|---|---|
| $\phi .120$ | $\phi .050$ | $\phi .005$ | M | C | A | B |
|             |             |             |   |   |   |   |

Add 2X single segment Position @MMC wrt C/D

Place Profile of Surface wrt C/D



# DETAIL A

2X - BASIC Dims ONLY