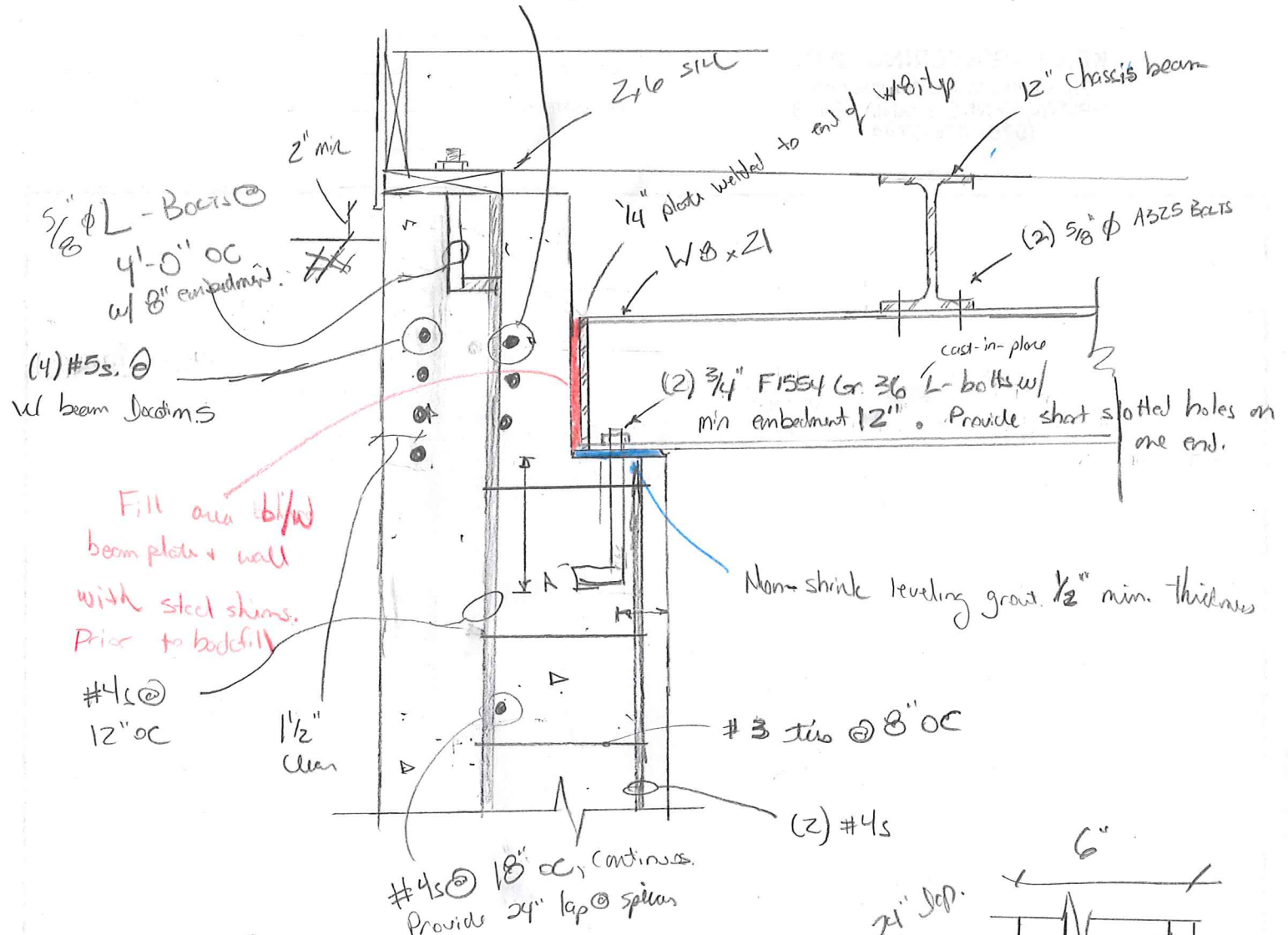


(3) #5s continuous. Provide 24" lap @ splice



5/16" ϕ L-Bolts @ 4'-0" OC w/ 8" embedment.

(4) #5s @ w/ beam section

Fill area b/w beam plate + wall with steel shims. Prior to backfill

#4s @ 12" OC

(2) #4s

#4s @ 18" OC, continuous. Provide 24" lap @ splice

#4s @ 12" OC

