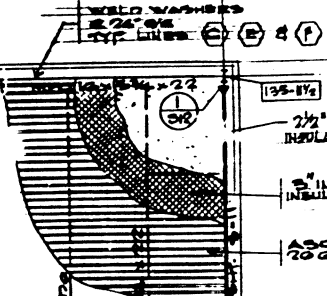
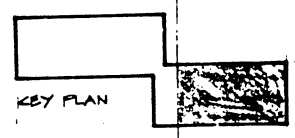


REGISTERED PROFESSIONAL ENGINEER
 L. HOWARD McLESTER & ASSOCIATES
 714 750-0000
 4220 VON KARMAN AVE., STE. 100
 NEWPORT BEACH, CA 92660
 757



14 SIM
 15 SIM
 16 SIM
 17 SIM

BRACING L3 x 5 x 1/2
6 VA PYS TYPICAL
EAST-WEST MOMENT
FRAMES

PC 998-79
 36 & 70



PARTIAL ROOF FRAMING PLAN

| REVISIONS | BY |
|-----------|----|
| 1-2-79 | |
| 7-24-79 | |
| 8-24-79 | |

Lee & Strock Architects
 4220 Von Karman Avenue
 Newport Beach
 California 92660
 714-955-1150

**3 STORY
OFFICE BUILDING**
 NEWPORT BEACH, CA
 IRVINE
 ASSOCIATES

| DATE | SCALE | DRWN | CHK | SHEET |
|---------|--------------|------|-----|-------|
| 8-23-79 | 1/8" = 1'-0" | | | 5-10 |