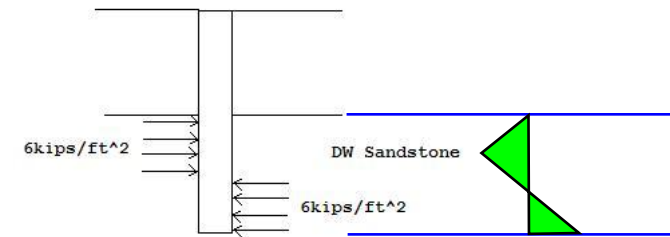
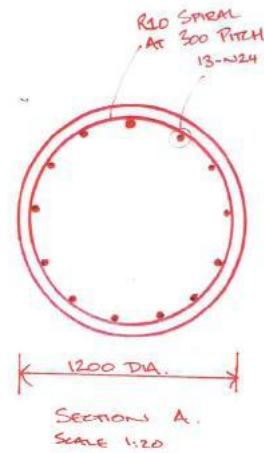


NOTES

- CONCRETE TO HAVE A MAXIMUM AGGREGATE SIZE OF 20mm AND SLUMP OF 90mm.
- CONCRETE STRENGTH TO BE M32
- CONCRETE TO BE MECHANICALLY VIBRATED DURING PLACING.
- CLEAR REINFORCING COVER TO BE 50mm.
- GEOTECHNICAL ENGINEER TO CONFIRM A C_u OF 100kPa FOR DW ROCK ON-SITE.



PRESSURE DIAGRAM