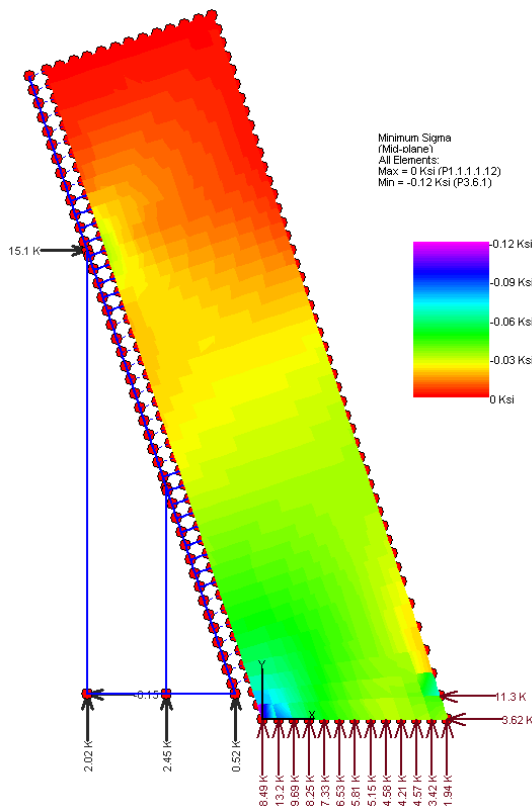


Model Information

- All springs are compression only with infinite stiffness.
 - o With base support as compression only, moment connection is eliminated. Plate element would tip over without blue support frame.
- The plates are 1 Ft wide with material property set as concrete for self weight.
- Short members connecting the frame to the plate nodes are compression only.
 - o No Shear Transfer.
 - o No Tension to secure the frame to the concrete plate element.
- All frame members are set to zero weight to better see the support load path.



Results

- Total self weight of plate element: 88.2 k (per ft)
- 5 k of 88.2 k is supported by the frame.
- maximum compressive stress in concrete is 0.12 ksi
 - o Concrete would need to gain this strength or the side forms will be experiencing full liquid head.