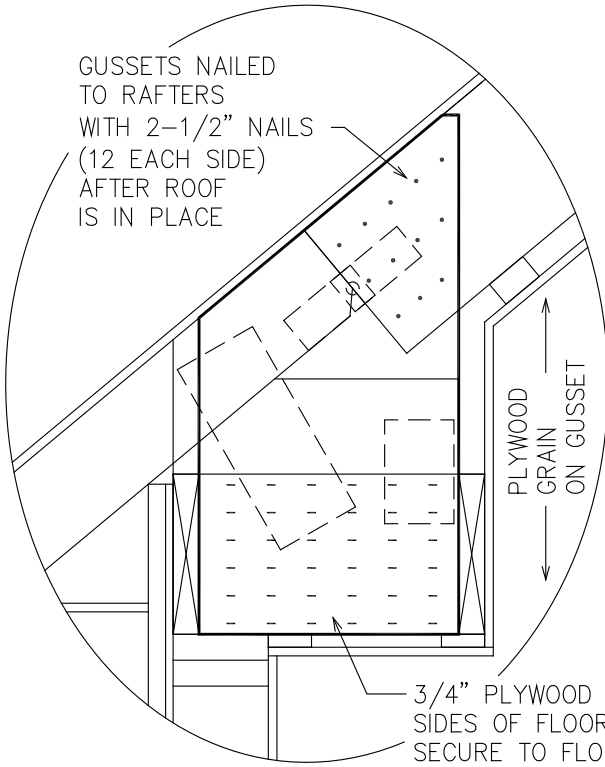


# Previous Design

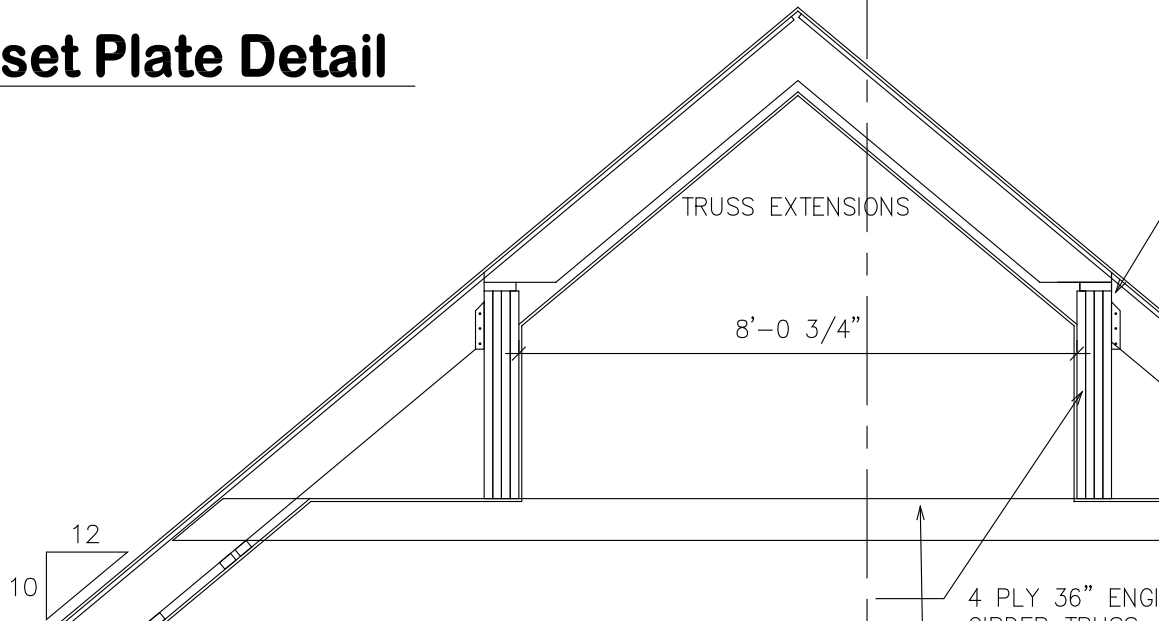


GUSSETS NAILED TO RAFTERS WITH 2-1/2" NAILS (12 EACH SIDE) AFTER ROOF IS IN PLACE

PLYWOOD GRAIN ON GUSSET

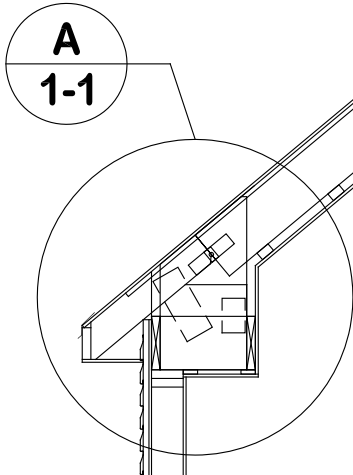
3/4" PLYWOOD GUSSETS BOTH SIDES OF FLOOR JOISTS - SECURE TO FLOOR JOISTS WITH 100% GLUE (LEPAGE'S CONSTRUCTION ADHESIVE) & STAPLED WITH 1/2"x1-1/2" STAPLES (32 EACH SIDE)

## A 1-1 Gusset Plate Detail



TRUSS EXTENSIONS

8'-0 3/4"



A 1-1

4 PLY 36" ENGI GIRDER TRUSS

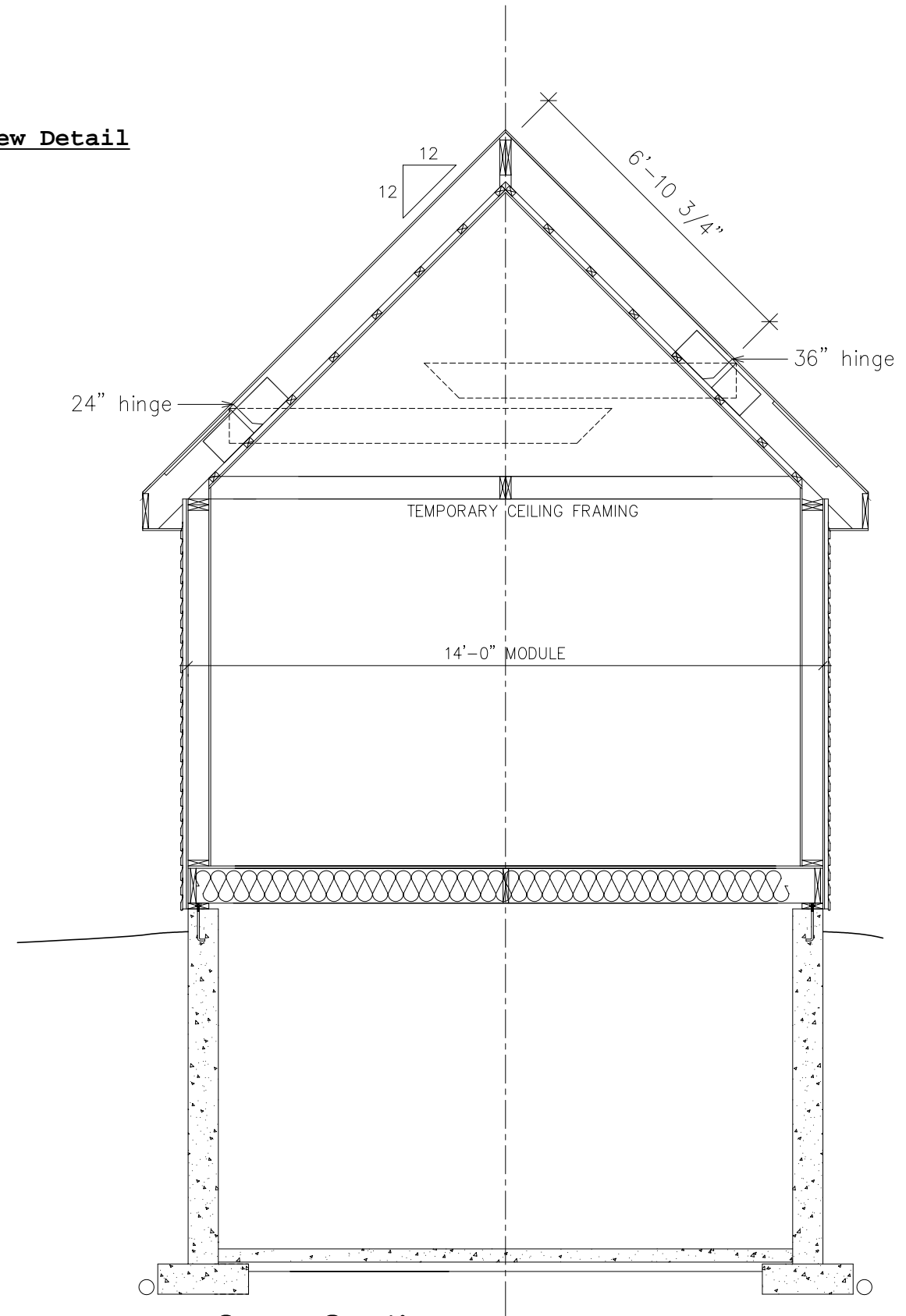
DOUBLE 2x8 #2 @ 48" C/C FASTEN TO RAF

R40 INSUL. BY 6 MIL POLY V.B FURRING AS REC 1/2" DRYWALL

NOTE: ALL FASTENING AS PER ENGINEERING NOTES

16'-0" MODULE

**New Detail**



**Cross Section**