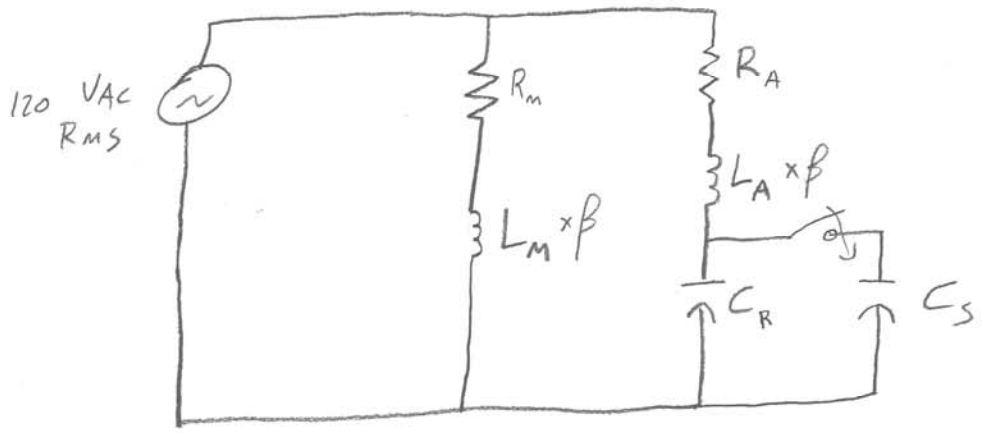


Steinmetz Equivalent Circuit  
(per winding)

Versus

(at start-up and near zero RPM)



- $R_m \triangleq$  Measured resistance of the main (AKA run) windings.
- $L_m \triangleq$  Measured inductance of the main windings, using an LCR meter.
- $R_A \triangleq$  ... resistance of auxiliary (AKA start) windings.
- $L_A \triangleq$  ... inductance of auxiliary windings using LCR meter.
- $C_R \triangleq$  Run capacitor
- $C_S \triangleq$  Start capacitor
- $\beta \triangleq$  Stator Remaining Flux Coefficient  
 $0 \leq \beta \leq 1$