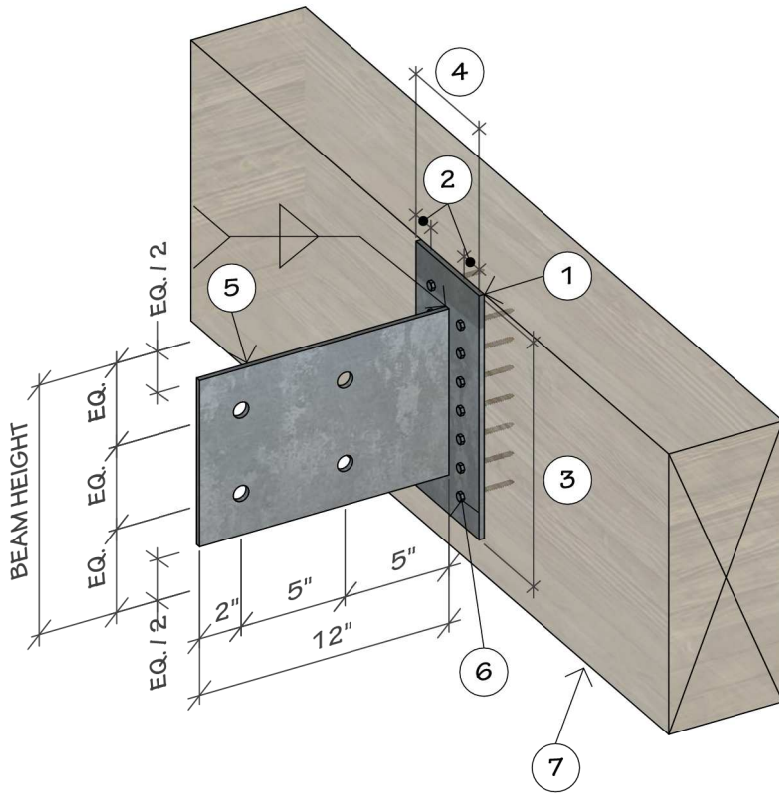


- 1 BEAM - SEE PLAN
- 2 POST BELOW - SEE PLAN
- 3 1/4" STEEL KERF PLATE W/
4-5/8" DIA. M.B. W/ 2" SQ.
WASHERS, TO EACH
MEMBER, COUNTER SINK
AND PLUG
- 4 POST PER PLAN
- 5 BEAM SPLICE PER
STRUCTURAL

15

POST TO BEAM KERF PLATE CONNECTION-OPTION

1" = 1'-0"



- 1 1/4" THICK FACE PLATE W/ 5/16" STAGGERED HOLES.
 - FOR 6X10 BEAM, USE A MIN. OF (12) HOLES.
 - FOR 6X12 BEAM, USE A MIN. OF (14) HOLES.
 - NOTCH 1/4" INTO END OF BEAM SO BACK OF PLATE IS FLUSH W/ END OF BEAM.
- 2 HOLES IN FACE PLATE TO BE 1 1/4" IN FROM EDGE AND SPACED 2" VERTICALLY
- 3 1/4" LESS THAN BEAM HEIGHT
- 4 1/4" LESS THAN BEAM WIDTH
- 5 1/4" THICK KERF PLATE W/ (4) HOLES 5/8" DIA. BOLTS
- 6 1/4" X 2 1/2" SDS SCREWS
- 7 BEAM PER PLAN