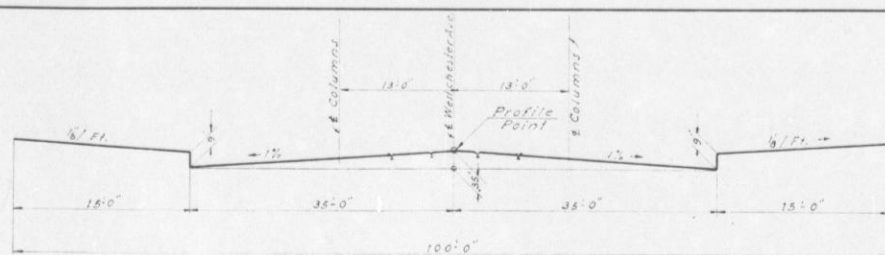
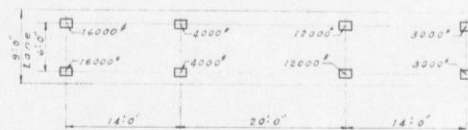




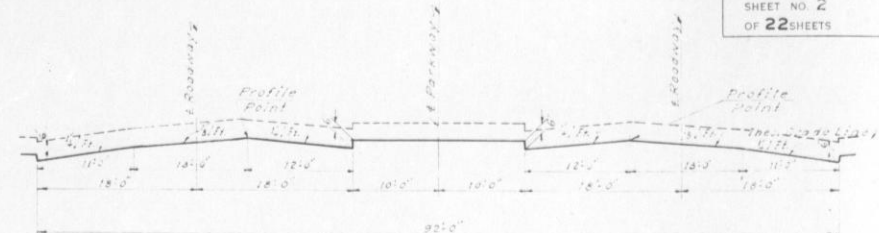
LOCATION PLAN
SCALE IN FEET
0 1000 2000 4000



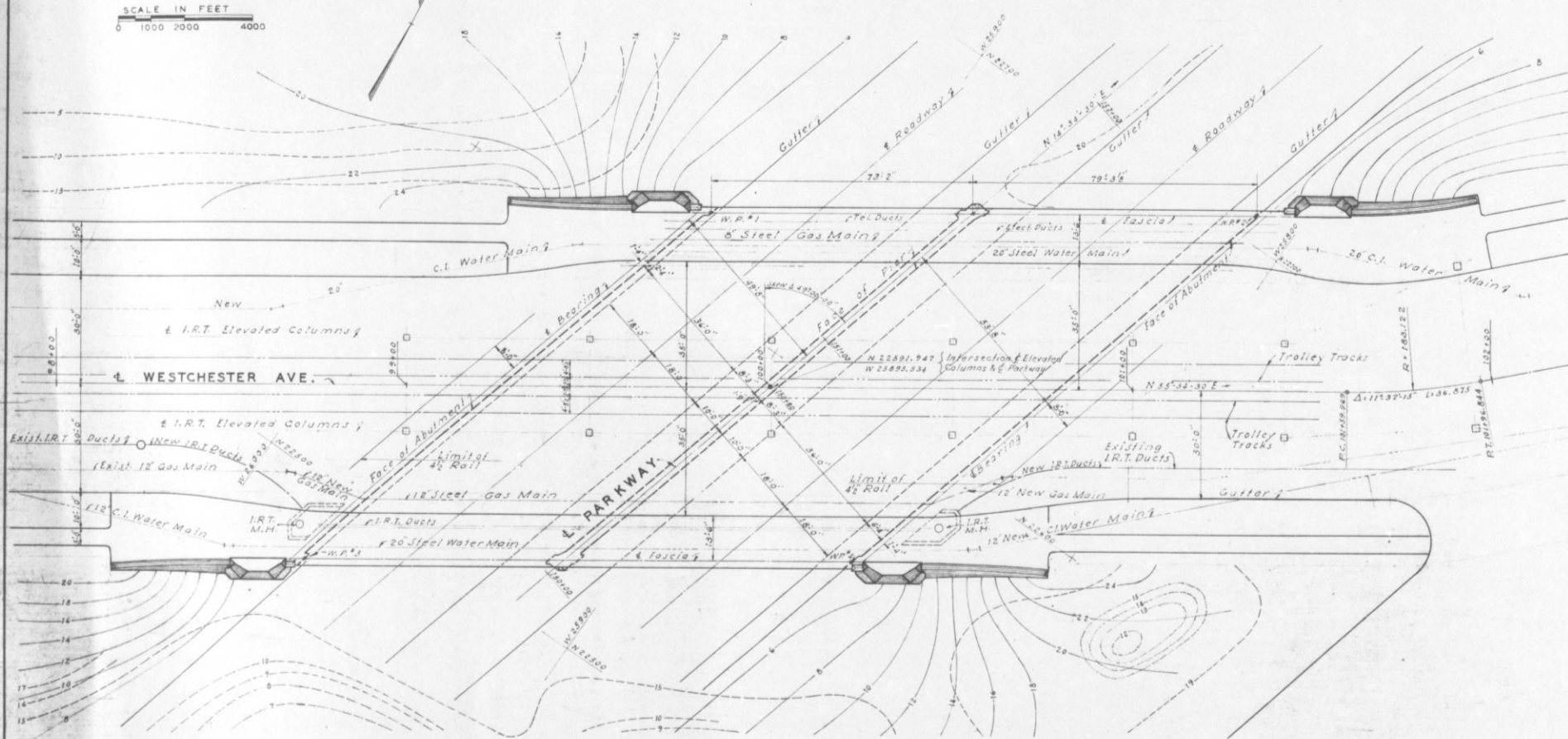
TYPICAL SQUARE SECTION OVER BRIDGE



LOADING DIAGRAM
20 TON LIVE LOAD PER TRAFFIC LANE
(ONE 20 TON TRUCK PRECEDED AND
FOLLOWED BY 15 TON TRUCKS)



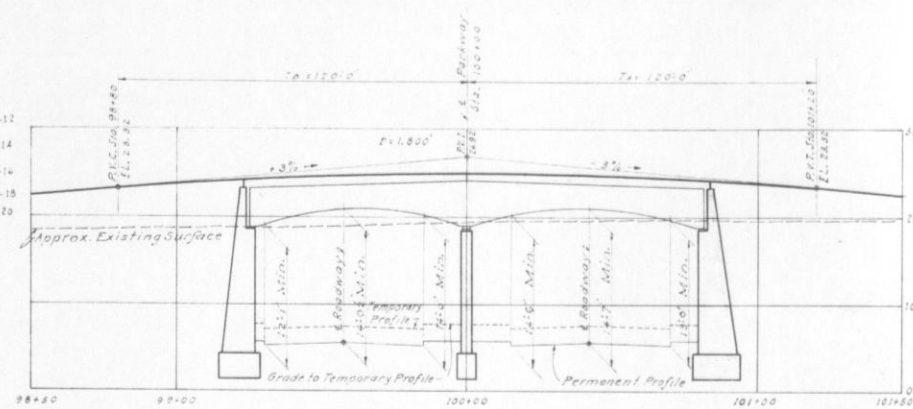
TYPICAL SQUARE SECTION UNDER BRIDGE



PLAN
Scale 1"=20'-0"

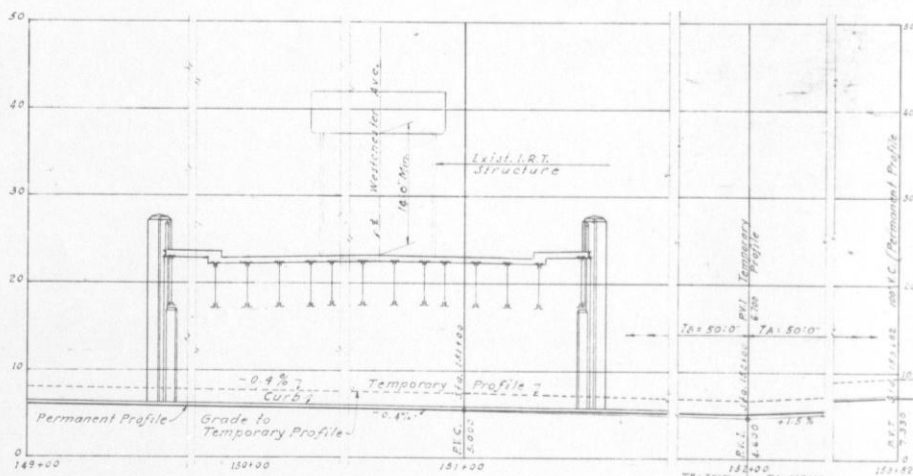
GENERAL NOTES

- Elevations are referred to Borough of Bronx Highway Datum, which is 2.608 above U.S.C. & G.S. Mean Sea Level at Sandy Hook.
- Coordinates shown are in the Bronx System.
- Dimensions on reinforcement are to center lines of bars.
- Provide a minimum of 2" clearance between bars at splices.
- Adequate keys shall be provided at all construction joints.
- Construction joints other than those shown will not be permitted without the written approval of the Engineer.
- Expansion joints shall be formed with flexel expansion joint material or approved equal, except as otherwise noted.
- Back of walls in contact with fill shall be mopped with bituminous material waterproofing.
- Wood sheathing shall be provided for approach wall footing risers and elsewhere as directed by the Engineer if necessary.
- Holes left by boulders or large stones below the limit of footing excavation shall be filled with tamped earth fill before footing is poured.
- Provide at least one stone anchor at each quoin or pier pierstone.
- Provide two stone anchors for quoin stones 3'0" long or more.
- Where B.H. Elevations are called for, pour concrete 4" higher and bush hammer to required elevation.
- For continuation of utilities beyond abutments see sheet N&T.
- Indicates approximate contours of existing ground surface.
- Indicates approximate contours of proposed ground surface.
- Designation "I.R.T." wherever shown on plans signifies at the same time Board of Transportation.



PROFILE ALONG WESTCHESTER AVENUE

SCALE
HOR. 1"=30'-0" VERT. 1"=10'-0"



PROFILE ALONG PARKWAY
LOOKING WEST

SCALE
HOR. 1"=30'-0" VERT. 1"=10'-0"

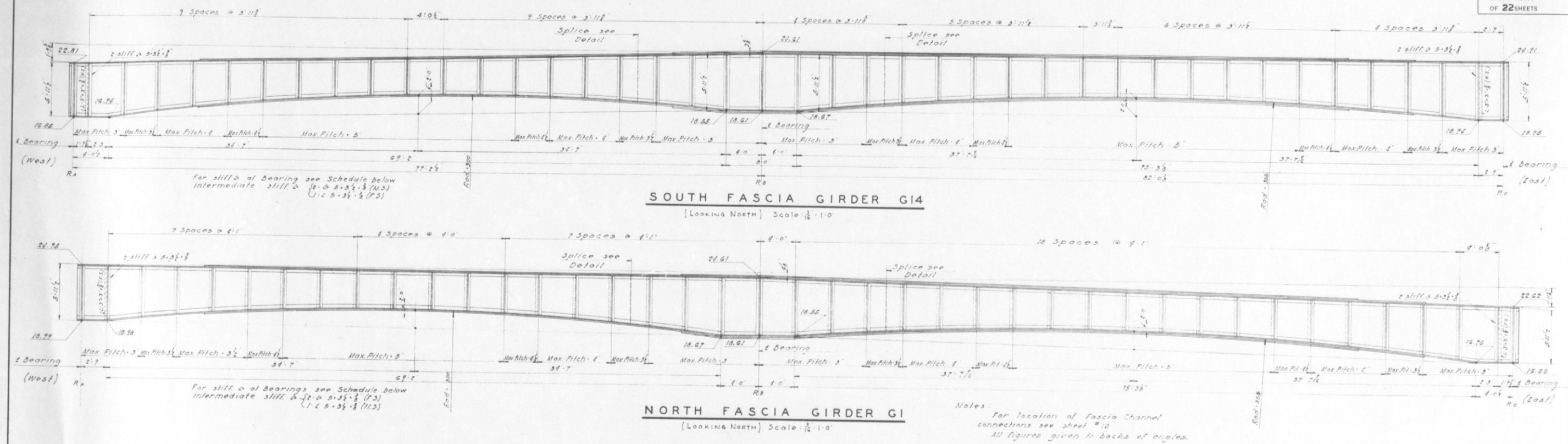
TRIBOROUGH BRIDGE AUTHORITY

HUTCHINSON RIVER PARKWAY EXTENSION
GRADE SEPARATION AT WESTCHESTER AVE.
BOROUGH OF THE BRONX

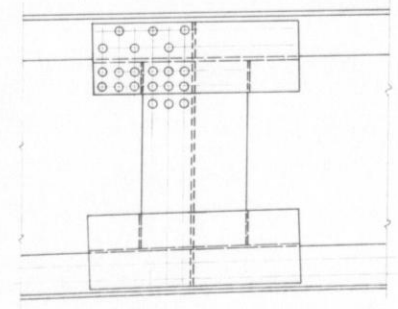
| | | |
|-----------------------------|---------------------------------|--------------------|
| IN CHARGE OF E. L. PAVLO | GENERAL PLAN AND PROFILES | CONTRACT NO. H6 |
| DRAWN BY G. A. | | SCALE AS NOTED |
| TRACED BY " | | |
| CHECKED BY S. R. | | |
| DATE APRIL 12, 1960 | | |
| REVISIONS: | | |

Recommended

Madigan & England
Consulting Engineers



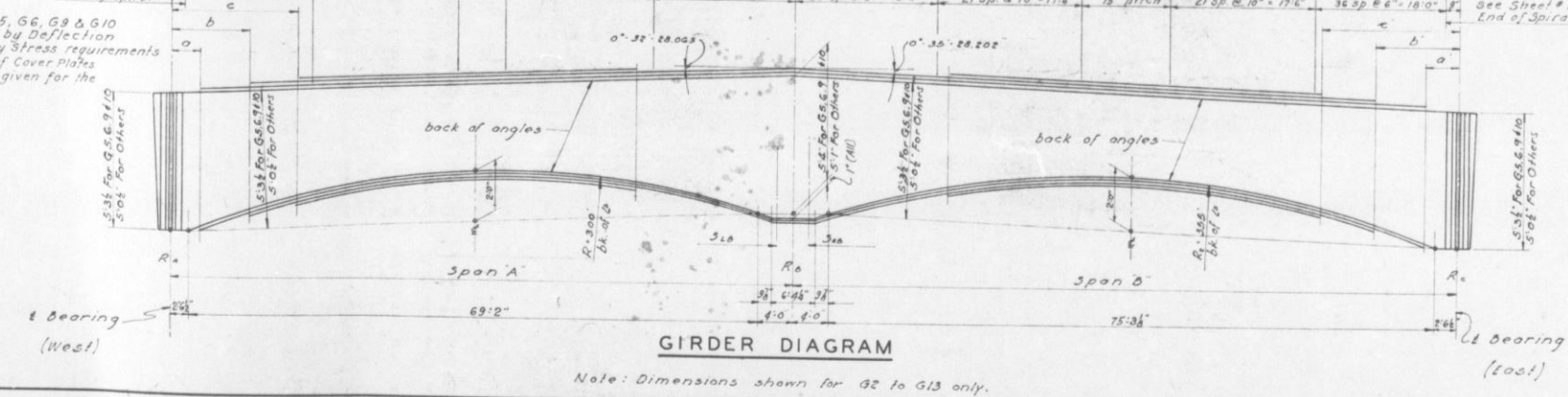
| GIRDER SCHEDULE | | | | | | | | | | | | | | | | | | | |
|-----------------|--------|--------|----------------------------|-------------------------------|----------|--------|------|-------|-------|----------|----------------------|--------|--------|---|----------------------|-----------------------|-----------------------|-----------------------|-----------------------|
| MARK | SPAN A | SPAN B | MAXIMUM SHEARS IN 1000 LBS | MAXIMUM MOMENT IN 1000 FT-LBS | MATERIAL | SPAN A | a | b | c | MATERIAL | SPAN B | a | b | c | STIFFENER | STIFFENER | STIFFENER | INTERMEDIATE | REMARKS |
| G1 | 75.914 | 83.303 | 76 | 125 | 131 | 85 | 24.6 | 11.26 | 19.86 | 13.95 | Web 3/4" x 6" x 1/2" | 14'-0" | — | — | Web 3/4" x 6" x 1/2" | 2 cov. pl. 18" x 1/2" | 2 cov. pl. 18" x 1/2" | 2 cov. pl. 18" x 1/2" | 2 cov. pl. 18" x 1/2" |
| G2 | 75.705 | 81.802 | 129 | 215 | 239 | 147 | 44.9 | 18.61 | 34.80 | 23.38 | Web 3/4" x 6" x 1/2" | 8'-0" | 16'-0" | — | Web 3/4" x 6" x 1/2" | 2 cov. pl. 18" x 1/2" | 2 cov. pl. 18" x 1/2" | 2 cov. pl. 18" x 1/2" | 2 cov. pl. 18" x 1/2" |
| G3 | Do. | Do. | 88 | 119 | 122 | 90 | 22.3 | 11.60 | 17.10 | 15.09 | Web 3/4" x 6" x 1/2" | 7'-0" | 17'-0" | — | Web 3/4" x 6" x 1/2" | 2 cov. pl. 18" x 1/2" | 2 cov. pl. 18" x 1/2" | 2 cov. pl. 18" x 1/2" | 2 cov. pl. 18" x 1/2" |
| G4 | Do. | Do. | 84 | 121 | 124 | 92 | 22.7 | 11.80 | 17.20 | 15.18 | Web 3/4" x 6" x 1/2" | 7'-0" | 17'-0" | — | Web 3/4" x 6" x 1/2" | 2 cov. pl. 18" x 1/2" | 2 cov. pl. 18" x 1/2" | 2 cov. pl. 18" x 1/2" | 2 cov. pl. 18" x 1/2" |
| G5 | Do. | Do. | 233 | 279 | 242 | 133 | 50.6 | 23.76 | 41.66 | 33.05 | Web 3/4" x 6" x 1/2" | 7'-0" | 17'-0" | — | Web 3/4" x 6" x 1/2" | 2 cov. pl. 18" x 1/2" | 2 cov. pl. 18" x 1/2" | 2 cov. pl. 18" x 1/2" | 2 cov. pl. 18" x 1/2" |
| G6 | Do. | Do. | 210 | 303 | 231 | 143 | 51.3 | 26.00 | 41.66 | 36.50 | Web 3/4" x 6" x 1/2" | 6'-0" | 15'-0" | — | Web 3/4" x 6" x 1/2" | 2 cov. pl. 18" x 1/2" | 2 cov. pl. 18" x 1/2" | 2 cov. pl. 18" x 1/2" | 2 cov. pl. 18" x 1/2" |
| G7 | Do. | Do. | 92 | 135 | 139 | 102 | 27.4 | 13.02 | 19.65 | 15.62 | Web 3/4" x 6" x 1/2" | 7'-0" | 14'-0" | — | Web 3/4" x 6" x 1/2" | 2 cov. pl. 18" x 1/2" | 2 cov. pl. 18" x 1/2" | 2 cov. pl. 18" x 1/2" | 2 cov. pl. 18" x 1/2" |
| G8 | Do. | Do. | 92 | 135 | 139 | 102 | 27.4 | 13.02 | 19.65 | 15.62 | Web 3/4" x 6" x 1/2" | 7'-0" | 14'-0" | — | Web 3/4" x 6" x 1/2" | 2 cov. pl. 18" x 1/2" | 2 cov. pl. 18" x 1/2" | 2 cov. pl. 18" x 1/2" | 2 cov. pl. 18" x 1/2" |
| G9 | Do. | Do. | 145 | 225 | 317 | 207 | 52.7 | 33.20 | 42.30 | 34.66 | Web 3/4" x 6" x 1/2" | 7'-0" | 14'-0" | — | Web 3/4" x 6" x 1/2" | 2 cov. pl. 18" x 1/2" | 2 cov. pl. 18" x 1/2" | 2 cov. pl. 18" x 1/2" | 2 cov. pl. 18" x 1/2" |
| G10 | Do. | Do. | 133 | 245 | 305 | 229 | 53.5 | 31.20 | 43.05 | 31.70 | Web 3/4" x 6" x 1/2" | 7'-0" | 14'-0" | — | Web 3/4" x 6" x 1/2" | 2 cov. pl. 18" x 1/2" | 2 cov. pl. 18" x 1/2" | 2 cov. pl. 18" x 1/2" | 2 cov. pl. 18" x 1/2" |
| G11 | Do. | Do. | 84 | 121 | 124 | 92 | 22.7 | 11.80 | 17.20 | 15.18 | Web 3/4" x 6" x 1/2" | 7'-0" | 17'-0" | — | Web 3/4" x 6" x 1/2" | 2 cov. pl. 18" x 1/2" | 2 cov. pl. 18" x 1/2" | 2 cov. pl. 18" x 1/2" | 2 cov. pl. 18" x 1/2" |
| G12 | Do. | Do. | 82 | 119 | 122 | 90 | 22.3 | 11.60 | 17.10 | 15.09 | Web 3/4" x 6" x 1/2" | 7'-0" | 17'-0" | — | Web 3/4" x 6" x 1/2" | 2 cov. pl. 18" x 1/2" | 2 cov. pl. 18" x 1/2" | 2 cov. pl. 18" x 1/2" | 2 cov. pl. 18" x 1/2" |
| G13 | 75.705 | 81.802 | 129 | 215 | 239 | 147 | 44.9 | 18.61 | 34.80 | 23.38 | Web 3/4" x 6" x 1/2" | 8'-0" | 16'-0" | — | Web 3/4" x 6" x 1/2" | 2 cov. pl. 18" x 1/2" | 2 cov. pl. 18" x 1/2" | 2 cov. pl. 18" x 1/2" | 2 cov. pl. 18" x 1/2" |
| G14 | 77.206 | 82.011 | 76 | 125 | 131 | 85 | 24.6 | 11.26 | 19.86 | 13.95 | Web 3/4" x 6" x 1/2" | 14'-0" | — | — | Web 3/4" x 6" x 1/2" | 2 cov. pl. 18" x 1/2" | 2 cov. pl. 18" x 1/2" | 2 cov. pl. 18" x 1/2" | 2 cov. pl. 18" x 1/2" |



TYPE OF SPLICE FOR GIRDERS

Note: Web splices shall be designed for 50% of the shear, and the full moment that the web can carry at that section. Location of splices shall be subject to approval of the Engineer and shall be spaced 10' from column connection. All Stiffener Angles Vertical. Intermediate Stiffener Angles on Fascia Girders, tight fit. All End Stiffener Angles, Mill to bear, tight fit. Rivets 3/4", Open Holes 1/4" (Unless otherwise noted). All material Carbon steel.

NOTE: Design of G5, G6, G9 & G10 was governed by Deflection rather than by Stress requirements. The Lengths of Cover Plates in Schedule are given for the Top Flange.



TRIBOROUGH BRIDGE AUTHORITY

HUTCHINSON RIVER PARKWAY EXTENSION
GRADE SEPARATION AT WESTCHESTER AVE.
BOROUGH OF THE BRONX

IN CHARGE OF
E. L. PAVLO

DRAWN BY
P. A. H.

TRACED BY
T. A. B.

CHECKED BY
A. L. P.

DATE
APRIL 12, 1940

REVISIONS:

ELEVATION
AND SCHEDULE
OF GIRDERS

CONTRACT NO.
H6

SCALE
AS NOTED

Recommended:
Chas. E. ...
Madison, England
Consulting Engineers