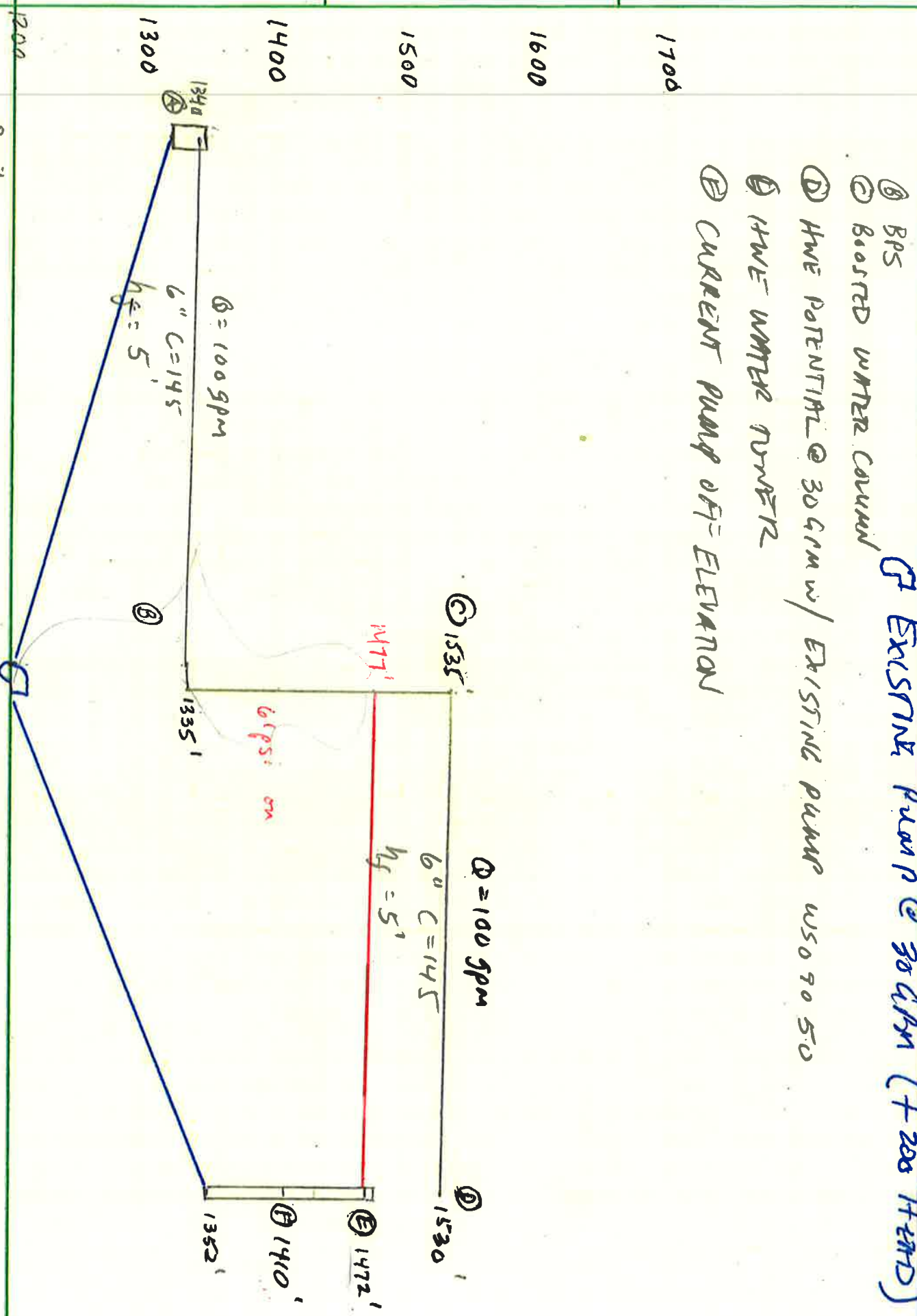


Blue GST HWE

GROUND PROFILES

EXISTING PUMP @ 30 GPM (+200' HEAD)

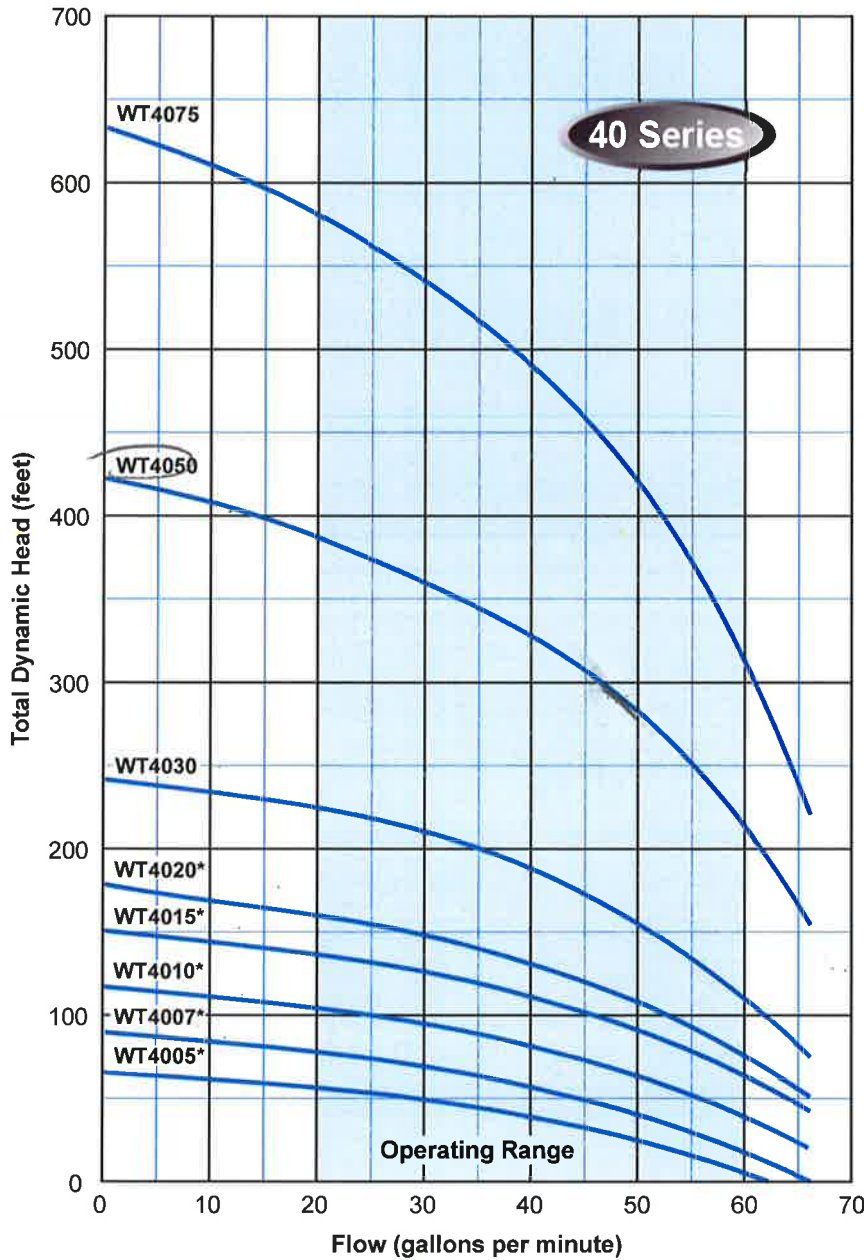
- Ⓐ Blue GST HWE
- Ⓑ BPS
- Ⓒ BOOSTED WATER COLUMN
- Ⓓ HWE POTENTIAL @ 30 GPM w/ EXISTING PUMP w/ 50' 90' 50'
- Ⓔ HWE WATER NUMBER
- Ⓕ CURRENT PUMP OFF ELEVATION



0 mile  
 ASSUME 6" FROM ROUND ABOUT TO BPS  
 ROUND ABOUT 0.12 MILE

2 mile

## 4" WT SERIES SUBMERSIBLE CURVES



MODEL NO.: WT40502C3

Series/Nominal Rated Flow (GPM) \_\_\_\_\_

Horsepower \_\_\_\_\_  
Divide by 10 for Rated Motor Horsepower  
(Example 50 ÷ 10 = 5.0 or 5HP)

Voltage \_\_\_\_\_  
1 = 115V 8 = 200V 2 = 230V 4 = 460V 5 = 575V

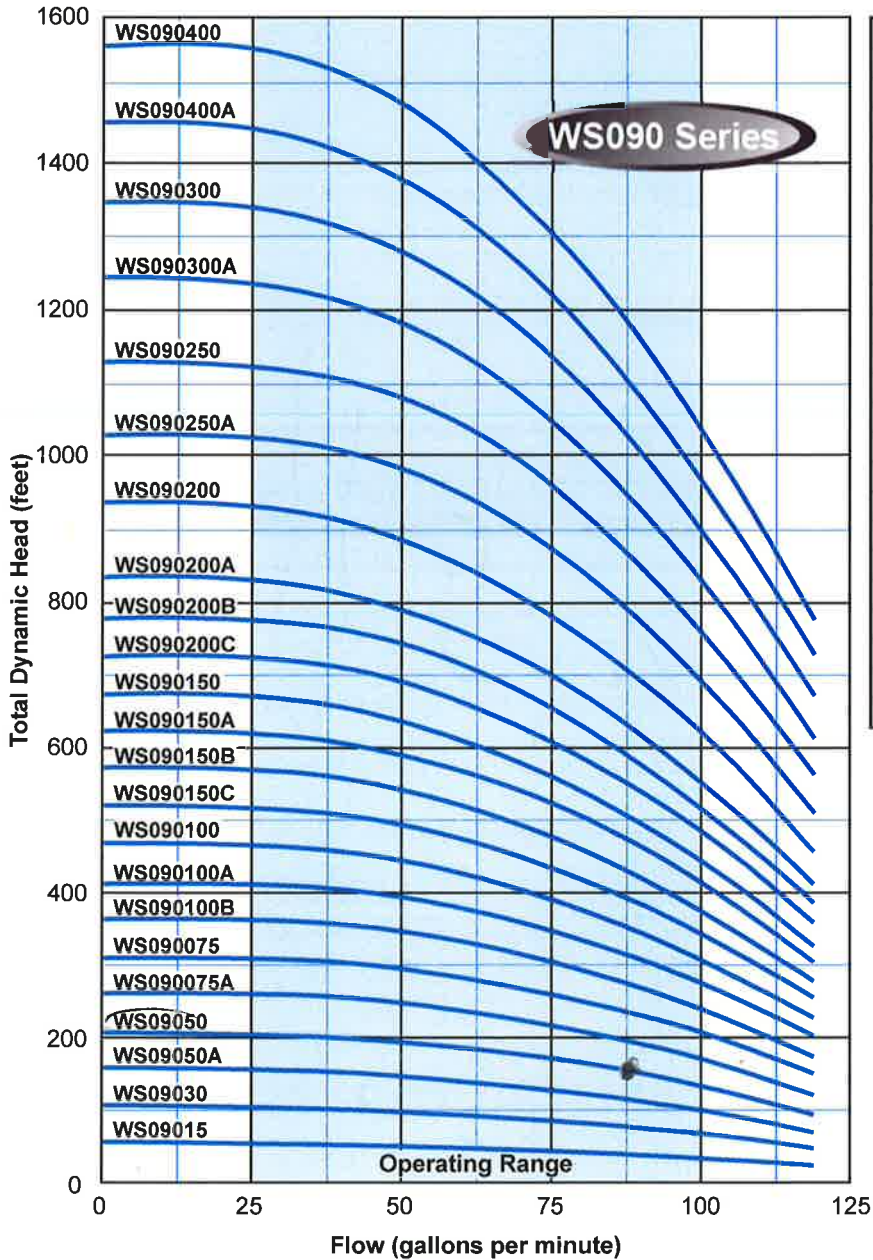
Wire/Control \_\_\_\_\_  
Blank = 2 wire C = Optional Control

Phase (PH) \_\_\_\_\_  
Blank = 1PH 3 = 3PH

**Note:**

\*Available with Franklin Electric MonoDrive constant pressure system.  
These curves are based on factory tests when pumping clear, fresh, non-aerated water at a temperature not exceeding 85°F.  
Due to production tolerances, these curves can vary plus or minus five percent.

## 6" WS SERIES SUBMERSIBLE CURVES



MODEL NO.	HP	STAGES
WS09015	1.5	1
WS09030	3.0	2
WS09050A	5.0	3
WS09050	5.0	4
WS090075A	7.5	5
WS090075	7.5	6
WS090100B	10.0	7
WS090100A	10.0	8
WS090100	10.0	9
WS090150C	15.0	10
WS090150B	15.0	11
WS090150A	15.0	12
WS090150	15.0	13
WS090200C	20.0	14
WS090200B	20.0	15
WS090200A	20.0	16
WS090200	20.0	18
WS090250A	25.0	20
WS090250	25.0	22
WS090300A	30.0	24
WS090300	30.0	26
WS090400A	40.0	28
WS090400	40.0	30

### MODEL NO.: WS090200B2C3

Series/Nominal Rated Flow (GPM)

Horsepower

Divide by 10 for Rated Motor Horsepower (Example 20 ÷ 10 = 2.0 or 2HP)

Impeller Trim

Voltage

1 = 115V 8 = 200V 2 = 230V 4 = 460V 5 = 575V

Wire/Control

Blank = 2 wire C = Optional Control

Phase (PH)

Blank = 1PH 3 = 3PH

**Note:**

These curves are based on factory tests when pumping clear, fresh, non-aerated water at a temperature not exceeding 85°F. Due to production tolerances, these curves can vary plus or minus five percent.



