

B-46

16 x 16

NOTE: PROVIDE 1" CAMBER IN TEES @ FULL DL & LL

24 x 26 MECH'L OPENING

B-50

18 x 24

B-50

20" LAP TEES
 M.D.L. = 23 K.F.T
 M.C.L. = 9 K.F.T

14 x 14 MECH'L OPENING

B-49

18 x 24

20" LAP TEES
 M.D.L. = 19.5 K.F.T
 M.C.L. = 7.2 K.F.T

NOTE: PROVIDE 2" CAMBER IN TEES @ FULL DL & LL

B-48

18 x 24



SPACES @

5'-0"

17

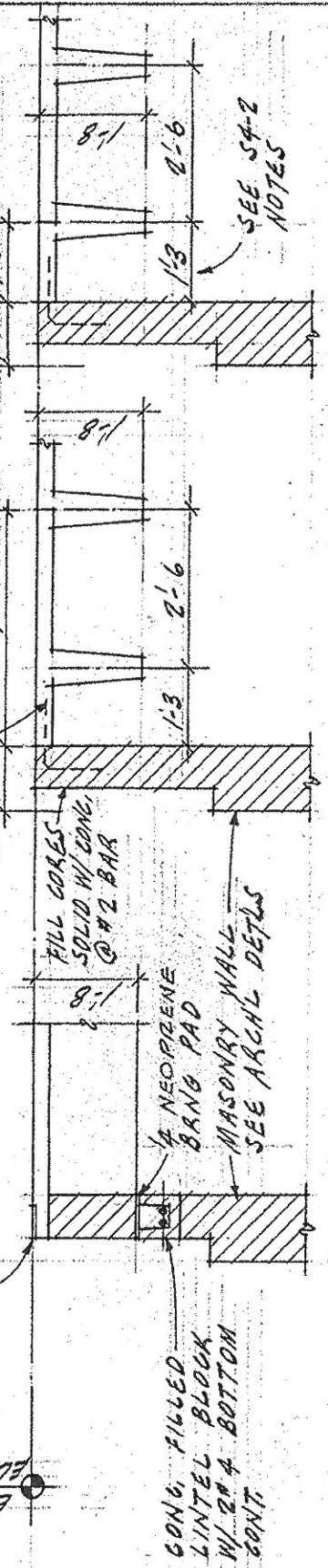
B-50

7-9

ELEV + 135.52 @ S4-1
 ELEV + 103.22 @ S4-1A

4" W x 6" L x 4" H @
 EA. STEM

#2 BAR @ 2'-0" O.C.
 EAST IN TEE
 SEE DET @ RIGHT



FILL CORES
 SOLID W/ CONC.
 @ #2 BAR

1/2 NEOPRENE
 BRNG. PAD

MASONRY WALL
 SEE ARCH'L DETLS

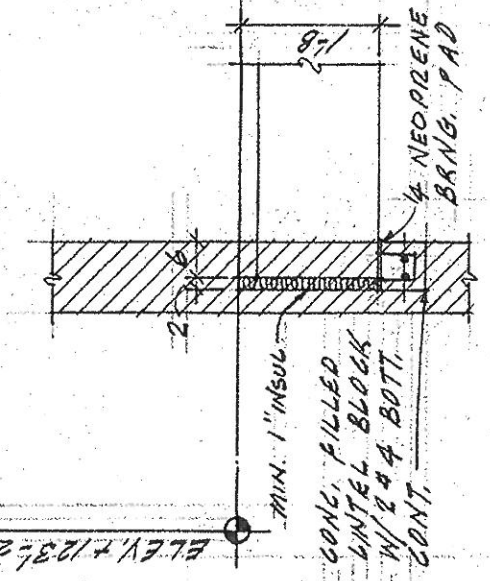
CONC. FILLED
 LINTEL BLOCK
 W/ 2#4 BOTTOM
 CONT

SECTION S4-1

SECTION S4-2

SECTION S4-3

ELEV + 123.23



SECTION S4-4

SECTION S4-5

SECTION S4-6

DE
 55