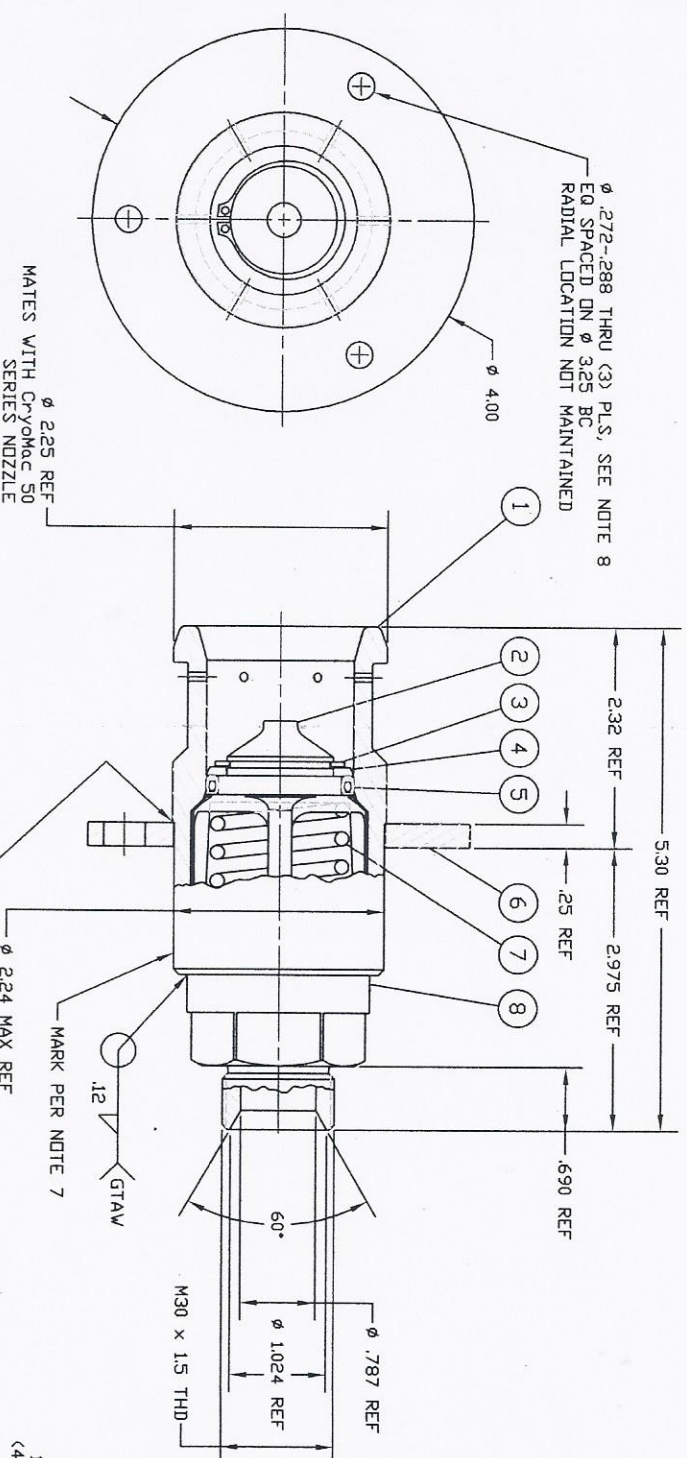


THIS DRAWING EXCEPT AS NOTED, IS THE PROPERTY OF THE COMPANY AND IS NOT TO BE REPRODUCED OR TRANSMITTED IN ANY FORM OR BY ANY MEANS, ELECTRONIC OR MECHANICAL, INCLUDING PHOTOCOPYING, RECORDING, OR BY ANY INFORMATION STORAGE AND RETRIEVAL SYSTEM. THE COMPANY ASSUMES NO LIABILITY FOR DAMAGES OF ANY KIND, INCLUDING CONSEQUENTIAL DAMAGES, ARISING FROM THE USE OF THIS DRAWING. THE COMPANY ASSUMES NO LIABILITY FOR DAMAGES OF ANY KIND, INCLUDING CONSEQUENTIAL DAMAGES, ARISING FROM THE USE OF THIS DRAWING.



1. ALL COMPONENTS CLEANED PER CGA G-4.1 PRIOR TO ASSEMBLY
2. LUBRICATE THREADED JOINTS USING 'KRYTOX' GPL-206 OR EQUAL, IF REQUIRED
3. GENERAL OPERATING SPECIFICATIONS:
 - a. MEDIA: LNG (LIQUEFIED NATURAL GAS)
 - b. MAX. INTERNAL PRESSURE: 300 PSIG (FUELING); 550 PSIG (STATIC SYSTEM)
 - c. TEMPERATURE RANGE: -350°F TO +150°F
4. PACKAGE IN A SEALED POLY BAG IDENTIFIED PER W.D. REQUIREMENTS
5. ALL WELDS PROVIDING AN INTERNAL PRESSURE TIGHT INTERFACE SHALL BE LEAK FREE
6. FUNCTIONAL TEST:
 - a. --DELETED--
 - b. --DELETED--
 - c. VERIFY -0- LEAKAGE AT THE POPPET SEAL. USE 'SNOPP' DR 'TRAX' AT 50 PSIG (LOW) AND 300 PSIG (HIGH) FOR 30 SECONDS EACH, -0- BUBBLES
7. PERMANENTLY MARK ON SURFACE INDICATED THE FOLLOWING:
 - a. MACRO PART NUMBER & REVISION LEVEL
 - b. ASSEMBLY DATE CODE
 - c. HOUSING MATERIAL TRACEABILITY CODE 'MMC'
 - d. OPERATING PRESSURE:
 1. FUELING 300 PSIG / 20.7 BAR
 2. SYSTEM 550 PSIG / 38 BAR
8. (3) MOUNTING HOLES (Ø .280 NDM) MAY HAVE SLIGHT DISCONTINUITIES DUE TO MFG. METHODS. A Ø .262 PIN SHALL FREELY PASS THROUGH ALL HOLES
9. BUFF WELDS TO REMOVE WELD HEAT DISCOLORATION

REFERENCE ONLY

REV	DESCRIPTION	DATE	APPROVAL
A	REVISIONS		
B	REVISE GEN. NOTES, SEE DWN	02-28-11	HK
C	ADD NOTE 9	06-14-11	HK
D	ADD ITEM 9, COVER ASSY	09-06-11	HK
E	REVISE NOTE 7d	12-08-11	HK
F	REVISE NOTE 7d	01-06-12	JD
G	ADD -2 CONFIGURATION	06-06-12	JD
H	BODY ID WAS 233 MAX. MATLS WERE 302/304/316 CRES	07-02-12	JD
J	UPDATE #225 REF NOTE, CORRECT NOTE 7 TYP0	10-23-12	JD
K	UPDATE NOTE 5, DELETE NOTES 6a & 6b, ADD 'NOM' TO NOTE 6c	08-01-13	JD

QTY	DESCRIPTION	PART NUMBER	MATERIAL / FINISH SPECIFICATION	UNIT
1	COVER AND CABLE ASSY	13665	STEEL, CRES, ALUM	10
0	COVER & CHAIN ASSY	14091	BLACK POLYETHENE, ALUM, CRES	9
1	FITTING, WELD	13995	CRES	8
1	SPRING	13607	CRES	7
1	FLANGE	13626	CRES	6
1	SEAL ASSY	14010	UHMW POLYMER / CRES SPRING	5
1	RETAINER	13527	BRASS	4
1	RETAINING RING	13531	CRES	3
1	POPPET	13599	CRES	2
1	BIDDY	13598	CRES	1

QTY	DESCRIPTION	PART NUMBER	MATERIAL / FINISH SPECIFICATION	UNIT
1	COVER AND CABLE ASSY	13665	STEEL, CRES, ALUM	10
0	COVER & CHAIN ASSY	14091	BLACK POLYETHENE, ALUM, CRES	9
1	FITTING, WELD	13995	CRES	8
1	SPRING	13607	CRES	7
1	FLANGE	13626	CRES	6
1	SEAL ASSY	14010	UHMW POLYMER / CRES SPRING	5
1	RETAINER	13527	BRASS	4
1	RETAINING RING	13531	CRES	3
1	POPPET	13599	CRES	2
1	BIDDY	13598	CRES	1

QTY	DESCRIPTION	PART NUMBER	MATERIAL / FINISH SPECIFICATION	UNIT
1	COVER AND CABLE ASSY	13665	STEEL, CRES, ALUM	10
0	COVER & CHAIN ASSY	14091	BLACK POLYETHENE, ALUM, CRES	9
1	FITTING, WELD	13995	CRES	8
1	SPRING	13607	CRES	7
1	FLANGE	13626	CRES	6
1	SEAL ASSY	14010	UHMW POLYMER / CRES SPRING	5
1	RETAINER	13527	BRASS	4
1	RETAINING RING	13531	CRES	3
1	POPPET	13599	CRES	2
1	BIDDY	13598	CRES	1

Macro Technologies LLC
 12530 - 15th Ave NE • Kirkland, WA • 98034

ADJ, MALE, RECEPTACLE, FUELING
 M30 THREAD, METRIC TUBE FITTING

SCALE: NONE
 REV: 1
 DATE: 01-19-11