

Stab-lok® Loadcentres

The Easiest and Fastest Installation Ever

Loadcentre Features:

- Architectural white trims and doors
- Plastic filler plates (no twist-outs)
- Split neutrals
- Plated copper bus to breaker connections
- Recreation vehicle power centres
- Fusible loadcentre inserts (FLCI)
- Combination trims offering surface and flush mounting flexibility
- Multiple knock outs
- Type 1 and 3R enclosures
- A full line of loadcentre accessories
- Fast-paks

Breaker Features:

- Type NC with Robertson/slot screws
- Type NC with colour coded handles
- Thermal magnetic trip protection
- Exclusive line side stab connection
- Trip free operation
- Calibrated at 40° C
- Availability of a wide range of GFCIs
- Arc resistant case



BE124-48-1C100

NC The New Compact Stab-lok Breaker - 1/2" Wide per pole



NC015, NC0215, NC0230

NA The Original Stab-lok Breaker - 1" Wide per pole



NA15



NA215



NA3P20



NA2P100

Stab-lok Breaker Rating Table

Type	Poles	Amp Rating	Maximum Voltage	Interrupting Capacity
NC	1	15-50	120	10,000 A
	2	15-50	120/240	10,000 A
NA	1	15-50	120	10,000 A
	2	15-150	120/240	10,000 A
	3	15-100	240	10,000 A
NAH	1	15-50	120	22,000 A
	2	15-125	120/240	22,000 A
	3	15-100	240	22,000 A
1C	2	30-40	120/240	10,000 A
		50-125		22,000 A
2C	2	100-200	120/240	22,000 A

Table of Contents

	Page
Circuit Breakers and Accessories.....	2-3
Ground Fault Circuit Breakers and Spa Pack.....	4
Arc-Fault Circuit Interrupters.....	5
Main Lugs Loadcentres - Type 1 Indoor, Single Phase.....	6
Combination Service Entrance Loadcentres - Type 1 Indoor, Single Phase.....	7
Fast-pak.....	8
Fusible Loadcentre Inserts (FLCI).....	8-9
Loadcentre - Generator Panel.....	10
Loadcentres - Type 3R Outdoor, Single Phase.....	10
Loadcentres - Type 1 Indoor/Type 3R Outdoor, Three Phase, 4 Wire, 120/240V AC Max.....	11
Enclosed Breaker Devices.....	12
Recreational Vehicle Park Power Centres.....	13
Recreational Vehicle Park Pedestals/Enclosures.....	14
Stab-lok Loadcentre Accessories.....	15-16
Stab-lok - Packaging and Shipping Weights.....	17-18





Circuit Breakers

Standard Loadcentre Breakers

B Stab-lok®

Type	Amp Rating	1 Pole Cat. No.	List Price ‡	Lug Range	2 Pole Cat. No.	List Price ‡	Lug Range	3 Pole Cat. No.	List Price ‡	Lug Range
NC	15	NC015		#14 - #6	NC0215		#14 - #6	—	—	—
	20	NC020			NC0220			—	—	
	25	NC025			NC0225			—	—	
	30	NC030			NC0230			—	—	
	40	NC040			NC0240			—	—	
	50	NC050		#14 - #4	NC0250		#14 - #4	—	—	
NA	15	NA15 ⁽²⁾		#14 - #2	NA215		#14 - #2	NA3P15		#14 - 1/0
	20	NA20 ⁽²⁾			NA220			NA3P20		
	25	NA25			NA225			—	—	
	30	NA30			NA230			NA3P30		
	35	NA35			—	—		—	—	
	40	NA40			NA240			NA3P40		
	50	NA50		NA250		NA3P50				
	60	—	—	NA260		NA3P60				
	70	—	—	NA270		NA3P70				
	90	—	—	NA2P90		NA3P90				
	100	—	—	NA2P100		NA3P100				
	125	—	—	NA2P125		—	—			
	150	—	—	NA2P150 ¹		—	—			

Notes:

1. NA2P150 rated 150A when used with copper conductor only
2. Switching duty approved breakers. Breakers are marked SWD
3. 2-pole and 3-pole breakers greater than 70A take 4 and 6 NA breaker positions respectively
4. Use solid conductor only when #14 wire is used

Stab-lok Main Circuit Breakers

Type	Amp Rating	2 Pole Cat. No.	List Price ‡	Lug Range	3 Pole Cat. No.	List Price ‡	Lug Range
NA	30-100	—	—	—	Use Breaker Table Above		
1C	30	1C30		#4-2/0	—	—	—
	40	1C40			—	—	—
	50	1C50			—	—	—
	60	1C60			—	—	—
	70	1C70			—	—	—
	90	1C90			—	—	—
	100	1C100			—	—	—
2C	125	1C125		#4-250MCM	—	—	—
	100	2C100			—	—	—
	125	2C125			—	—	—
	150	2C150			—	—	—
	175	2C175		—	—	—	
	200	2C200		—	—	—	



2C200

Circuit Breakers

Special Loadcentre Breakers (22,000 AIR)

Type	Amp Rating	1 Pole Cat. No.	List Price ‡	Lug Range	2 Pole Cat. No.	List Price ‡	Lug Range	3 Pole Cat. No.	List Price ‡	Lug Range
NAH	15	NAH15 ⁽¹⁾		#14 - #2	NAH215		#14 - #2	—		#14 - 1/0
	20	NAH20 ⁽¹⁾			NAH220			—		
	30	NAH30			NAH230			—		
	40	NAH40			NAH240			—		
	50	NAH50			NAH250			—		
	60	—	—		NAH260			—		
	70	—	—	—		—				
	90	—	—	—		—				
	100	—	—	NAH2P100		—				
	125	—	—	NAH2P125		—				
	150	—	—	—		—				

Notes:

1. Switching duty approved breakers. Breakers are marked SWD
2. 2-pole and 3-pole breakers greater than 70A take 4 and 6 NA breaker positions respectively
3. Use solid conductor only when #14 wire is used
4. Special loadcentre breakers obsolete, when stock equals zero

Stab-lok Breaker Accessories

Breaker Type	Poles	Amp Rating	Handle Lock Off Non-Padlocking		Handle Lock Off Padlocking		Handle Tie	
			Cat. No.	List Price ‡	Cat. No.	List Price ‡	Cat. No.	List Price ‡
NC	1	15 - 50	NC-LOK ⁽³⁾ / 1LOK ⁽²⁾		—	—	NC-TIE ⁽¹⁾ / HTNC ⁽²⁾	
	2	15 - 50	—	—	CLOK (Not suitable for ribbed handles)		—	—
NA	1	15 - 50	1LOK		1LOB		HTNA (Not to be used for 2 pole applications)	
	2	15 - 70	—	—	2LOK (+3 Pole Modular)		—	—
	2	90 - 150	—	—	CLOK		—	—
	3	Non - Modular	—	—	3-100LOK		—	—
	3	Modular	—	—	2LOK		—	—

Note: Standard Packaging Size for all breaker accessories is 10

1. Suitable for ribbed handled NC breakers.
2. Suitable for square handled NC breakers.
3. Suitable for ribbed handled NC 1 + 2 pole breakers.





Ground Fault Circuit Breakers

Stab-lok GFI with 5 mA Sensitivity (Class A)

Type	Amp Rating	1 Pole Cat. No.	List Price ‡	2 Pole Cat. No.	List Price ‡
NA	15	NAGF-15		NAGF-215	
	20	NAGF-20		NAGF-220	
	30	NAGF-30		NAGF-230	
	40	NAGF-40		NAGF-240	

Stab-lok GFI with 33 mA Sensitivity

Type	Amp Rating	1 Pole Cat. No.	List Price ‡	2 Pole Cat. No.	List Price ‡
NA	15	NAGF-15-33		NAGF-215-33	
	20	NAGF-20-33		NAGF-220-33	
	30	NAGF-30-33		NAGF-230-33	
	40	NAGF-40-33		NAGF-240-33	

Notes:

1. Submersible pump installations require ground fault protection to the maximum sensitivity level of 10mA. These breakers are designed to meet the Canadian Electrical Code under rule CEC 26-956
2. GFI breakers maximum 250 feet (one way) feeder length
3. Use solid conductor only when #14 wire is used
4. GFI 15 Amp Handles - Blue, GFI 20 Amp Handles - Red, GFI 30 Amp Handles - Green, GFI 40 Amp Handles - Grey

Ground Fault Devices (GFI)

Spa Pack

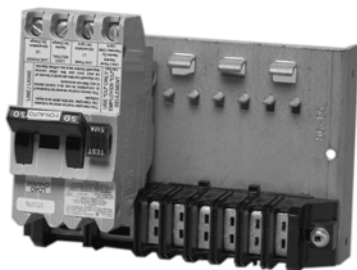
The MDGFI-250 consists of a 120/240 VAC 6 circuit NC breaker panel interior and a Back-fed NAGF 50A 2-Pole Non-Automatic (NAGF-250NA) Ground Fault Switch. It does not provide overload or short circuit protection and is designed to be used as part of a hot tub spa protection package that is fed by an upstream device. The non-automatic ground fault switch is not suitable for use in Stab-lok loadcentres.

- 5 mA sensitivity
- Local Indication

Spa Pack

Amp Rating	Poles	Cat. No.	List Price ‡
50	2	MDGFI-250	

Note: GROUND FAULT SWITCH NOT TO BE USED IN STAB-LOK LOADCENTRES



MDGFI-250



NAGF-15



NAGF-215

Stab-lok GFI with 10mA Sensitivity

Type	Amp Rating	2 Pole Cat. No.	List Price ‡
NA	15	NAGF-215-10	
	20	NAGF-220-10	
	30	NAGF-230-10	
	40	NAGF-240-10	



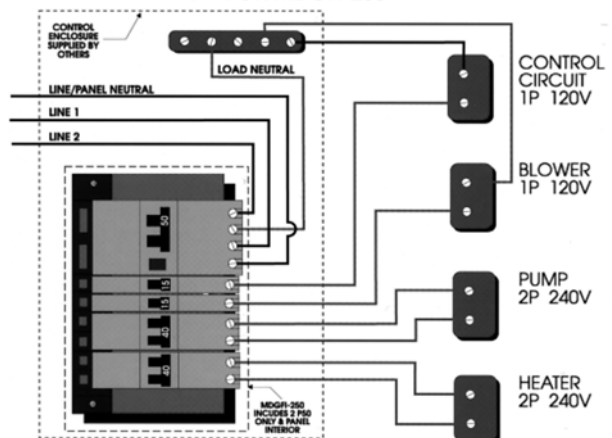
Spa Buddy

A complete kit consisting of a Type 1/3R enclosure, factory installed 2P50A non-automatic GFCI plus a loose NCO250 2P50A stab-lok circuit breaker.

Spa Buddy

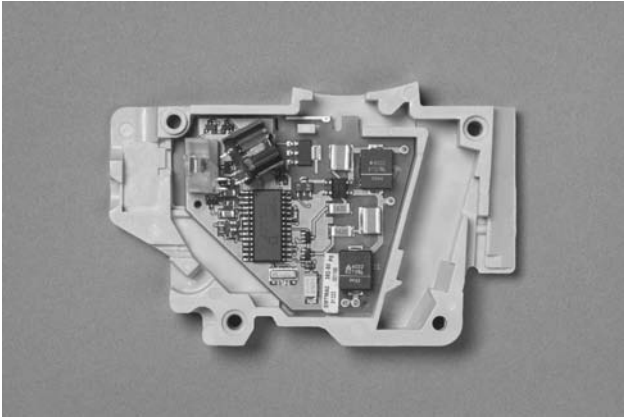
Amp Rating	Poles	Cat. No.	List Price ‡
50	2	NAGF250SB	

TYPICAL APPLICATION & WIRING DIAGRAM FOR MDGFI-250



Arc-Fault Circuit Interrupters

As per the Canadian Electrical Code (CEC), AFCIs will be required for ALL bedroom receptacle circuits beginning January 2002. The CEC does not mandate existing homes be upgraded with AFCIs. However, if a new bedroom is added, the AFCI will be required. Reduce the risk of fire with the installation of Federal Pioneer arc-fault circuit interrupters.



Stab-lok - AFCI Stab-lok Arc Fault Circuit Interrupters (10,000 AIR)

Ampere Rating	Poles 120Vac	Catalogue Number
15	1	NA15AFI
20	1	NA20AFI

Arc faults are any abnormal flow of electricity that create an arc, spark or flash which is hot and capable of igniting flammable materials, thereby increasing the potential for a residential fire.

Arcing can occur and may lead to fires in these common conditions:

- pierced insulation on electrical construction wire
- frayed appliance extension cords
- loose electrical connections
- overheated electrical cords and wires

The Federal Pioneer AFCI utilizes state-of-the-art digital microprocessor technology that has been coupled with a Stab-lok circuit breaker. These devices will disconnect power to the circuit during any of these conditions:

- short circuit
- overload
- arc faults - parallel, line-to-neutral or line-to-ground, or in series on a damaged wire

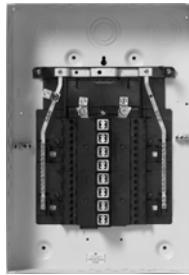
Federal Pioneer AFCI can be installed in any new or existing Stab-lok load centre.



Main Lugs Loadcentres - Type 1 Indoor, Single Phase



116-32-125-WDS



116-32-125



142-84-225S

Stab-lok®

B

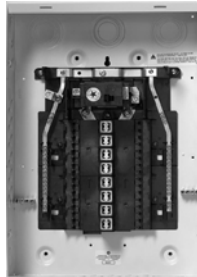
Stab-lok Main Lugs Load Centres (1 Phase, 3 Wire, 120/240V AC Max.)

Bus Rating (A)	Catalogue Number	List Price †	Main Wire Size	Main Bus Material	Notes	Box Dimensions							
						Height		Width		Depth			
						Inches	mm	Inches	mm	Inches	mm		
60A	102-4 S/F		14-6 Cu or 12-6 Al	Copper	1, 2, 4	7.38	187	4.75	121	2.63	67		
70A	104-8 S/F		10-4 Cu or 10-2 Al			9.88	251	8.00	203	3.00	76		
125A	108-16-125		6-2/0 (Cu/Al)	Copper	1, 2, 3, 5, 6	17.50	445	13.50	343	3.75	96		
	112-24-125					19.50	496	13.50	343	3.75	96		
	112-24-125-WD					19.50	496	13.50	343	3.75	96		
	116-32-125					19.50	496	13.50	343	3.75	96		
	116-32-125-WD					19.50	496	13.50	343	3.75	96		
124-48-125		23.50	597			13.50	343	3.75	96				
225A	132-64-225		6-250MCM (Cu/Al)			Aluminum	1, 2, 7, 8	36.00	915	13.50	343	3.75	96
	142-84-225							44.50	1131	13.50	343	3.75	96
400A	142-84-400 S/F		(2)1/0-500MCM (Cu/Al)					51.00	1295	16.13	410	6.00	152

Notes:

1. CSA certified for use with Copper or Aluminum conductors.
2. CSA certified for horizontal, inverted and vertical mounting.
3. Sub-feed lug kits, refer to page B-16.
4. A door kit is not available.
5. "WD" indicates units supplied with a factory installed door. All 125A and 225A units can be factory ordered with a door, add suffix "WD". Example: 120-40-225-WD.
6. Door kits, refer to page B-15.
7. Includes a door with non-lockable latch.
8. Includes Sub-feed lugs.

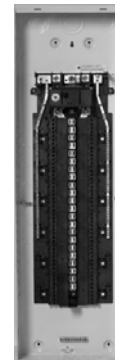
Combination Service Entrance Loadcentres -Type 1 Indoor, Single Phase



BE1-116-32-1C100



BE132-64-2C200



BE142-84-2C200

Stab-lok®
B

Stab-lok Combination Service Entrance Load Centres (1 Phase, 3 Wire, 120/240V AC Max.)

Bus Rating (A)	Main Breaker (A)	Catalogue Number	List Price ‡	Main Bus Material	Notes	Box Dimensions					
						Height		Width		Depth	
						Inches	mm	Inches	mm	Inches	mm
125	60	BE112-24-1C60		Copper	1, 2, 3, 4, 5, 6	19.50	496	13.50	343	3.75	96
		BE112-24-1C100				19.50	496	13.50	343	3.75	96
		BE112-24-1C100-WD				19.50	496	13.50	343	3.75	96
	100	BE116-32-1C100				19.50	496	13.50	343	3.75	96
		BE116-32-1C100-WD				19.50	496	13.50	343	3.75	96
		BE124-48-1C100				23.50	597	13.50	343	3.75	96
		BE132-64-1C100				30.00	762	13.50	343	3.75	96
		BE116-32-1C125				19.50	496	13.50	343	3.75	96
		BE124-48-1C125				23.50	597	13.50	343	3.75	96
	125	BE132-64-1C125				30.00	762	13.50	343	3.75	96
		BE120-40-2C150				30.00	762	13.50	343	3.75	96
		BE120-40-2C150-WD				30.00	762	13.50	343	3.75	96
225	150	BE132-64-2C150		36.00	915	13.50	343	3.75	96		
		BE132-64-2C150-WD		36.00	915	13.50	343	3.75	96		
		BE120-40-2C200		30.00	762	13.50	343	3.75	96		
	200	BE120-40-2C200-WD		30.00	762	13.50	343	3.75	96		
		BE132-64-2C200		36.00	915	13.50	343	3.75	96		
		BE132-64-2C200-WD		36.00	915	13.50	343	3.75	96		
		BE142-84-2C200		44.50	1131	13.50	343	3.75	96		
		BE142-84-2C200-WD		44.50	1131	13.50	343	3.75	96		

Notes:

1. CSA certified for use with Copper or Aluminum conductors.
2. CSA certified for horizontal, inverted and vertical mounting.
3. For main breaker wire sizes, refer to page B-2.
4. Price includes factory installed main breaker. Other amperage main breakers are also available by special factory order. Substitute amp rating at end of catalogue number. (Ex. BE116-32-1C100 to BE116-32-1C70 for 70A)
Loadcentres will have a two week lead time from factory.
5. "WD" indicates units supplied with a factory installed door. All 125A and 225A units can be factory ordered with a door, add suffix "WD".
Example: BE132-64-2C200-WD.
6. Door kits, refer to page B-15.



Fast-Pak

Stab-lok Combination Service Entrance Fast-Paks

Cat. No.	No. of NC Ccts	Main Breaker	Loadcentre	No. of NC015's	No. of NC0215's	No. of NC0220's	No. of NC0230's	No. of NC0240's	List Price †
FP1032	32	1C100	BE116-32-1C100	10	3	0	1	1	
FP1048	48	1C100	BE124-48-1C100	10	3	0	1	1	
FP1064	64	1C100	BE132-64-1C100	10	3	0	1	1	
FP1232	32	1C125	BE116-32-1C125	10	3	0	1	1	
FP1248	48	1C125	BE124-48-1C125	10	3	0	1	1	
FP2040	40	2C200	BE120-40-2C200	10	3	0	1	1	
FP2064	64	2C200	BE132-64-2C200	10	3	0	1	1	
FP2084	84	2C200	BE142-84-2C200	10	3	0	1	1	

The Stab-lok Fast-Pak provides you with a complete loadcentre (Tub, Trim and Interior) and branch breaker package for all your service needs. Main Breakers are factory installed to save you time and provide a worry free connection.

For main breaker wire sizes, please refer to page B-2.
For loadcentre dimensions please refer to page B-7.
Door kits, refer to page B-15.

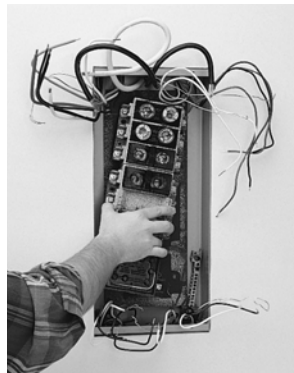


Fusible Loadcentre Inserts (FLCI)

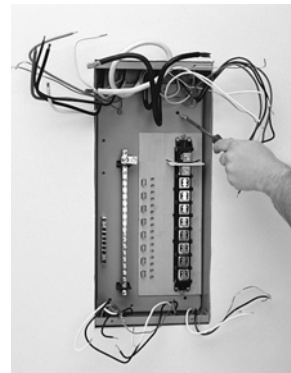
Fusible Loadcentre Inserts



Step #1
Identify Box Dimensions and Catalogue Number



Step #2
Remove Old Fusible Interior



Step #3
Install New FLCI



Step #4
Complete Installation

Stab-lok Fusible Loadcentre Inserts (FLCI) offers the safety and reliability of a modern circuit breaker loadcentre system featuring Stab-lok circuit breakers. Easily replaces outdated fusible loadcentres. No holes to drill. No new ground required. No branch conductors or conduit to remove. Using the Stab-lok FLCI substantially reduces installation time, as much as 80%, allowing for the economical replacement of old fusible loadcentres.

Consult Schneider Electric Sales for FLCI Catalogue Number and Pricing Information.

Fusible Loadcentre Inserts (FLCI)

READ THIS FIRST!

To select the proper FLCI, follow these three steps:

- Step 1: Find your fusible loadcentre catalogue number using columns 1 and 2.
- Step 2: Confirm that the original fusible loadcentre box dimensions match those in columns 5, 6, and 7.
- Step 3: Use column 3 to identify the Stab-lok Fusible Loadcentre Insert (FLCI) catalogue number.

CAUTION: Do not proceed with an installation unless both the existing catalogue number and box dimensions match.

1 Original Manufacturer	2 Original Main Lug Loadcentre Catalogue Number	3 Federal Pioneer Catalogue Number**	4 # of NC Poles	6 Box Dimensions						7 List Price †
				Height		Width		Depth		
				Inches	mm	Inches	mm	Inches	mm	
Amalgamated Electric	100-4320	FLCI24A-SE	24	17.50	445	14.25	362	2.75	70	
Amalgamated Electric	4208	FLCI12-D	12	16.00	407	8.38	213	2.75	70	
Amalgamated Electric	4212	FLCI16-D	16	19.38	493	8.38	213	2.75	70	
Amalgamated Electric	4220	FLCI20A-D	20	24.13	613	8.38	213	2.75	70	
Amalgamated Electric	4220	FLCI24A-D	24	24.13	613	8.38	213	2.75	70	
Amalgamated Electric	4216	FLCI20B-D	20	23.00	585	8.38	213	2.75	70	
Amalgamated Electric	4216	FLCI24B-D	24	23.00	585	8.38	213	2.75	70	
Amalgamated Electric	4312	FLCI20B-D	20	23.00	585	8.38	213	2.75	70	
Amalgamated Electric	4312	FLCI24B-D	24	23.00	585	8.38	213	2.75	70	
CEB	NHP10-634	FLCIC16B-D	16	20.00	508	7.75	197	3.00	77	
CEB	NHP10-636-3	FLCIC20B-D	20	24.00	610	10.00	254	3.00	77	
CEB	NHP10-636-3	FLCIC20E-D	20	27.75	705	10.125	257	3.00	77	
CEB	NHP10-636-3	FLCIC24B-D	24	24.00	610	10.00	254	3.00	77	
CEB	NHP12-60	FLCIC12D-D	12	20.00	508	7.75	197	3.00	77	
CEB	NHP12-633	FLCIC20A-D	20	23.00	585	7.75	197	3.00	77	
CEB	NHP12-633	FLCIC24A-D	24	23.00	585	7.75	197	3.00	77	
CEB	NHP4-632	FLCIC12B-D	12	16.13	410	7.75	197	3.00	77	
CEB	NHP4-632-1	FLCIC16-D	16	19.00	483	7.75	197	3.00	77	
CEB	NHP4-633-1	FLCIC16-D	16	19.00	483	7.75	197	3.00	77	
CEB	NHP6-60	FLCIC12C-D	12	13.75	350	7.75	197	3.00	77	
CEB	NHP6-633-1	FLCIC16B-D	16	20.00	508	7.75	197	3.00	77	
CEB	NHP6-636-4	FLCIC16C-D	16	24.00	610	7.75	197	3.00	77	
CEB	NHP8-60	FLCIC12-D	12	16.13	410	7.75	197	3.00	77	
CEB	NHP8-635-2	FLCIC20A-D	20	23.00	585	7.75	197	3.00	77	
CEB	NHP8-635-2	FLCIC24A-D	24	23.00	585	7.75	197	3.00	77	
Taylor (Crouse Hinds)	NHP70-0621-2	✕ FLCIT12A-D	12	24.50	623	9.50	242	3.00	77	
Taylor (Crouse Hinds)	NHP0020	FLCIT8A-D	8	12.75	324	9.50	242	3.00	77	
Taylor (Crouse Hinds)	NHP6-30-60	FLCIT16A-D	16	21.00	534	7.38	188	3.00	77	
Taylor (Crouse Hinds)	NHP1231	FLCIT20A-D	20	24.50	623	9.50	242	3.00	77	
Taylor (Crouse Hinds)	NHP20-0821-6	FLCIT20A-D	20	24.50	623	9.50	242	3.00	77	

** Federal Pioneer FLCI includes Stab-lok distribution section interior, trim, and door.

Custom FLCI units are available. Contact the local Schneider Electric Sales Office for more information.

Catalogue Information is Subject to Change Without Notice.

✕ Main breaker provision.





Loadcentre - Generator Panel

Stab-lok Generator Panel (1 Phase, 3 Wire, 120/240V AC Max.)

Catalogue Number	Bus Rating (A)	Main Breaker Type	List Price †	Main Bus Material	Box Dimensions					
					Height		Width		Depth	
					Inches	mm	Inches	mm	Inches	mm
GP3P30-20	30	NA3P30 Gen Breaker		Copper	17.50	445	13.50	343	3.75	96
GP3P60-20	60	NA3P60 Gen Breaker		Copper	17.50	445	13.50	343	3.75	96
BEGP3P70-44-24	70	NA3P70 Gen Breaker		Copper	44.50	1132	13.50	343	3.75	96

Stab-lok Generator Panel - Replacement Breakers

Catalogue Number	Amp Rating	Main Breaker Type	List Price †
NA3P30GEN	30	NA3P30 Amp Modular Breaker-Transfer Disconnect	
NA3P60GEN	60	NA3P60 Amp Modular Breaker-Transfer Disconnect	
NA3P70GEN	70	NA3P70 Amp Modular Breaker-Transfer Disconnect	



GP3P60-20



BEGP3P70-44-24

Loadcentres - Type 3R Outdoor, Single Phase

Stab-lok Outdoor Type 3R: Main Lugs Loadcentres (1 Phase, 3 Wire, 120/240V AC Max.)

Bus Rating (A)	Catalogue Number	List Price †	Main Wire Size	Main Bus Material	Notes	Box Dimensions					
						Height		Width		Depth	
						Inches	mm	Inches	mm	Inches	mm
60A	RH102-4		14-6 Cu or 12-6 Al	Copper	1, 4, 5	8.50	216	5.75	146	3.38	86
70A	RH104-8		10-4 Cu or 10-2 Al			9.88	251	9.63	244	4.38	111
125 A	RH108-16-125		14-1/0 (Cu/Al)	Copper	1, 2, 4, 5	22.00	559	14.13	359	4.25	108
	RH112-24-125		6-2/0 (Cu/Al)			22.00	559	14.13	359	4.25	108

Stab-lok Outdoor Type 3R: Combination Service Entrance Loadcentres (1 Phase, 3 Wire, 120/240V AC Max.)

Bus Rating (A)	Catalogue Number	List Price †	Main Breaker Type	Main Bus Material	Notes	Box Dimensions					
						Height		Width		Depth	
						Inches	mm	Inches	mm	Inches	mm
125A	RHBE108-16-1C100		1C100	Copper	1, 2, 4, 5, 6	22.00	559	14.13	359	4.25	108
	RHBE112-24-1C100		Factory Installed			22.00	559	14.13	359	4.25	108
200A	RHBE120-40-2C200		2C200 Factory Installed	Copper	1, 2, 3, 4, 5	33.71	857	14.13	359	4.25	108

Notes:

- Enclosures are CSA certified for use with Copper or Aluminum conductors.
- Supplied with hub closing plate only - order hubs from page B-16.
- Price includes 200A factory installed main breaker. 100, 125, 150, 175A main breakers are also available by special factory order. Substitute breaker amp rating at the end of the catalogue number. Ex. RHBE120-40-2C200 to RHBE120-40-2C150 for 150A. Loadcentres will have a two week lead time from factory.
- Enclosures are CSA certified for vertical mounting only.
- Units come with a pad-lockable door/cover.
- Price includes 100A factory installed main breaker. 30, 40, 50, 60, 70, 90 & 125A main breakers are also available by special factory order. Substitute breaker amp rating at the end of the catalogue number. Ex. RHBE108-16-1C100 to RHBE108-16-1C60 for 60A. Loadcentres will have a two week lead time from factory.

Loadcentres - Type 1 Indoor/Type 3R Outdoor, Three Phase



312-24S



BE312-24

Stab-lok Indoor Type 1: Main Lugs Loadcentres (3 Phase, 4 Wire, 120/240V AC Max.)

Bus Rating (A)	Main Breaker (A)	Catalogue Number	List Price ‡	Main Wire Size	Main Bus Material	Notes	Box Dimensions					
							Height		Width		Depth	
							Inches	mm	Inches	mm	Inches	mm
100A	N/A	312-24 S/F		6-2/0 (Cu/Al)	Aluminum	1, 2, 3, 5	25.13	638	13.63	346	5.00	127
225A		318-36 S/F		6-300MCM (Cu/Al)			34.75	873	13.63	346	5.00	127
		330-60 S/F					40.13	1020	13.63	346	5.00	127
		342-84-225 S/F					47.13	1200	13.63	346	5.00	127
400A		342-84-400 S		(2)1/0-500MCM (Cu/Al)			1, 2, 5, 7	51.00	1295	16.13	410	6.00

Stab-lok Indoor Type 1: Combination Service Entrance Loadcentres (3 Phase, 4 Wire, 120/240V AC Max.)

100A	100A	BE312-24		NA 3 Pole 100A Max. Order Separately.	Aluminum	1, 2, 4, 12	26.63	676	13.63	346	4.13	105
		BE318-36					26.63	676	13.63	346	4.13	105
200 A	200A	BE342-84		QDM32200TN Factory Installed	Aluminum	1, 2, 5, 10, 12	47.13	1200	13.63	346	5.00	127

Stab-lok Outdoor Type 3R: Main Lugs Loadcentres (3 Phase, 4 Wire, 120/240V AC Max.)

Bus Rating (A)	Main Breaker (A)	Catalogue Number	List Price ‡	Main Wire Size	Main Bus Material	Notes	Box Dimensions					
							Height		Width		Depth	
							Inches	mm	Inches	mm	Inches	mm
225 A	N/A	RH342-84		6-300MCM (Cu/Al)	Aluminum	1, 3, 6, 8, 9, 11	36.00	899	13.50	337	5.31	133

Stab-lok Outdoor Type 3R: Combination Service Entrance (3 Phase, 4 Wire, 120/240V AC Max.)

100A	100A	RHBE318-36		NA 3 Pole 100A Max. Order Separately.	Aluminum	1, 6, 8, 9, 11	28.25	718	15.50	387	4.63	117
200A	200A	RHBE342-84		QDM32200TN Factory Installed		1, 6, 8, 9, 10, 11	43.50	1086	13.50	337	5.31	133

Notes:

1. CSA certified for use with Copper or Aluminum conductors.
2. Enclosure is CSA certified for horizontal, inverted and vertical mounting.
3. Sub-feed lug kits, refer to page B-16.
4. Door kits, refer to page B-15.
5. Includes a door with a non-lockable latch.
6. Units come with a pad-lockable door/cover.
7. Includes Sub-feed lugs.
8. Supplied with hub closing plate only - order hubs from page B-16.
9. CSA certified for vertical mounting only..
10. Price includes a 200A factory installed main breaker. 100, 125, 150, 175A main breakers are also available by special factory order. Substitute breaker amp rating at the end of the catalogue number. Loadcentres will have a two week lead time from factory. Ex. RHBE342-84 to RHBE342-84-150 for 150A.
11. Unit surface mounts only.
12. Unit comes with a combination Trim Style.



Enclosed Breaker Devices

Stab-lok Enclosed Breaker Devices

Maximum Bus Capacity		Catalogue Number	List Price ‡	Main Wire Size	Main Bus Material	Notes	Box Dimensions					
Cu Wire	Al Wire						Height		Width		Depth	
Indoor Type 1 Enclosed Breaker Devices							Inches	mm	Inches	mm	Inches	mm
30A	20A	100-1 S		14-10(Cu/Al)	Copper	1	5.50	140	2.25	57	2.50	64
60A	60A	102-2 S/F		14-4(Cu) or 12-4(Al)		1,3	7.38	187	4.75	121	2.63	67
100A	100A	13100 S/F		10-1/0(Cu/Al)		1,3,4,6	14.63	371	11.75	298	4.00	102
125A	100A	13125 S/F				1,3,5,6	14.63	371	11.75	298	4.00	102
Outdoor Type 3R Enclosed Breaker Devices							Inches	mm	Inches	mm	Inches	mm
60A	60A	RH102-2		14-4(Cu) or 12-4(Al)	Copper	1,2,3	8.50	216	5.75	146	3.38	86
100A	100A	RH13100		10-1/0(Cu/Al)		1,2,3,4,6	14.75	375	12.13	308	4.88	124
125A	100A	RH13125				1,2,3,5,6	14.75	375	12.13	308	4.88	124

Notes:

- 1) CSA approved for use with Copper or Aluminum conductors.
- 2) Supplied with hub closing plate on top only, order hubs from page B-16.
- 3) CSA approved for Service Entrance Applications.
- 4) Will accept NA2P100 or NA3P100 maximum breaker.
- 5) Will accept NA2P125 or NA3P100 maximum breaker.
- 6) Rated 70A Max. when used with Al Conductor and a 3-pole breaker.



102-2S



RH13100

Recreation Vehicle Park Power Centres

Outdoor Type 3R Recreational Vehicle Park Power Centres (1 Phase, 120/240V AC Max)

Maximum Bus Capacity		Catalogue Number	List Price ‡	Main Wire Size	Main Bus Material	Notes	Mtg.	100A Sub-Feed Provision	Entry	Box Dimensions - Inches (mm)		
Cu	Al									Height	Width	Depth
60A	60A	RH102-4CHTS		14-6(Cu) or 12-6(Al)	Copper	1,2,3, 5,8	S	(1) 1/0 Maximum	T & B	10.125 (258)	7.5 (191)	4.0 (101)
100A	70A	RH104-8CHTS		10-4(Cu) or 10-2(Al)		1,2,3, 4,6,7		None	T & B	15.125 (385)	10.25 (260)	5.0 (127)
		RH104-8CHTS-2				(1) 14 - 2		T & B				

Receptacle Kits

Description		Cat. No.	List Price ‡
Receptacle Kits for RH102-4CHTS			
One 15A 125V duplex with break-off tabs for separate feed. (Eagle #4270B)		K1	
One 30A 125V (Eagle #1263)		K3	
Side blanking plate for RH102-4CHTS units.		RH102-4CHTSBRC	
Receptacle Kits for RH104-8CHTS			
One 15A 125V duplex with break-off tabs for separate feed. (Eagle #4270B)		RM15	
Two 15A 125V duplex with break-off tabs for (Eagle #4270B)		RM15-15	
15A receptacle module kit 1-1 GFI 15A (Hubbell GFR5252)		RM15GFI	
15A receptacle module kit 2-1 GFI 15A (Hubbell GFR5252)		RM15-15GFI	
20A receptacle module kit 2-1 GFI 20A (Leviton 8899)		RM20-20GFI-S	
One 30A 125V (Eagle #1263)		RM30	
One 50A 125/250V (Eagle #58)		RM50	
One 30A 125V and one 15A 125V duplex with break-off tabs for separate feed (Eagle #1263 & #4270B)		RM15-30	
One 30A 125V and one 15A GFI receptacle (Hubbell GFR5252)		RM15GFI-30	
One 125V twist lock 20A (Hubbell #23CM10) 30A (Hubbell #26CM10)		RM20TL RM30TL	
Side blanking plate for RH104-8CHTS using non-twist lock receptacle kits. Side blanking plate for RH104-8CHTS using twist lock receptacle kits.		RM00 RMBLTL	
GFI receptacle module plate minus GFI receptacles		RMGFI-SN	



RH104-8CHTS and RM15-30

B Stab-lok®

Notes:

- Supplied with hub closing plate on top only - order hubs from page B-16
- Has provision to accept 2 receptacle kits and is supplied with 1 receptacle blanking plate. Refer to Receptacle Kits table for kit provision.
- CSA certified to accept copper or aluminum conductors
- Twist lock receptacle mounting plates - RP15TL, RP20TL and RP30TL
- Weather proof cover provided for receptacle kits mounted on the side walls
- Twist lock receptacle kits (RM20TL, RM30TL) cannot be mounted beside other RH104-8CHTS receptacle kits.
- Twist lock blanking plate (RMBLTL) must be ordered when one twist lock receptacle kit is ordered. Twist lock blanking plate is not required when two twist lock receptacle kits are ordered.
- Units come with a pad-lockable cover.
- All receptacle kits are SQD (ASA49) grey.



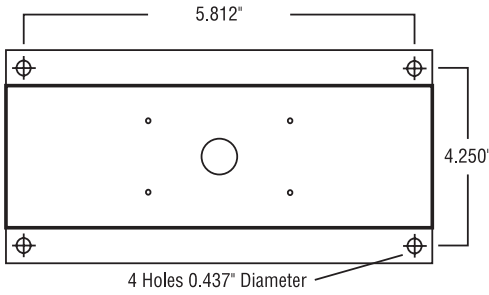
Recreational Vehicle Park Pedestals/Enclosures

Recreational Vehicle Park Pedestal

System	Cat. No.	List Price ‡	Notes	Box Dimensions - Inches (mm)		
				Height	Width	Depth
1 phase	RVPP-2		1	22" (560)	7.375" (187)	3.625" (90)

Notes:

- Supplied with 100A Cu-Al sub-feed lugs (1) #14 to 2/0 max. and 200A Cu-Al feed-through lugs (2) #6 - 250MCM max.



RVPP-2 Base Mounting Dimensions (inches)



RH102-4CHTS Mounted on the RVPP-2

Recreational Vehicle Enclosures (1 Phase, 2 Wire, 120V AC Max.)

Maximum Bus Capacity		Catalogue Number	List Price ‡	Main Bus Material	Box Dimensions - Inches (mm)		
Cu	Al				Height	Width	Depth
50A	50A	RV107 S/F		Copper	9.875 (251)	8.0 (203)	3.0 (76)

Note:

- Not approved for service entrance applications



RV107S

Stab-lok Loadcentre Accessories

Door Kits, 1 Phase, Type 1 Enclosures ONLY

Reference Loadcentre Catalogue Number	Door Kit Catalogue Number	List Price ‡	Std. Package Size
108-16-125	DK1-W98		3
112-24-125	DK2-W98		
116-32-125	DK3-W98		
120-40-125	DK4-W98		
124-48-125	DK5-W98		
132-64-225	DK8-W98		
142-84-225	DK9-W98		
BE108-16-1CXXX	DK1BE-W98		
BE112-24-1CXXX	DK2BE-W98		
BE116-32-1CXXX	DK3BE-W98		
BE120-40-1CXXX	DK4BE-W98		
BE124-48-1CXXX	DK5BE-W98		
BE132-64-1CXXX	DK6BE-W98		
BE120-40-2CXXX	DK7BE-W98		
BE124-48-2CXXX	DK7BE-W98		
BE132-64-2CXXX	DK8BE-W98		
BE142-84-2CXXX	DK9BE-W98		

Note: For use with W98 Series Stab-lok loadcentres.

Stab-lok Replacement Interior Kits

Max. Bus Rating (A)	Interior Kit Catalogue Number	Max. # of NC Spaces	List Price ‡
125 A	108-125INT	16	

Note: For use with W98 Series Stab-lok loadcentres.



DK3-W98



PK6FL

Door Kits, 3 Phase, Type 1 Enclosures ONLY

Reference Loadcentre Catalogue Number	Door Kit Catalogue Number	List Price ‡	Std. Package Size
BE312-24	DK3-W91		5
BE318-36			

Door Lock Kits, 1 Phase, Type 1 Enclosures ONLY

Catalogue Number	List Price ‡	Description
PK6FL		For use with 125 and 225A W98 Series Stab-lok loadcentres.

Main Lug Kits

Max. Bus Rating (A)	Main Lug Kit Catalogue Number	List Price ‡
125A	(1) ML125	
225A	(1) ML225	

Note: For use with W98 Series Stab-lok loadcentre interior. Single phase only.

(1) Obsolete when stock equals zero.

Filler Plates

Catalogue Number	Description	List Price ‡
PF-1	Filler plate for NA or NC breakers. For use in present design of Stab-lok enclosures, except 400 A - see BFAB. Will also fit previous design using 1/2" metal KO's PF-1 consists of 1 strip of 4 1/2" plastic fillers suitable for 4 NC poles or 2 NA poles. Minimum order quantity 25	
BFAB	Filler plate for 1 NA breaker. For use in present 400 A enclosure design and previous enclosure designs using aluminum center strip. Minimum order quantity: 50	



ML125



PF-1



BFAB



Stab-lok Loadcentre Accessories

Sub-Feed Kits, MLO Panels Only

Enclosure Cat. No.	Ordering Catalogue Number	List Price †	Amp Rating (A)	Lug Range
108-16-125	SFL125-W98*		125 A	#6-300MCM
112-24-125				
116-32-125				
120-40-125				
124-48-125				
312-24 S/F	SFL100		100 A	#14-1/0
318-36 S/F	SFL225		225 A	#6-300MCM
330-60 S/F				
342-84-225 S/F				

* For use with 125A W98 Series Stab-lok Loadcentres.

** Sub-feed lugs for 225A W98 Series may be ordered as a factory installed option.



SFL100



GLK12

Drip Proof Hoods EEMAC 2

Enclosure Cat. No.	Ordering Catalogue Number	Std. Package Size	List Price †
102-2S	R2	4	
102-4S			
104-8S	R4	2	
312-24S	SDH	1	
318-36S			
330-60S			
342-84-225S			



SDT



R4

Ground Lug Kits

No. of Ccts	Ordering Catalogue Number	List Price †	Lug Range
3	GLK3		#14 - #4
6	GLK6		
10	GLK10		
12	GLK12		

Neutral Lug Kits

Amp Rating	Ordering Catalogue Number	List Price †	Lug Size
150	NLK150-W98		#6 - 2/0

Note: Suitable for Cu/Al conductors.

Isolated Ground Kits/Neutral Lug Kit

No. of Ccts	Ordering Catalogue Number	List Price †	Lug Range
8	IGLK-8		#14 - #4



IGLK-8



B-150



MH150

Double Tub Kits

Trim Style	Ordering Catalogue Number	List Price †
Surface	SDT	
Flush	FDT	

Note: For use on 225A and 400A Stab-lok loadcentre enclosures

Touch Up Paint

Description	Ordering Catalogue Number	List Price †
Architectural White	ARC-WHITE	
ASA61 Grey	ASA61	

Interchangeable Hubs

Conduit Size	Type B Hubs	Type MH Hubs	List Price †
Closing Plate	BCAP	MHC	
3/4"	B-075	MH75	
1"	B-100	MH100	
1 1/4"	B-125	MH125	
1 1/2"	B-150	MH150	
2"	B-200	MH200	
2 1/2"	B-250	MH250	

Stab-lok Packaging and Shipping Weights

Stab-lok Circuit Breakers - Standard Packaging and Shipping Weights

Type	Pole	Cat. No.	Packages Types					
			Standard		Master		Pallet	
			Units	Weight (lbs)	Units	Weight (lbs)	Units	Weight (lbs)
NC	1	NC015	20	4	120	22	7200	1320
		NC020-NC050	20	4	60	11	7200	1320
	2	NC0215-NC250	10	4	30	12	3600	1440
NA	1	NA15-NA20	10	3	60	18	3600	1080
		NA25-NA50	10	3	30	9	3600	1080
	2	NA215-NA230	5	3	15	9	1800	1080
		NA240-NA250	5	3	30	18	1800	1080
		NA260-NA270	5	3	15	9	1800	1080
		NA2P100-NA2P150	5	4	30	24	—	—
	3	NA3P15-NA3P70	1	1.25	12	15	—	—
		NA3P90-NA3P100	1	1.5	6	8	—	—
NAH	1	NAH15-20	10	3	60	18	—	—
		NAH30-50	10	3	30	9	—	—
	2	NAH215-30	5	3	15	9	—	—
		NAH240-250	5	3	30	18	—	—
		NAH260-270	5	3	15	9	—	—
		NAH2P90-2P100	5	4	30	24	—	—
	3	NAH3P15-70	1	1.25	12	15	—	—
		NAH3P90-100	1	1.25	6	8	—	—
NA (GFI)	1	All amperages	1	0.6	30	17	—	—
	2	All amperages	1	1	6	6	—	—
NA (AFCI)	1	NA15AFI	1	.52	30	17	—	—
		NA20AFI	1	.52	30	17	—	—
1C	2	All amperages	1	1.5	—	—	—	—
2C	2	All amperages	1	6	—	—	—	—
2B	2	All amperages	1	6	—	—	—	—

B Stab-lok®



Stab-lok Packaging and Shipping Weights

Stab-lok Loadcentres - Standard Packaging and Shipping Weights

B Stab-lok®

Enclosure Catalogue Number	Units	Unit Weight (lbs.)	Qty / Pallet	Pallet Weight (lbs.)
100-1S	24	27	1000	1125
102-2 S/F	10	30	500	1500
102-4 S/F	10	29	500	1450
104-8 S/F	5	40	200	1600
108-16-125	1	15	45	675
112-24-125	1	17	45	765
116-32-125	1	17	45	765
120-40-125	1	20	31	620
124-48-125	1	20	31	620
116-32-225	1	22	31	682
120-40-225	1	25	31	775
132-64-225	1	27	29	783
142-84-225	1	36	18	648
142-84-400 S/F	1	87	8	696
312-24 S/F	1	22	28	616
318-36 S/F	1	44	25	1100
330-60 S/F	1	46	25	1150
342-84-225 S/F	1	50	16	800
342-84-400 S	1	87	16	1392

BE108-16-1CXXX	1	18	45	810
BE112-24-1CXXX	1	21	45	945
BE116-32-1CXXX	1	21	45	945
BE120-40-1CXXX	1	22	31	682
BE120-40-2CXXX	1	28	31	868
BE124-48-1CXXX	1	24	31	744
BE124-48-2CXXX	1	28	31	868
BE132-64-1CXXX	1	24	27	648
BE132-64-2CXXX	1	30	29	870
BE142-84-2CXXX	1	40	18	720
BE312-24	1	24	31	744
BE318-36	1	27	31	837
BE342-84	1	57	16	912
FP1024	1	24	45	1080
FP1032	1	24	45	1080
FP1048	1	28	31	868
FP1064	1	28	27	756
FP1232	1	24	45	1080
FP1248	1	26	31	806
FP2040	1	34	31	1054
FP2040Q	1	36	31	1116
FP2064	1	38	29	1102
FP2064Q	1	38	29	1102
FP2048	1	32	31	992
FP2084	1	44	18	792
FP2084Q	1	48	18	864