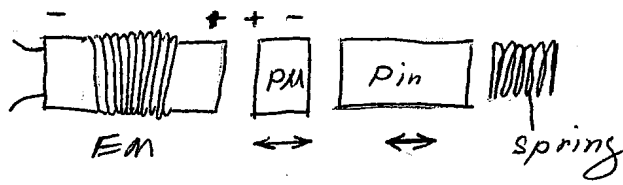
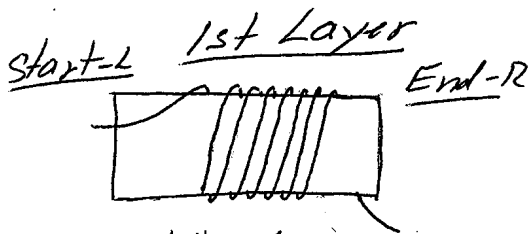


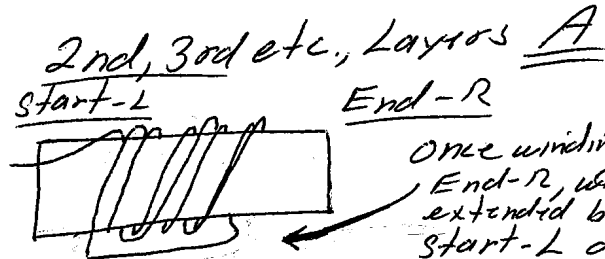
A B C D



2)

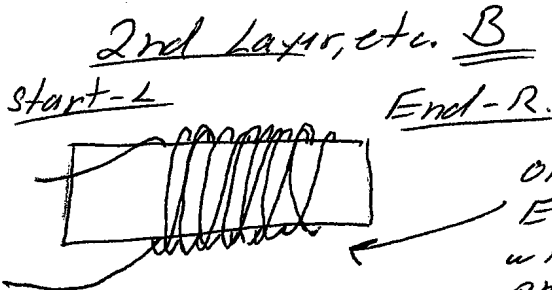


Right Hand Turns
w/ Top of winding
slanted to End-R



Right Hand Turns
w/ Top of winding
slanted to End-R.

Once winding reaches
End-R, wire is
extended back to
Start-L directly,
then next layers
are wound w/
same handedness
and slant as
previous layers.



Right Hand Turns
w/ Top of winding
slanted to End-R.

Once winding reaches
End-R, wire is "back-tracked"
with same handedness and slant of
previous layers, from End-R back
to Start-L. Then repeated from
Start-L to End-R, then back-tracked
to Start-L, for each layer.