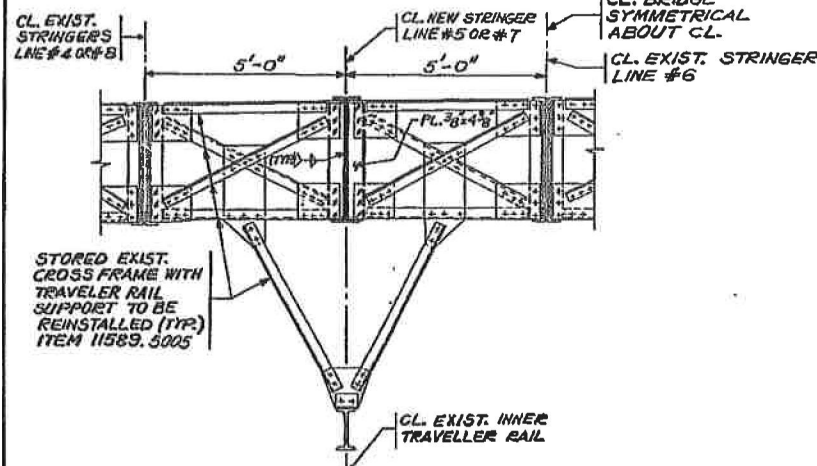
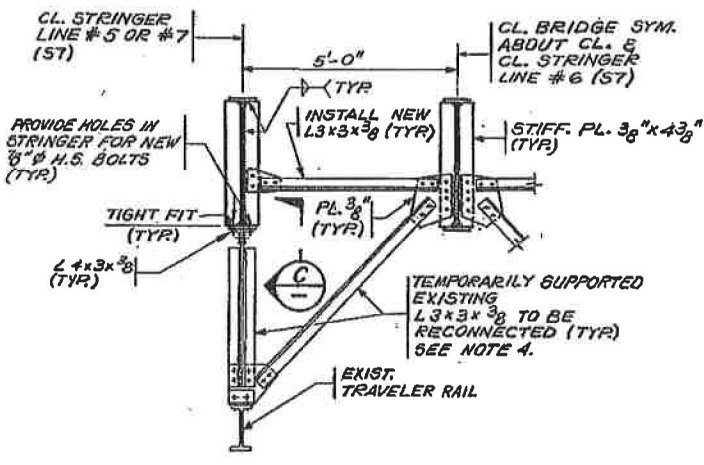


PART ELEVATION OF INNER TRAVELER RAIL (TYR)
SCALE: 1/4" = 1'-0"

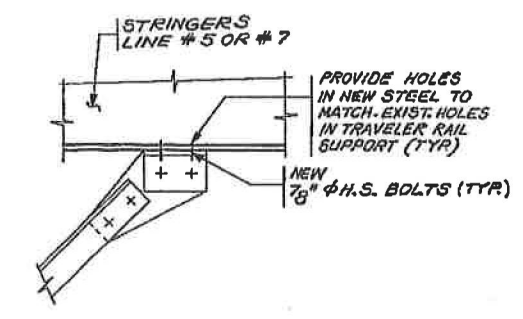
- NOTES:**
1. FOR GENERAL NOTES AND LEGEND, SEE DWG. NOS. 6-6, 6-7 AND 6-8.
 2. STORED EXISTING CROSSFRAME TO BE REINSTALLED WITH NEW STRINGERS UNDER ITEM 11589.5005.
 3. ALL NEW STEEL SHOWN ON THIS DRAWING SHALL BE PAID UNDER ITEM 564.5101 UNLESS OTHERWISE NOTED.
 4. THE COST OF RECONNECTING EXISTING TRAVELLER RAIL HANGERS TO NEW STRINGERS SHALL BE INCLUDED IN THE UNIT PRICE BID FOR THE NEW STRINGERS.
 5. THE CONTRACTOR SHALL ENSURE THE EXISTING TRAVELER RAIL PROFILE IS MAINTAINED AT ALL LOCATIONS WHILE REINSTALLING THE STORED CROSSFRAMES AND RECONNECTING THE TEMPORARILY SUPPORTED RAIL SUPPORT MEMBERS. ANY DEVIATION IN TRAVELER RAIL PROFILE SHALL BE CORRECTED TO THE SATISFACTION OF THE ENGINEER AT NO EXTRA COST TO THE STATE.



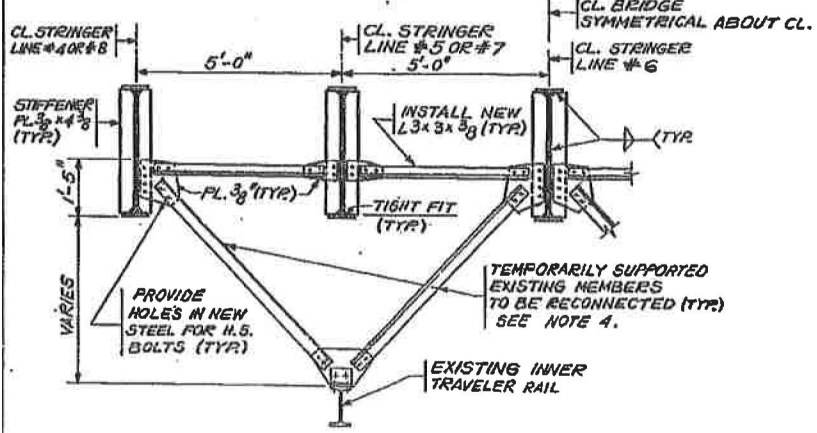
SECTION D TYP. INTERMEDIATE RAIL SUPPORT



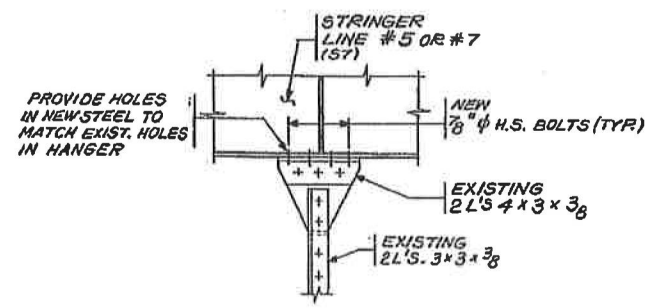
SECTION A
SCALE: 1/2" = 1'-0"



DETAIL I (TYR)
SCALE: 1 1/2" = 1'-0"



SECTION B
SCALE: 1/2" = 1'-0"



SECTION C
SCALE: 1" = 1'-0"

MAIN BRIDGE STRINGER CONNECTION DETAILS AT TRAVELER RAILS