

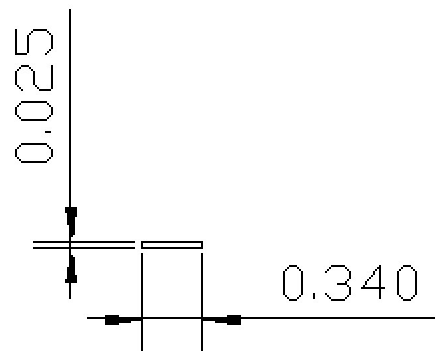
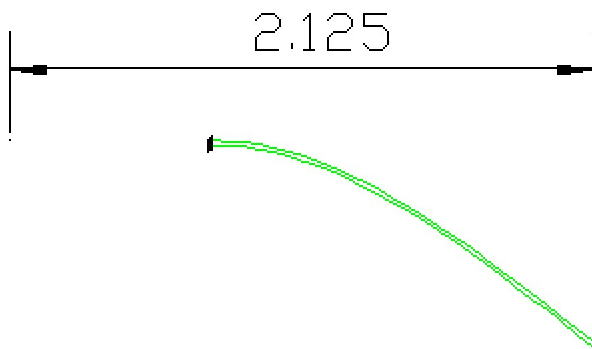
Cantilever Beam Spring, Rectangular Cross Section **Material:** High Carbon 1095 A

Beam Length [in]	2.125	Load at Free End [lbf]	4.671	Stress at Fixed End [psi]	280277
Beam Width [in]	0.34	% of Tensile Str.	124.6		
Beam Thickness [in]	0.025	Deflection at Load [in]	1.125		
Thickness Tolerance [in]	+/- 0.00075	Deflection to Set [in]	0.6322	Allowable % of Tens Str.	70
		*Max. Allow. Load [lbf]	2.625		
Spring Rate [lbf/in]	4.152	<i>*Maximum load at which stress is an acceptable % of tensile strength</i>			

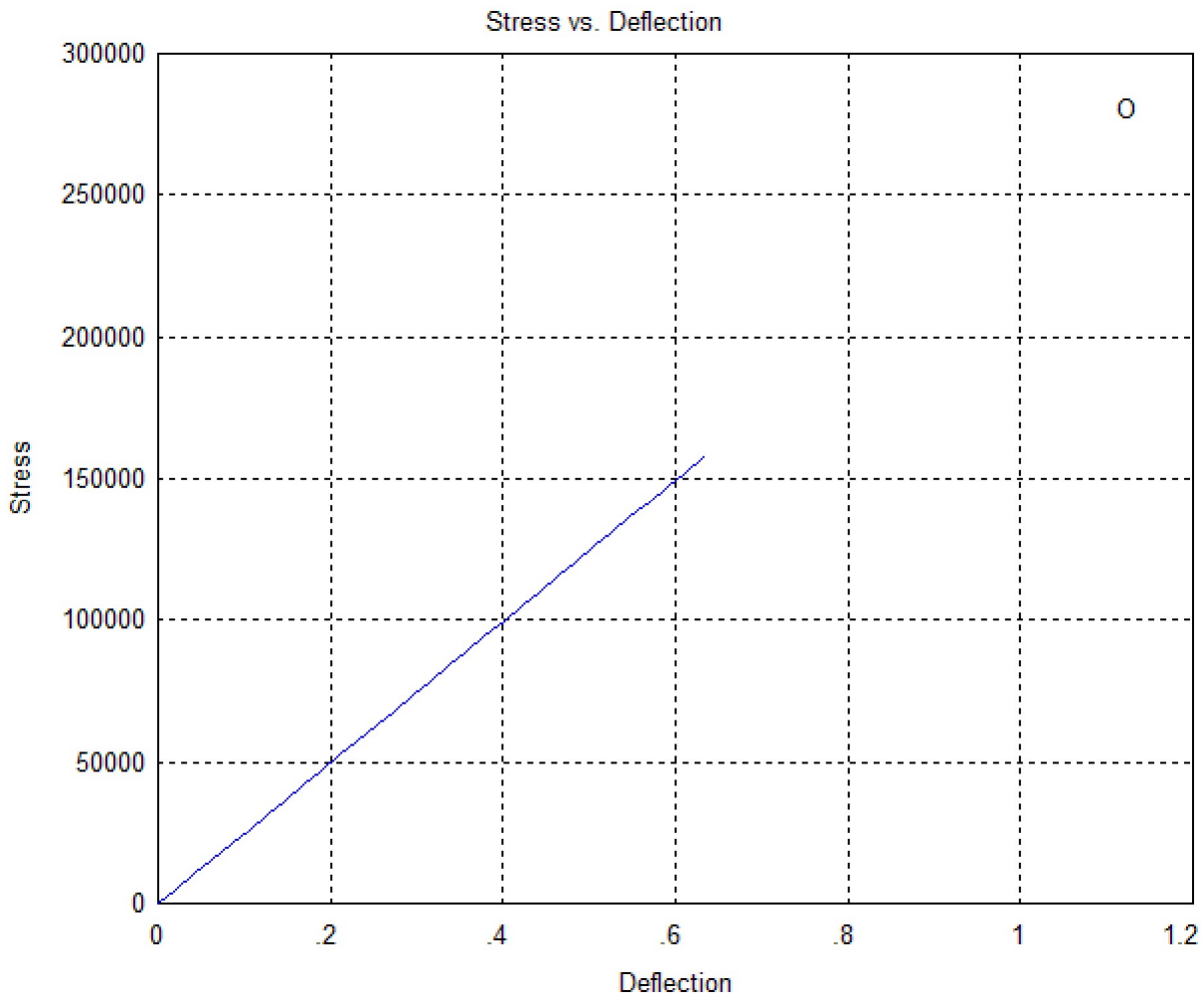
Design Status:

Spring May Set.
 Excessive Load and Deflection.
 Caution: Deflection/Length => 0.3
 Large Deflection at Max. Load.

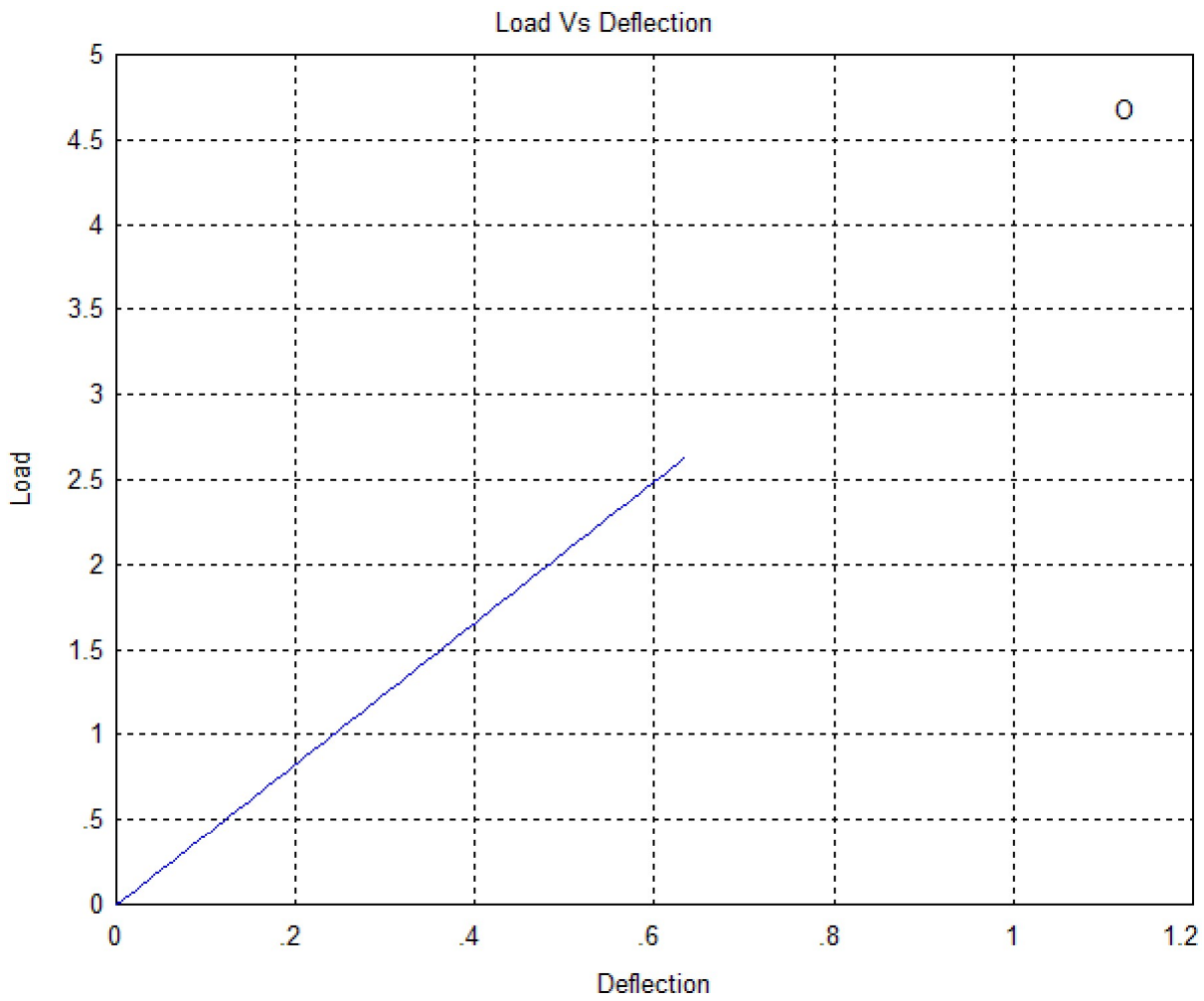
DXF Drawing:



Stress vs. Deflection



Load Vs Deflection



Stress vs. Load

