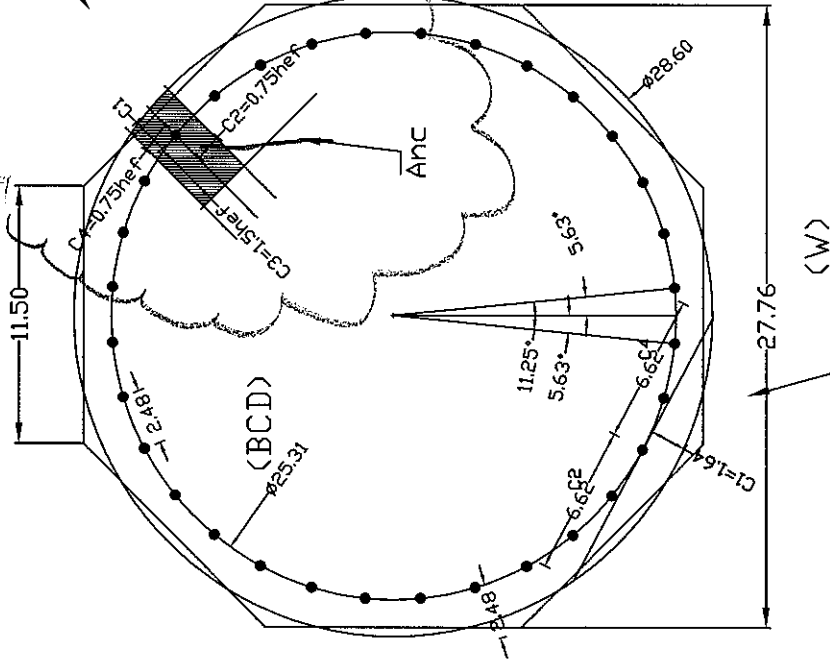


38-T-201

ANCHOR BOLT DESIGN

EDGE DIMENSIONS FOR TENSION
ASSUMED # OF ANCHORS IN TENSION = 1



hef = embedment length = 36" = 3'

$$C1 = (W * BCD) / 2 =$$

$$C2 = C4 = (PI) * BCD / n = \neq 0$$

$$Anc = (1.5 * hef + C1) * (C2 + C3 + C4) =$$

Conservatively use bolt spacings
of 0.75hef

EDGE DIMENSIONS FOR SHEAR
(PIPSTE-0251 / 2003 P A-6)

BY : CHANDRA 03-03-2008
CHK: