

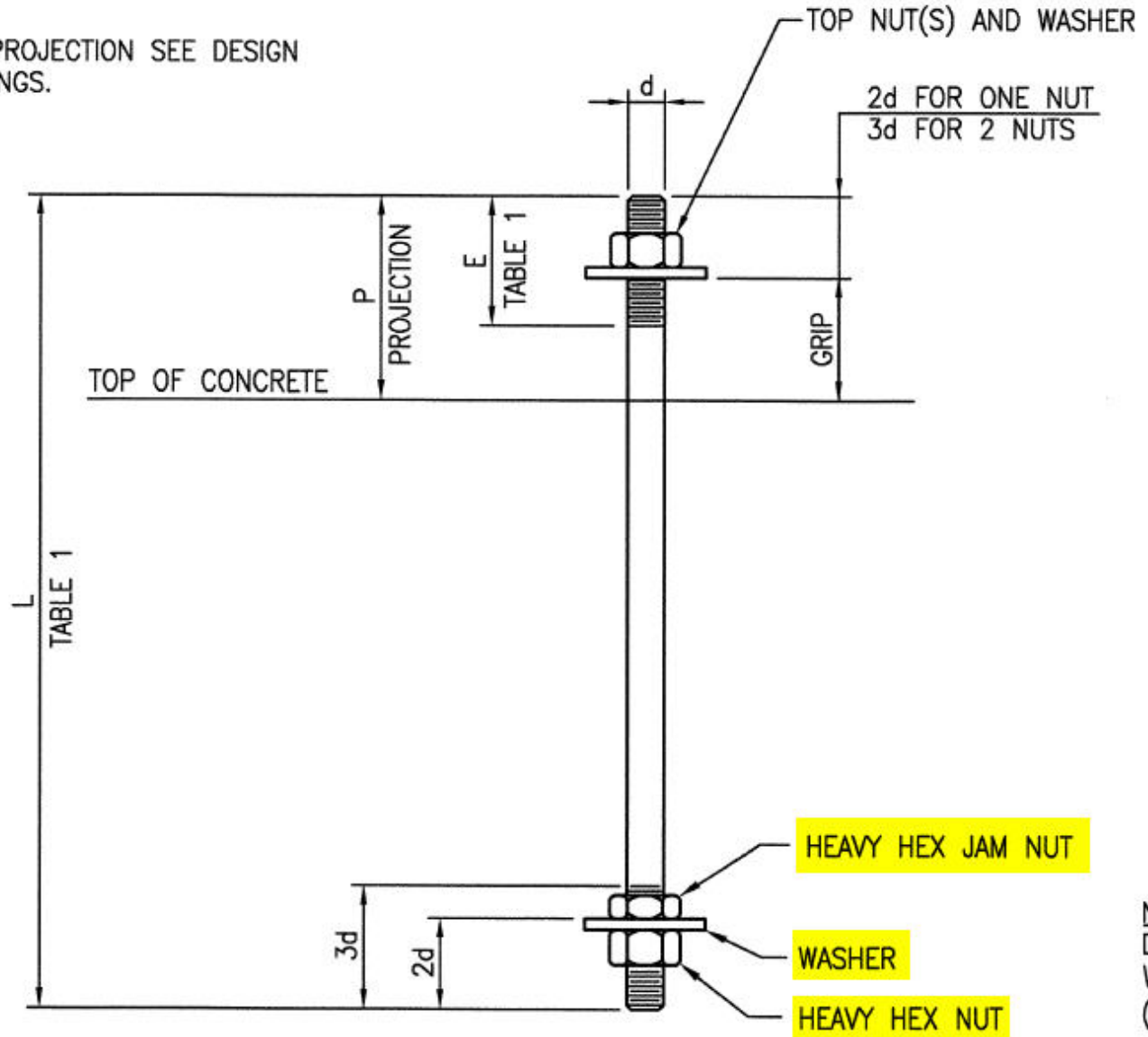
Anchor Bolt Design per ACI 318-11

Crane Beam Design

CivilBay

www.civilbay.com

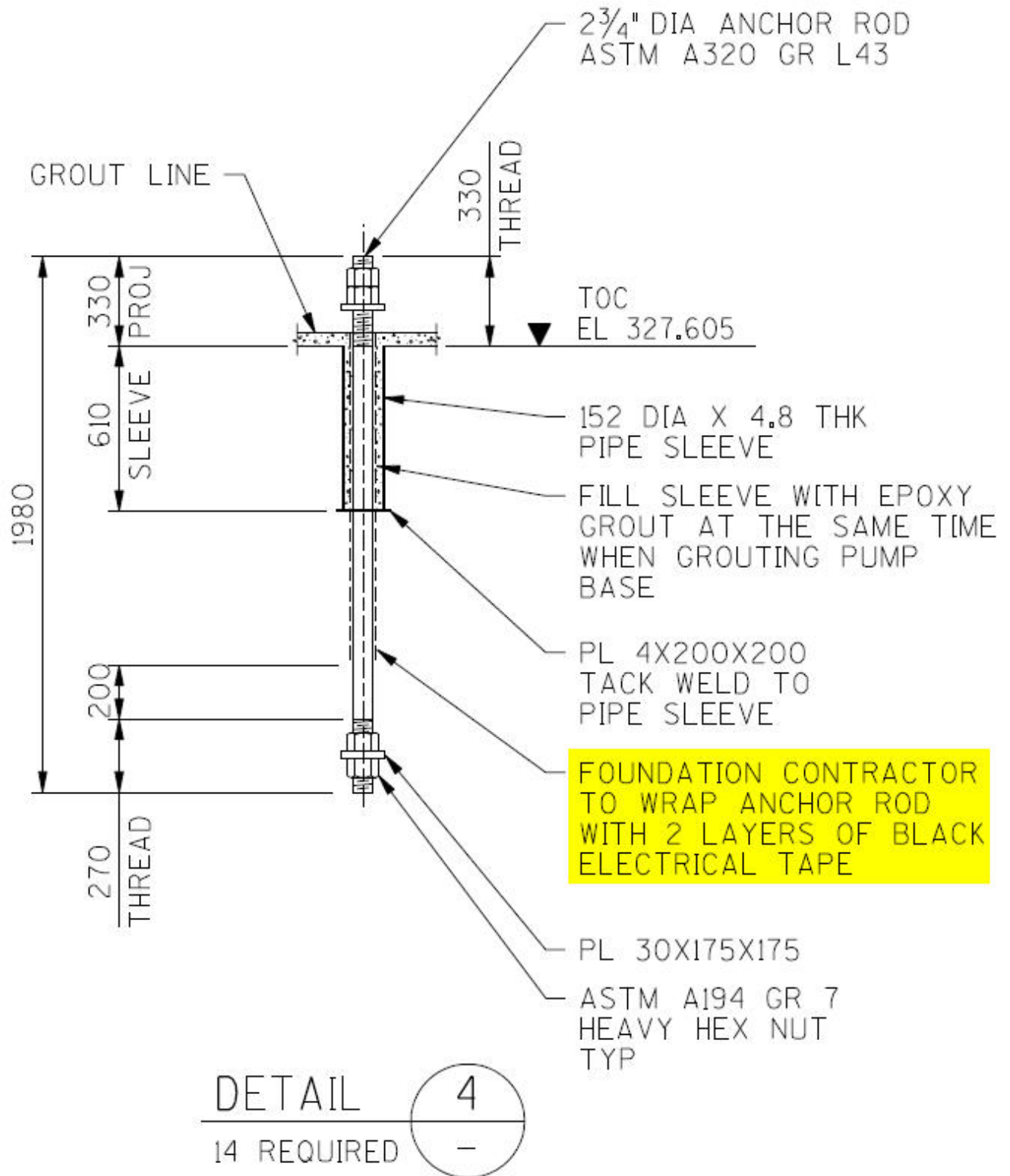
PROJECTION SEE DESIGN WINGS.



NOTE:
DO N
WASH
(SEE

TYPE 1 (SEE NOTE D3)

Below is one of my recent design of anchor bolt for 2500HP rotating pump. I tape wrapped almost the full length of anchor rod up to the bottom. The anchor rod will be pretensioned as per pump vendor's requirement.



Anchor Bolt Design per ACI 318-11

Crane Beam Design

CivilBay

www.civilbay.com

From ACI 318-11

CODE

COMMENTARY

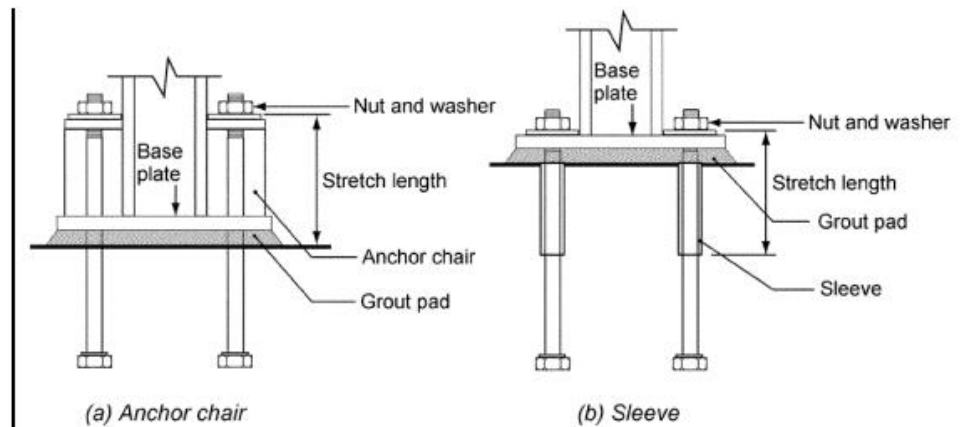


Fig. RD.1.3—Illustrations of stretch length (see D.3.3.4.3(a)).

Stretch length — Length of anchor, extending beyond concrete in which it is anchored, subject to full tensile load applied to anchor, and for which cross-sectional area is minimum and constant.

Stretch length — Length of an anchor over which inelastic elongations are designed to occur for earthquake loadings. Examples illustrating stretch length are shown in Fig. RD.1.3.

Anchor Bolt Design per ACI 318-11

Crane Beam Design

CivilBay

www.civilbay.com

CODE

D.3.3.4.3 — Anchors and their attachments shall satisfy one of options (a) through (d):

(a) For single anchors, the concrete-governed strength shall be greater than the steel strength of the anchor. For anchor groups, the ratio of the tensile load on the most highly stressed anchor to the steel strength of that anchor shall be equal to or greater than the ratio of the tensile load on tension-loaded anchors to the concrete-governed strength of those anchors. In each case:

1. The steel strength shall be taken as 1.2 times the nominal steel strength of the anchor.
2. The concrete-governed strength shall be taken as the nominal strength considering pullout, side-face blowout, concrete breakout, and bond strength as applicable. For consideration of pullout in groups, the ratio shall be calculated for the most highly stressed anchor.

In addition, the following shall be satisfied:

3. Anchors shall transmit tensile loads via a ductile steel element with a stretch length of at least eight anchor diameters unless otherwise determined by analysis.

COMMENTARY

RD.3.3.4.3 — Four options are provided for determining the required anchor or attachment strength to protect against nonductile tension failure:

In option (a), anchor ductility requirements are imposed and the required anchor strength is that determined using strength-level earthquake forces acting on the structure. Research^{D.7,D.8} has shown that if the steel of the anchor yields before the concrete anchorage fails, no reduction in the anchor tensile strength is needed for earthquake loadings. Ductile steel anchors should satisfy the definition for ductile steel elements in D.1. To facilitate comparison between steel strength, which is based on the most highly-stressed anchor, and concrete strength based on group behavior, the design is performed on the basis of the ratio of applied load to strength for the steel and concrete, respectively.

For some structures, anchors provide the best locations for energy dissipation in the nonlinear range of response. The stretch length of the anchor affects the lateral displacement capacity of the structure and therefore that length needs to be sufficient such that the displacement associated with the design-basis earthquake can be achieved.^{D.9} Observations from earthquakes indicate that the provision of a stretch length of eight anchor diameters results in good structural performance. Where the required stretch length is calculated, the relative stiffness of the connected elements needs to be

Anchor Bolt Design per ACI 318-11

Crane Beam Design

CivilBay

www.civilbay.com