

PIPE LINE ERECTION DIAGRAM

SHOP MATERIAL				
Pos.	SIZE	ITEM CODE	DESCRIPTION	QTY
1	10	P_1D102L-0	PIPE, CS, SMLS, ASTM A106-B S-120	0.739'
2	8	P_1D102L-0	PIPE, CS, SMLS, ASTM A106-B S-120	53.208
3	10XB	RC_1E101L-L	REDUCER (CONC) WELD CS, ASTM A234-WPB-S, ANSI B16.9 S-120 X S-120	1
4	10	E4_1E101L-0	45 ELL. WELD CS, ASTM A234-WPB-S, ANSI B16.9 S-120	1
5	8	E9_1E101L-0	90 ELL. WELD CS, ASTM A234-WPB-S, ANSI B16.9 S-120	3
6	8	E4_1E101L-0	45 ELL. WELD CS, ASTM A234-WPB-S, ANSI B16.9 S-120	1

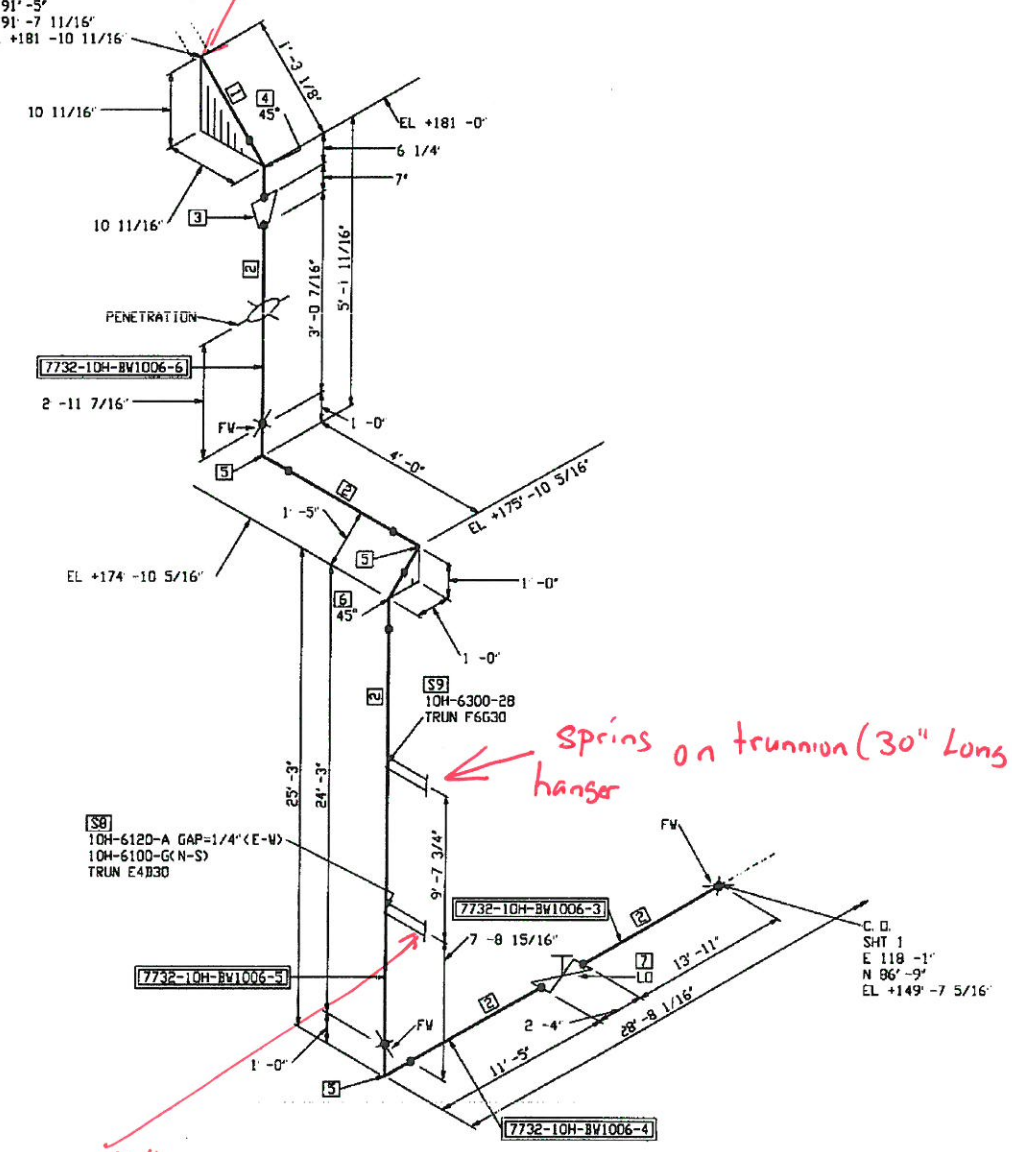
FIELD MATERIAL				
Pos.	SIZE	ITEM CODE	DESCRIPTION	QTY
7	8	YG_VCFUZAMW	GATE, 1500 LB WELD CS BODY W/ 13CR TRIM, H ST, PSB S-120	1

SUPPORTS				
Pos.	SIZE	ITEM CODE	DESCRIPTION	QTY
8	8	TUP	TRUNNION PER MWK STD. N26-2TS, TYPE E4D 30 LONG	1
9	8	TUP	TRUNNION PER MWK STD. N26-2TS, TYPE F6G 30 LONG	1



CONN. TO
NOZZLE W
ITEM 101-F
10" SCH 80
E 91'-5"
N 91'-7 11/16"
EL +181 -10 11/16"

Anchor (Steam Vessel)



Line stop + 1/4" gap on trunnion (30" Long 4" sch. 40 + no repad)

NOTES

APPROVED FOR
CONSTRUCTION

Ref. Dwg. 610-H-D4

PIPE SPECIFICATION DATA										
NPS	SPEC CLASS	DESIGN PRESS	TEMPERATURES			INSULATION TYPE	INSULATION THICK	PAINT CODE	NO.	REVISIONS
			DESIGN	FLEX	OPER					
3/4"	1351	2190	625	625	625	1	3	U		
6"	1351	2190	625	625	625	1	3	U		
10"	1351	2190	625	625	625	1	3	U		

DESIGNED	FLOW SHEET	NO.
	64-D101	
DESIGNED BY	DESIGN FILE UPDATED	
SUPPL.	JOB NUMBER	DRAWING NUMBER
	7732 -	10-H-BW-1006
JOB LEADER	ISSUED FAB	ISSUED CONSTR.
D/A REV.		
		2 of 2 PD

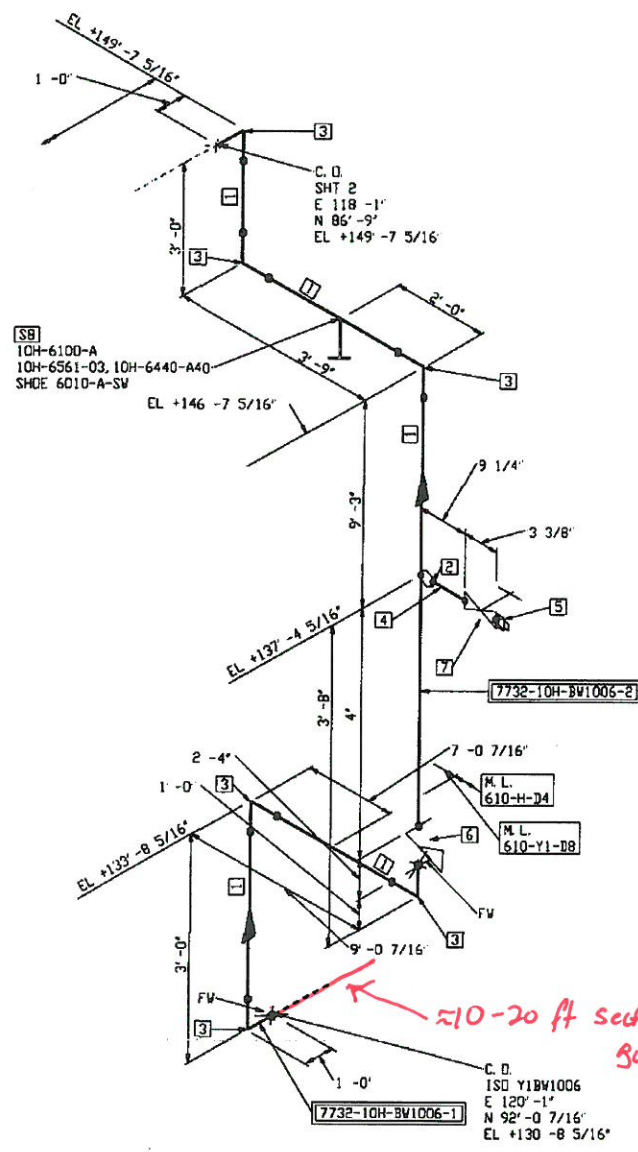
MECHA: [unclear]
NO DEL(S): [unclear]
EXTRACTION DATE: [unclear]

PIPE LINE ERECTION DIAGRAM

SHOP MATERIAL				
Pos.	SIZE	ITEM CODE	DESCRIPTION	QTY
1	B	P_1D102L-0	PIPE, CS, SMLS, ASTM A106-B S-120	19.369'
2	8X3/4	WK_180030-K	WELD, 6000 LB WELD CS, ASTM A105, MSS SP-97	1
3	B	E9_1E101L-0	90 ELL, WELD CS, ASTM A234-WP8-S ANSI B16.9 S-120	6

FIELD MATERIAL				
Pos.	SIZE	ITEM CODE	DESCRIPTION	QTY
4	3/4	N6_1D101P-0	PIPE NIPPLE, CS, SMLS, ASTM A106-B S-160 ENDS=BE X BE LENGTH= 4"	1
5	3/4	FR_180040-0	PLUG, THRD CS, ASTM A105, ROUND HEAD, ANSI B16.11	1
6	B	VC_VRFJ2AYD	CHECK, 1500 LB WELD CS BODY W/ 13CR TRIM HF ST, TILT, H/V, PSC S-120	1
7	3/4	VG_VFGZAB7	GATE, 1500 LB T/SW CS BODY W/ 13CR TRIM HF ST	1

SUPPORTS				
Pos.	SIZE	ITEM CODE	DESCRIPTION	QTY
8	B	PSM	SHOE PER HWK STD 6010-A-SW	1



EXTRACTION DATE: _____

NOTES

APPROVED FOR CONSTRUCTION

Ref. Dwg. 610-H-D4

LINE SEGMENT DATA										REVISIONS					
HPS	SPEC CLASS	DESIGN PRESS	DESIGN TEMP	TEMPERATURES			INSULATION		PAINT CODE	NO.	CHK	S.CK	APP'D	MECH	DATE
				DESIGN	OPER	TRK	TYPE	THICK							
3/4"	1301	2190	625	625	625	1	3	3	U						
8"	1301	2190	625	625	625	1	3	3	U						
10"	1301	2190	625	625	625	1	3	3	V						

DESIGNER	FLOW SHEET	NUMBER	DRAWING NUMBER	SHT	REV
F/S REV.	64-D101				
SUPPLY	DESIGN FILE UPDATED				
JOB LEADER	ISSUED FAB	ISSUED CONSTR.			
O/A REV.					

732	-	10-H-BW-1006	1	2	PO
-----	---	--------------	---	---	----