

Fenner Gen	Date	Issue	Sheet No.	Status	Ref No.
	March 2009	1 (BB)	1 of 2	Open	TL/11

## Taper Lock® Hub Boring

The details below are given in order to allow the manufacture of hubs to suit Fenner® Taper Lock® Bushes.

**IMPORTANT:** They are not valid if used with any other make of Bush.

It is important that the required accuracy of tolerances is maintained on every bore manufactured in order to ensure the correct operation of the Bush/Component Assembly.

The diameter from which the Taper Bore is to be machined must be concentric with the pitch circle diameter of the screws. It is normally necessary to produce a tooling bore from the final chucking diameter or to locate for drilling from this diameter.

Turn one face and tooling bore.

Turn second face parallel to the first face.

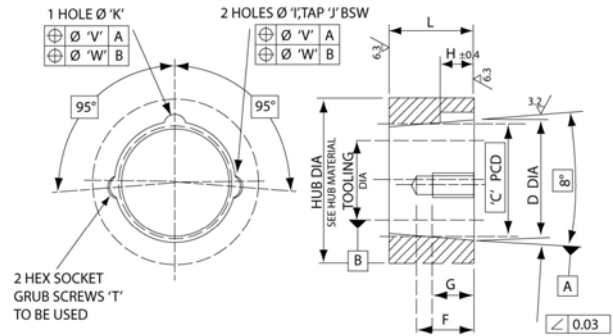
Drill and tap holes.

Locate from datum diameter and Taper Bore.

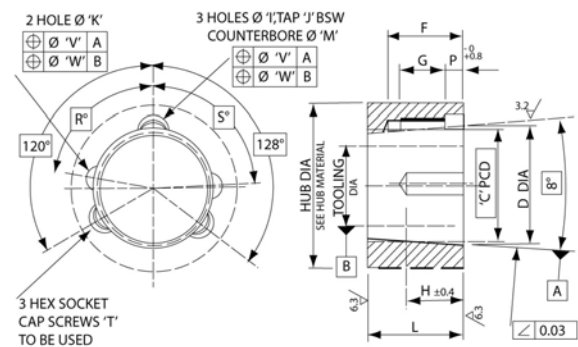
Details contained in this sheet are subject to change without prior notification.

Certified copies of individual hub boring details are available.

### 1008 TO 3030 TAPER LOCK HUBS



### 3525 TO 5050 TAPER LOCK HUBS



Bush Size	C	D	F	G	H	I	J	K	L	M	P	R	S	T	V	W			
1008	33.75	35.03	35.10	22	16	12	5.13	5.28	1/4"	6.73	6.88	22	-	-	-	-	1/4" x 1/2"	0.23	0.15
1108	36.91	38.20	38.28	22	16	12	5.13	5.28	1/4"	6.73	6.88	22	-	-	-	-	1/4" x 1/2"	0.23	0.15
1210	44.45	47.50	47.60	25	22	16	7.92	8.08	3/8"	9.91	10.06	25	-	-	-	-	3/8" x 5/8"	0.23	0.15
1215*	44.45	47.50	47.60	38	30	16	7.92	8.08	3/8"	9.91	10.06	38	-	-	-	-	3/8" x 5/8"	0.23	0.15
1310*	47.63	50.70	50.80	25	22	16	7.92	8.08	3/8"	9.91	10.06	25	-	-	-	-	3/8" x 5/8"	0.23	0.15
1315*	47.63	50.70	50.80	38	30	16	7.92	8.08	3/8"	9.91	10.06	38	-	-	-	-	3/8" x 5/8"	0.23	0.15
1610	53.97	57.02	57.13	25	22	16	7.92	8.08	3/8"	9.91	10.06	25	-	-	-	-	3/8" x 5/8"	0.23	0.15
1615	53.97	57.02	57.13	38	30	16	7.92	8.08	3/8"	9.91	10.06	38	-	-	-	-	3/8" x 5/8"	0.23	0.15
2012	66.67	69.72	69.83	32	25	20	9.09	9.25	7/16"	11.48	11.63	32	-	-	-	-	7/16" x 7/8"	0.23	0.15
2017*	66.67	69.72	69.83	45	32	20	9.09	9.25	7/16"	11.48	11.63	45	-	-	-	-	7/16" x 7/8"	0.23	0.15
2517	82.55	85.60	85.70	45	30	24	10.69	10.85	1/2"	13.08	13.23	45	-	-	-	-	1/2" x 1"	0.23	0.15
2525*	82.55	85.60	85.70	45	30	24	10.69	10.85	1/2"	13.08	13.23	63	-	-	-	-	1/2" x 1"	0.23	0.15
3020	101.60	107.82	107.93	51	37	30	13.46	13.61	5/8"	16.26	16.41	51	-	-	-	-	5/8" x 1 1/4"	0.23	0.15
3030	101.60	107.82	107.93	52	37	30	13.45	13.61	5/8"	16.26	16.41	76	-	-	-	-	5/8" x 1 1/4"	0.23	0.15
3525	122.55	126.75	126.85	65	37	41	10.69	10.85	1/2"	13.08	13.23	65	20	19	80°	88°	1/2" x 1 1/2"	0.23	0.15
3535	122.55	126.75	126.85	71	37	41	10.69	10.85	1/2"	13.08	13.23	89	20	19	80°	88°	1/2" x 1 1/2"	0.23	0.15
4030	140.71	145.80	145.90	76	43	48	13.46	13.61	5/8"	16.26	16.41	76	23	22	80°	88°	5/8" x 1 3/4"	0.23	0.15
4040	140.71	145.80	145.90	81	43	48	13.46	13.61	5/8"	16.26	16.41	102	23	22	80°	88°	5/8" x 1 3/4"	0.23	0.15
4535	155.70	161.67	161.77	89	49	54	16.64	16.79	3/4"	19.46	19.61	89	26	25	80°	88°	3/4" x 2"	0.23	0.15
4545	155.70	161.67	161.77	94	49	54	16.64	16.79	3/4"	19.46	19.61	114	26	25	80°	88°	3/4" x 2"	0.23	0.15
5040	170.68	177.55	177.65	102	56	60	19.43	19.58	7/8"	22.61	22.76	102	30	29	83°	91°	7/8" x 2 1/4"	0.23	0.15
5050	170.68	177.55	177.65	103	56	60	19.43	19.58	7/8"	22.61	22.76	127	30	29	83°	91°	7/8" x 2 1/4"	0.23	0.15

Dimensions in millimetres unless otherwise stated.

\* Non-preferred sizes

