

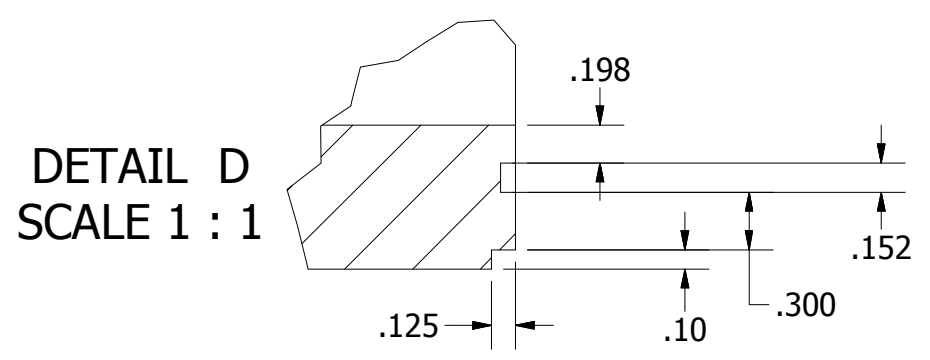
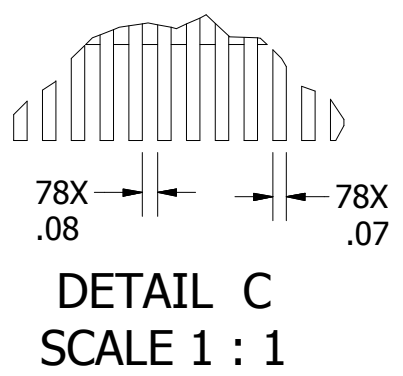
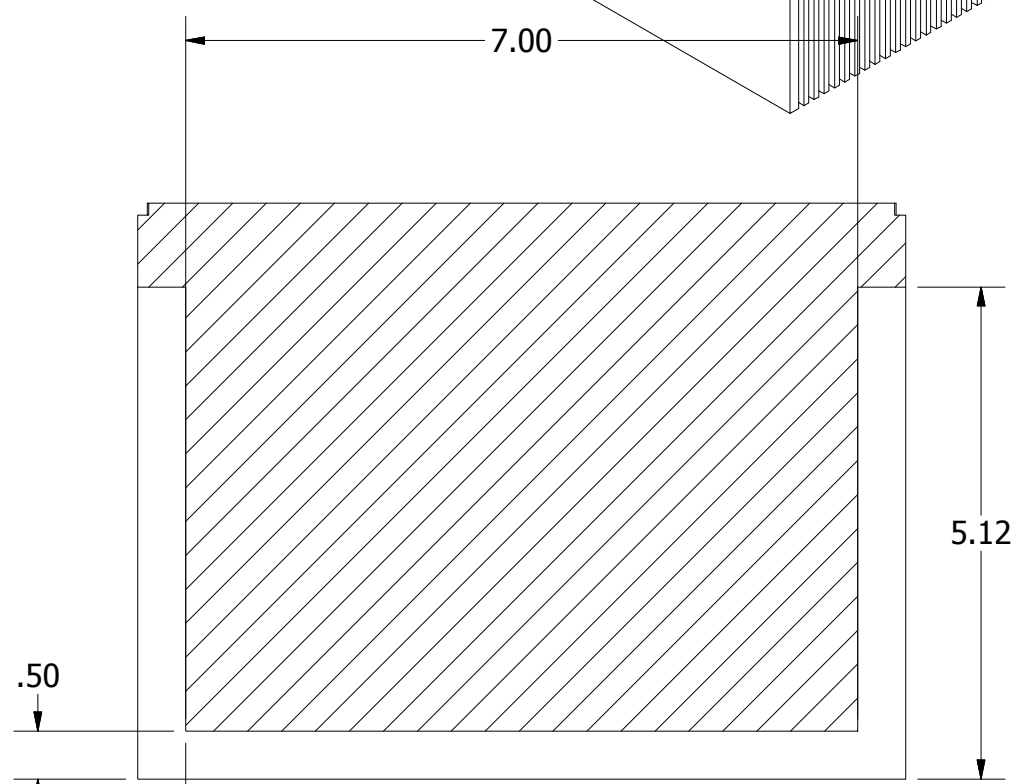
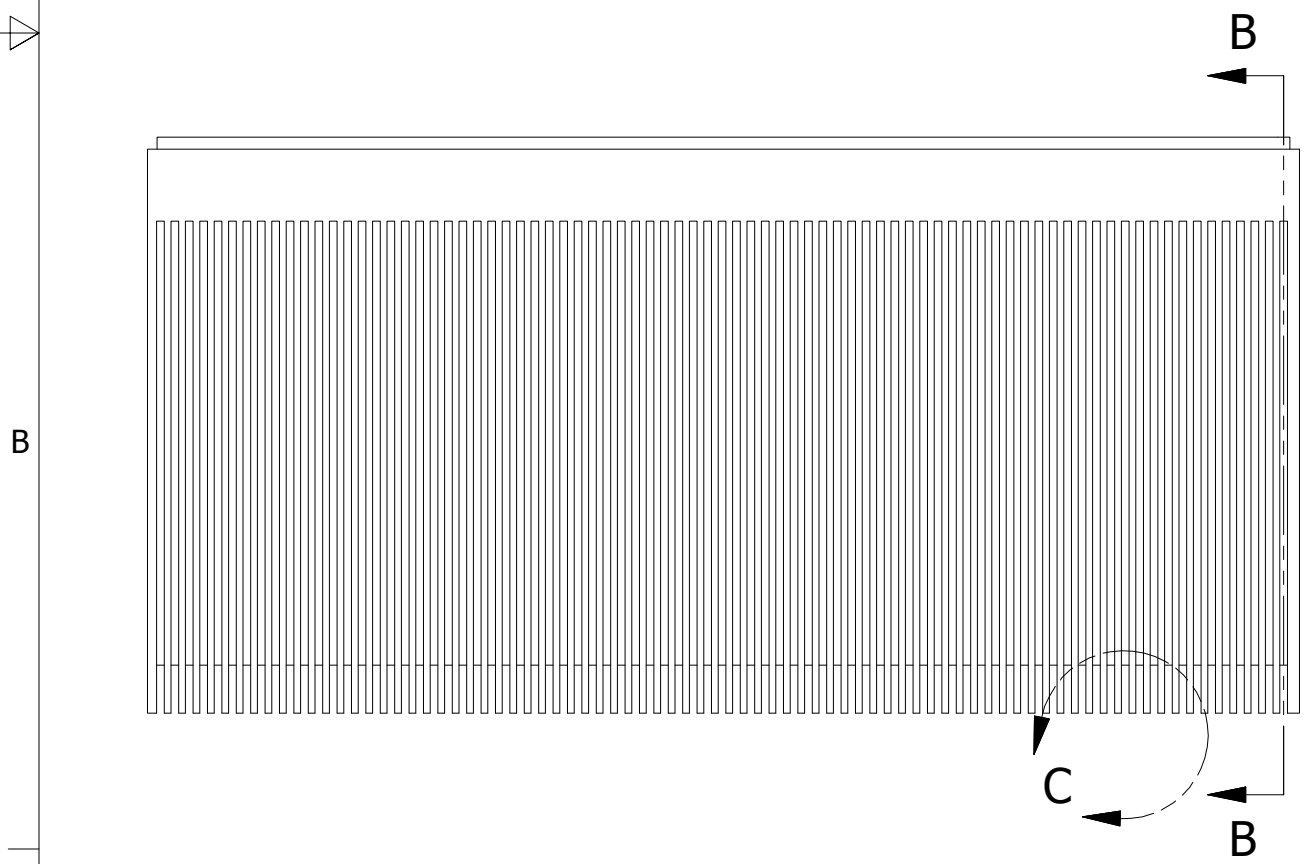
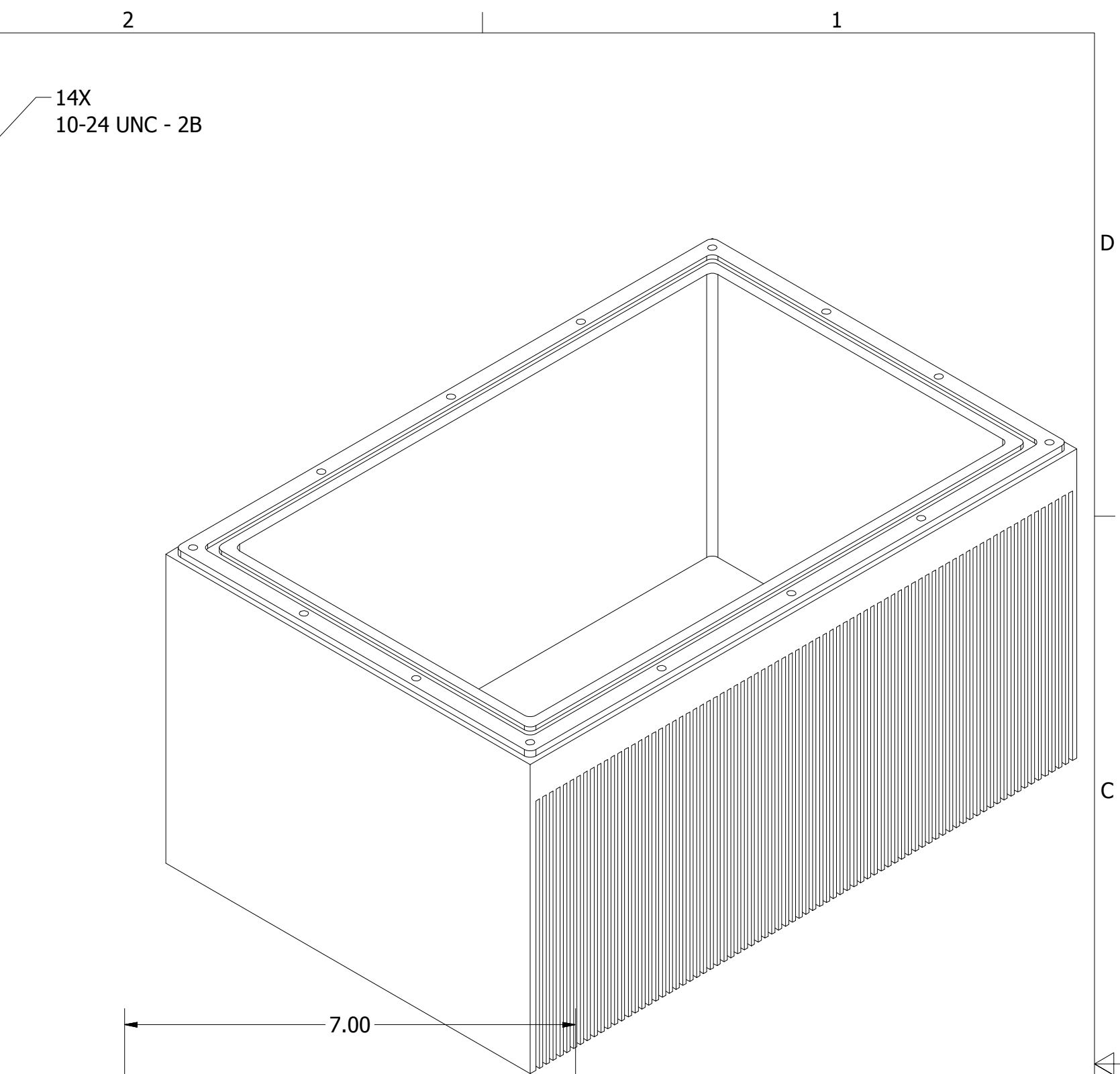
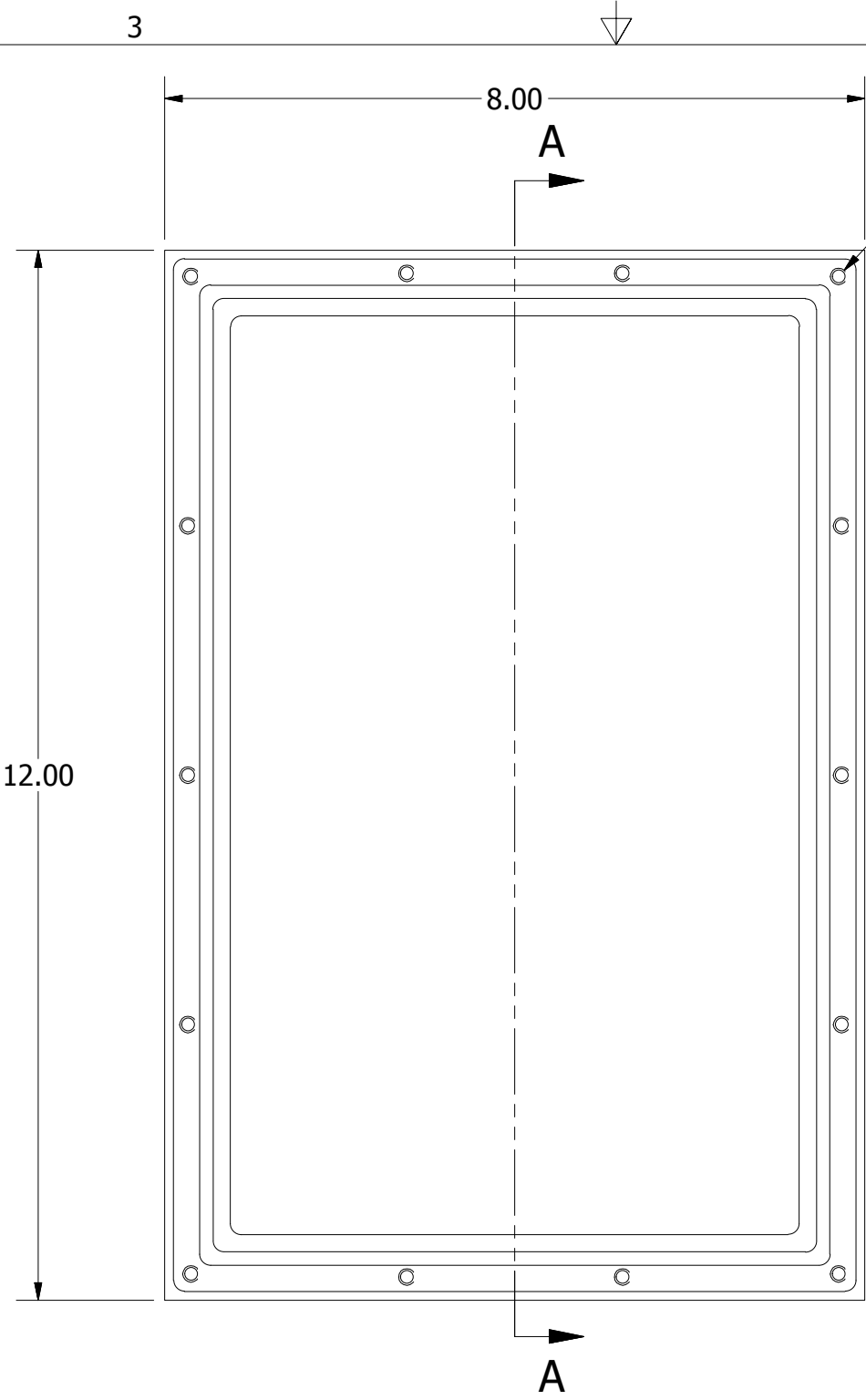
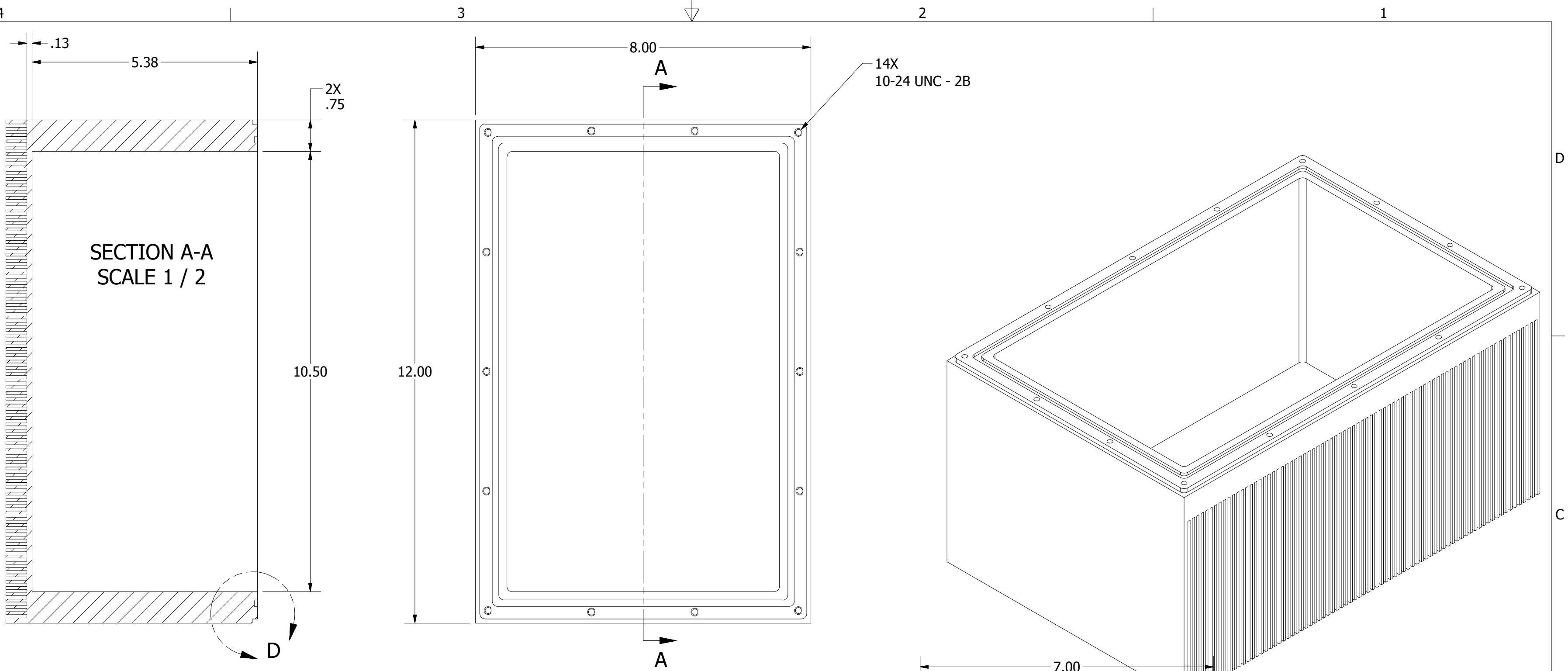
HOLE TABLE			
HOLE	XDIM	YDIM	DESCRIPTION
B1	4.18	3.80	Ø1.18 THRU
B2	6.14	3.80	Ø1.18 THRU
C1	8.56	3.80	Ø.71 THRU
D1	9.70	3.80	Ø.43 THRU
A1	3.15	.27	Ø.15 THRU └┘ Ø.28 ▽ .38
A2	6.00	.27	Ø.15 THRU └┘ Ø.28 ▽ .38
A3	8.85	.27	Ø.15 THRU └┘ Ø.28 ▽ .38
A4	.30	.30	Ø.15 THRU └┘ Ø.28 ▽ .38
A5	11.70	.30	Ø.15 THRU └┘ Ø.28 ▽ .38
A6	.27	2.77	Ø.15 THRU └┘ Ø.28 ▽ .38
A7	11.74	2.77	Ø.15 THRU └┘ Ø.28 ▽ .38
A8	.27	5.23	Ø.15 THRU └┘ Ø.28 ▽ .38
A9	11.74	5.23	Ø.15 THRU └┘ Ø.28 ▽ .38
A10	.30	7.70	Ø.15 THRU └┘ Ø.28 ▽ .38
A11	11.70	7.70	Ø.15 THRU └┘ Ø.28 ▽ .38
A12	3.15	7.74	Ø.15 THRU └┘ Ø.28 ▽ .38
A13	6.00	7.74	Ø.15 THRU └┘ Ø.28 ▽ .38
A14	8.85	7.74	Ø.15 THRU └┘ Ø.28 ▽ .38

SECTION E-E
SCALE 1 / 2


DETAIL F
SCALE 1 : 1

- NOTES:
 1. Material: Aluminum 5052, 6061, or 6063
 2. Finish: Anodize Clear

DRAWN Grafton	4/24/2017			
CHECKED				
QA		TITLE Face Plate, X3		
MFG				
APPROVED				
		SIZE C	DWG NO Face Plate, X3	REV A
		SCALE 1 / 2	SHEET 1 OF 1	



NOTES:
 1. Material: Aluminum 5052, 6061, or 6063
 2. Finish: Anodize Clear

DRAWN Grafton	4/24/2017	ALL-TECH  CONTROLS		
CHECKED				
QA		Base Plate, X3		
MFG		SIZE	DWG NO	REV
APPROVED		C	Base Plate, X3	A
		SCALE	1 / 2	SHEET 1 OF 1