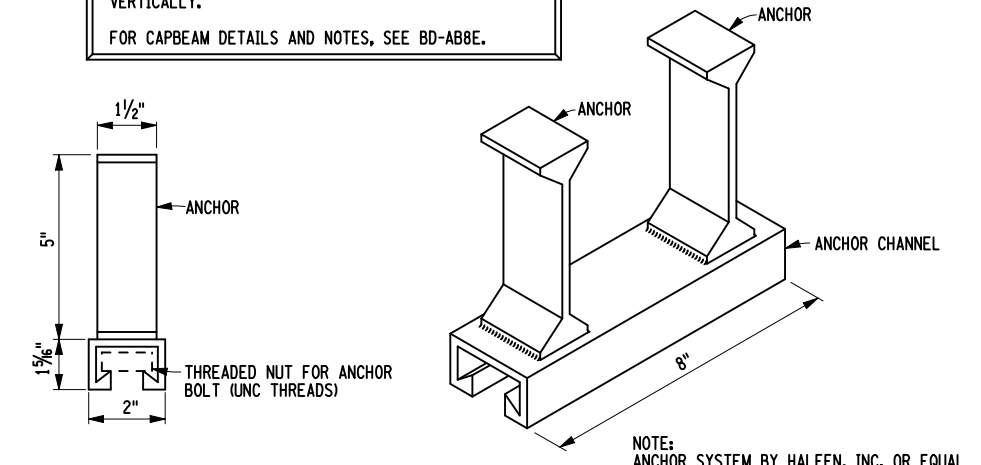
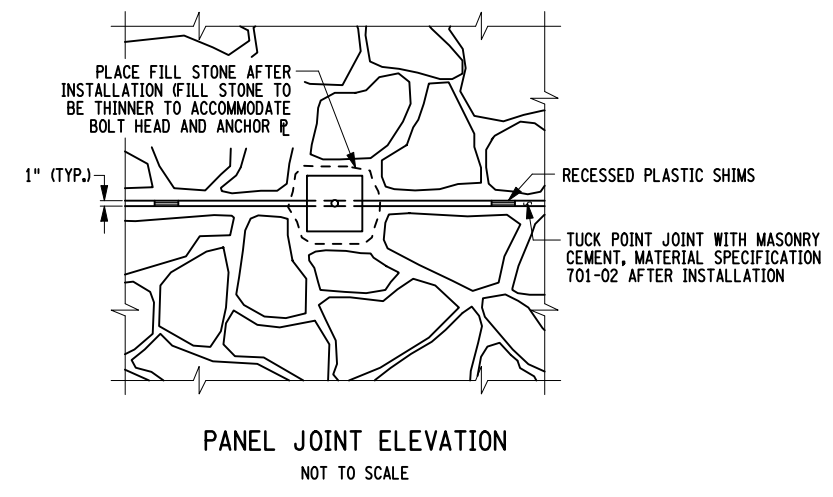
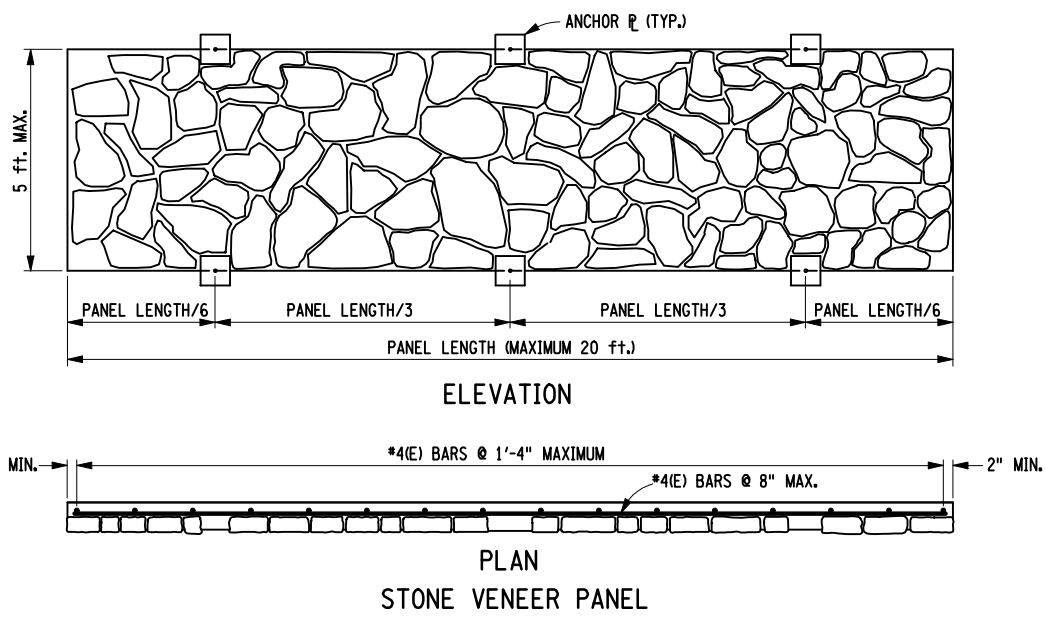
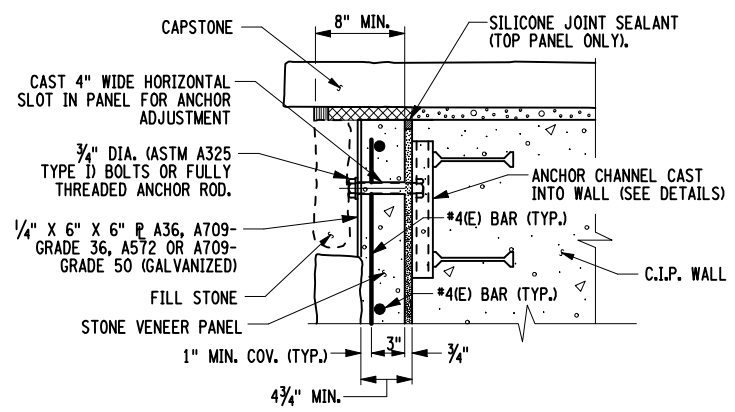


DESIGNER NOTES:
 IF STONE VENEER PANELS ARE ALLOWED, AND PROVIDING THERE IS SUFFICIENT SPACE TO PERMIT INSTALLATION, THE DETAILS SHOWN ON THIS SHEET MUST BE INCLUDED IN THE CONTRACT PLANS.
 RANDOM STONE RUBBLE FACING SHOWN, DIMENSIONAL MASONRY FACING ALSO AVAILABLE AT DESIGNERS OPTION. PANELS MAY BE ORIENTED HORIZONTALLY AS SHOWN OR VERTICALLY.
 FOR CAPBEAM DETAILS AND NOTES, SEE BD-AB8E.

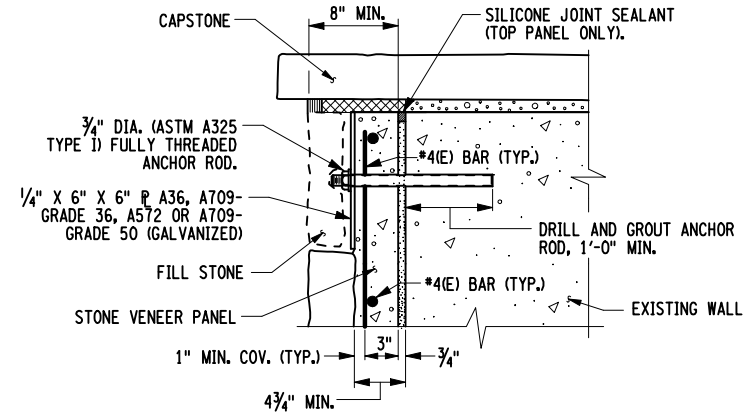


ANCHOR CHANNEL
(PROVIDED BY PANEL MANUFACTURER)
NOT TO SCALE

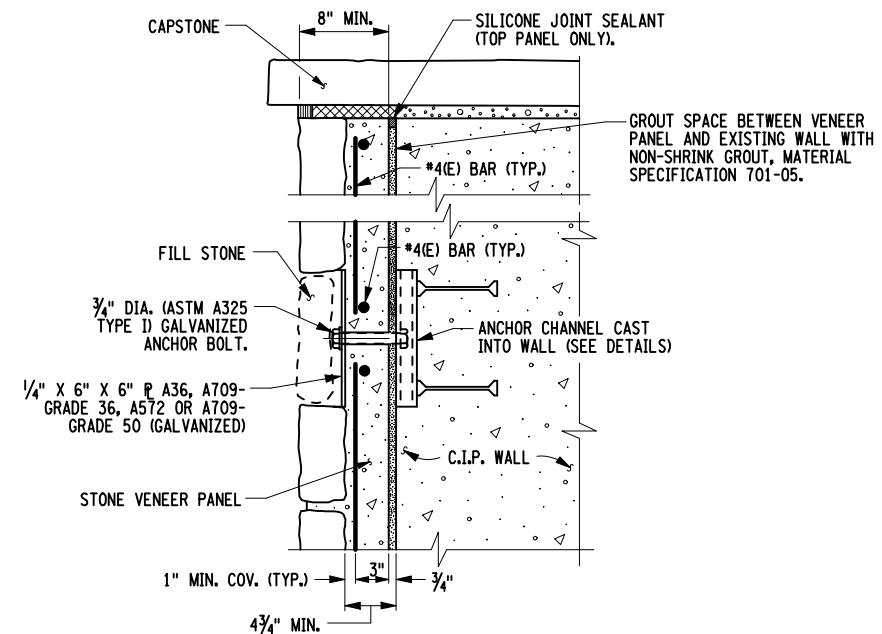
NOTE:
 ANCHOR SYSTEM BY HALFEN, INC. OR EQUAL TO BE HOT DIPPED GALVANIZED. NUTS ARE PREINSTALLED IN ANCHOR CHANNEL WITH FOAM BLOCKS AT EACH END.



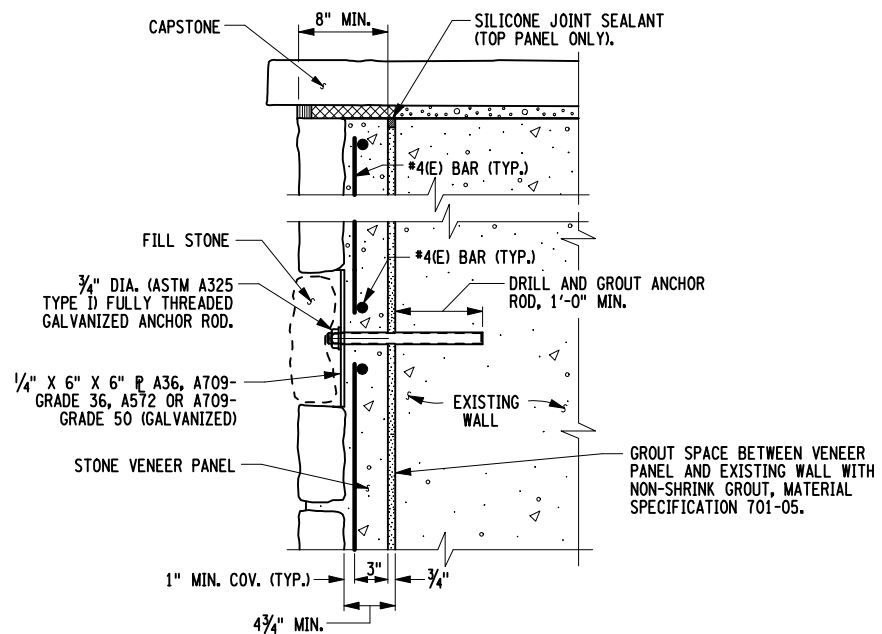
TYPICAL SECTION
PANEL JOINT ATTACHMENT ALONG EDGE
(NEW CONSTRUCTION)
 NOT TO SCALE



TYPICAL SECTION
PANEL JOINT ATTACHMENT ALONG EDGE
(EXISTING WALL)
 NOT TO SCALE



TYPICAL SECTION
PANEL JOINT ATTACHMENT
(NEW CONSTRUCTION)
 NOT TO SCALE



TYPICAL SECTION
PANEL JOINT ATTACHMENT
(EXISTING WALL ONLY)
 NOT TO SCALE

NOTES:

IF THE CONTRACTOR ELECTS TO SUPPLY STONE VENEER PANELS IN LIEU OF HAND LAID STONE, THE FOLLOWING SHALL APPLY:

SHOP DRAWINGS SHALL BE SUBMITTED TO THE DCES IN ACCORDANCE WITH THE PCCM, THE DRAWINGS SHALL INCLUDE THE INSTALLATION PROCEDURES FOR THE PANELS.

THE PANELS SHALL BE FABRICATED IN ACCORDANCE WITH MATERIAL SPECIFICATION 704-03 PRECAST CONCRETE - GENERAL.

BLAST CLEAN THE CONCRETE SURFACES TO REMOVE LAITANCE, CURING COMPOUNDS AND CONTAMINATION, AND PROVIDE A ROUGHENED SURFACE PRIOR TO INSTALLING PANELS.

INSTALL THE PANELS IN ACCORDANCE WITH THE PROCEDURE SHOWN ON THE APPROVED SHOP DRAWINGS.

PAYMENT FOR PROVIDING AND INSTALLING THE PANELS INCLUDING ANCHORS, GROUTING AND ALL MISCELLANEOUS WORK WILL BE MADE AT THE UNIT PRICE BID FOR STONE MASONRY.

THE FULLY THREADED ANCHOR RODS FOR THE VENEER PANEL MAY BE DRILLED AND GROUTED INTO THE CONCRETE SUBSTRATE.

DRILLING AND GROUTING OF THE FULLY THREADED ANCHOR RODS SHALL BE IN ACCORDANCE WITH SECTION 586 - MISCELLANEOUS STRUCTURAL RECONSTRUCTION.

ALL BOLTS, NUTS AND OTHER HARDWARE TO BE GALVANIZED IN ACCORDANCE WITH MATERIAL SPECIFICATION 719-01. COST TO BE INCLUDED UNDER THE STONE MASONRY ITEM.

PANELS LESS THAN 13 ft. IN LENGTH REQUIRE ONLY FOUR ANCHORS LOCATED AT OUTER QUARTER POINTS.

SIZE OF PANELS SHOWN ARE FOR REFERENCE ONLY. ACTUAL SIZES AND SHAPES SHALL BE DETAILED ON THE SHOP DRAWINGS. PANELS THICKER THAN 8 in. ARE AVAILABLE, IF REQUIRED.

ISSUED 5/01/08		STATE OF NEW YORK DEPARTMENT OF TRANSPORTATION OFFICE OF STRUCTURES	
REVISED 6/28/10		STONE VENEER PANEL DETAILS	
	APPROVED: 6/28/10 ORIGINAL SIGNED BY ARTHUR P. YANNOTTI, P.E. ACTING DEPUTY CHIEF ENGINEER (STRUCTURES)		