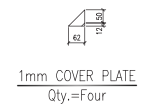
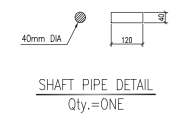
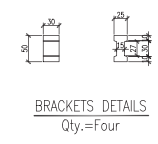
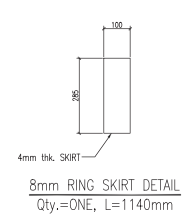
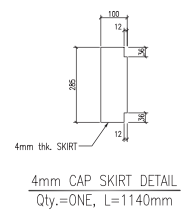
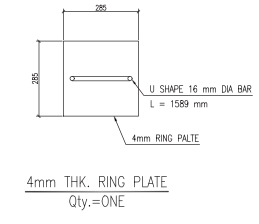
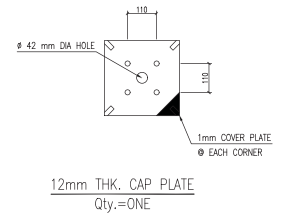
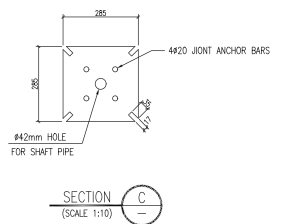
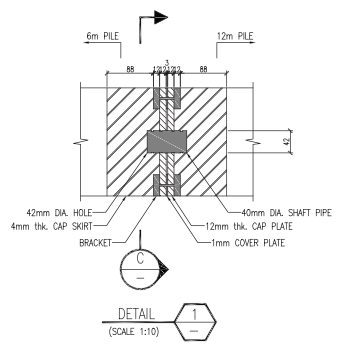
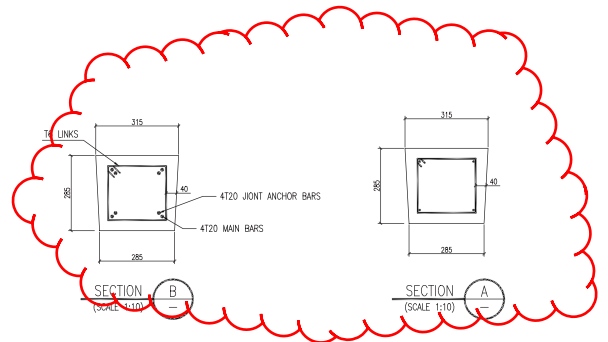


ELEVATION  
SCALE NIS



- \* CONNECTION PROCEDURE
1. AFTER DRIVING OF LOWER PART OF PIPE, SHAFT PIPE SHOULD BE INSTALLED IN 42mm DIA HOLE.
  2. UPPER PART OF PIPE SHOULD BE INSTALLED ON LOWER PART OF PILE.
  3. AFTER INSTALLING UPPER PART OF PIPE, 4 NUMBER OF BRACKETS SHOULD BE INSTALLED IN EACH CORNER OF PIPE JOINT.
  4. AFTER INSTALLING BRACKETS IN PIPE JOINT, 4 NUMBER OF PLATE SHOULD BE INSTALLED BETWEEN CAP PLATES.
  5. AFTER INSTALLING COVER PLATES, UPPER PART OF PIPE DRIVING SHALL BE STARTED.

NOTES

1. ALL DIMENSIONS ARE IN MILLIMETERS UNLESS OTHERWISE NOTED.
2. COORDINATES MEASUREMENTS ARE IN METERS.
3. COMPRESSIVE STRENGTH OF CONCRETE AT 28 DAYS.  
- STRUCTURAL CONCRETE :  $f_c' = 35MPa$
4. YIELD STRENGTH OF REINFORCEMENT BAR  
-  $F_y = 420MPa$ , ASTM A615, DENOTED WITH "T"
5. THE LOCATION SHALL BE VERIFIED WITH THE LATEST PLOT PLAN
6. CONNECTING BRACKETS SHOULD BE COATED WITH 2 LAYER OF BENGALCAL RED LEAD PRIMER WITH A MINIMUM DRY THICKNESS OF 75 MICRO METERS PER EACH LAYER, BY MANUFACTURER.
7. PILE JOINT SHALL BE JOINT BRACKET TYPE.
8. MATERIAL FOR STRUCTURAL STEEL SHALL BE EN10025 S235 JR TYPE OR EQUIVALENT. MINIMUM YIELD STRENGTH (FY) SHALL BE NOT LESS THAN 235MPa

AS BUILT