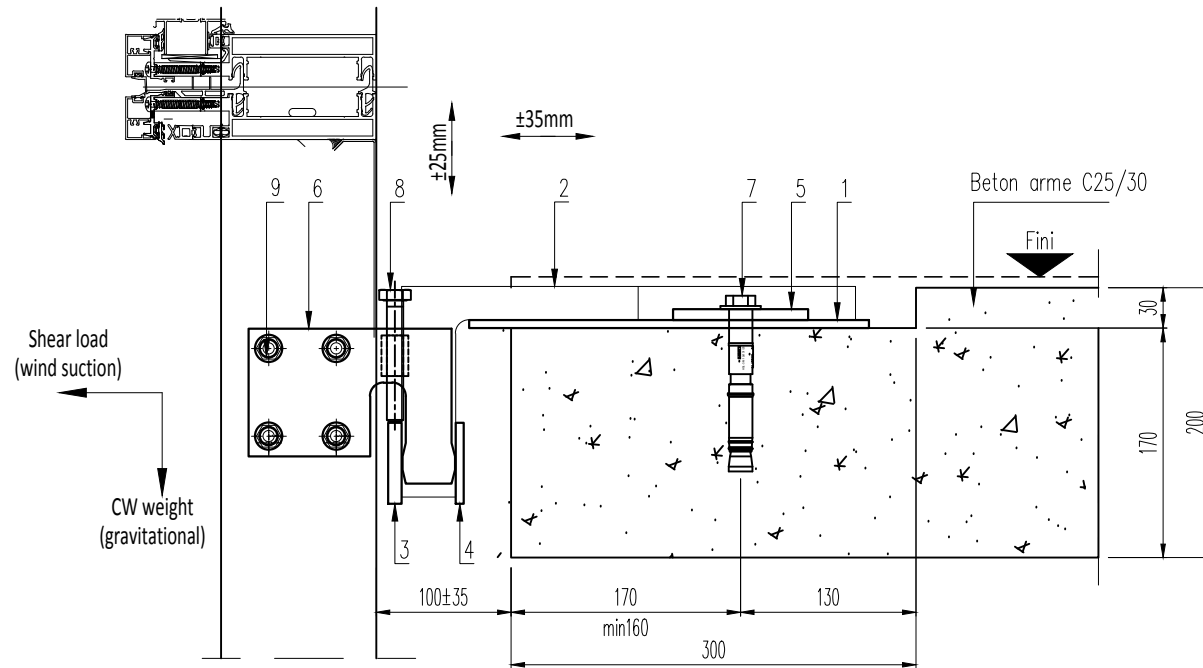
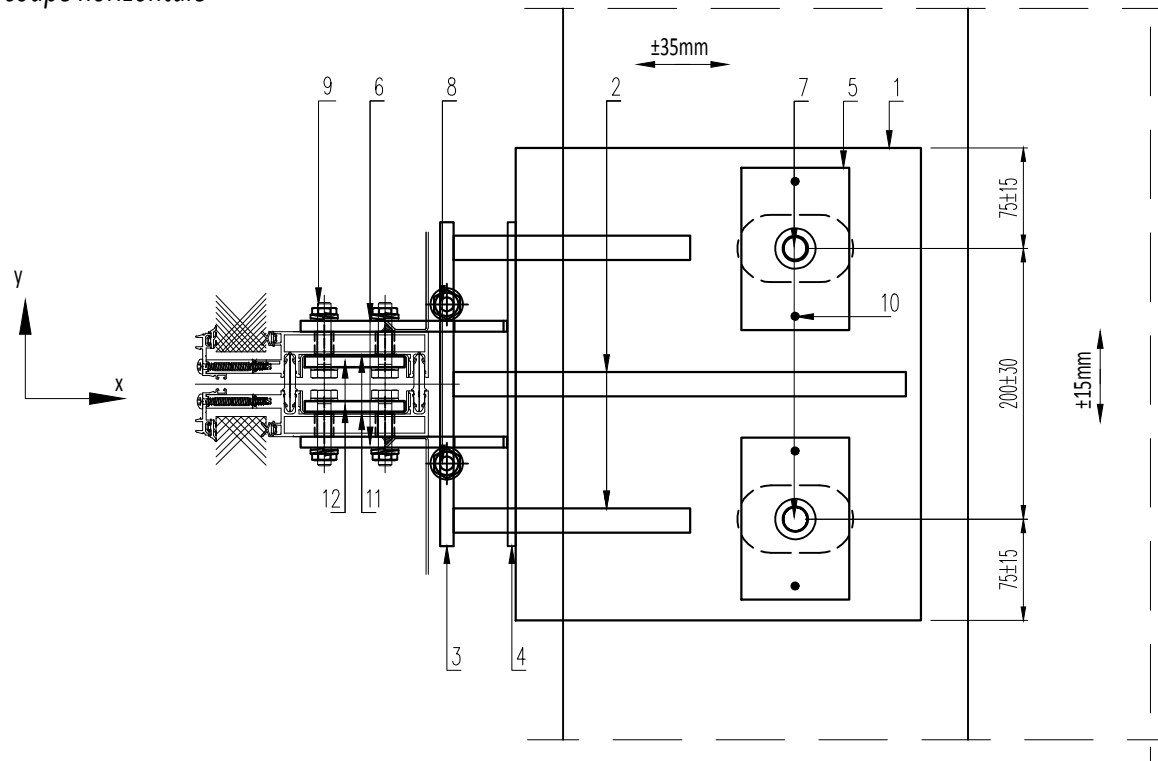


*-coupe transversale -*



*-coupe horizontale -*



Poz.	Detalii
1	Platine 6mm, S355 JR
2	Acier plat 18mm, S355 JR
3	Acier plat 10mm, S355 JR
4	Acier plat 6mm, S355 JR
5	Rondelle -acier plat 8mm, S355 JR
6	Platine 8mm, S355 JR
7	Chevile MKT SZ-S 18/M12
8	Vis M12, classe 8.8
9	Vis M10, classe 8.8
10	Goupille rainurée
11	Profil en acier C, t=1.5mm ("C+D")
12	Platine 8mm, S235 JR