



A

No.: 1

Date: 10-MAR-2017

Customer : A

TECHNICAL PROPOSAL

Three-phase induction motor - Squirrel cage rotor

Product line : TEFC - W22 NEMA Premium Efficiency

Catalog Number :

List Price : \$

Notes:

Performed by:
A

Checked:
A



A

No.: 1

Date: 10-MAR-2017

DATA SHEET

Three-phase induction motor - Squirrel cage rotor

Customer : A
Product line : TEFC - W22 NEMA Premium Efficiency

Frame : 364/5TS
Output : 75 HP
Frequency : 60 Hz
Poles : 2
Full load speed : 3555 rpm
Slip : 1.25 %
Voltage : 460 V
Rated current : 81.9 A
Locked rotor current : 549 A
Locked rotor current (I_L/I_n) : 6.7
No-load current : 22.0 A
Full load torque : 109 lb.ft
Locked rotor torque : 200 %
Breakdown torque : 260 %
Design : B
Insulation class : F
Temperature rise : 80 K
Locked rotor time : 10 s (hot)
Service factor : 1.25
Duty cycle : S1
Ambient temperature : -20°C - +40°C
Altitude : 1000 m
Degree of Protection : IP55
Approximate weight : 847 lb
Moment of inertia : 11.919 sq.ft.lb
Noise level : 79 dB(A)

	D.E.	N.D.E.
Bearings	6314 C3	6314 C3
Regreasing interval	4000 h	4000 h
Grease amount	27 g	27 g

Load	Power factor	Efficiency (%)
100%	0.90	93.6
75%	0.88	93.6
50%	0.83	92.4

Notes:

Performed by
A

Checked
A



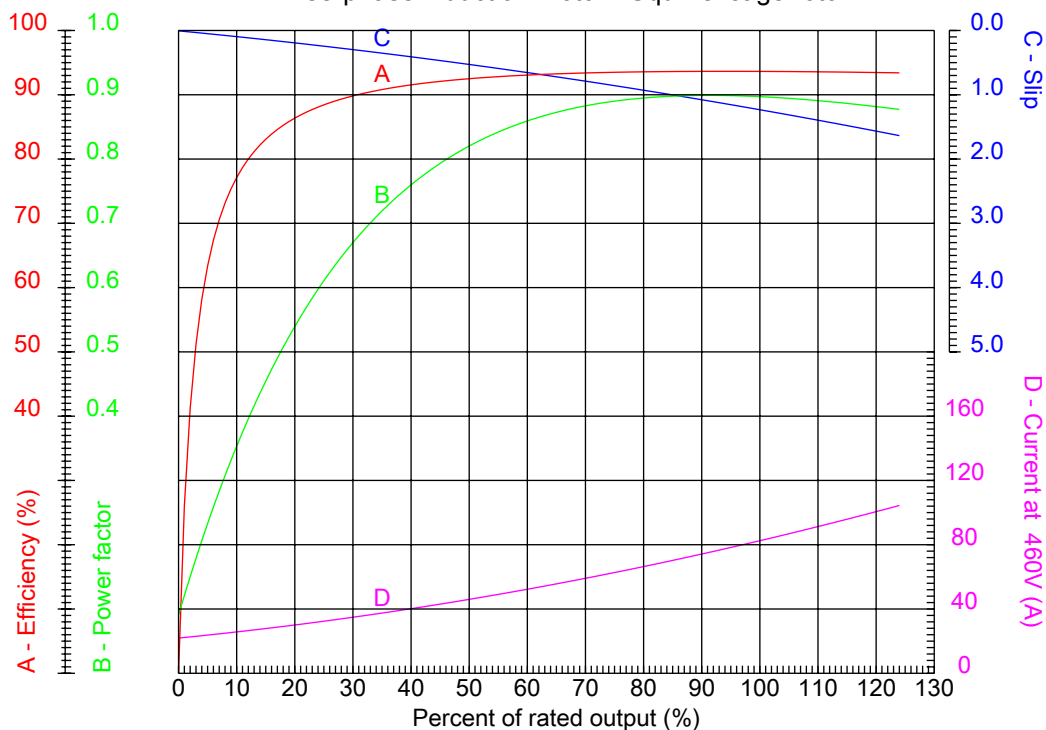
A

No.: 1

Date: 10-MAR-2017

PERFORMANCE CURVES RELATED TO RATED OUTPUT

Three-phase induction motor - Squirrel cage rotor



Customer : A
Product line : TEFC - W22 NEMA Premium Efficiency

Frame	: 364/5TS	Locked rotor current (I _L /I _n)	: 6.7
Output	: 75 HP	Duty cycle	: S1
Frequency	: 60 Hz	Service factor	: 1.25
Full load speed	: 3555 rpm	Design	: B
Voltage	: 460 V	Locked rotor torque	: 200 %
Rated current	: 81.9 A	Breakdown torque	: 260 %
Insulation class	: F		

Notes:

Performed by
A

Checked
A



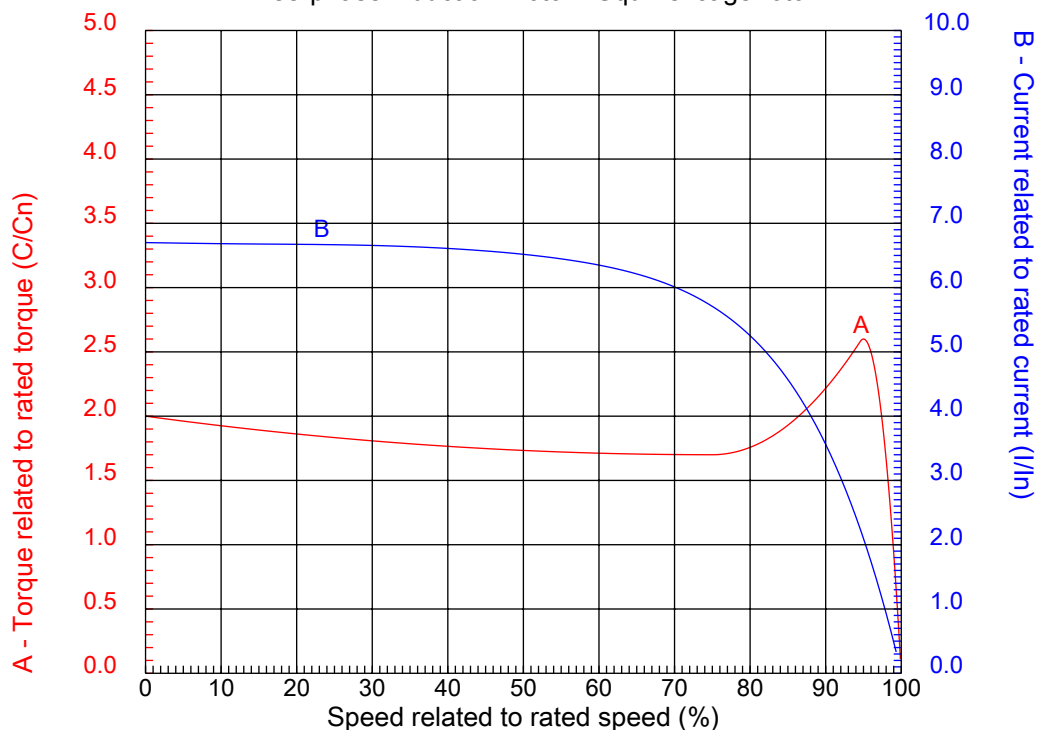
A

No.: 1

Date: 10-MAR-2017

CHARACTERISTIC CURVES RELATED TO SPEED

Three-phase induction motor - Squirrel cage rotor



Customer : A
Product line : TEFC - W22 NEMA Premium Efficiency

Frame	: 364/5TS	Locked rotor current (I _L /I _n)	: 6.7
Output	: 75 HP	Duty cycle	: S1
Frequency	: 60 Hz	Service factor	: 1.25
Full load speed	: 3555 rpm	Design	: B
Voltage	: 460 V	Locked rotor torque	: 200 %
Rated current	: 81.9 A	Breakdown torque	: 260 %
Insulation class	: F		

Notes:

Performed by
A

Checked
A

1 2 3 4 5 6 7 8

A

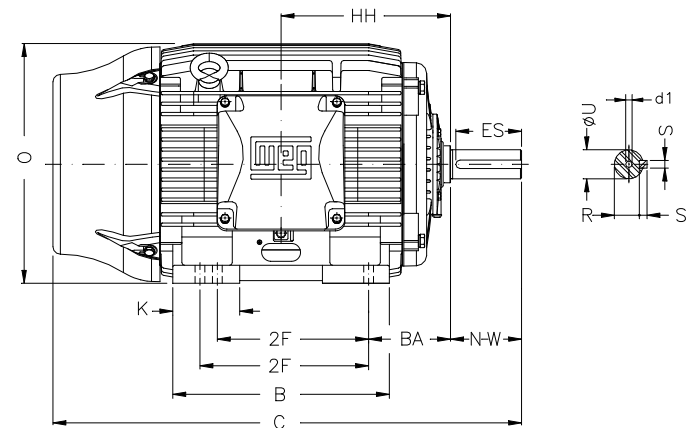
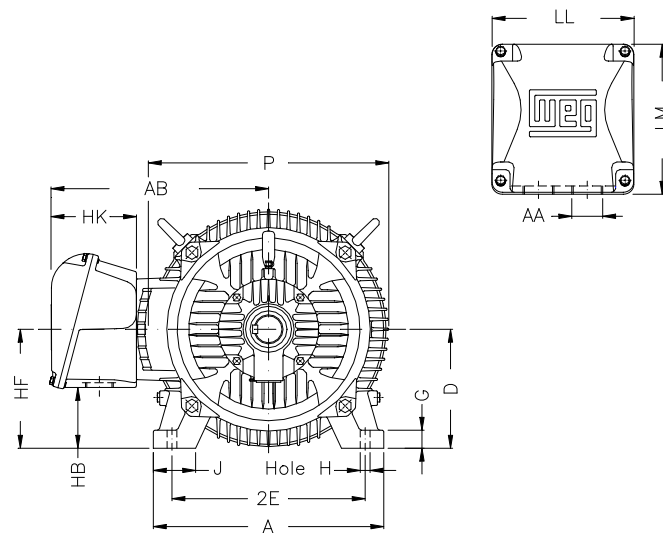
B

C

D

E

F



Notes:

Performed by: A

Checked: A

Customer: A

TEFC - W22 NEMA Premium Efficiency

Three-phase induction motor
Frame 364/5TS - IP55

10-MAR-2017
1



2E 14.016	J 3.150	A 17.165	P 17.914	AB 16.016
2F 11.260/12.244	K 4.138	B 15.512	BA 5.875	FBA 11.708
U 1.875	N-W 3.748	ES 1.968	S 0.500	R 1.591
depth 0.500	D 9.000	G 1.480	HB 4.251	O 17.957
T 6.255	HH 11.988	HK 6.024	EV 1.634	H 0.660
C 32.338	LL 10.591	LM 11.267	AA NPT 3"	d1 DUNC 3/4"-10