

Architect does not want any interior walls to be structural  
to allow future reconfiguration

(1) Diaphragm for  
wind load ↓

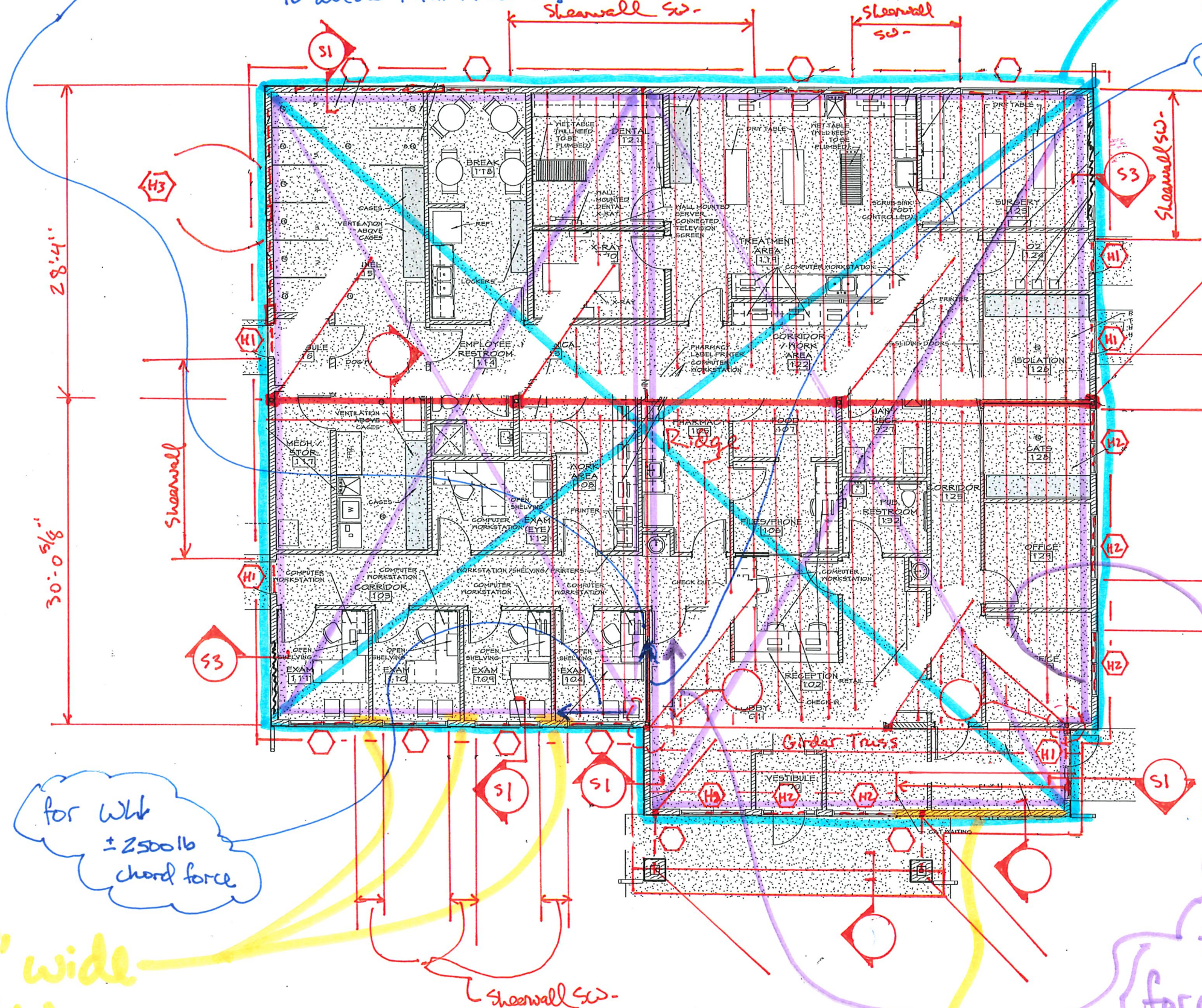
2500lb chord force  
results in  $\pm 400lb$   
chord force in  
transfer diaphragm.

Wind Load

Wind Load

Two separate  
diaphragms for  
WL ←

for WL ←, chord  
force =  $\pm 900lb$  @ break.



for WL  
 $\pm 2500lb$   
chord force

(3) 3'-0" wide  
SWs

Framing Plan

(1) wide SW