

E-66821-03

7:2 ed 8-17-67

REVISIONS

7:2 ed 9-25-67 1

ADD. REF. TO LIMITERS ON CUSTOMER CABLES.
NOTE A.

M.H.F. 9-25-67

R. R. 10-26-67 2

REMOVED REF. TO M.F. AND

ADDED STOCK NUMBERS

J.V. 10-23-67

R.D.C. 11-30-72 3

CHD. BILL OF MATERIAL

F. "NEUTRAL CONNECTIONS"

DETAIL

H.M. 11-6-78

K. R. 5-25-84 4

CHG'D. TITLE, CUSTOMER

NEUTRAL CABLE TO

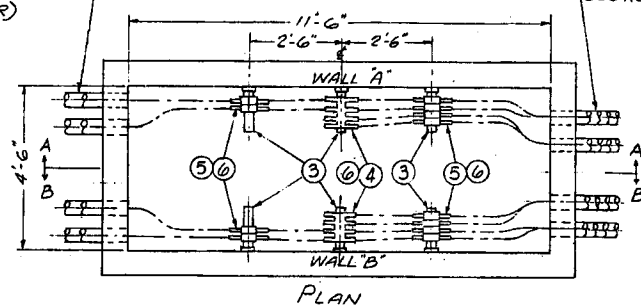
500 KCMIL UPDATED

B/MATL. REF. DWG'S.

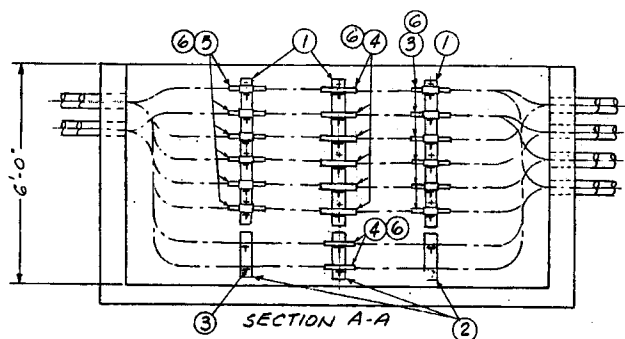
NOTES AND FILING

INFO.

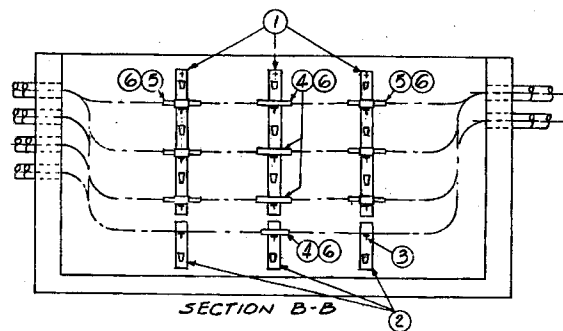
N.J.T. 4/1985

CON. EDISON
CABLES-500 KCMIL
(COPPER)CUSTOMER CABLES
500 KCMIL (COPPER)

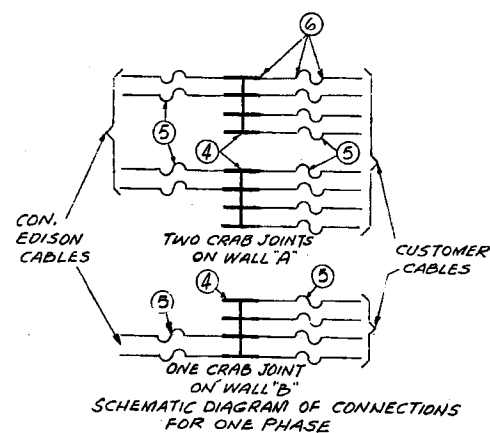
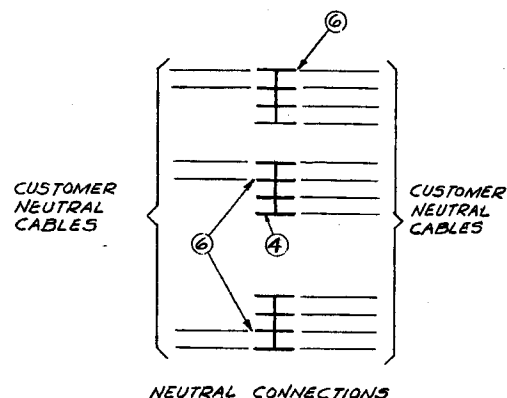
PLAN



SECTION A-A



SECTION B-B

SCHEMATIC DIAGRAM OF CONNECTIONS
FOR ONE PHASE

NEUTRAL CONNECTIONS

BILL OF MATERIAL

ITEM NO.	QUANTITY		DWG. OR SPEC. NO.	SPEC. NO.
1	6	STANCHION, 6 SLOT, 8" CENTERS	EO-10302-C	003-0460
2	6	STANCHION, 2 SLOT, 8" CENTERS	EO-10302-C	003-0353
3	36	RACK ARM, 2 WAY	EO-2238-C	003-0056
4	12	4 WAY - 4 WAY 500 MCM NON-FUSIBLE COPPER CRAB JOINT (INSULATED)		
5	36	HIGH CAPACITY LIMITER, 500 MCM COPPER WITH CABLE SOCKETS AND INSULATION	EO-100,148	571-3136
6	150	HEAT SHRINKABLE TUBE FOR KCMIL CRAB JOINT AND LIMITER CONNECTIONS 1.8"x6"	EO-13118-B	596-2626

NOTES:

- A- ALL ITEMS LISTED IN BILL OF MATERIAL, UNDER CUSTOMER SHALL BE FURNISHED AND INSTALLED BY THE CUSTOMER. "CUSTOMER" CABLES SHALL BE CONNECTED BY THE CUSTOMER AND EDISON CABLES BY THE CONSOLIDATED EDISON CO. OF N.Y. LIMITERS ON THE CON EDISON SIDE OF THE CRAB JOINT SHALL BE FURNISHED AND INSTALLED BY THE CUSTOMER. LIMITERS ON THE CUSTOMER'S SIDE OF THE CRAB JOINT SHALL BE FURNISHED AND INSTALLED BY THE CUSTOMER.
- B- BENDING RADIUS OF CABLE SHALL NOT BE LESS THAN FIVE TIMES THE DIAMETER OF THE CABLE.
- C- ITEMS IN BILL OF MATERIAL SHALL BE PURCHASED FROM COMPANY APPROVED MANUFACTURERS AS SPECIFIED ON:
EO-100,511 FOR CRAB JOINT
EO-100,148 FOR LIMITERS
EO-100,204 FOR HEAT SHRINKABLE TUBING.

REFERENCE DWG'S:

11'-6"x4'-6"x6'-0" MANHOLE (PRECAST CONCRETE) EO-2164-B
APPLICATION OF HEAT SHRINKABLE TUBING EO-13118-BCOPPER CABLE ARRANGEMENT-265/460 V
PROPERTY LINE MANHOLE
6 SETS OF 4-500 KCMIL COPPER CON. ED. CABLES
12 SETS OF 4-500 KCMIL COPPER CUSTOMER CABLES

CONSOLIDATED EDISON COMPANY OF N. Y., INC.

DATE 8-8-66
LAST REV. 4-19-85

DWG. NO. EO-12893-B REV. 4

FIELD MANUALS
NO. 1 SUPV. SPlicing
SECT. 9: SECONDARY P/L
CABLE ARRGMT.
NO. 4: SERV. INSTL.
SECT. 1: CUST. P/L BOX
NO. 16: SERV. INSPECTION
SECT. 4: ELECT. SERVICES
CONSTRUCTION STDS.
MANUAL: No. 3
SECTION 22
CABLE
ARRANGEMENT