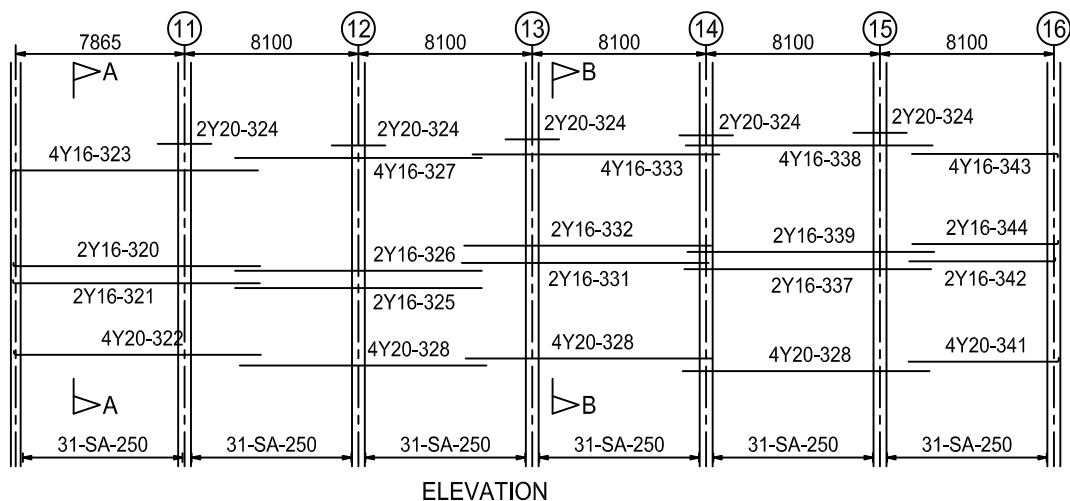


MEMBER	No OF	BARS PER MEMB	DIA	LENGTH	TOTAL NUM- BER	MARK	S C	B E N D I N G				
								A	B	C	D	E/r
BEAM 2 500x800 mm DEEP	6	2	Y16	11650	12	321	34	11500	440 180			
		4	Y16	11650	24	323	34	11500				
		2	Y16	11650	12	320	34	11500				
		4	Y20	11650	24	322	34	11500				
		10	Y20	2500	60	324	20	(2500)				
		2	Y16	11500	12	325	20	(11500)				
		2	Y16	11500	12	326	20	(11500)				
		4	Y16	11500	24	327	20	(11500)				
		12	Y20	11500	72	328	20	(11500)				
		2	Y16	11500	12	331	20	(11500)				
		2	Y16	11500	12	332	20	(11500)				
		4	Y16	11500	24	333	20	(11500)				
		2	Y16	11500	12	337	20	(11500)				
		4	Y16	11500	24	338	20	(11500)				
		2	Y16	11500	12	339	20	(11500)				
		4	Y20	7150	24	341	34	7000				
		2	Y16	6950	12	342	34	6800				
		4	Y16	6950	24	343	34	6800				
		2	Y16	6950	12	344	34	6800				
		186	Y10	2000	1116	SA1	72	690				
		186	Y10	1750	1116	SA2	72	690				
		186	Y10	650	1116	SA3	35	440				



NOTES:

- 1) MINIMUM COVER:
SIDES AND BOTTOM - 30mm
TOP - 75mm
- 2) MIN LAPPING LENGTH:
50 x BAR DIA
- 3) 30MPa CONCRETE