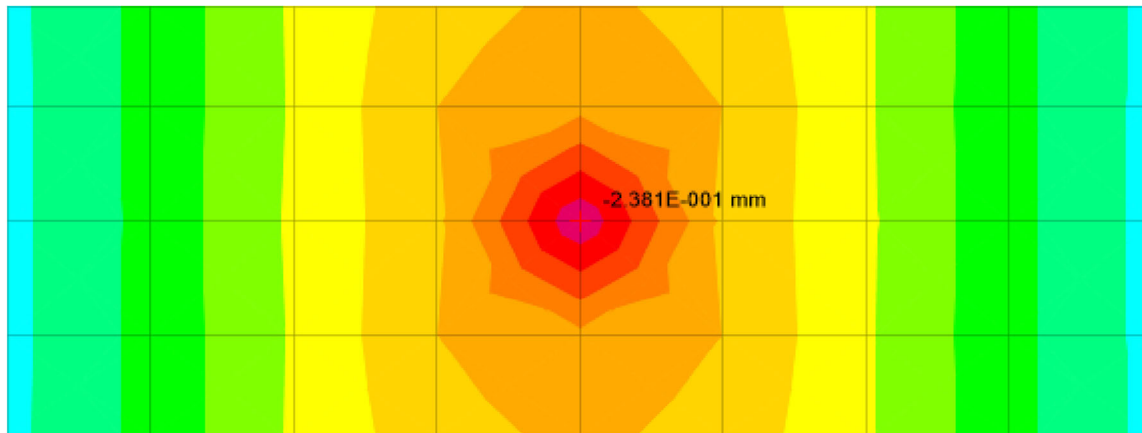


bearing capacity of raft = 800 kN/m²
Modulus of sub-grade reaction = 120*BC = 9600 kN/m³
Displacement reported from CSI-SAFE = 5.7mm



concrete compressive strength = 50MPa
bearing capacity of ISOLATED FOOTING= $0.85 \cdot FC' = 42,500 \text{ kN/m}^2$ ACI318
Modulus of sub-grade reaction = $120 \cdot BC = 42.5e+5 \text{ kN/m}^3$
Displacement reported from CSI-SAFE = 0.2mm