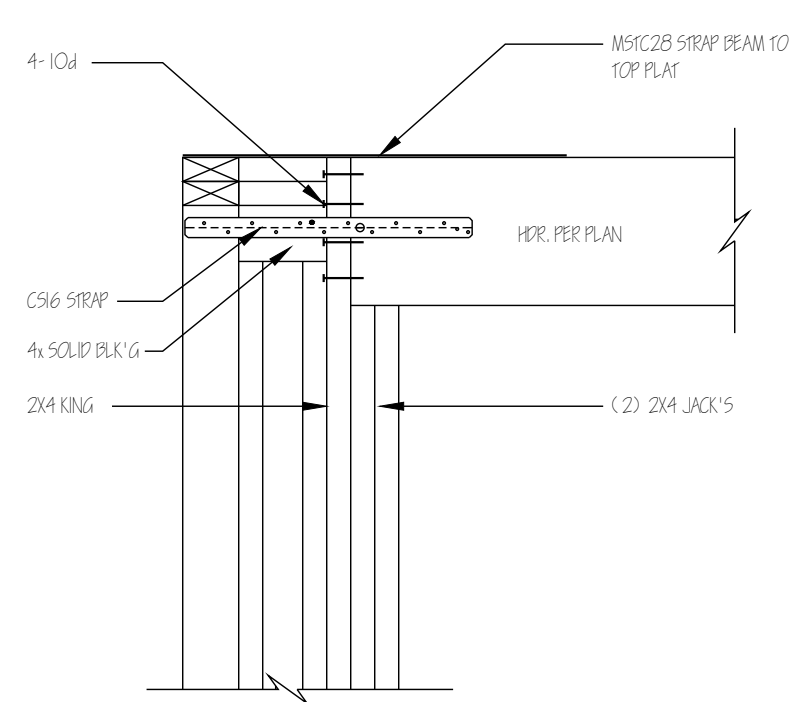
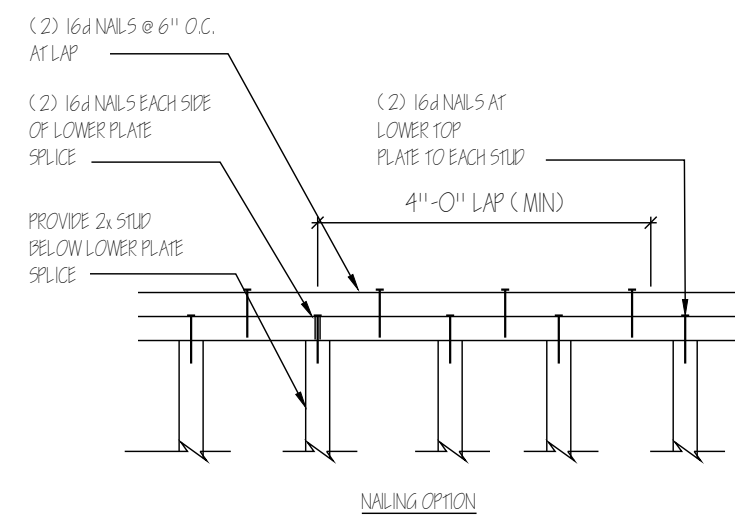


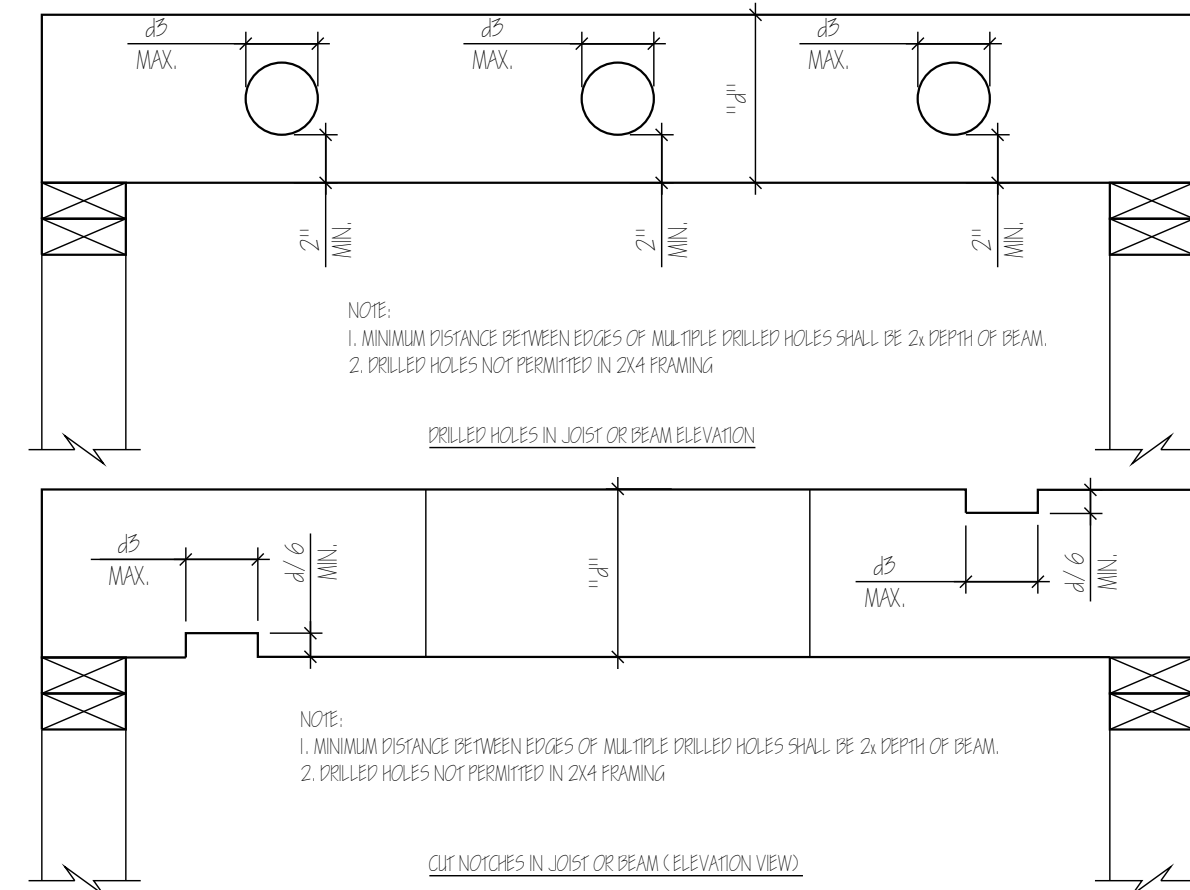
1 TYPICAL OVERHANG  
1" = 1'-0"



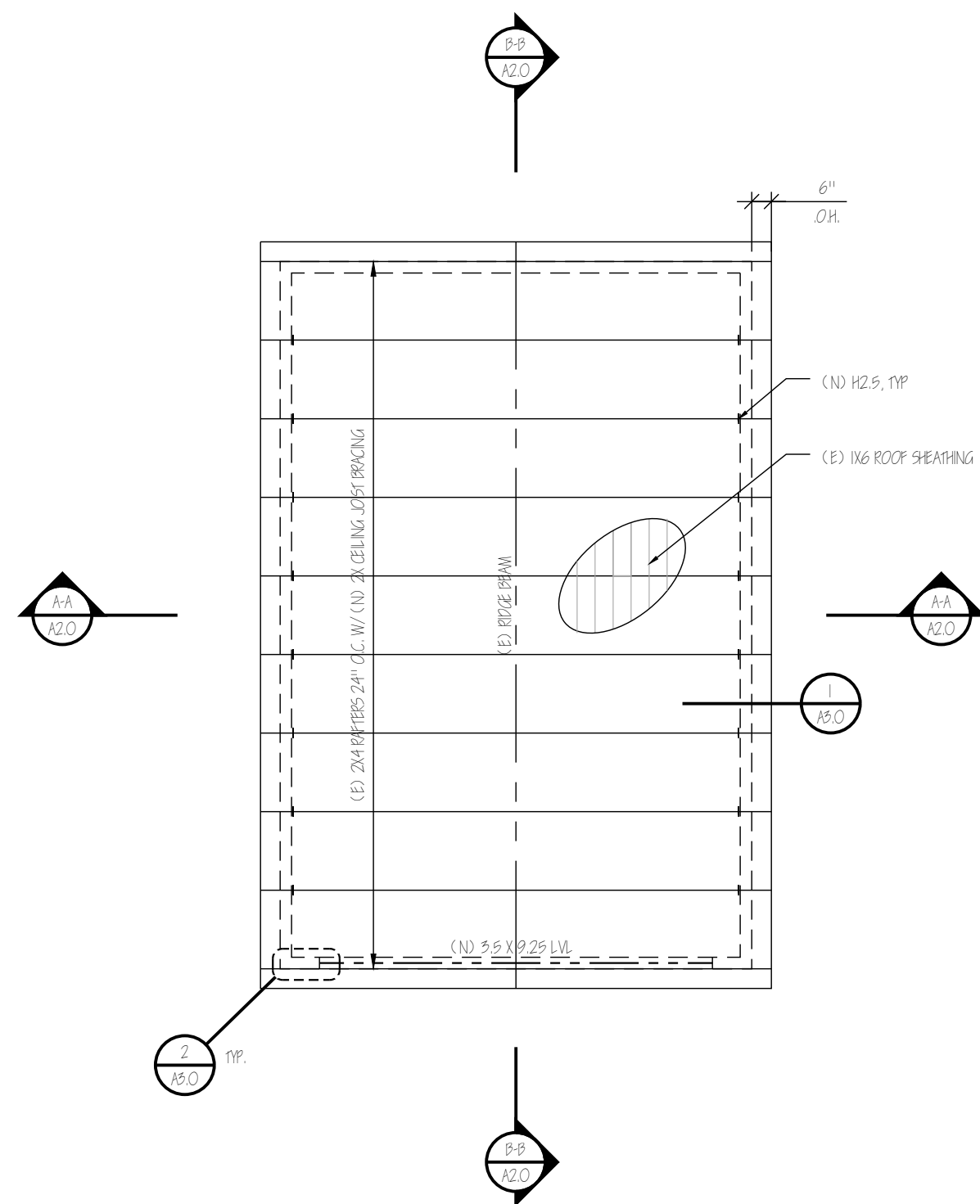
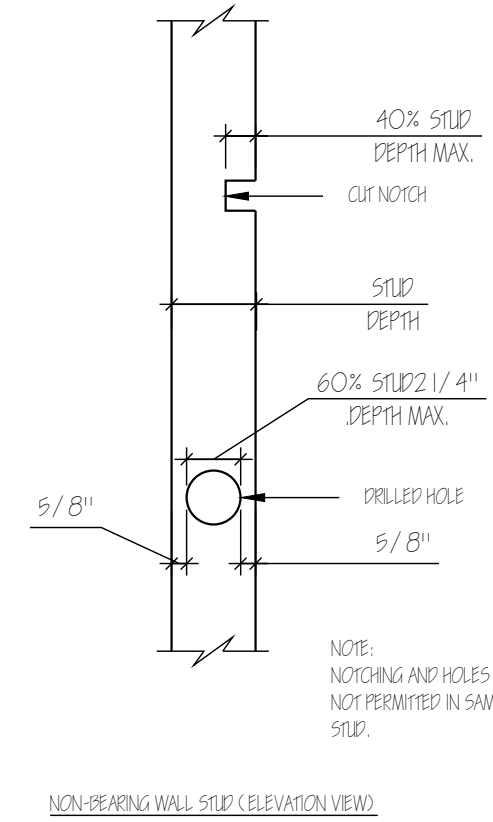
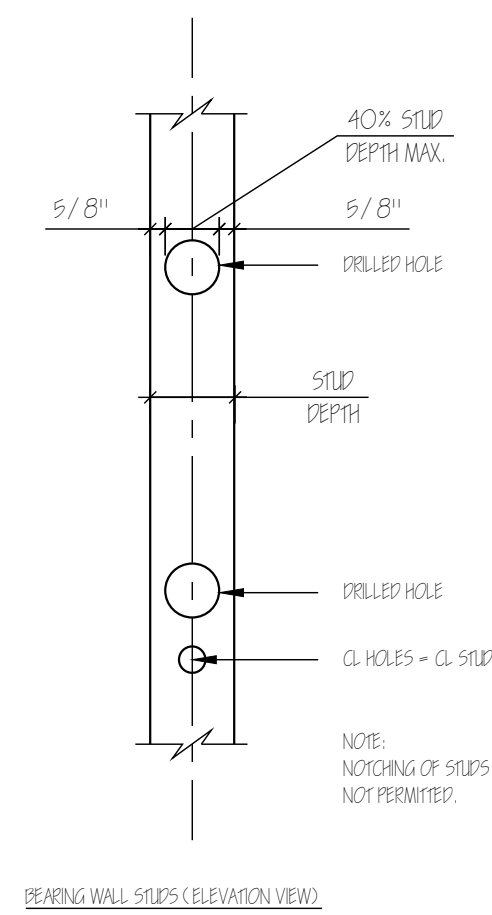
2 RIDGE BEAM TO WALL CONNECTION  
1" = 1'-0"



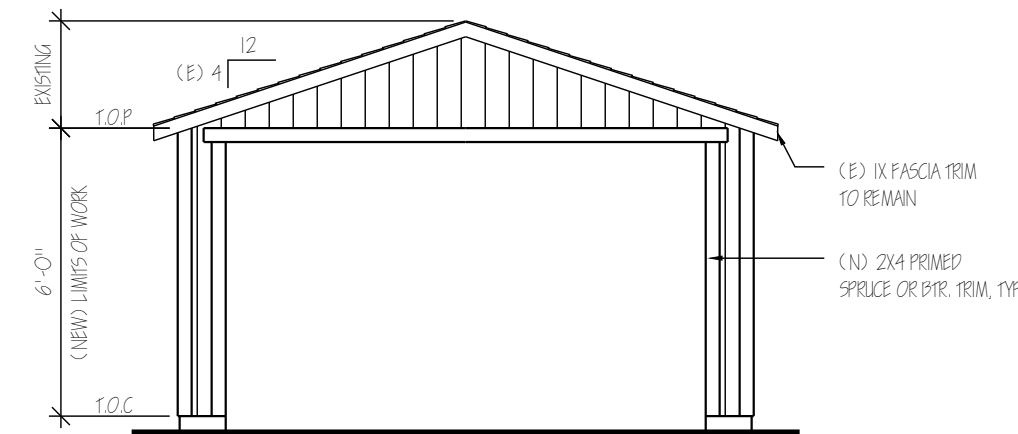
3 TYP. TOP PLATE SPLICE  
1" = 1'-0"



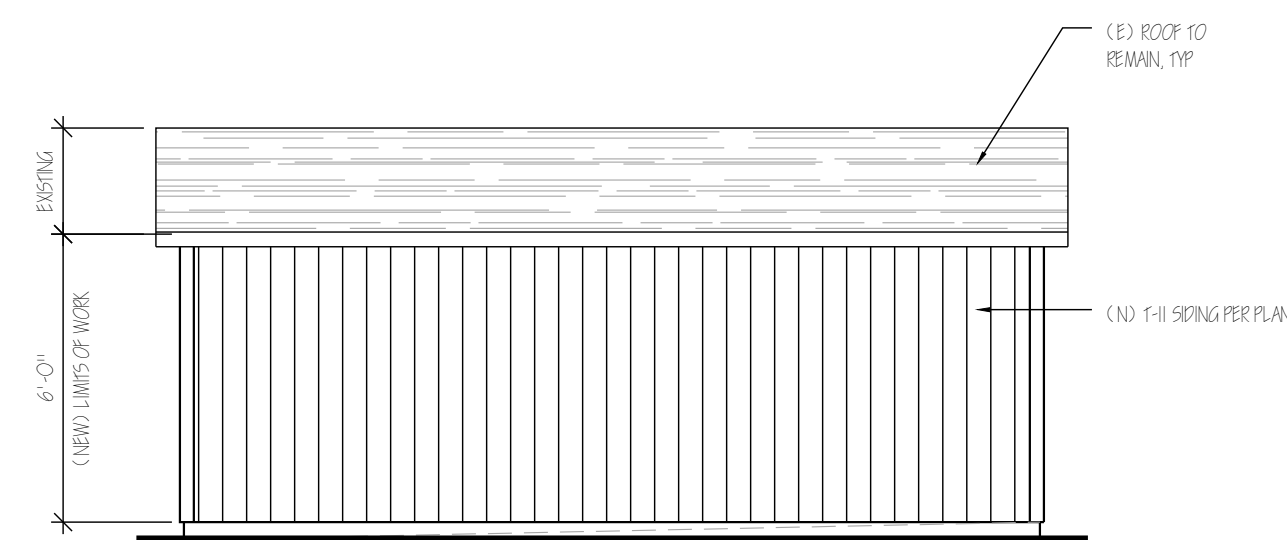
4 TYPICAL HOLES AND NOTCHING IN WOOD  
1 1/2\"/>



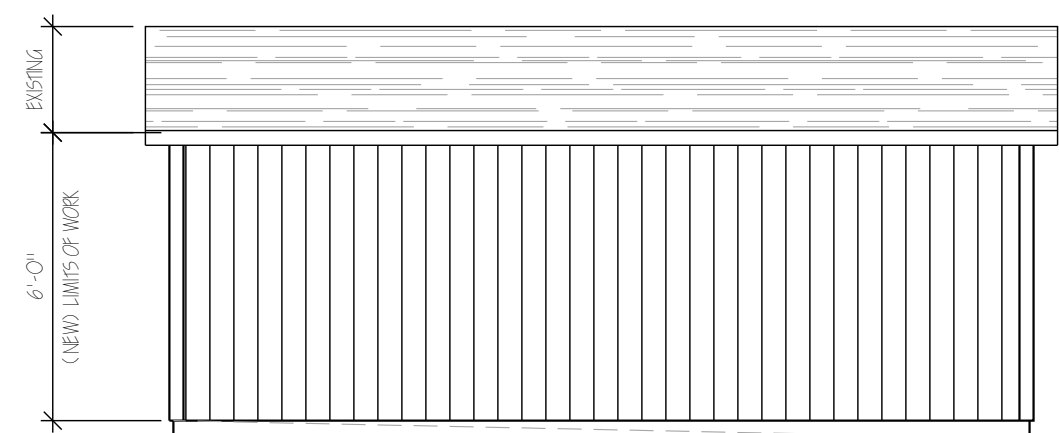
(E) ROOF PLAN  
SCALE: 1/4" = 1'-0"



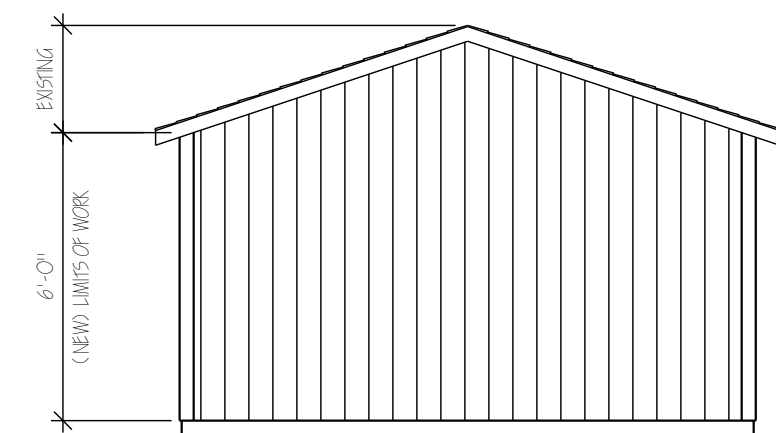
FRONT ELEVATION  
SCALE: 1/4" = 1'-0"



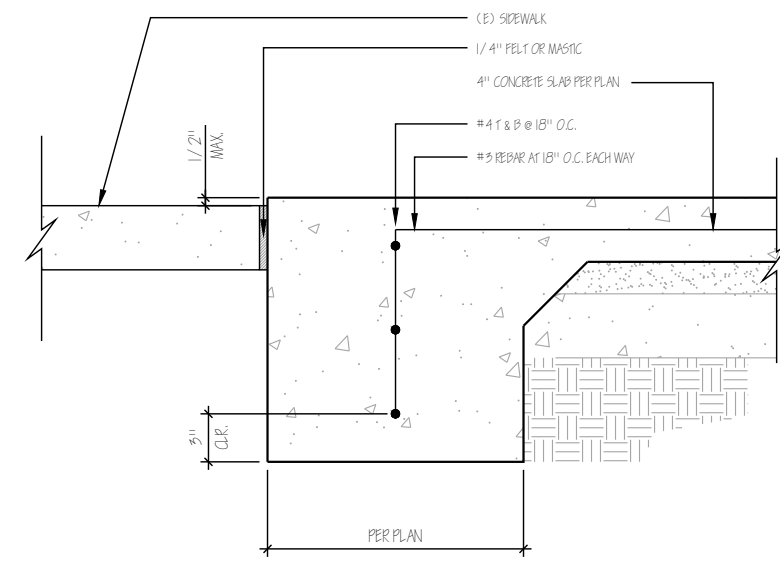
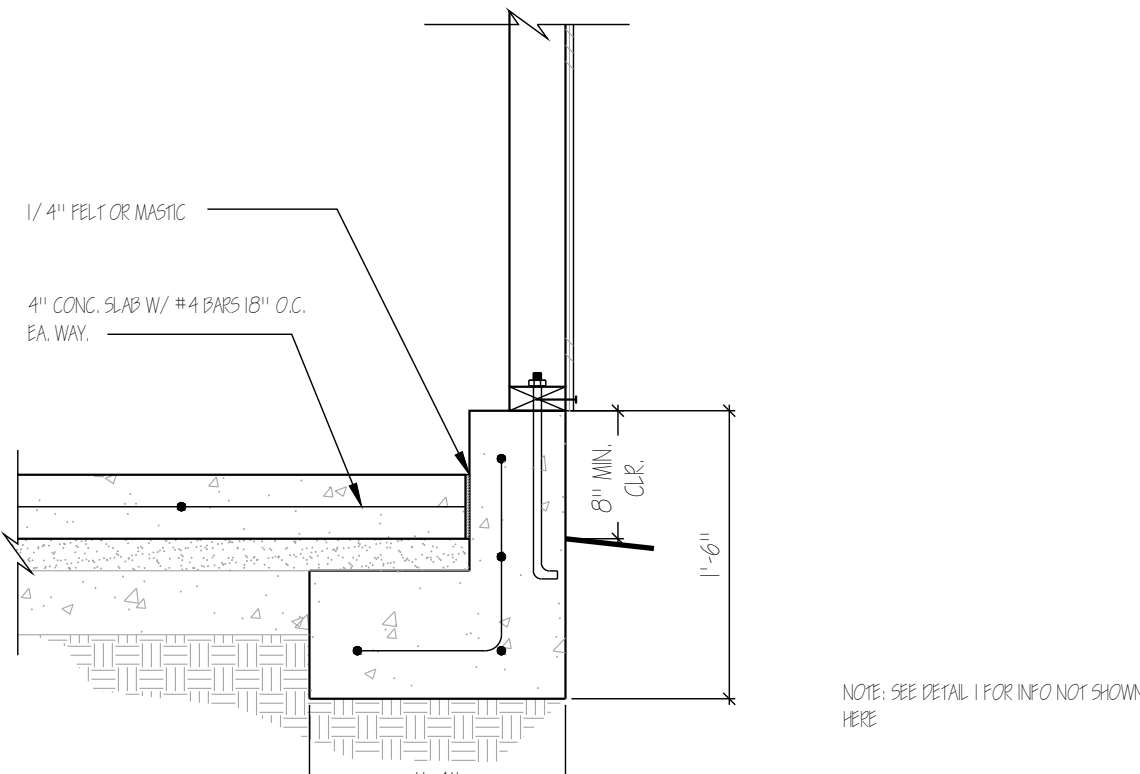
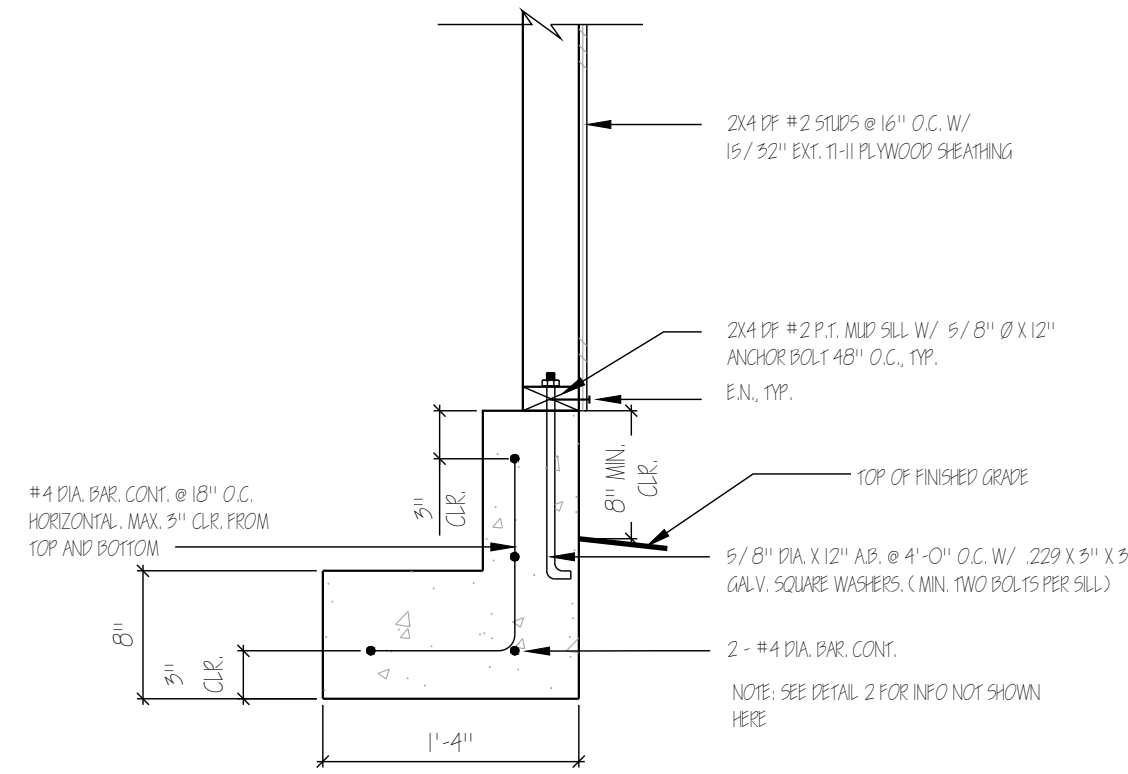
SIDE ELEVATION  
SCALE: 1/4" = 1'-0"



SIDE ELEVATION  
SCALE: 1/4" = 1'-0"



REAR ELEVATION  
SCALE: 1/4" = 1'-0"



# ELECTRICAL SYMBOLS

- DUPLEX OUTLET W/ GROUND FAULT CIRCUIT INTERRUPTER
- SINGLE POLE SWITCH
- CEILING LIGHT FIXTURE
- JUNCTION BOX

## ELECTRICAL NOTES

- (E) ELECTRICAL OUTLETS TO BE REPLACED WITH (N) GFCI
- REPLACE (E) LIGHT SWITCH WITH (N)
- (N) JUNCTION BOX AT I/O V WIRE
- GARAGE LIGHTING MUST BE HIGH EFFICIENCY
- (E) CEILING LIGHT FIXTURES TO BE REPLACED W/ (N)

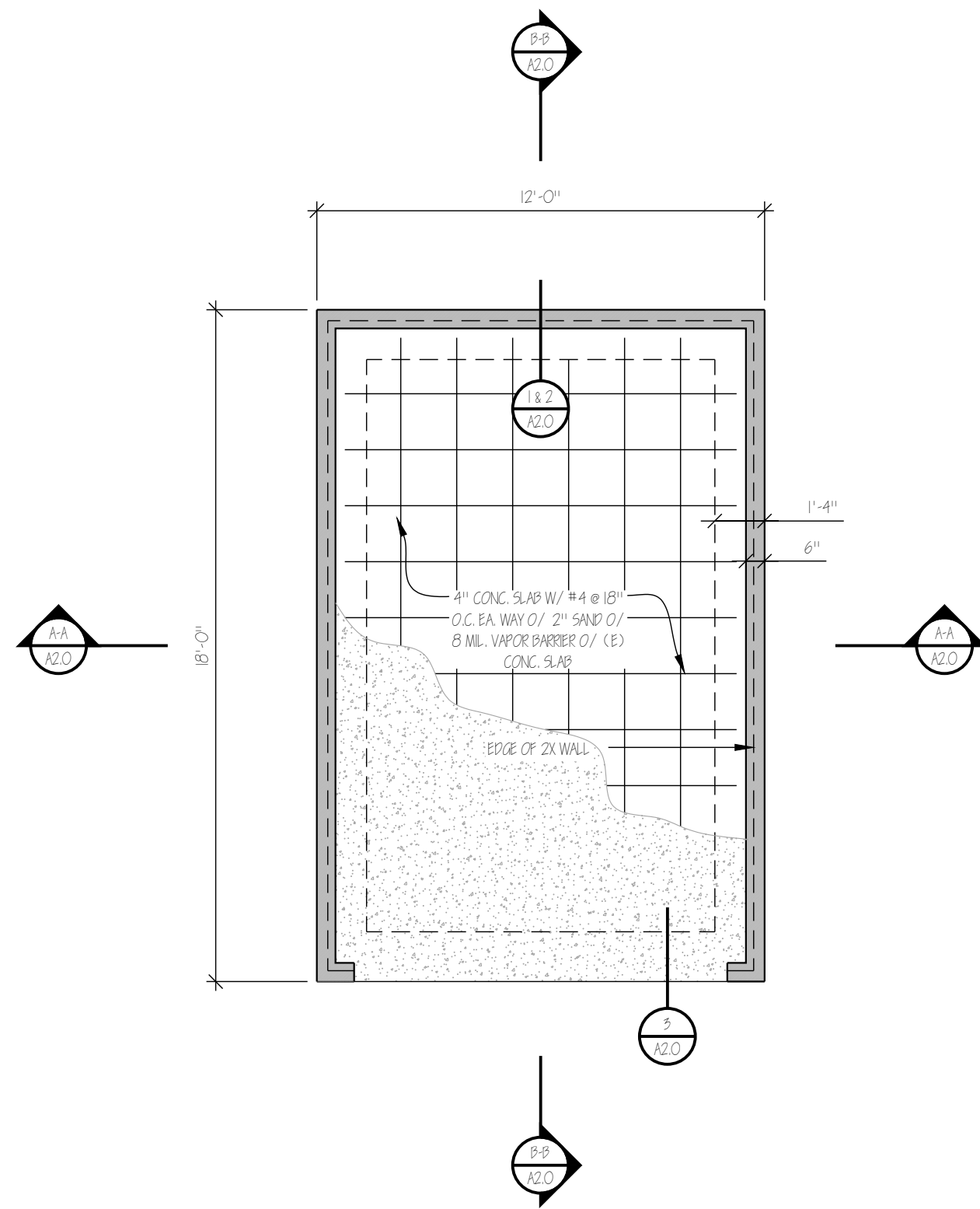
## NOTES

- T.O.P. = TOP OF PLATE
- T.O.C. = TOP OF CURB
- FINISH GRADE AROUND STRUCTURE SHALL SLOPE AWAY FROM FOUNDATION A MIN. OF 6" FOR A MIN. DISTANCE OF 10'.

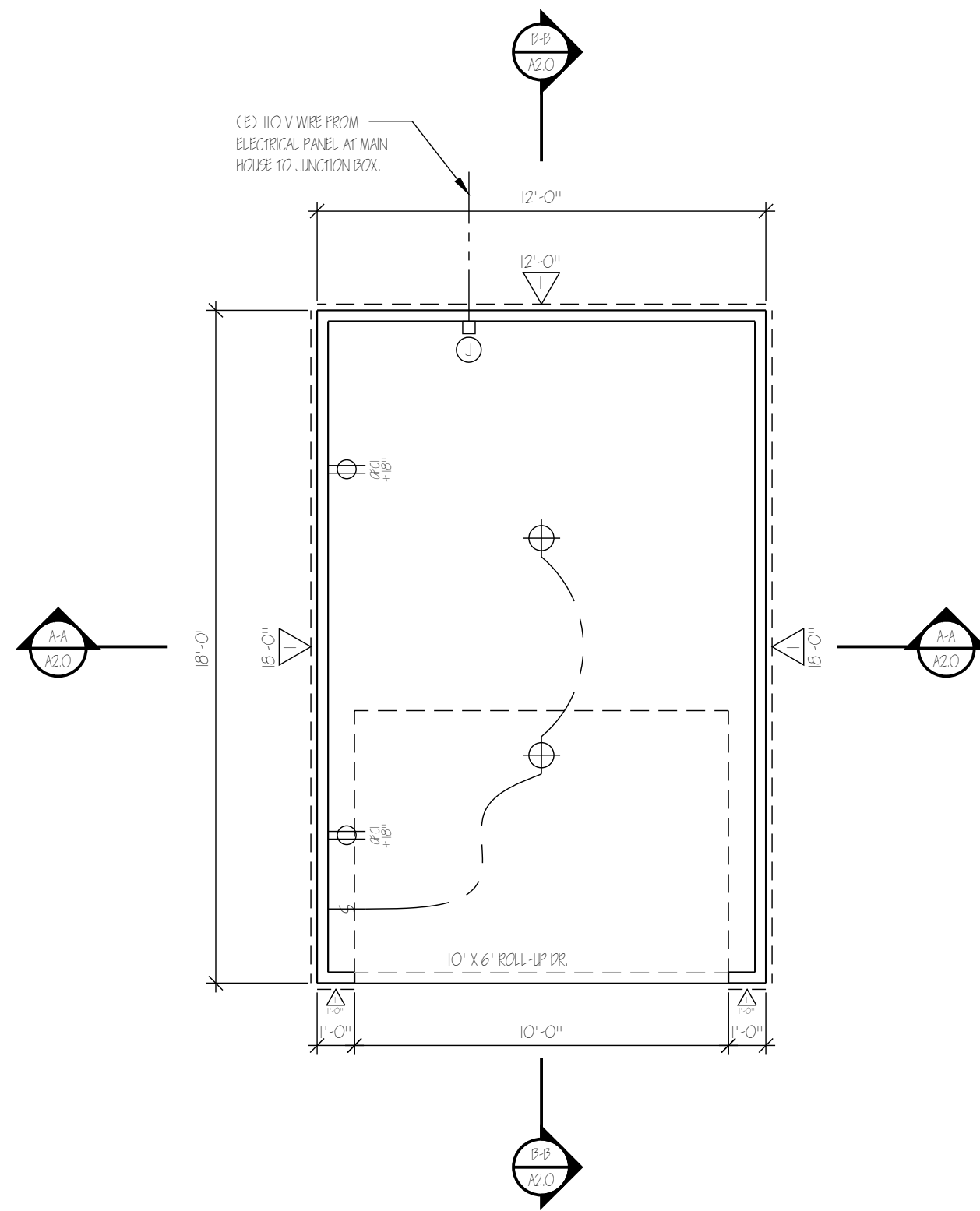
## TYPICAL NAILING SCHEDULE

SYMBOL	SHEARING & EDGE NAILS	ANCHOR BOLTS	NOTES	HD
	15/32" 11-11 EXT. PLYWOOD SHEARING W/ B4 @ 6" O.C. E.N. & 12" O.C. FIELD	5/8" @ 12" O.C. @ 40" O.C. (2 BOLTS MIN.) 7" MIN. EMBEDMENT, 12" O.C. MAX. SPACING	1,2	HD12

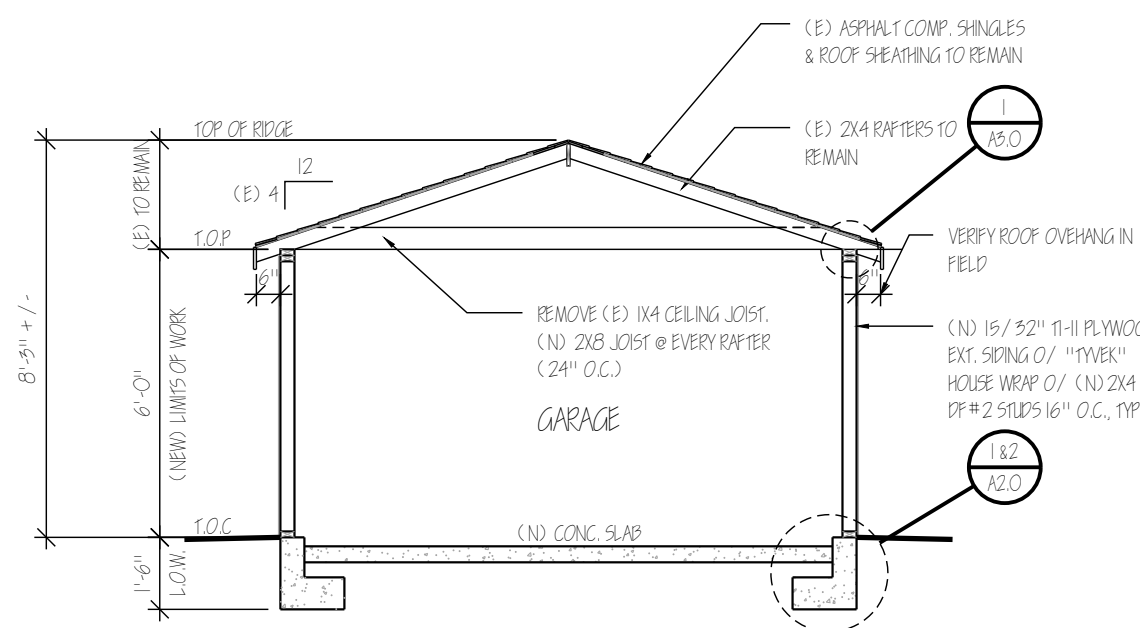
NOTE 1: USE #16 MIN. AT JOINTS OR SIPS 2 - 2x4 WITH #4 @ E.N. SPACING UNID.  
NOTE 2: USE 5x MIN. AT SHEARING JOINTS, SINKER NAILS AT JOINTS



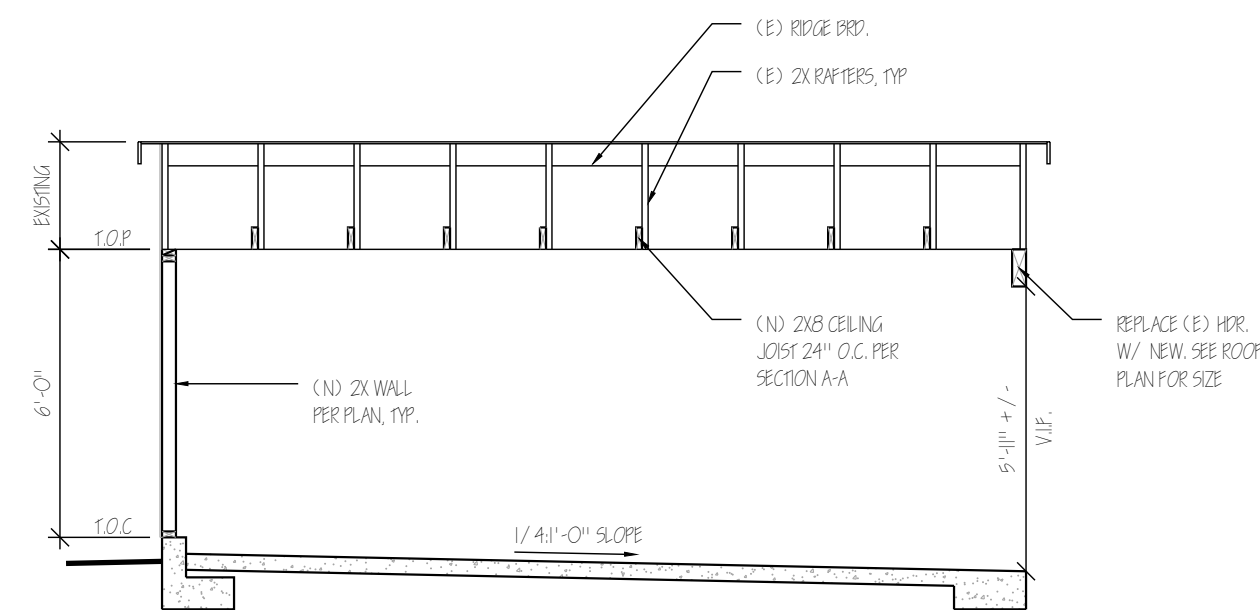
FOUNDATION PLAN  
SCALE: 1/4" = 1'-0"



FLOOR PLAN  
SCALE: 1/4" = 1'-0"



SECTION A-A PLAN  
SCALE: 1/4" = 1'-0"



SECTION B-B PLAN  
SCALE: 1/4" = 1'-0"