

BELOW BRACED WALL  
PANEL

© 16" O.C. ALONG  
BRACED WALL PANEL

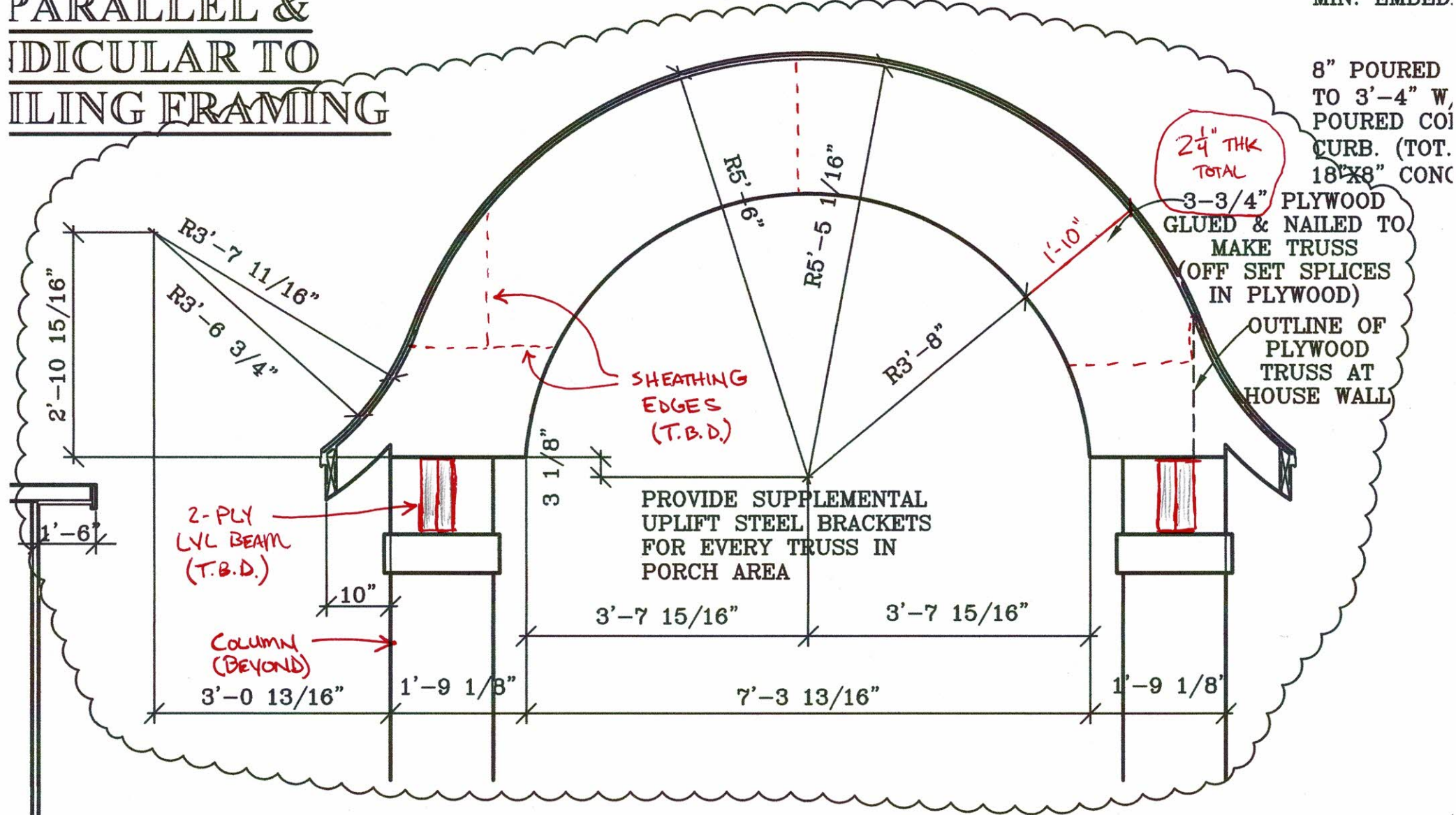
(GAR. WALLS

2X6 AWW SI  
W/ 1/2"ØX10  
BOLTS 32" (C  
MIN. EMBED.

# PANEL CONNECTION PARALLEL & PERPENDICULAR TO RAILING FRAMING

8" POURED  
TO 3'-4" W,  
POURED CON  
CURB. (TOT.  
18"X8" CONC

2 1/4" THK  
TOTAL  
3-3/4" PLYWOOD  
GLUED & NAILED TO  
MAKE TRUSS  
(OFF SET SPLICES  
IN PLYWOOD)  
OUTLINE OF  
PLYWOOD  
TRUSS AT  
HOUSE WALL



## PORCH TRUSSES DETAIL

PROVIDE SUPPLEMENTAL  
UPLIFT STEEL BRACKETS  
FOR EVERY TRUSS IN

