

AMERICAN CONCRETE INDUSTRIES

QUALITY PRECAST CONCRETE PRODUCTS



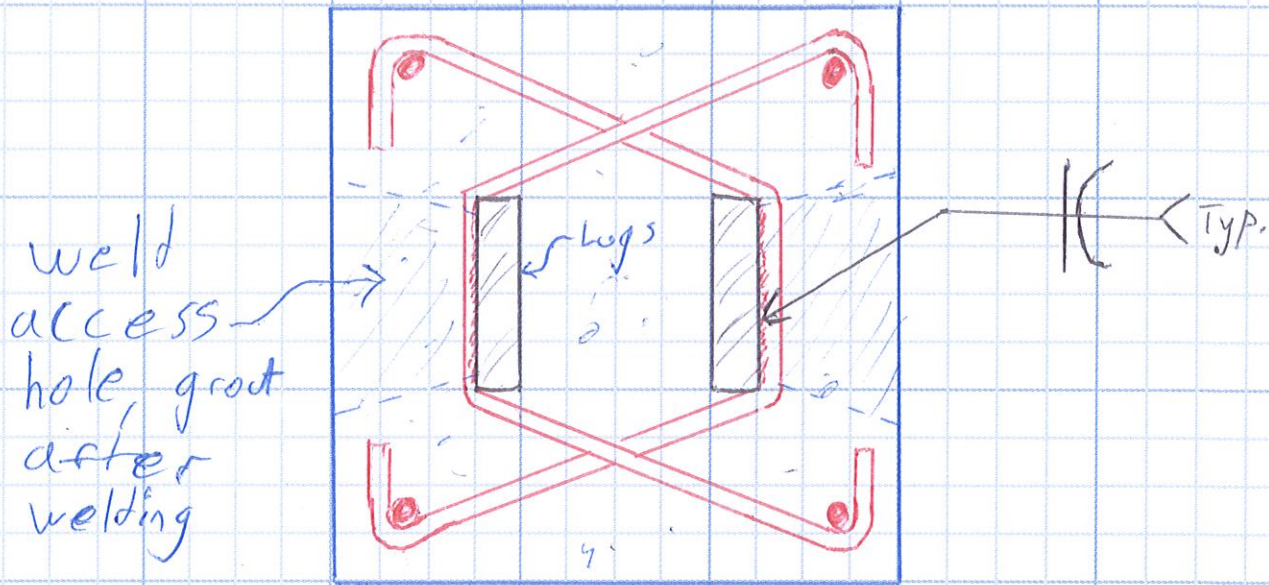
1717 STILLWATER AVENUE
VEAZIE, MAINE 04401
FAX: 207-947-3580
PH: 207-947-8334

982 MINOT AVENUE
AUBURN, MAINE 04210
FAX: 207-783-4039
PH: 207-784-1388



www.americanconcrete.com

SUPERIOR CONCRETE, LLC



Cast lugs into concrete. Would require baseplate set during concrete pour, or weld access holes in concrete.

LUG REINFORCE- MENT

PROJECT:	LOCATION:	CONTRACTOR/VENDOR:	PROJECT #	DATE:
				/ /