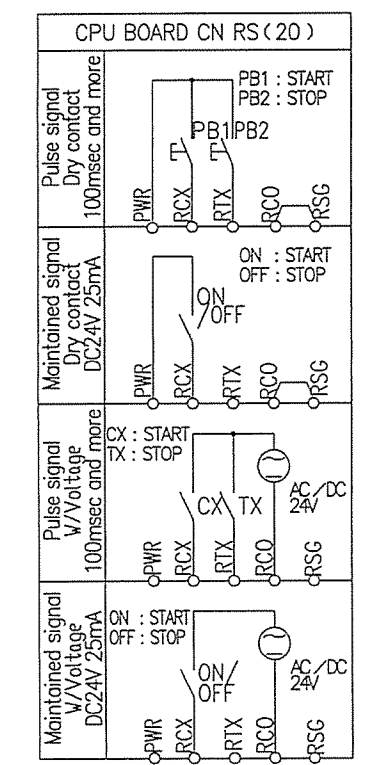


Is this for primary pump which feeds the chiller(or) the secondary pump which feeds to AHU?. Note that we do not have primary chilled water pump nor the cooling water pump



REMOTE START (RUN) -STOP CIRCUIT

- ATTENTION
- TO CHANGE TYPE OF SIGNAL (PULSE/MAINTAINED), MODE SHALL BE SELECTED ON OPERATION PANEL.
 - IF PULSE TYPE SIGNAL IS USED, LENGTH OF OUTPUT SIGNAL (PULSE) SHALL BE 100msec AND MORE.
 - IF DRY TYPE SIGNAL IS USED, TWO TERMINAL (RCO-RFG) SHALL BE SHORT CIRCUIT.
 - REMOTE START-STOP CIRCUIT to the CONTROL PANEL SHALL BE VOLTAGE FREE (DRY) CONTACTS.

NOTE

----- WIRING : EXCLUDED FROM SUPPLIER'S SCOPE SUPPLY.

☆ MARK : SHIELD WIRE SHALL BE APPLIED AND POWER CIRCUIT SHALL BE SEPARATED.

※ MARK : Refer to " CENTRIFUGAL CHILLER SPECIFICATION" and " ELECTRIC ADDITIONAL OPTION "

(図面名称 Title)

WIRING DIAGRAM

STANDARD

380~440V INVERTER (MOTOR TERMINAL BOX : DOUBLE)

尺度SCALE 形 式 MODEL

GART

親部番 NEXT ASSY

特別配布先

1

2

3

4

5

6

7

8

9

名 称

ワイヤリングシート

名 称

SHEET, WIRING

図種 図 番 DWG. NO.

HCA07.2A279

品 別

訂 入 符 号

業 別

標準配布

ST. DISTR.

品 別

訂 入 符 号

業 別

標準配布

ST. DISTR.

参考部番

REF. PART NO.

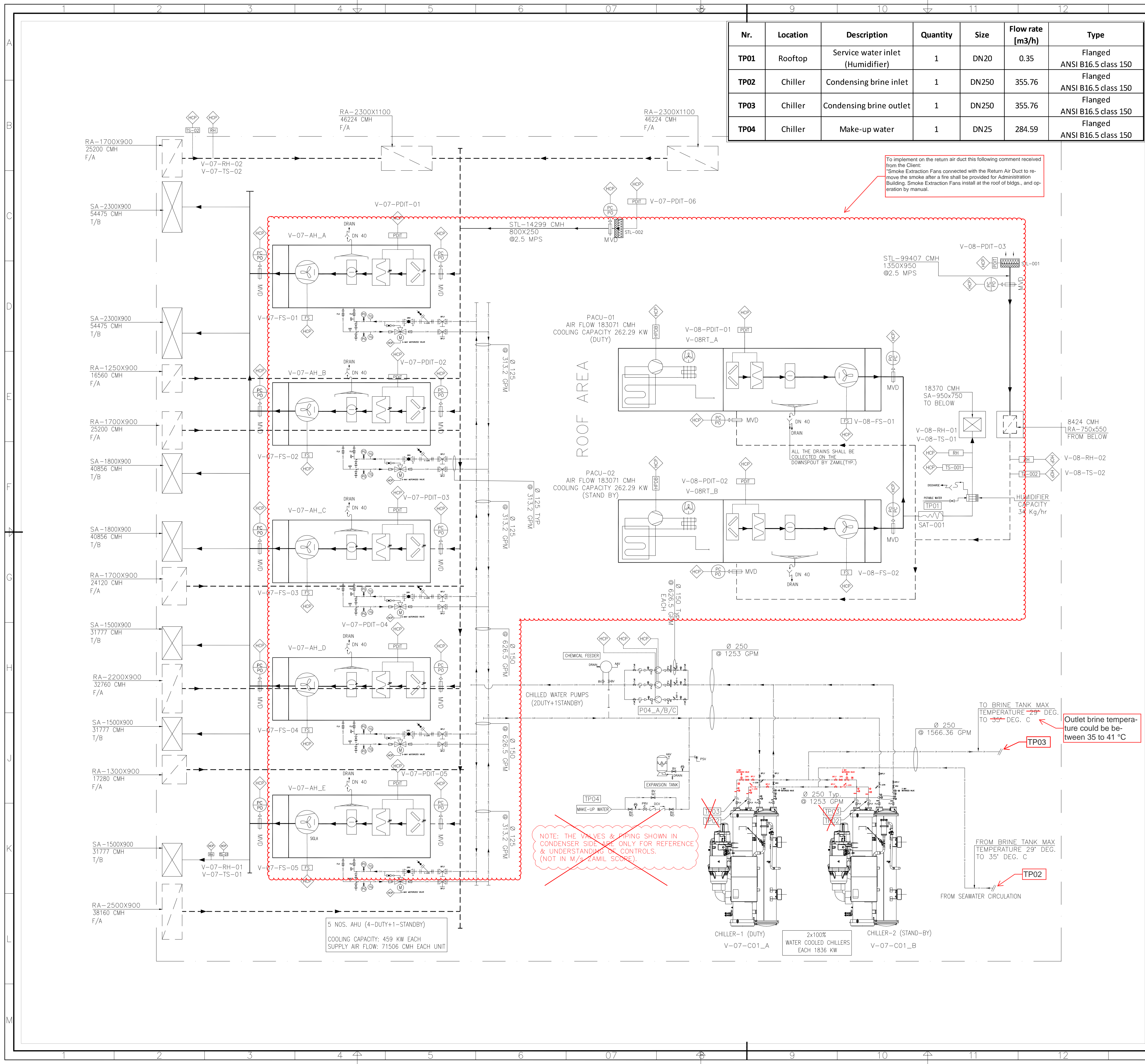
HCA07.2A1.2.6

翻 訳

E

A 3

Nr.	Location	Description	Quantity	Size	Flow rate [m3/h]	Type
TP01	Rooftop	Service water inlet (Humidifier)	1	DN20	0.35	Flanged ANSI B16.5 class 150
TP02	Chiller	Condensing brine inlet	1	DN250	355.76	Flanged ANSI B16.5 class 150
TP03	Chiller	Condensing brine outlet	1	DN250	355.76	Flanged ANSI B16.5 class 150
TP04	Chiller	Make-up water	1	DN25	284.59	Flanged ANSI B16.5 class 150



To implement on the return air duct this following comment received from the Client:
Smoke Extraction Fans connected with the Return Air Duct to remove the smoke after a fire shall be provided for Administration Building. Smoke Extraction Fans install at the roof of bldgs., and operation by manual.

Outlet brine temperature could be between 35 to 41 °C

NOTE: THE VALVES & PIPING SHOWN IN CONDENSER SIDE ARE ONLY FOR REFERENCE & UNDERSTANDING OF CONTROLS. (NOT IN M/S ZAMIL SCORE).

5 NOS. AHU (4-DUTY+1-STANDBY)
COOLING CAPACITY: 459 KW EACH
SUPPLY AIR FLOW: 71506 CMH EACH UNIT

ROOF AREA

CHILLER-1 (DUTY)
V-07-C01_A

2x100%
WATER COOLED CHILLERS
EACH 18.36 KW

CHILLER-2 (STAND-BY)
V-07-C01_B

FROM BRINE TANK MAX
TEMPERATURE 29° DEG.
TO 35° DEG. C

TO BRINE TANK MAX
TEMPERATURE 29° DEG.
TO 35° DEG. C