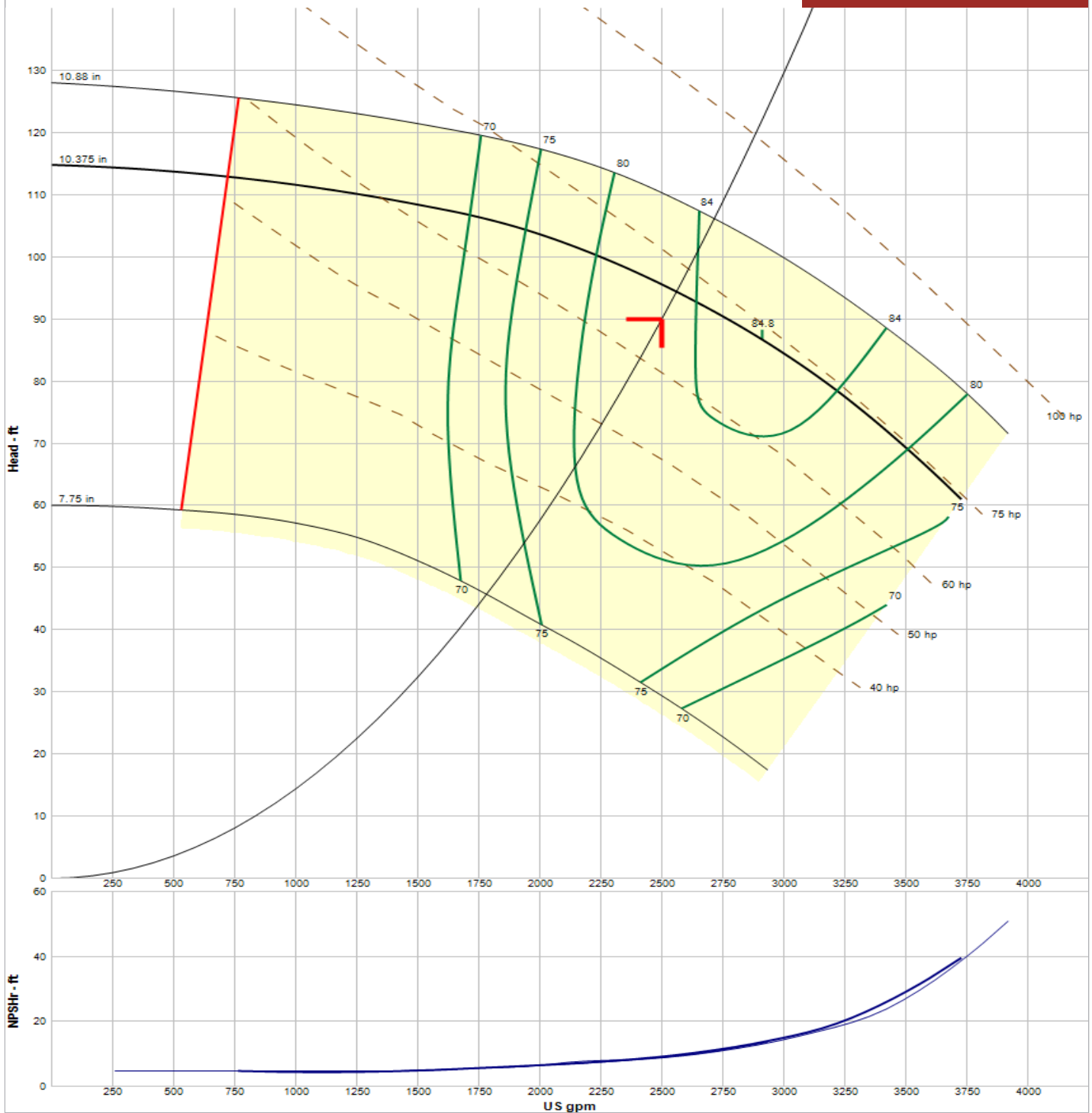


Performance Curve

VSX-VSH
8x10x10.5B



Pump Selection Summary

Pump Capacity	2500 US gpm	RPM @ Duty Point	1800
Pump Head	90 ft	Impeller Diameter	10.375 in
Control Head	0 ft	NPSHr	9.8
Duty Point Pump Efficiency	83.2 %	Motor HP	75
Pump PLEVV Efficiency	0.0 %	Motor Speed	1800 rpm
Duty point Power	70.8 bhp	Minimum Shutoff Head	115 ft
Minimum Flow at RPM	728 gpm	Fluid Type	Water
Flow @ BEP	2911 gpm	Fluid Temperature	180 °F
Weight (approx. - consult rep)	1517 lb lbs	Floor Space	16.12 ft ²